

**APPROVED**  
By Lily Xu at 4:14 pm, Dec 10, 2019

QTY.  
KEY

**GENERAL NOTES:**

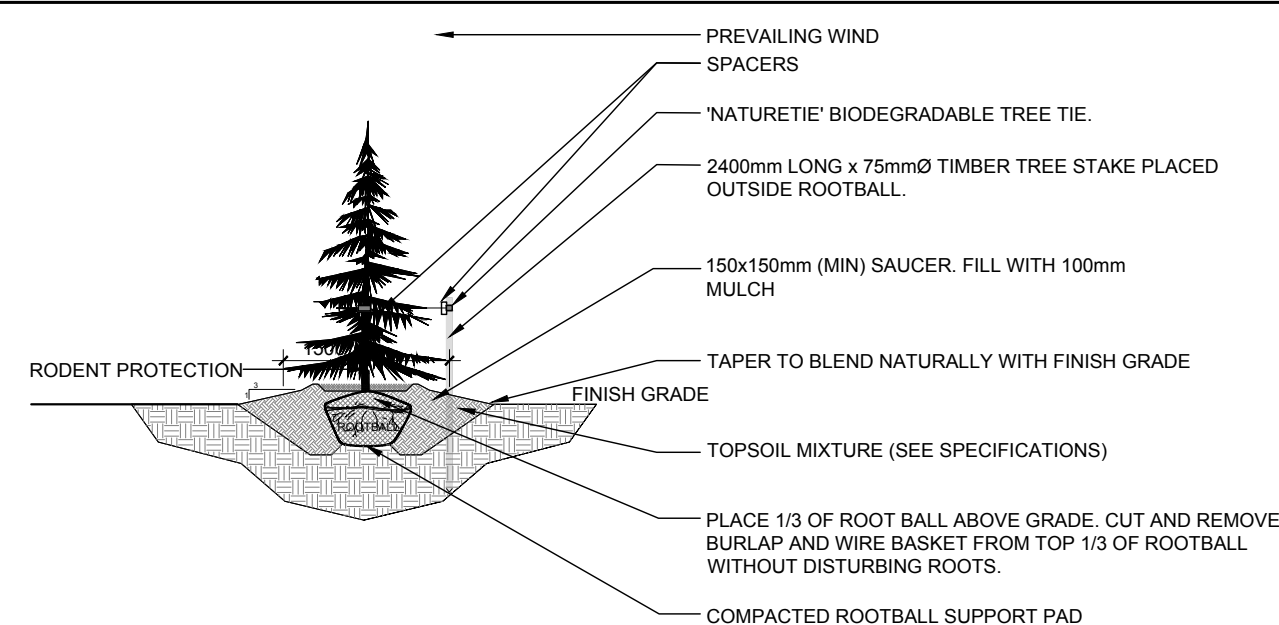
1. It is the responsibility of the appropriate contractor or official to report any errors, omissions or discrepancies on this plan with actual site conditions to the Landscape Architect before proceeding with construction.
2. The contractor is to notify all utility companies and authorities prior to any excavation and ascertain locations of underground services.
3. The contractor is to reinstate all areas and items damaged as a result of construction activity.
4. The contractor is to comply with all pertinent codes and by-laws.
5. The contractor is to maintain a positive surface run-off throughout the entire construction period.
6. The Landscape Architect is not responsible for subsurface conditions.
7. The contractor is to identify all existing trees to remain on site with the Landscape Architect prior to construction.
8. The contractor is to stake the proposed location of all plant material in conjunction with the Landscape Architect prior to excavation.
9. Minimum distances for selected deciduous trees are as follows:
  - Building Foundations 7.5m
  - Sidewalks 1.5m
  - Public Streets 2.5m
  - Underground Infrastructure 2.0m
10. All trees within 1m of underground utility trenches are to be excavated by hand.
11. Remove all protective wrapping from tree trunks after installation.
12. Staking of trees shall only be performed if necessary.
13. Ensure that mulch is piled back a min. distance of 75mm from base of tree trunk.

QTY.	KEY
------	-----

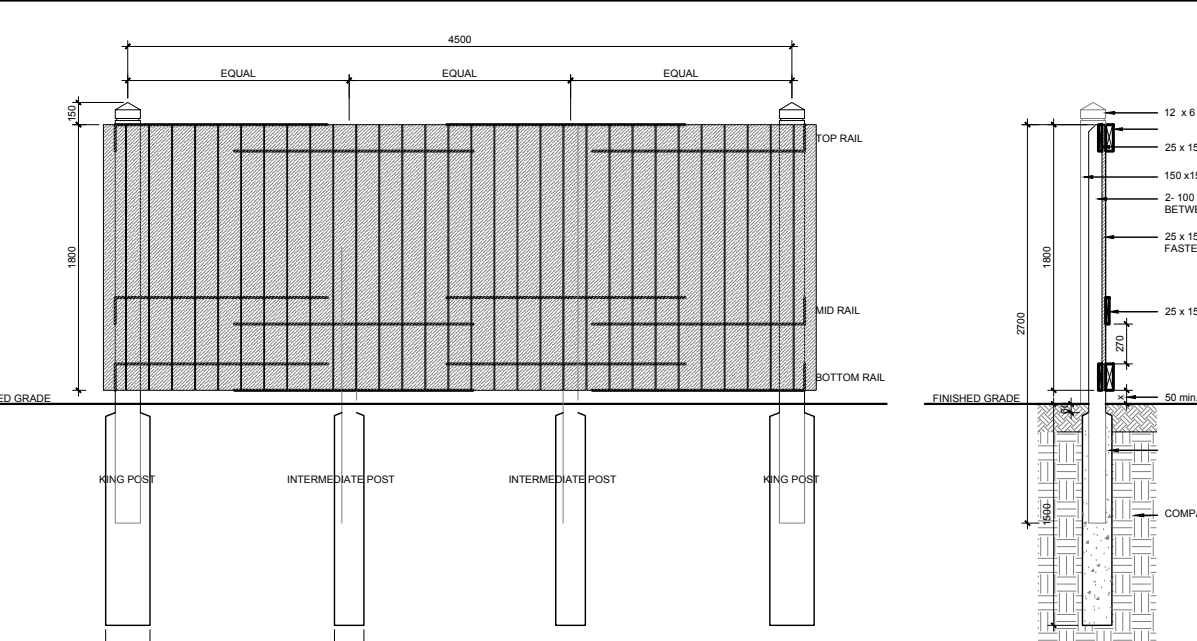
Diagram illustrating a planting bed structure with a depth of 450mm. The bed is divided into sections for different plant types and soil management. Key features include:

- REMOVE POTS COMPLETELY FROM POTTED STOCK OR CUT AND REMOVE BURLAP AND WIRE FROM TOP 150 OF ROOTBALL:** This instruction points to the removal of the pot and burlap from a potted plant being placed into the bed.
- REMOVE DAMAGED OR OBSTRUCTIONARY BRANCHES. FOLLOW PROPER HORTICULTURAL PRACTICE:** This instruction points to the removal of damaged or obstructionary branches from a shrub.
- PLANTING BED AROUND SHRUBS COVER ENTIRE BED WITH 75mm DEPTH WOODCHIP MULCH. PULL BACK MULCH FROM BASE OF SHRUBS. ENSURE THAT MULCH COVERS ALL EXPOSED SOIL:** This instruction points to the application of woodchip mulch around the base of a shrub, ensuring it covers all exposed soil.
- TAPER TO BLEND NATURALLY WITH FINISHED GRADE:** This instruction points to the tapering of the bed's edges to blend with the finished grade.
- TOPSOIL MIXTURE AS PER SPECIFICATIONS:** This instruction points to the topsoil mixture used in the bed.

L.1 SCALE: NTS



L.1 SCALE 1:150



## SECTION

L1	SCALE: NTS
----	------------

$$\frac{1}{L_1}$$

SCALE: N

L.1

SCALE 1:150

CLIENT:

CHMIEL ARCHITECTS INCORPORATED  
Suite 200, 109 Bank Street, Ottawa, ON, K1P 5N5  
Tel.: (613) 234-3695

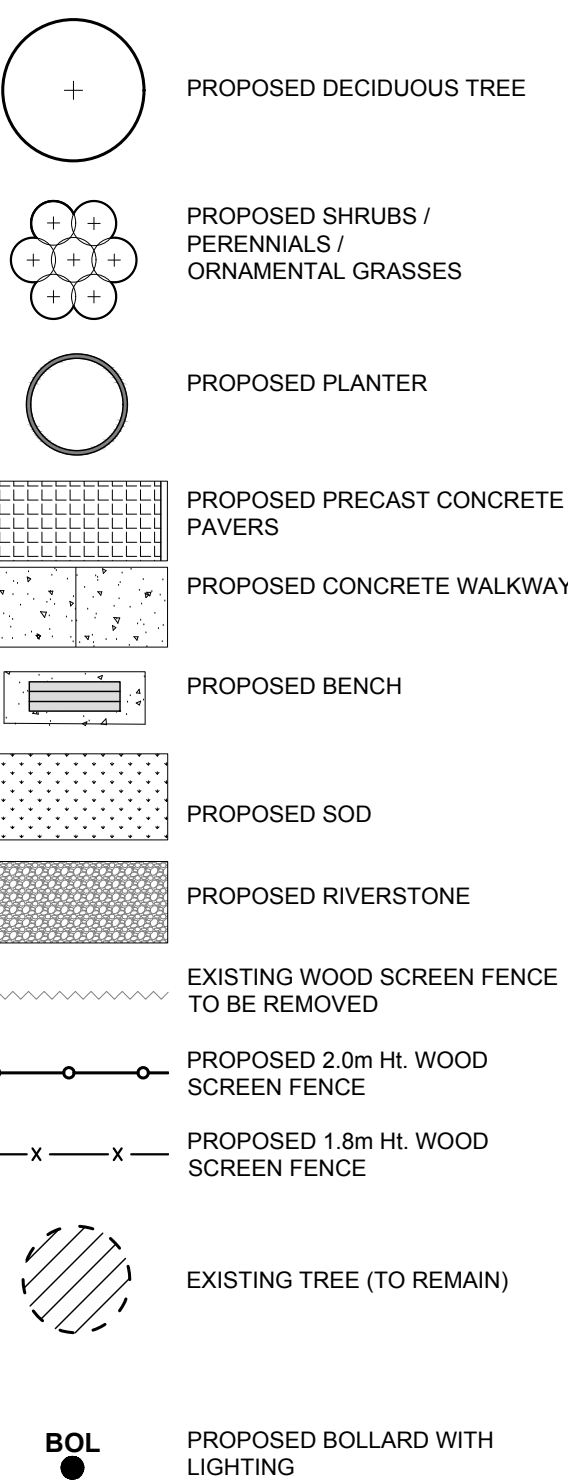
CONSULTANTS

CHMIEL ARCHITECTS INCORPORATED  
Suite 200, 109 Bank Street, Ottawa, ON, K1P 5N5  
Tel : (613) 234 3585

CIVIL  
ENGINEERS

**NOVATECH**  
ENGINEERS, PLANNERS & LANDSCAPE ARCHITECTS  
240 Michael Cowpland Drive, Suite 200, Ottawa, ON, K2M 1P1  
Tel : (613) 254-9643

LEGEND



6	REVISED PER CITY COMMENTS	10/30/2019	ML	JL
5	REVISED PER CITY COMMENTS	09/04/2019	ML	JL
4	REVISED PER UDRP COMMENTS	05/23/2019	ML	JL
3	REVISED PER CITY COMMENTS	04/29/2019	KS	JL
2	ISSUED FOR DISCUSSION AND REVIEW	10/18/2018	ML	JL
1	ISSUED FOR COORDINATION	10/12/2018	LC	JL
No.	Issue	Date History	DR	CK

**JAMES B. LENNOX & ASSOCIATES INC.**  
**LANDSCAPE ARCHITECTS**  
 3332 CARLING AVE. OTTAWA, ONTARIO K2H 5A8  
 Tel. (613) 722-5168 Fax. 1(866) 343-3942

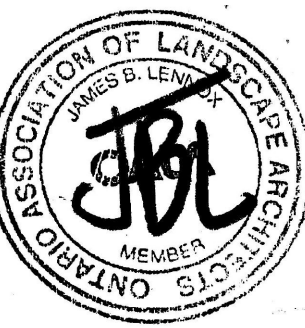
PROJECT

1545 BANK STREET APARTMENT  
1545 BANK STREET, OTTAWA ON

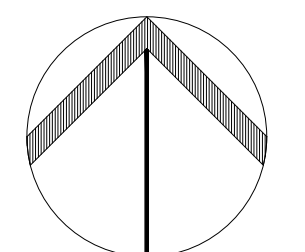
DRAWING

LANDSCAPE PLAN

STAMP



PROJECT NORTH



AS SHOWN

START DATE

SEPTEMBER, 2018

PROJECT NO.

DRAWING NO.

## L.1

PLOT SIZE ARCH-D

#16230

D07-12-18-0159