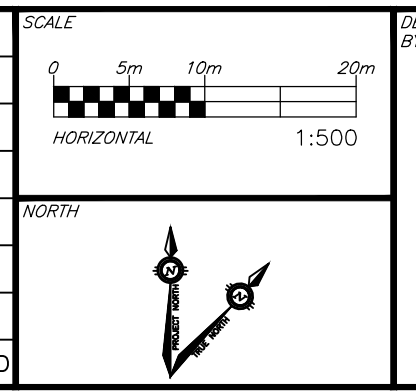


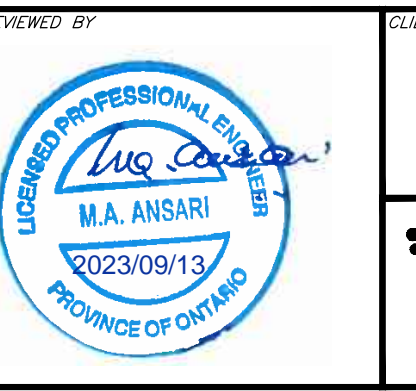
STORMWATER STORAGE AND CONTROL TABLE				
AREA NO.	CONTROL METHOD (LOCATION)	CONTROL PRODUCT	100-YR PONDING DEPTH (m) (PONDING LOCATION)	MAX. PONDING AVAILABLE (m) (PONDING LOCATION)
A1	ICD (CB11)	Hydrovex 150 VHV-2	0.15 (CB11)	0.18 (CB11)
A2	ICD (CB10)	Hydrovex 150 VHV-2	0.13 (CB10)	0.13 (CB10)
A3	ICD (CB09)	Hydrovex 150 VHV-2	0.19 (CB09)	0.20 (CB09)
A4	ICD (CB07)	Hydrovex 125 VHV-2	0.15 (CB07)	0.17 (CB07)
A5-1	ICD (DCB06)	Hydrovex 200 VHV-2	0.18 (DCB06)	0.18 (DCB06)
A5-2	ICD (CB04)	Hydrovex 125 VHV-2	0.08 (CB04)	0.14 (CB04)
A6-1	ICD (DCB05)	Hydrovex 200 VHV-2	0.17 (DCB05)	0.18 (DCB05)
A6-2	ICD (CB03)	Hydrovex 100 VHV-1	0.08 (CB03)	0.20 (CB03)
A7-1			0.16 (CBT01)	0.16 (CBT01)
A7	ICD (STMMH400)	Hydrovex 150 VHV-2	0.27 (CBMH300)	0.27 (CBMH300)
A8			0.09 (CB01)	0.09 (CB01)
A8			0.14 (CB02)	0.14 (CB02)
A8			0.08 (CBT03, CBT04)	0.08 (CBT03, CBT04)
A1-1	UNCONTROLLED	-	-	-
A9	UNCONTROLLED	-	-	-
A10-1	UNCONTROLLED	-	-	-
A10-2	UNCONTROLLED	-	-	-
A10-3	UNCONTROLLED	-	-	-
A11-1 - A11-4	ROOF DRAIN	1-WATTS ACCUTROL ROOF DRAIN WITH 2 WIERS (FOR INFILTRATION)	0.15 (R1,R2,R3,R4)	0.15 (R1,R2,R3,R4)
A11-5 - A11-12	ROOF DRAIN	1-WATTS ACCUTROL ROOF DRAIN WITH 3 WIERS (FLOW TO STM SEWER)	0.15 (R5 - R12)	0.15 (R5 - R12)
A11-13 - A11-14	ROOF DRAIN	1-WATTS ACCUTROL ROOF DRAIN WITH 2 WIERS (FLOW TO STM SEWER)	0.15 (R13, R14)	0.15 (R13, R14)

**CAUTION**  
 THE POSITION OF ALL POLE LINES, CONDUITS, WATERMAINS, SEWERS AND OTHER UNDERGROUND AND OVERGROUND UTILITIES AND STRUCTURES IS NOT NECESSARILY SHOWN ON THE CONTRACT DRAWINGS, AND WHERE SHOWN, THE ACCURACY OF THE POSITION OF SUCH UTILITIES AND STRUCTURES IS NOT GUARANTEED. BEFORE STARTING WORK, DETERMINE THE EXACT LOCATION OF ALL SUCH UTILITIES AND STRUCTURES AND ASSUME ALL LIABILITY FOR DAMAGE TO THEM.

REV	REVISION DESCRIPTION	DATE	BY	APPD
2	RE-ISSUED FOR SPC	09/12/23	AJ	AA
1	ISSUED FOR SPC	04/06/23	AJ	AA



DESIGNED BY: M.A. ANSARI  
 REVIEWED BY: M.A. ANSARI  
 LICENSED PROFESSIONAL ENGINEER  
 PROVINCE OF ONTARIO  
 2023/09/13



CLIENT	DOLYN CONSTRUCTION LTD. 1-888 LADY ELLEN PLACE OTTAWA, ON. K1Z 5L5
BASEPLAN	AJ
DESIGN	AJ
CHECKED	AA
CAD	AJ
PROJECT MANAGER	AA
APPROVED	AA

PROJECT	KONSON WAREHOUSE 1485 UPPER CANADA STREET OTTAWA, ONTARIO.
TITLE	POST-DEVELOPMENT STORM DRAINAGE PLAN
PROJECT NO.	OTT-22023462-AG
SURVEY	AGV
DATE	01/10/2023
DRAWING NO.	C400

#18973