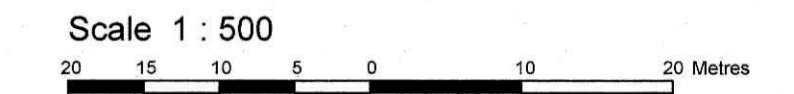


TOPOGRAPHICAL PLAN OF SURVEY OF
BLOCKS 313 AND 314
REGISTERED PLAN 4M-1619
CITY OF OTTAWA

Prepared by Annis, O'Sullivan, Vollebek Ltd.



Metric
 DISTANCES SHOWN ON THIS PLAN ARE IN METRES AND
 CAN BE CONVERTED TO FEET BY DIVIDING BY 0.3048

Surveyor's Certificate
 I CERTIFY THAT:
 1. This survey and plan are correct and in accordance with the Surveys Act and the Surveyors Act and the regulations made under them.
 2. The survey was completed on the 23rd day of March, 2021.
 Date: March 30, 2021
 Signature: [Signature]
 Ontario Land Surveyor

Notes & Legend

Denotes	
—○—	Survey Monument Planted
—■—	Survey Monument Found
SIB	Standard Iron Bar
SSIB	Short Standard Iron Bar
IB	Iron Bar
CC	Cut Cross
CP	Concrete Pin
IB#	Round Iron Bar
SBW	Spike & Washer
SSIB*	Short Standard Iron Bar (0.3 Long)
IB*	Iron Bar (0.3 Long)
(WIT)	Witness
Meas.	Measured
(AOG)	Annis, O'Sullivan, Vollebek Ltd.
(PI)	Registered Plan 4M-1619
(P2)	Plan 4R-31832
(P3)	Plan
○ FH	Fire Hydrant
○ WV	Water Valve
○ SP	Water Stand Post
○ MH-ST	Maintenance Hole (Storm Sewer)
○ MH-S	Maintenance Hole (Sanitary)
○ MH-H	Maintenance Hole (Hydro)
○ MH	Maintenance Hole (Unidentified)
—ST—	Underground Storm Sewer
—S—	Underground Sanitary Sewer
—W—	Underground Water
—G—	Underground Gas
—T—	Underground Utilities
□ CB	Catch Basin
□ CBI	Catch Basin Inlet
+ 65.00	Location of Elevations
+ 66.00	Top of Concrete Curb Elevation
○ LS	Light Standard
○ TB-b	Bell Terminal Box
○ TB-c	Cable Terminal Box
BOS	Bottom of Slope
TOS	Top of Slope
EOA	Edge of Asphalt
∅	Diameter
TP	Transformer Pad
—	Property Line

ASSOCIATION OF ONTARIO
 LAND SURVEYORS
 PLAN SUBMISSION FORM
2165362
 THIS PLAN IS NOT VALID UNLESS
 IT IS AN ENLARGED ORIGINAL
 COPY ISSUED BY THE SURVEYOR
 in accordance with
 Regulation 1105, Section 29 (3).

SITE AREA = 29008.9 m²

BOUNDARY INFORMATION RE-ESTABLISHED FROM SUBDIVISION
 COORDINATE CONTROL FILE 17879-18

ELEVATION NOTES
 1. Elevations shown are geodetic and are referred to the CGVD28 geodetic datum.
 2. It is the responsibility of the user of this information to verify that the job benchmark has not been altered or disturbed and that its relative elevation and description agrees with the information shown on this drawing.

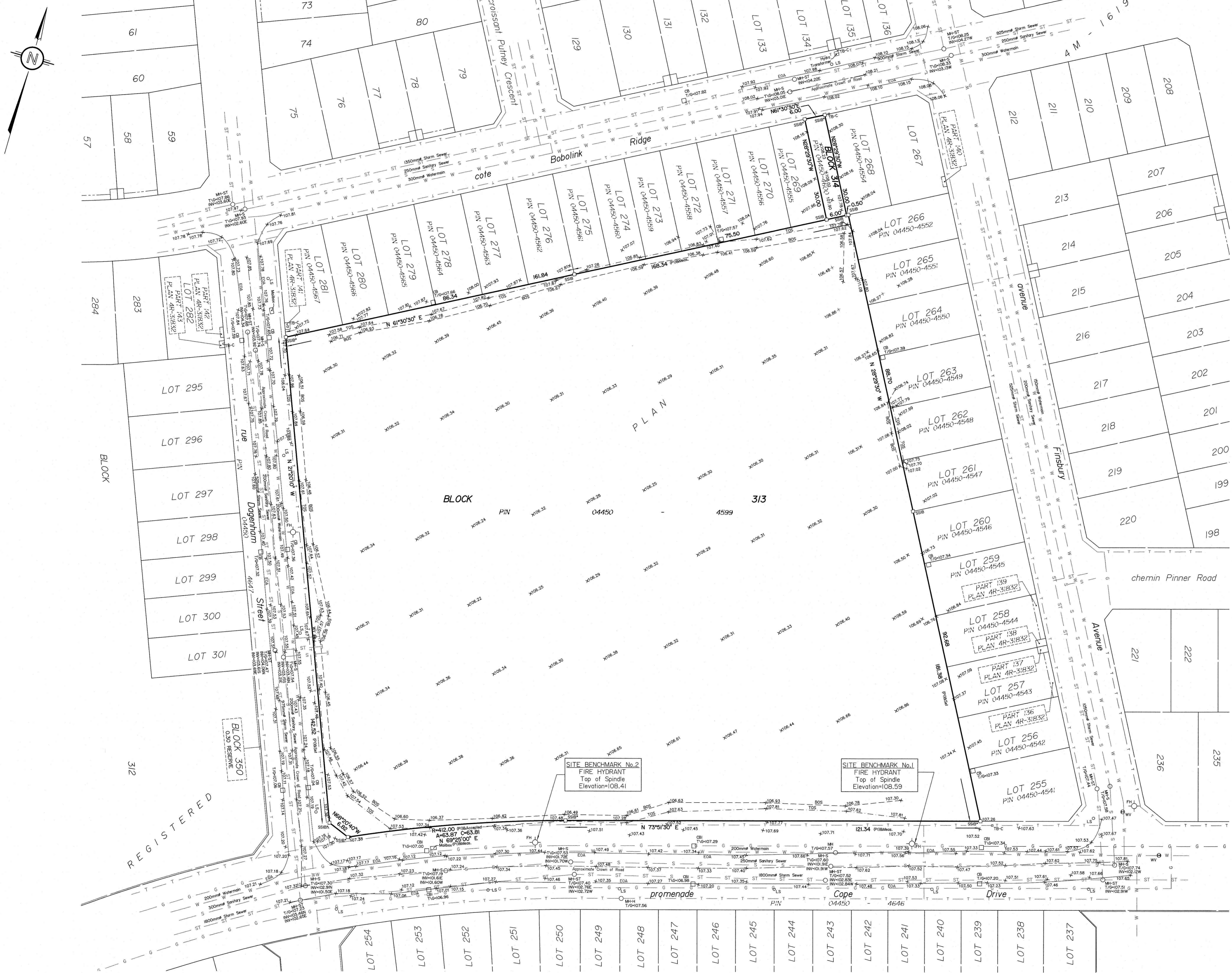
UTILITY NOTES
 1. This drawing cannot be accepted as acknowledging all of the utilities and it will be the responsibility of the user to contact the respective utility authorities for confirmation.
 2. Only visible surface utilities were located.
 3. Underground utility data derived from City of Ottawa utility sheet reference
 4. Sanitary and storm sewer locates were compiled from Drawing 27970 (services) and No.27970CUP, Prepared by IGI Group.
 5. A field location of underground plant by the pertinent utility authority is mandatory before any work involving breaking ground, probing, excavating etc.

CAUTION
 Sanitary and Storm sewer inverts are design elevations.
 As-built elevations were not available at the time of Plan production.

Bearings are grid, derived from Can-NET 2016 Real Time Network GPS observations, MTM Zone 9 (76°30' West Longitude) NAD-83 (original).

Topographic data was collected under Winter Conditions.
 Snow cover and ice preclude determining location and elevation of some topographical data that is otherwise visible.

© Annis, O'Sullivan, Vollebek Ltd. 2021. THIS PLAN IS PROTECTED BY COPYRIGHT
ANNIS, O'SULLIVAN, VOLLEBEK LTD.
 14 Concourse Gate, Suite 500
 Nepean, Ont. K2E 7S6
 Phone: (613) 727-0850 / Fax: (613) 727-1079
 Email: nepean@annvol.com
 Ontario Land Surveyors
 Job No. 21420-21 Ecole Palgrave, Bks313-314 4M-1619 PDS F 06



Y:\2021\1619-21_Corridor des Ecoles Palgrave, Plan de Survey, TYPICAL\1619-21 Ecole Palgrave Bks313-314 4M-1619 PDS F.dwg