

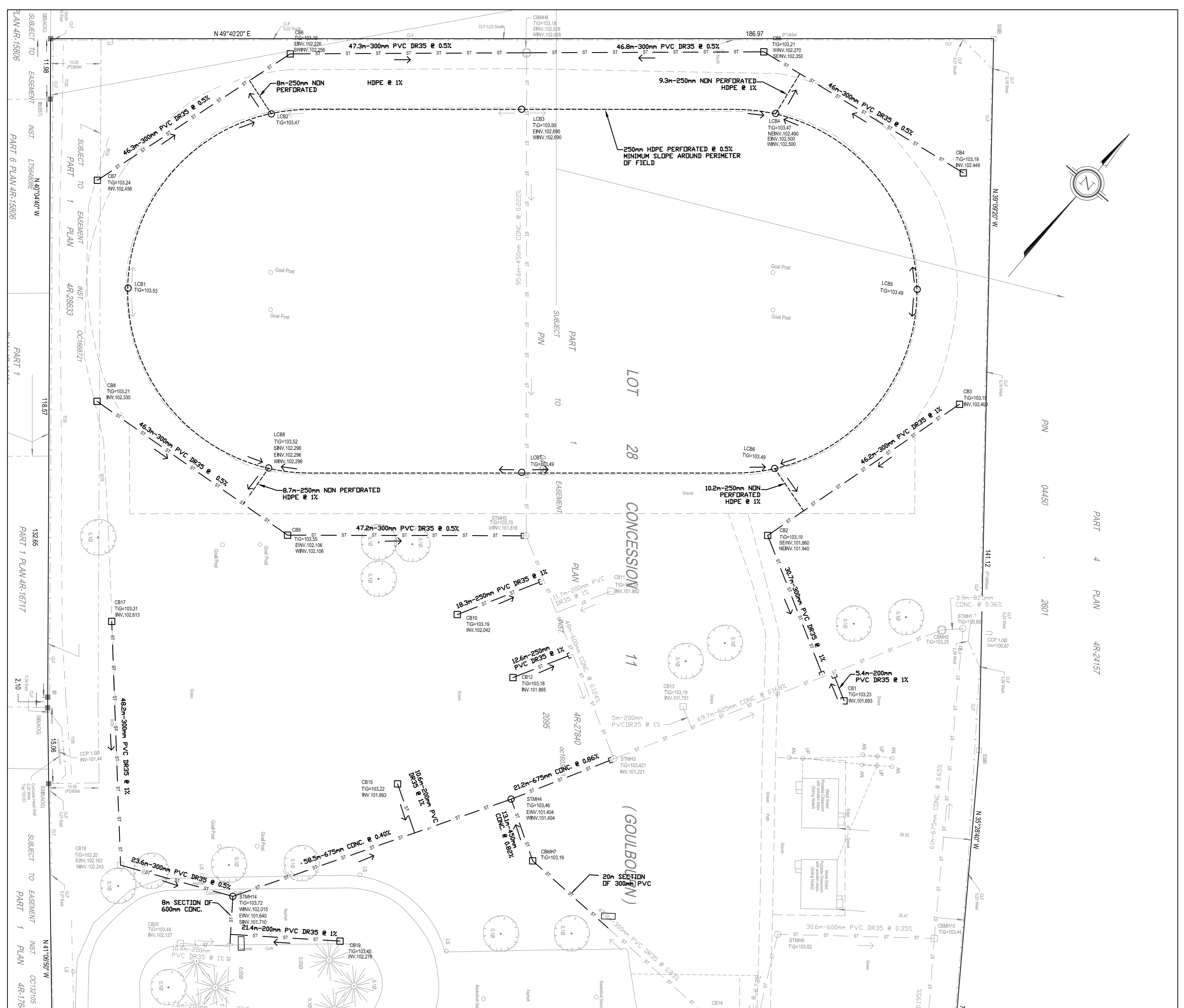


SITE LOCATION PLAN - N.T.S.

1	2018-03-08	REV. ISSUED FOR SITE PLAN CONTROL
2	2018-02-05	ISSUED FOR SITE PLAN CONTROL
3	2018-01-30	ISSUED FOR REVIEW
4	2018-01-23	SITE PLAN REVIEW

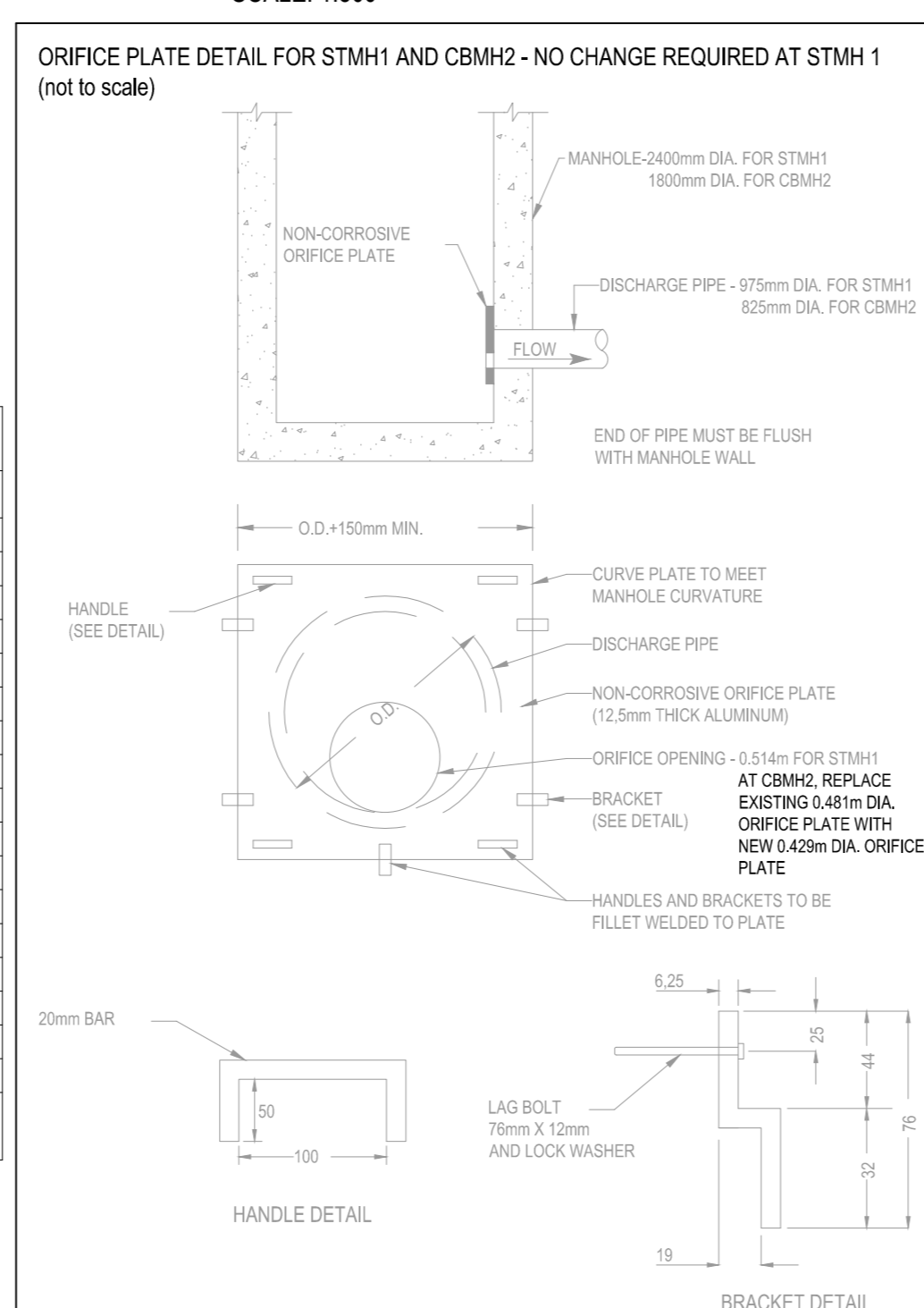
LEGEND

- EXISTING GRADE ELEVATION
- EXISTING STORM MANHOLE
- EXISTING CATCH BASIN
- EXISTING SANITARY MANHOLE
- EXISTING VALVE AND BOX
- EXISTING FIRE HYDRANT
- EXISTING STORM SEWER
- EXISTING SANITARY SEWER
- EXISTING WATERMAIN
- EXISTING STORM TO BE REMOVED
- EXISTING SUBSTATION TO BE REMOVED
- EXISTING STORM MANHOLE TO BE REMOVED
- EXISTING CATCH BASIN TO BE REMOVED
- EXISTING LANDSCAPE CATCH BASIN TO BE REMOVED
- PROPOSED TOP AND BOTTOM OF CURB
- PROPOSED GRADE SLOPE
- PROPOSED LANDSCAPE CATCH BASIN
- PROPOSED STORM MANHOLE
- PROPOSED STORM CATCH BASIN
- PROPOSED STORM CATCH BASIN MANHOLE
- PROPOSED SANITARY MANHOLE
- PROPOSED STORM SEWER
- PROPOSED SANITARY SEWER
- PROPOSED WATERMAIN
- PROPOSED VALVE AND BOX
- PROPOSED REDUCER
- PROPOSED FIRE HYDRANT
- NEW WATER METER FOR DOME
- NEW REMOTE READOUT FOR WATER METER
- DRAINAGE SUB-AREA BOUNDARY
- - - - - PONDING LIMIT
- PROPOSED CLAY DYKE



1 SERVICING REMOVAL PLAN
 C003 SCALE= 1:500

REMOVE STORM PIPING, CATCH BASIN LEADS, SUBDRAINS, LANDSCAPE CATCH BASINS, CATCH BASINS, AND MANHOLES SHOWN IN BOLD ON PLAN.
 CAP PIPE STUBS AT CATCH BASINS AND MANHOLES THAT WILL REMAIN EXCEPT WHERE PIPES WILL BE REPLACED.
 REINSTATE TRENCH AREAS AND DISTURBED SURFACES TO EQUAL OR BETTER THAN EXISTING CONDITIONS OR TO SUBGRADE LEVEL REQUIRED FOR NEW WORK.



ORIFICE PLATE DETAIL FOR STMH1 AND CBM2 - NO CHANGE REQUIRED AT STMH 1 (not to scale)

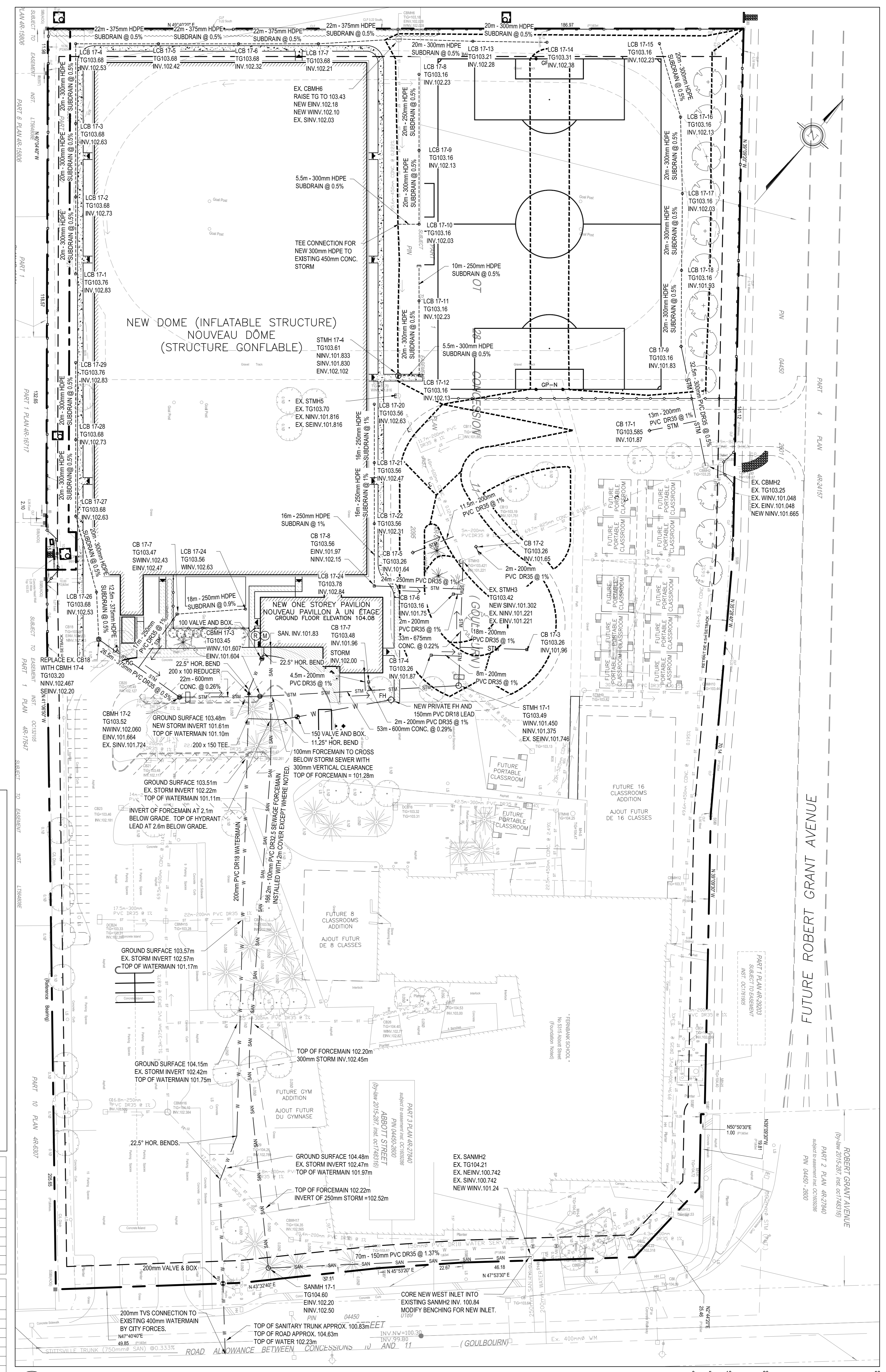
STORM SEWER INVERTS AND INSULATION					
STATUS	FROM	TO	UPSTREAM INVERT (m)	DOWNSTREAM INVERT (m)	INSULATION THICKNESS (mm)
	CBMH 18	CBMH 13	102.293	102.200	50
	CBMH 13	CBMH 12	102.140	101.576	50
	CBMH 12	CBMH 10	101.576	101.302	50
	DCB 16	STMH 8	101.996	101.839	100
	BLD 0	STMH 8	102.400	101.533	100
	STMH 8	STMH 9	101.649	101.459	50
	STMH 9	CBMH 10	101.409	101.302	50
	CBMH 10	STMH 1	101.302	100.958	50
	CBMH 17	CBMH 16	102.965	102.384	50
	CBMH 16	CBMH 15	102.254	101.939	100
REVISED	CBMH 15	STMH 17-2	101.809	101.724	100
REVISED	CB 14	CBMH 17-1	101.961	101.746	100
	CBMH 6	STMH 5	102.028	101.816	50
	STMH 5	STMH 3	101.816	101.221	50
	STMH 3	CBMH 2	101.221	101.048	100
	CBMH 2	STMH 1	101.048	100.958	100
	STMH 1	OUTLET	100.888		
NEW	CBMH 17-4	CBMH 17-2	102.20	102.060	100
NEW	CB 17-7	MAN	102.43	102.26	100
NEW	CBMH 17-2	CBMH 17-3	101.664	101.607	100
NEW	CBMH 17-3	STMH 17-1	101.604	101.450	100
NEW	STMH 17-1	STMH 13	101.375	101.302	50
NEW	CB 17-8	MAN	101.97	101.73	100
NEW	CB 17-9	CBMH 2	101.83	101.665	100
NEW	CB 17-1	MAN	101.87	101.74	100

MANHOLE AND CATCHBASIN SIZES		
DIAMETER (mm)	OPSD REFERENCE	
2400	701.013	STMH 1
1800	701.012	CBMH 2
1800	701.012	CBMH 13
1200	701.010	STMH 5
1200	701.010	CBMH 6
1200	701.010	STMH 8
1200	701.010	STMH 9
1800	701.011	STMH 10
1800	701.012	CBMH 10
1200	701.010	CBMH 12
1200	701.010	CBMH 15
1200	701.010	CBMH 16
1200	701.010	CBMH 17
1200	701.010	CBMH 18
1800	701.012	STMH 17-1
1800	701.011	STMH 17-2
1200	701.010	CBMH 17-3

TOP 10mm COB 24 ARE 600x600mm AS PER OPSD 705.020 ALL SINGLE CATCHBASINS ARE 600 x 600mm AS PER OPSD 705.010

WATER PROFILE TABLE - EXISTING SCHOOL WATER SERVICE			
STATION (m)	DESCRIPTION - 200mm MAIN/ 150mm SERVICE	TOP OF WATERMAIN	GROUND SURFACE
0.0	CONNECTION TO STUB	101.85	104.22
1.5	200x200mm TEE	101.84	104.29
2.5	200 x 150mm REDUCER	101.84	104.29
2.5	CROSS ABOVE SANITARY SERVICE (SANITARY INVERT 100.94m)	101.84	104.29
5.0	150mm VALVE AND BOX	101.81	104.32
52.1	45° HORIZONTAL BEND	101.58	104.47
55.4	45° HORIZONTAL BEND	102.20	104.61
55.4	CROSS BELOW EXISTING STORM (STORM INVERT 102.78)	102.20	104.61
58.4	BUILDING ENTRY	102.35	104.89

WATER PROFILE TABLE - NEW WATER SERVICE FOR DOME			
STATION (m)	DESCRIPTION - 200mm MAIN/ 100mm SERVICE	TOP OF WATERMAIN	GROUND SURFACE
0.0	CONNECTION TO 400mm CITY MAIN	102.37	104.57
3.1	CROSS ABOVE SANITARY (TOP OF SANITARY 100.83)	102.23	104.63
18.7	200mm VALVE AND BOX AT PROPERTY LINE	102.35	104.76
46.1	22.5° HORIZONTAL BEND	102.10	104.50
49.0	CROSS BELOW EXISTING STORM (STORM INV. 102.47)	101.97	104.48
58.9	22.5° HORIZONTAL BEND	102.08	104.48
89.6	CROSS BELOW EXISTING STORM (STORM INV. 102.42)	101.75	104.15
117.2	CROSS BELOW EXISTING STORM (STORM INV. 102.57)	101.17	103.57
160.4	CROSS BELOW EXISTING STORM (STORM INV. 102.22)	101.11	103.51
171.9	200 x 150 HYDRANT TEE	101.11	103.56
177.1	CROSS BELOW NEW STORM (STORM INV. 101.61)	101.10	103.48
178.6	200 x 100 REDUCER	101.07	103.47
180.1	22.5° HORIZONTAL BEND	101.10	103.51
185.9	150 x 100 REDUCER	101.26	103.66
187.6	150mm VALVE AND BOX	101.32	103.72
189.3	22.5° HORIZONTAL BEND	101.35	103.87
191.1	PAVILION ENTRY	101.39	103.91



2 SERVICING PLAN
 C003 SCALE= 1:500

SCALE: 1:500

PROJECT TITLE/TITRE DU PROJET:
ÉCOLE SECONDAIRE CATHOLIQUE PAUL-DESMAIRIS - DOME
 5315 ABBOTT STREET
 OTTAWA, ON

CONSEIL DES ÉCOLES CATHOLIQUES DE DU CENTRE-EST
 4000, RUE LABELLE, OTTAWA, ON K1J 1A1

DRAWING TITLE/TITRE DU DESSIN
SERVICING PLAN

SCALE	AS NOTED	PROJ. NO.	17M-0304-00	ISSUE NO.	4	REV. NO.	3
DATE	October 13, 2017	ACAD. FILE/CHÉRIER	17M0304-00-023				

C003