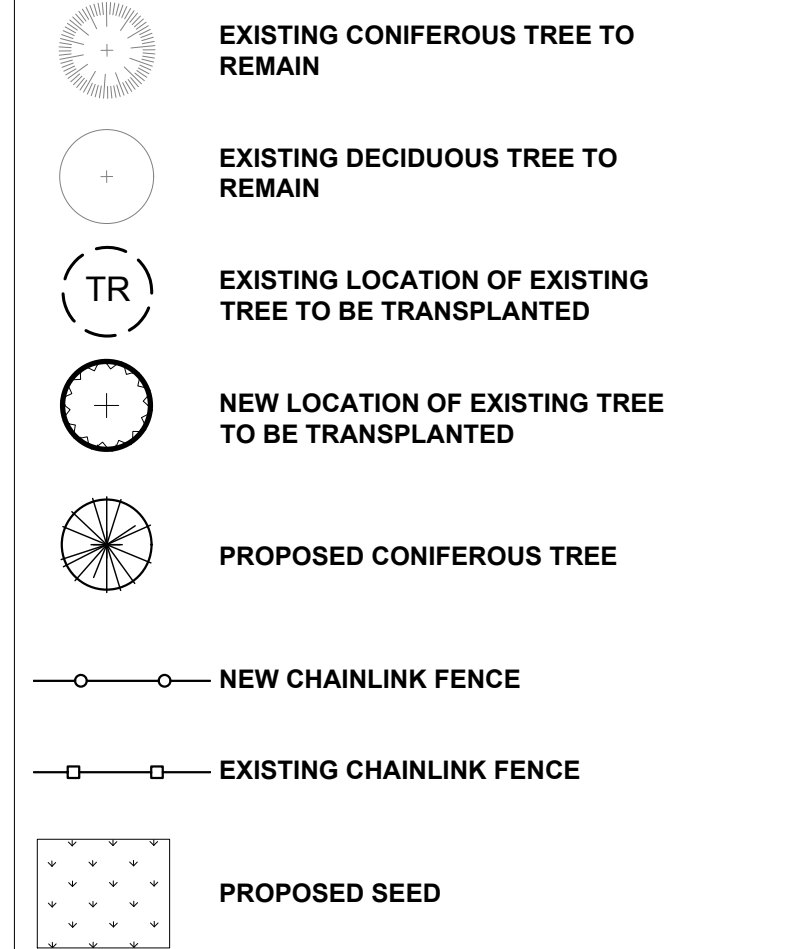


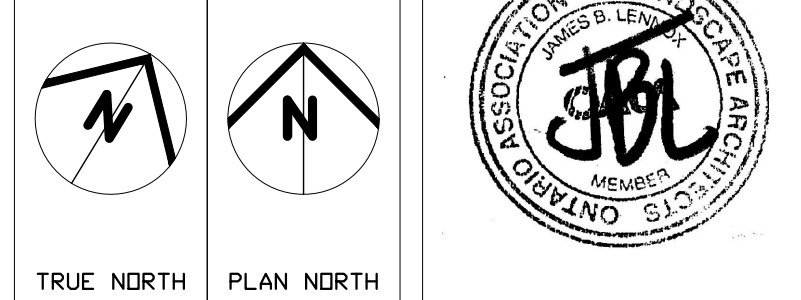
## LEGEND



REV.	DATE	ISSUE
1	2018/03/08	ISSUED FOR SITE PLAN CONTROL

## GENERAL NOTES:

- It is the responsibility of the appropriate contractor or official to report any errors, omissions or discrepancies on this plan with actual site conditions to the Landscape Architect before proceeding with construction.
- The contractor is to notify all utility companies and authorities prior to any excavation and ascertain locations of underground services.
- The contractor is to reinstate all areas and items damaged as a result of construction activity.
- The contractor is to comply with all pertinent codes and by-laws.
- The contractor is to maintain a positive surface run-off throughout the entire construction period.
- The Landscape Architect is not responsible for subsurface conditions.
- The contractor is to stake the proposed location of all plant material in conjunction with the Landscape Architect prior to construction.
- Minimum distances for selected deciduous trees are as follows:
  - Building Foundations 7.5m
  - Sidewalks 1.5m
  - Public Streets 2.5m
  - Underground Infrastructure 2.0m
- All trees within 1m of underground utility trenches are to be excavated by hand.
- Remove all protective wrapping from tree trunks after installation.
- Staking of trees shall only be performed if necessary.
- Ensure that mulch is pulled back a min. distance of 75mm from base of tree trunk.



EDWARD J. CUHACI  
& ASSOCIATES ARCHITECTS INC.  
1171 Shuter St. Suite 100, Ottawa, Ontario, K1P 6H7  
Fax: (613) 236-1844 Telephone: (613) 236-7135 E-mail: info@cuhaci.com

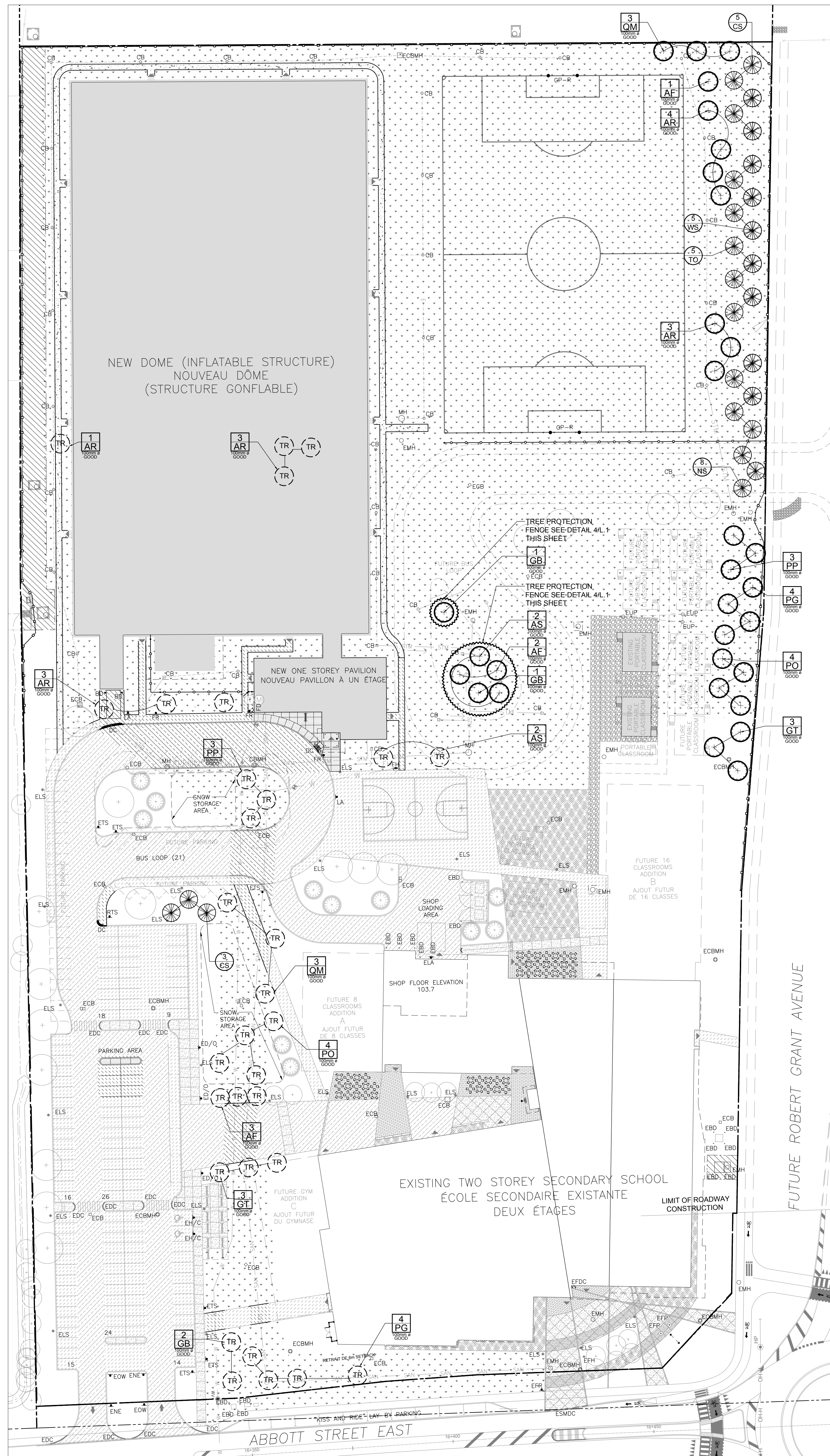
PROJET/TITRE/TITLE DU PROJET:  
ÉCOLE SECONDAIRE CATHOLIQUE  
PAUL-DESMARIS - DOME  
5315 ABBOTT STREET E.  
OTTAWA, ON.

CONSEIL DES ÉCOLES CATHOLIQUES  
DU CENTRE-EST  
4000, RUE LABELLE, OTTAWA, ON K1J 1A1

DRAWING/TITRE/TITLE DU DESSIN:  
TREE CONSERVATION  
REPORT &  
LANDSCAPE PLAN

SCALE	ÉCHELLE	PROJ. No.	ISSUE No.	REV. No.
1:500	1:500	ML	1	0
DRAWN BY	DESIGNÉ PAR	ML	DRAWING/DESSIN	
CHECKED BY	VÉRIFIÉ PAR	JL		
DATE	2018/03/08	ACAD FILE/FICHER		

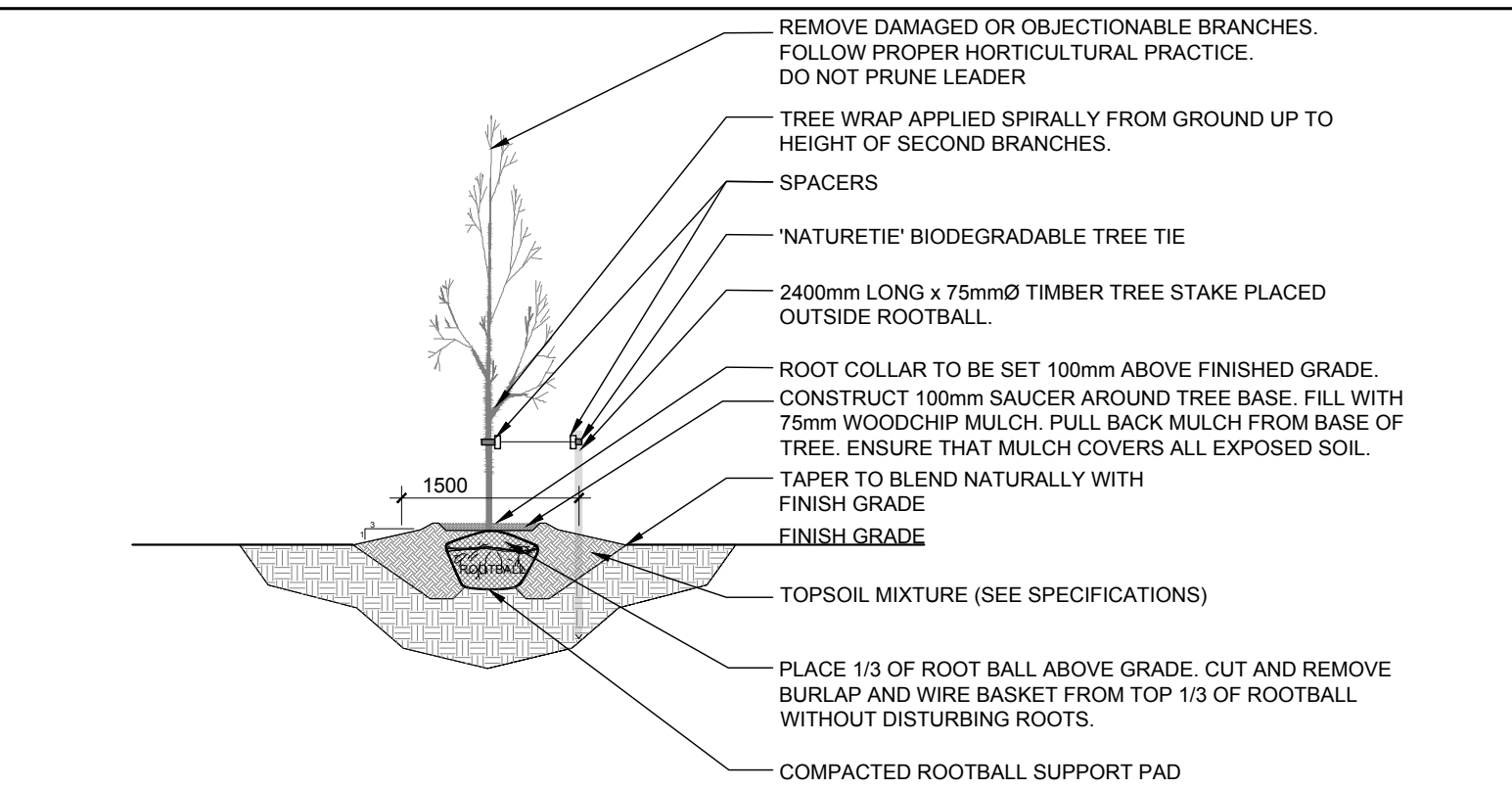
L.1



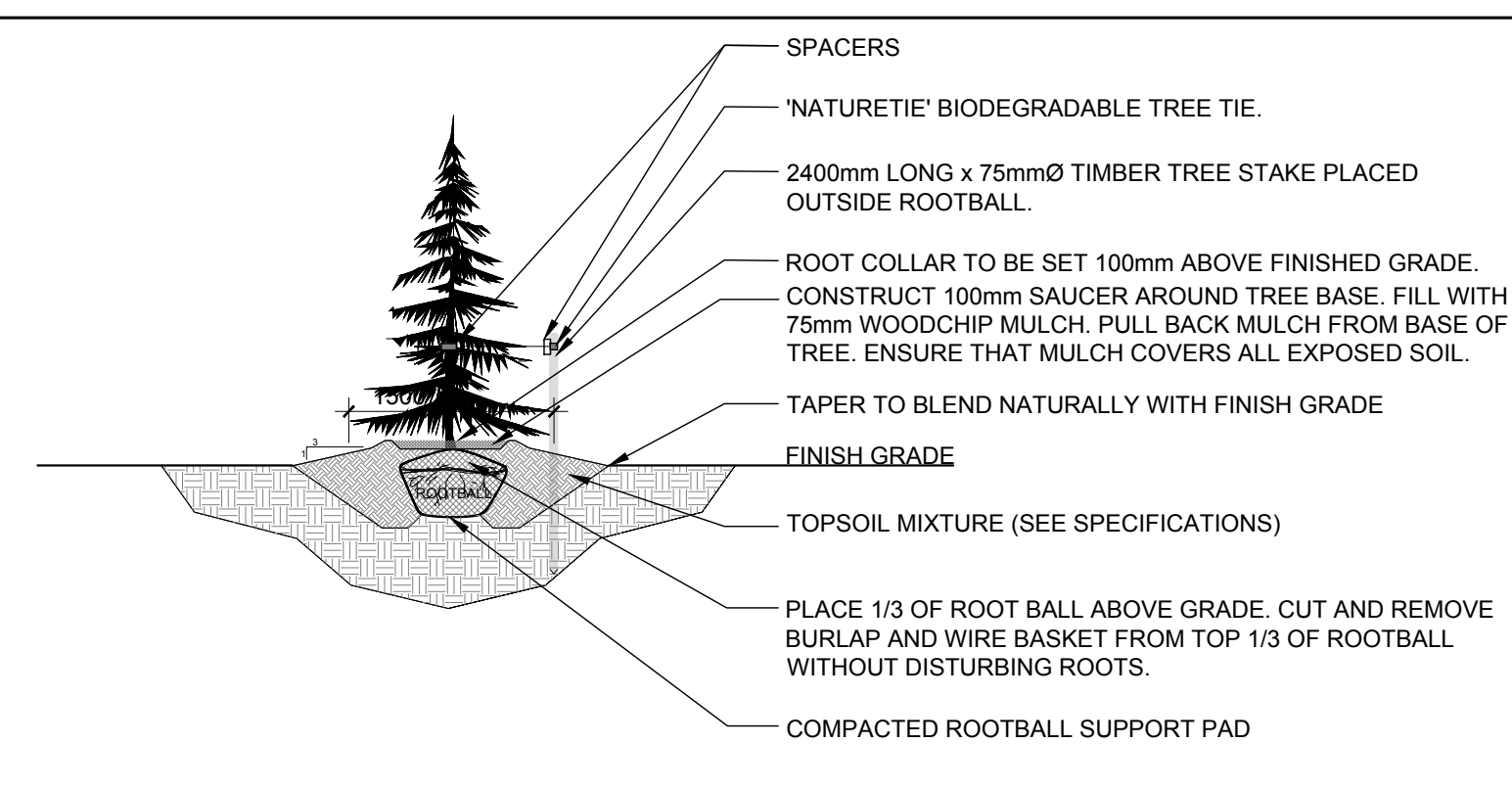
1 L.1 TREE CONSERVATION REPORT & LANDSCAPE PLAN  
SCALE: 1:500

KEY	QTY	BOTANICAL NAME	COMMON NAME	SIZE	CONDITION	REMARKS
TREES						
AF	3	Acer x freemanii	Freeman's Maple	100mm ø	GOOD	See Plan
AR	7	Acer rubrum	Red Maple	100mm ø	GOOD	See Plan
AS	2	Acer saccharum	Sugar Maple	100mm ø	GOOD	See Plan
GB	2	Ginkgo biloba	Maidenhair Tree	100mm ø	GOOD	See Plan
GT	3	Gleditsia triacanthos	Honey Locust	100mm ø	GOOD	See Plan
PG	4	Picea glauca	White Spruce	100mm ø	GOOD	See Plan
PO	4	Picea omorika	Serbian Spruce	100mm ø	GOOD	See Plan
PP	3	Picea pungens	Red Spruce	100mm ø	GOOD	See Plan
QM	3	Quercus macrocarpa	Bur Oak	100mm ø	GOOD	See Plan

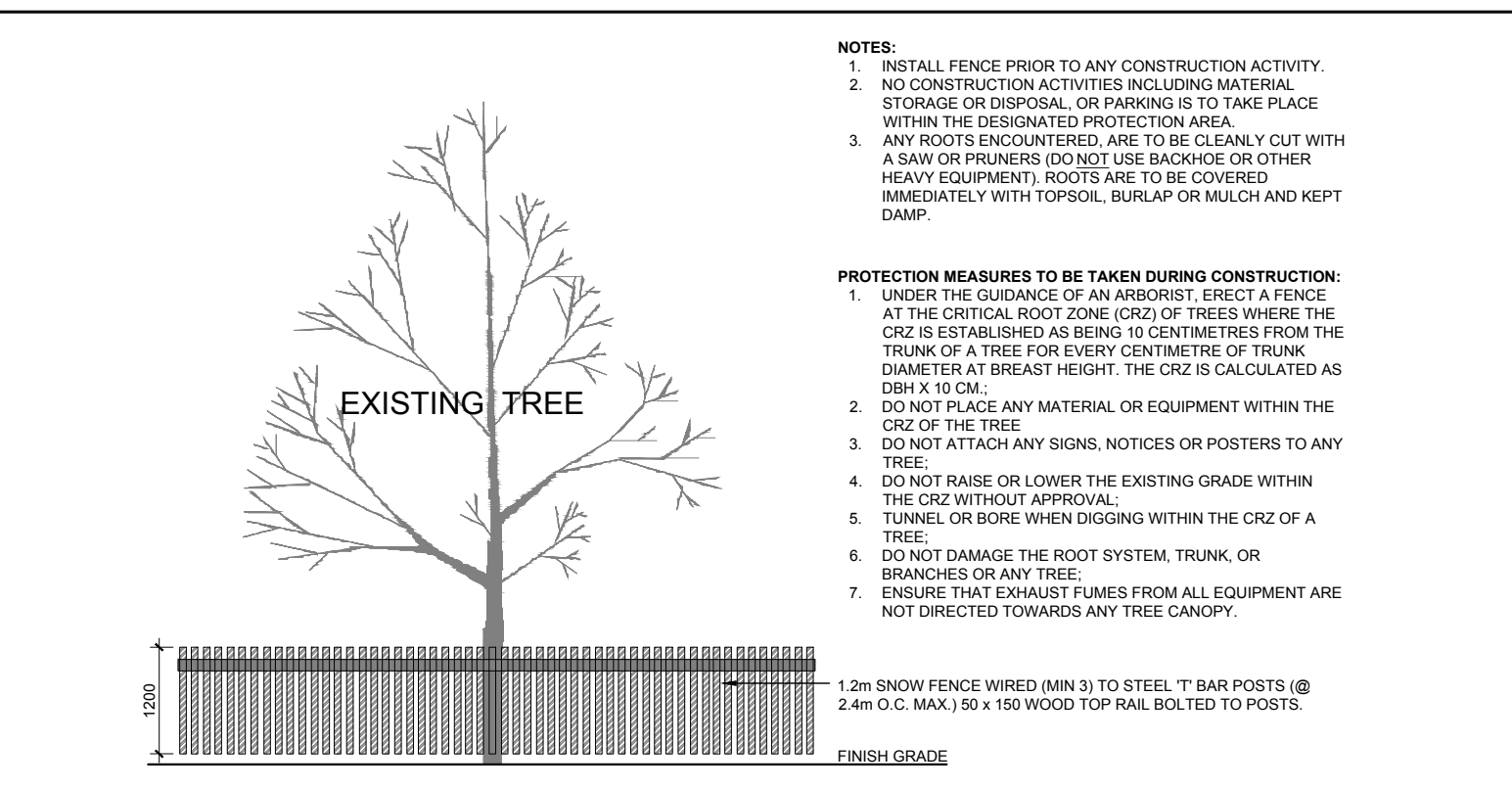
KEY	QTY	BOTANICAL NAME	COMMON NAME	SIZE	CONDITION	REMARKS
TREES						
GB	8	Picea pungens	Colorado Spruce	1.2m Ht.	Potted	See Plan
NS	6	Picea abies	Norway Spruce	1.2m Ht.	Potted	See Plan
TO	5	Thuja occidentalis	Eastern White Cedar	1.2m Ht.	Potted	See Plan
WS	5	Picea glauca	White Spruce	1.2m Ht.	Potted	See Plan



2 L.1 DECIDUOUS TREE PLANTING  
SCALE: NTS



3 L.1 CONIFEROUS TREE PLANTING  
SCALE: NTS



4 L.1 TREE PROTECTION FENCE  
SCALE: NTS

NOTE: TREES ARE TO BE PROTECTED WITH A  
TREE PROTECTION FENCE DURING THE  
CONSTRUCTION PERIOD.