

LEGEND

- ▽ BARRIER FREE PARKING
- ▽ BUILDING ENTRANCE/EXIT
- EBD EXISTING BOLLARD TO REMAIN
- BD NEW BOLLARD, REFER TO DETAIL 5/A005
- CURB
- EDC EXISTING DEPRESSED CURB TO REMAIN
- DC NEW DEPRESSED CURB
- ESMDC SEMI-MOUNTABLE DEPRESSED CURB
- EXISTING CHAIN LINK FENCE TO REMAIN
- NEW VINYL COATED CHAIN LINK FENCE
- ROAD CENTER LINE
- FIRE ROUTE
- SET BACK LINE
- PROPERTY LOT LINE
- EASEMENT BOUNDARY
- ▽ FR FIRE ROUTE SIGN (EVERY 25 METRES)
- ▽ EFR EXISTING FIRE ROUTE SIGN TO REMAIN
- ▽ EHV/C EXISTING HANDICAPPED PARKING SIGN TO REMAIN
- ▽ ED/O EXISTING DROP-OFF SIGN TO REMAIN
- ▽ EOW EXISTING ONE WAY SIGN TO REMAIN
- ▽ ENE EXISTING NO ENTRY SIGN TO REMAIN
- ▽ ELA EXISTING LOADING AREA SIGN TO REMAIN
- ▽ LA NEW LOADING AREA SIGN
- ▽ ETS EXISTING MISC. TRAFFIC SIGN TO REMAIN
- ▽ RTS RELOCATE EXISTING MISC. TRAFFIC SIGN
- GP-R RELOCATED EXISTING GOAL POSTS
- ELS EXISTING LIGHT STANDARD TO REMAIN
- SIB IRON BAR (REFER TO SURVEY)
- ▽ EFD/C EXISTING FIRE DEPARTMENT CONNECTION TO REMAIN (REFER TO MECHANICAL)
- ▽ FDC NEW FIRE DEPARTMENT CONNECTION (REFER TO MECHANICAL)
- EFH EXISTING FIRE HYDRANT (REFER TO CIVIL)
- FH NEW FIRE HYDRANT (REFER TO CIVIL)
- EMH EXISTING MAN HOLE TO REMAIN
- MH NEW MAN HOLE (REFER TO CIVIL)
- ECB EXISTING CATCH BASIN TO REMAIN
- CB NEW CATCH BASIN (REFER TO CIVIL)
- EFP EXISTING FLAG POLE TO REMAIN
- EXISTING TO REMAIN
- ▨ TYPE 1 ASPHALT - HEAVY DUTY (REFER TO SPEC.)
- ▨ TYPE 2 ASPHALT - LIGHT DUTY (REFER TO SPEC.)
- ▨ CONCRETE WALK
- ▨ CRUSHED STONE PATHWAY
- ▨ NEW GRASS (REFER TO LANDSCAPE)

SITE PLAN NOTES

- 1 CANOPY OR 2nd FLOOR ABOVE.
- 2 EXISTING EASEMENT.
- 3 FUTURE CRUSHED STONE PATHWAY.
- 4 NEW 1500mm WIDE GATE IN CHAIN LINK FENCE. REFER TO DETAIL 2/A005.
- 5 CHAIN LINK FENCE CANTILEVERED END SECTION. REFER TO DETAIL 3/A005.
- 6 CURB RAMP WITH FLARED SIDES AND DETECTABLE HAZARD INDICATOR, CONSTRUCTED TO CITY OF OTTAWA DETAIL S27 PEDESTRIAN CURB RAMP WITH BOLLARD. SEE DETAIL 18/A005 AND SPECIFICATIONS.
- 7 ALIGN WITH BUILDING FOUNDATION.
- 8 AUTOMATIC DOOR OPERATOR BOLLARD. REFER TO DETAIL 6/A005.
- 9 EXISTING BERM IN EASEMENT.
- 10 EXTENT OF 100mm PAWING INSULATION. SEE DETAIL 8/A220.
- 11 NEW TRAFFIC SIGN ON EXISTING POST. WORDING TO BE CONFIRMED BY CLIENT.



CONSEIL DES ÉCOLES CATHOLIQUES DU CENTRE-EST
Le meilleur conseil qu'on puisse vous donner

NO.	DATE	DESCRIPTION	ISSUE
2	18/11/2018	REISSUED FOR SITE PLAN CONTROL	
2	01/11/2018	ISSUED FOR SITE PLAN CONTROL	
1	01/11/2018	ISSUED FOR INFORMATION	

LES IDÉES, CONCEPTS, DISPOSITIONS ET PLANS MONTRÉS OU REPRÉSENTÉS PAR CE DESSIN APPARTIENNENT À EDWARD J. CUHACI AND ASSOCIATES ARCHITECTS INC. ET ONT ÉTÉ CRÉÉS, ET DÉVELOPPÉS POUR ÊTRE UTILISÉS DANS LE CADRE DU PRÉSENT PROJET. ILS NE DOIVENT PAS ÊTRE UTILISÉS À D'AUTRES FINS NI COMMUNIQUÉS À QUI QUE CE SOIT SANS LA PERMISSION ÉCRITE DE EDWARD J. CUHACI AND ASSOCIATES ARCHITECTS INC.

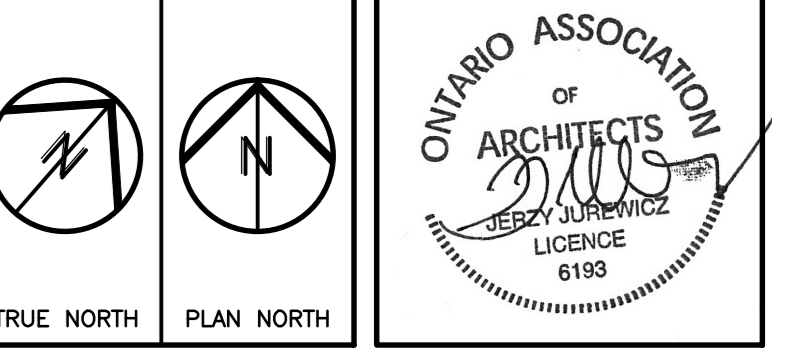
L'ARCHITECTE DÉCLINE TOUTE RESPONSABILITÉ DÉCOULANT DE PROBLÈMES FAISANT SUITE AU NON RESPECT DES PLANS ET DEVIS OU DE L'INTENTION DU CONCEPT QU'ILS TRANSMETTENT, OU DE TOUTS PROBLÈMES POUVANT RÉSULTER DU DÉFAUT DE TIERS D'OBTENIR OU DE SUIVRE LES INSTRUCTIONS DE L'ARCHITECTE RELATIVEMENT AUX ERREURS, OMISSIONS, INCOHÉRENCES, AMBIGUITÉS OU CONTRADICTIONS ALLÉGUÉES.

L'ENTREPRENEUR DOIT VÉRIFIER TOUTES LES DIMENSIONS SUR PLACE ET INFORMER L'ARCHITECTE DE TOUT ÉCART AVANT LE DÉBUT DES TRAVAUX. NE PAS MESURER LES DESSINS À L'ÉCHELLE.

ALL IDEAS, DESIGNS, ARRANGEMENTS, AND PLANS INDICATED OR REPRESENTED BY THIS DRAWING ARE OWNED BY AND THE PROPERTY OF EDWARD J. CUHACI AND ASSOCIATES INC. AND WERE CREATED, DEVELOPED, AND DEVELOPED FOR USE ON AND IN CONNECTION WITH THE SPECIFIED PROJECT. NONE OF THE IDEAS, DESIGNS, ARRANGEMENTS OR PLANS SHALL BE USED BY OR DISCLOSED TO ANY PERSON, FIRM, OR CORPORATION FOR ANY PURPOSE WHATSOEVER WITHOUT THE WRITTEN PERMISSION OF EDWARD J. CUHACI AND ASSOCIATES INC.

THE ARCHITECT WAIVES ANY AND ALL RESPONSIBILITY AND LIABILITY FOR PROBLEMS WHICH ARISE FROM FAILURE TO FOLLOW THESE PLANS, SPECIFICATIONS, AND THE DESIGN INTENT THEY CONVEY, OR FOR PROBLEMS WHICH ARISE FROM OTHERS' FAILURE TO OBTAIN AND/OR FOLLOW THE ARCHITECT'S GUIDANCE WITH RESPECT TO ANY ERRORS, OMISSIONS, INCONSISTENCIES, AMBIGUITIES OR CONFLICTS WHICH ARE ALLEGED.

CONTRACTOR TO VERIFY ALL DIMENSIONS AND NOTIFY THE ARCHITECT OF ANY DISCREPANCIES BEFORE WORK COMMENCES. DO NOT SCALE DRAWINGS



EDWARD J. CUHACI & ASSOCIATES ARCHITECTS INC.
1111 Queen St. Suite 101, Ottawa, Ontario, K1R 0Y1
Tel: 813-236-3848 Fax: 813-236-3848 Email: info@edjca.com

PROJET/TITRE/TITRE DU PROJET:
ÉCOLE SECONDAIRE CATHOLIQUE PAUL-DESARNAIS - DÔME
5315 ABBOTT STREET
OTTAWA, ON

CONSEIL DES ÉCOLES CATHOLIQUES DU CENTRE-EST
4000, RUE LABELLE, OTTAWA, ON K1J 1A1

ENLARGED SITE PLAN

SCALE	EDUCHELLE	PROJ. No.	ISSUE No.	REV. No.
1:250	1:250	1714	2	1

DRAWN BY: DESIGNE PAR: S.R. DRAWING/DESSIN: A002

CHECKED BY: VÉRIFIÉ PAR: J.J.

DATE: JULY 2017