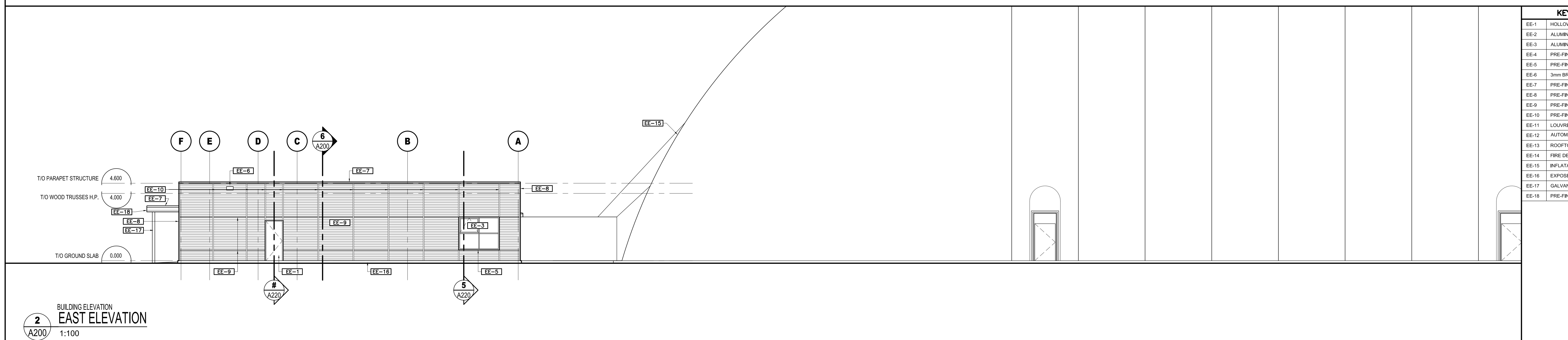


1
BUILDING ELEVATION
SOUTH ELEVATION
A200 1:100

MATERIALS LEGEND

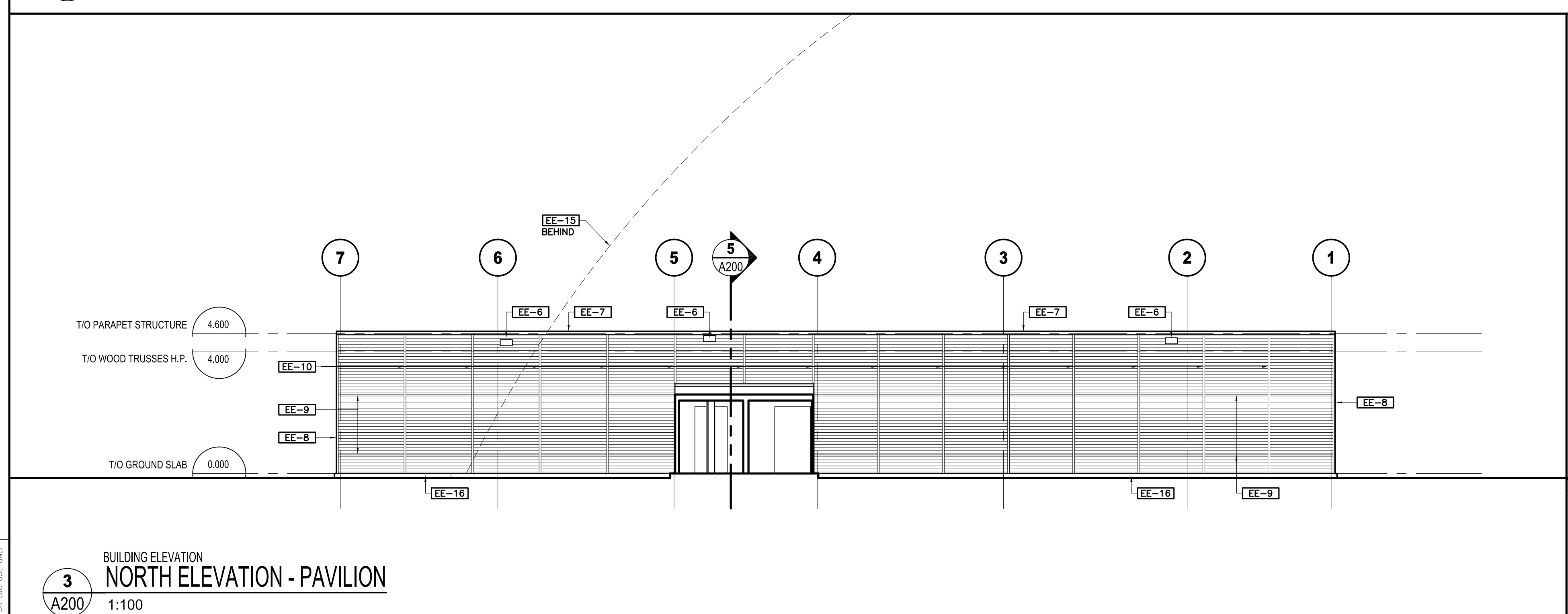
[Symbol]	PRE-FINISHED METAL SIDING INSTALLED HORIZONTALLY FIELD COLOUR
[Symbol]	PRE-FINISHED METAL SIDING INSTALLED HORIZONTALLY ACCENT COLOUR
[Symbol]	INSULATED SPANDREL GLAZING WITH INSULATED BACK PAN BEHIND IN ALUMINUM CURTAIN WALL
[Symbol]	WISCON INSULATED GLASS UNITS IN ALUMINUM CURTAIN WALL
[Symbol]	PERFORMED ALUMINUM
[Symbol]	GYPSUM BOARD, PAINTED
[Symbol]	CONCRETE BLOCK, PAINTED



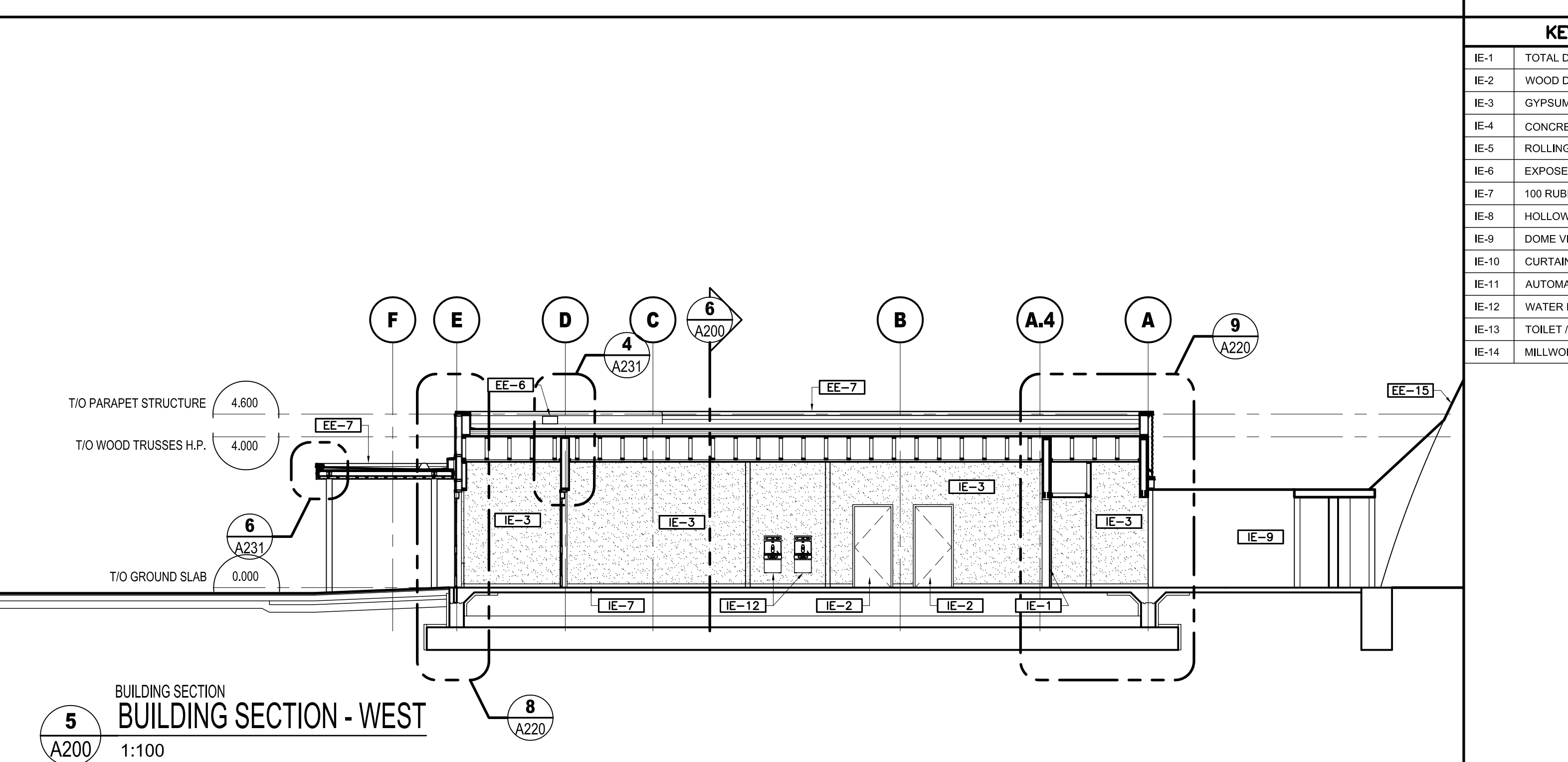
2
BUILDING ELEVATION
EAST ELEVATION
A200 1:100

KEY NOTES - EXTERIOR ELEVATION

EE-1	HOLLOW METAL DOOR WITH PRESSED METAL FRAME, PAINTED
EE-2	ALUMINUM SWING DOOR
EE-3	ALUMINUM CURTAIN WALL SYSTEM
EE-4	PRE-FINISHED ALUMINUM CLOSURE
EE-5	PRE-FINISHED METAL WINDOW OR LOUVRE SILL
EE-6	3mm BRAKE FORMED ALUMINUM ROOF OVERFLOW SCUPPER
EE-7	PRE-FINISHED METAL CAP FLASHING
EE-8	PRE-FINISHED METAL CORNER TRIM
EE-9	PRE-FINISHED METAL HORIZONTAL DIVIDER TRIM
EE-10	PRE-FINISHED METAL VERTICAL DIVIDER TRIM
EE-11	LOUVRE, REFER TO MECHANICAL DRAWINGS
EE-12	AUTOMATIC DOOR OPERATOR (ADO)
EE-13	ROOFTOP UNIT, REFER TO MECHANICAL DRAWINGS
EE-14	FIRE DEPARTMENT CONNECTION
EE-15	INFILTABLE STRUCTURE DOME
EE-16	EXPOSED FOUNDATION WALL - ARCHITECTURAL CONCRETE FINISH
EE-17	GALVANIZED STEEL COLUMN, PAINTED
EE-18	PRE-FINISHED METAL FASCIA C/W DRIP EDGE



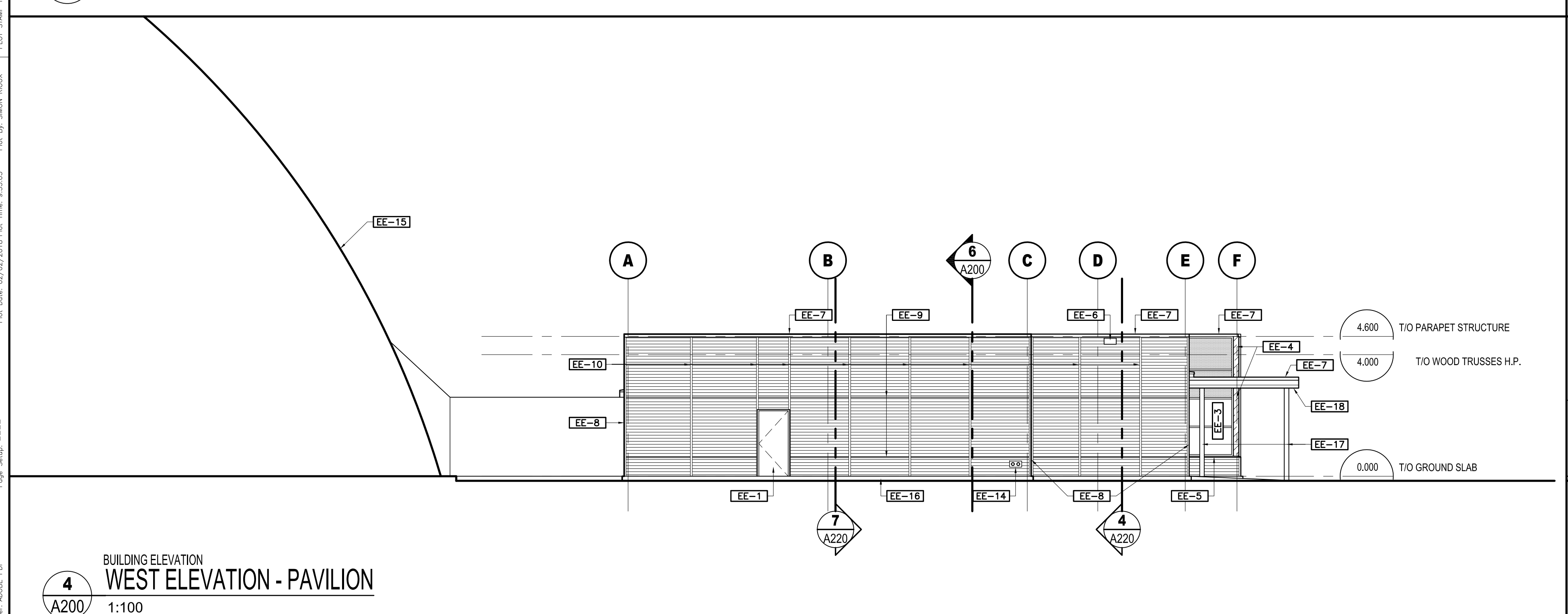
3
BUILDING ELEVATION
NORTH ELEVATION - PAVILION
A200 1:100



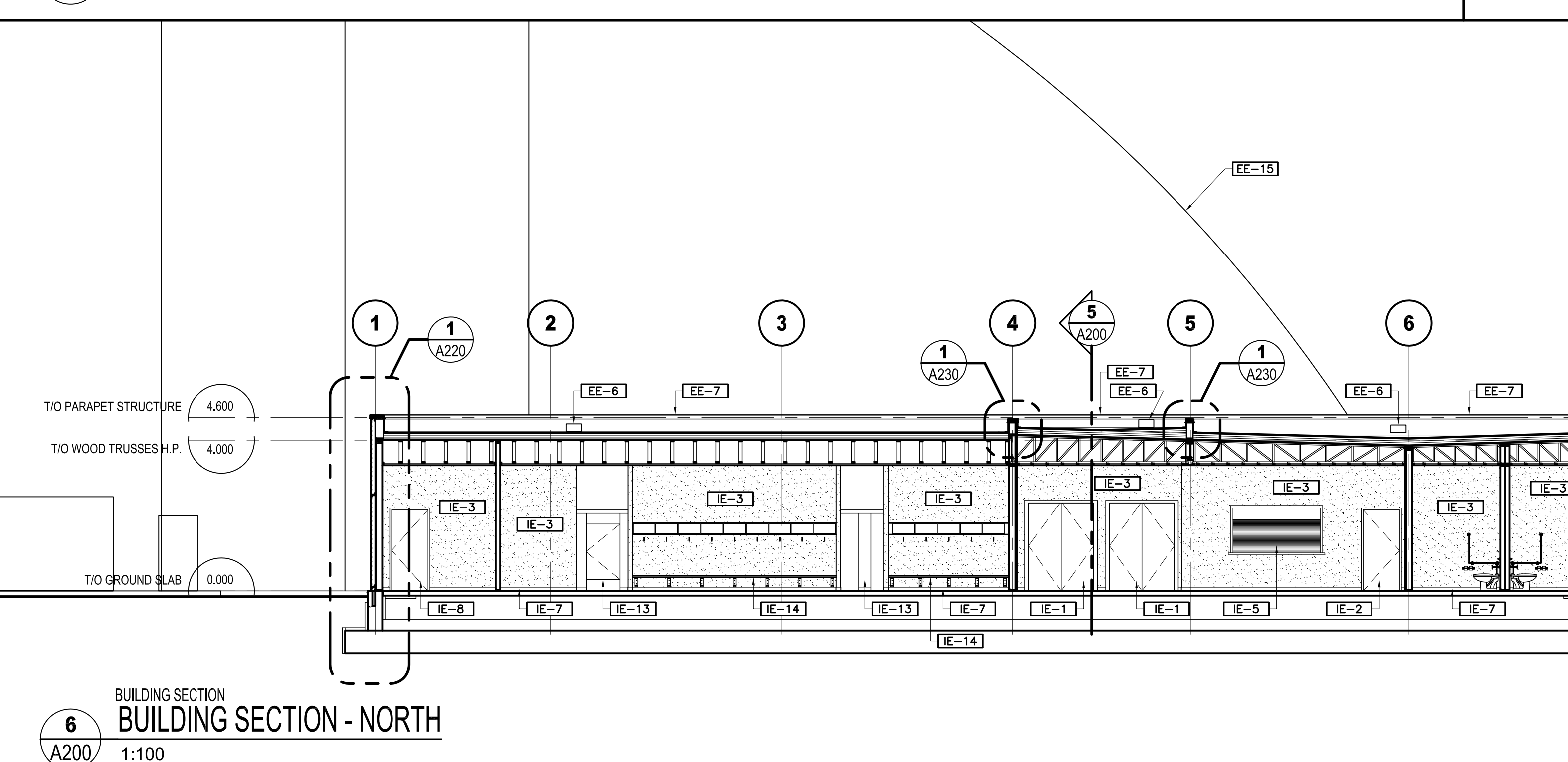
5
BUILDING SECTION
BUILDING SECTION - WEST
A200 1:100

KEY NOTES - INTERIOR ELEVATION

IE-1	TOTAL DOOR WITH PAINTED PRESSED METAL FRAME
IE-2	WOOD DOOR WITH PAINTED PRESSED METAL FRAME
IE-3	GYPSUM BOARD, PAINTED
IE-4	CONCRETE BLOCK, PAINTED
IE-5	ROLLING COUNTER DOOR SYSTEM
IE-6	EXPOSED STRUCTURAL STEEL COLUMN, PAINT FINISH
IE-7	100 RUBBER WALL BASE
IE-8	HOLLOW METAL DOOR WITH PAINTED PRESSED METAL FRAME
IE-9	DOME VESTIBULE AND BUILDING ATTACHMENT AREA
IE-10	CURTAIN WALL WINDOW
IE-11	AUTOMATIC DOOR OPERATOR (ADO)
IE-12	WATER FOUNTAIN
IE-13	TOILET / SHOWER PARTITION
IE-14	MILLWORK CHANGE ROOM BENCH



4
BUILDING ELEVATION
WEST ELEVATION - PAVILION
A200 1:100



6
BUILDING SECTION
BUILDING SECTION - NORTH
A200 1:100

1	0	08/24/2017	ISSUED FOR SITE PLAN CONTROL
ISSUE NO.	REV.	DATE	ISSUE

LES IDÉES, CONCEPTS, DISPOSITIONS ET PLANS MONTRÉS OU REPRÉSENTÉS PAR CE DESSIN APPARTIENNENT À EDWARD J. CUHACI AND ASSOCIATES ARCHITECTS INC. ET ONT ÉTÉ CRÉÉS, ET DÉVELOPPÉS POUR ÊTRE UTILISÉS DANS LE CADRE DU PRÉSENT PROJET. ILS NE DOIVENT PAS ÊTRE UTILISÉS À D'AUTRES FINS NI COMMUNIQUÉS À QUI QUE CE SOIT SANS LA PERMISSION ÉCRITE DE EDWARD J. CUHACI AND ASSOCIATES ARCHITECTS INC.

L'ARCHITECTE DÉCLINE TOUTE RESPONSABILITÉ DÉCOULANT DE PROBLÈMES FAISANT SUITE AU NON RESPECT DES PLANS ET DEVIS OU DE L'INTENTION DU CONCEPT QU'ILS TRANSMETTENT, OU DE TOUTS PROBLÈMES POUVANT RÉSULTER DU DÉFAUT DE TIERS D'OBTENIR OU DE SUIVRE LES INSTRUCTIONS DE L'ARCHITECTE RELATIVEMENT AUX ERREURS, OMISSIONS, INCOHÉRENCES, AMBIGUITÉS OU CONTRADICTIONS ALLÉGUÉES.

L'ENTREPRENEUR DOIT VÉRIFIER TOUTES LES DIMENSIONS SUR PLACE ET INFORMER L'ARCHITECTE DE TOUT ÉCART AVANT LE DÉBUT DES TRAVAUX. NE PAS MESURER LES DESSINS À L'ÉCHELLE.

ALL IDEAS, DESIGNS, ARRANGEMENTS, AND PLANS INDICATED OR REPRESENTED BY THIS DRAWING ARE OWNED BY AND THE PROPERTY OF EDWARD J. CUHACI AND ASSOCIATES INC. AND WERE CREATED, EVOLVED, AND DEVELOPED FOR USE ON AND IN CONNECTION WITH THE SPECIFIED PROJECT. NONE OF THE IDEAS, DESIGNS, ARRANGEMENTS OR PLANS SHALL BE USED BY OR DISCLOSED TO ANY PERSON, FIRM, OR CORPORATION FOR ANY PURPOSE WHATSOEVER WITHOUT THE WRITTEN PERMISSION OF EDWARD J. CUHACI AND ASSOCIATES INC.

THE ARCHITECT WAIVES ANY AND ALL RESPONSIBILITY AND LIABILITY FOR PROBLEMS WHICH ARISE FROM FAILURE TO FOLLOW THESE PLANS, SPECIFICATIONS, AND THE DESIGN INTENT THEY CONVEY, OR FOR PROBLEMS WHICH ARISE FROM OTHERS' FAILURE TO OBTAIN AND/OR FOLLOW THE ARCHITECT'S GUIDANCE WITH RESPECT TO ANY ERRORS, OMISSIONS, INCONSISTENCIES, AMBIGUITIES OR CONFLICTS WHICH ARE ALLEGED.

CONTRACTOR TO VERIFY ALL DIMENSIONS AND NOTIFY THE ARCHITECT OF ANY DISCREPANCIES BEFORE WORK COMMENCES. DO NOT SCALE DRAWINGS

EDWARD J. CUHACI & ASSOCIATES ARCHITECTS INC.
171 Queen St. Suite 101, Ottawa, Ontario K1P 0K1
Tel: 613 236-1844 Fax: 613 236-7115 Email: eh@edjca.com

PROJET / TITLE / TITRE DU PROJET
ÉCOLE SECONDAIRE CATHOLIQUE PAUL-DESMARAIS - DÔME
5315 ABBOTT STREET OTTAWA, ON

CONSEIL DES ÉCOLES CATHOLIQUES DU CENTRE-EST
4000, RUE LABELLE, OTTAWA, ON K1J 1A1

DRAWING / TITRE / TITRE DU DESSIN
ELEVATIONS BUILDING SECTIONS

SCALE / ÉCHELLE	1:100	PROJ. NO. / PROJ. NO.	1714	ISSUE NO. / REV. NO.	1 / 0
DRAWN BY / DESSINÉ PAR	S.R.	DRAWING/DESIGN			
CHECKED BY / VÉRIFIÉ PAR	J.J.	A200			
DATE	AUGUST 2017	ACAO FILE/FICHER	1714-A200-DWG		