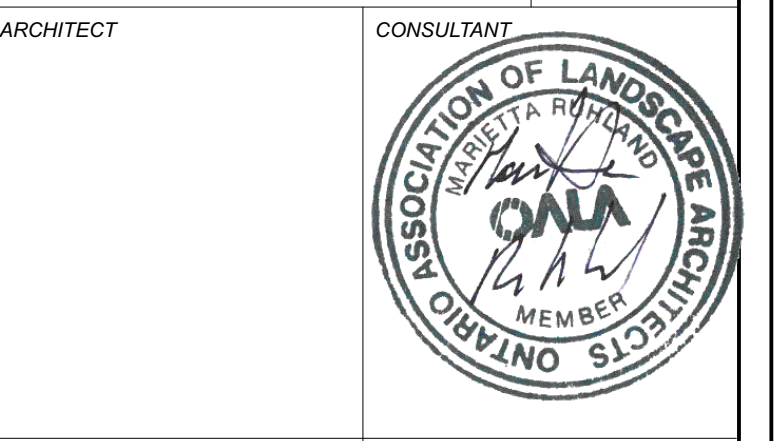


GENERAL NOTES

- All general site information and conditions compiled from existing plans, surveys and consultant's field notes. Report all discrepancies prior to any work. No responsibility is born by the Consultant for unknown subsurface conditions.
- The location of the utilities is approximate only, and the exact location should be determined by consulting the municipal authorities and utility companies concerned. The Contractor shall prove the location of utilities and shall be responsible for adequate protection from damage.
- All dimensions shown are to be verified on site prior to any construction. No deviations are to be made from the layouts as shown on this plan without prior consultation with the Landscape Architect and Owner.
- Obtain approval of the Consultant(s) for granular base and layout of all pavement areas prior to construction.
- Stake planting locations and receive approval of Landscape Architect, prior to excavation of any planting pits. No substitutions of plant material shall be made without prior approval of the Landscape Architect.
- Where clay is encountered proper drainage must be ensured in tree/shrub pits, prior to planting. Have method approved by Landscape Architect.
- Maintain positive surface runoff through the entire construction period.
- Reinstate all areas and items damaged as a result of construction activities.

6		
5	Re-issued for Site Plan Control	2025/04/08
4	Re-issued for Site Plan Control	2024/11/29
3	Re-issued for Site Plan Control	2023/12/13
2	Re-issued for Site Plan Control	2023/11/01
1	Issued for Site Plan Control	2023/07/18

DESIGNED BY / CONDUIT PAR	CHECKED BY / VERIFIE PAR
A. Ahmed / M. Ruhland	M. Ruhland
DRAWN BY / DESINE PAR	SCALE / ECHELLE
T. Frost / V. Odusanya	1:100



ARCHITECT	CONSULTANT
CONSULTANT	CONSULTANT

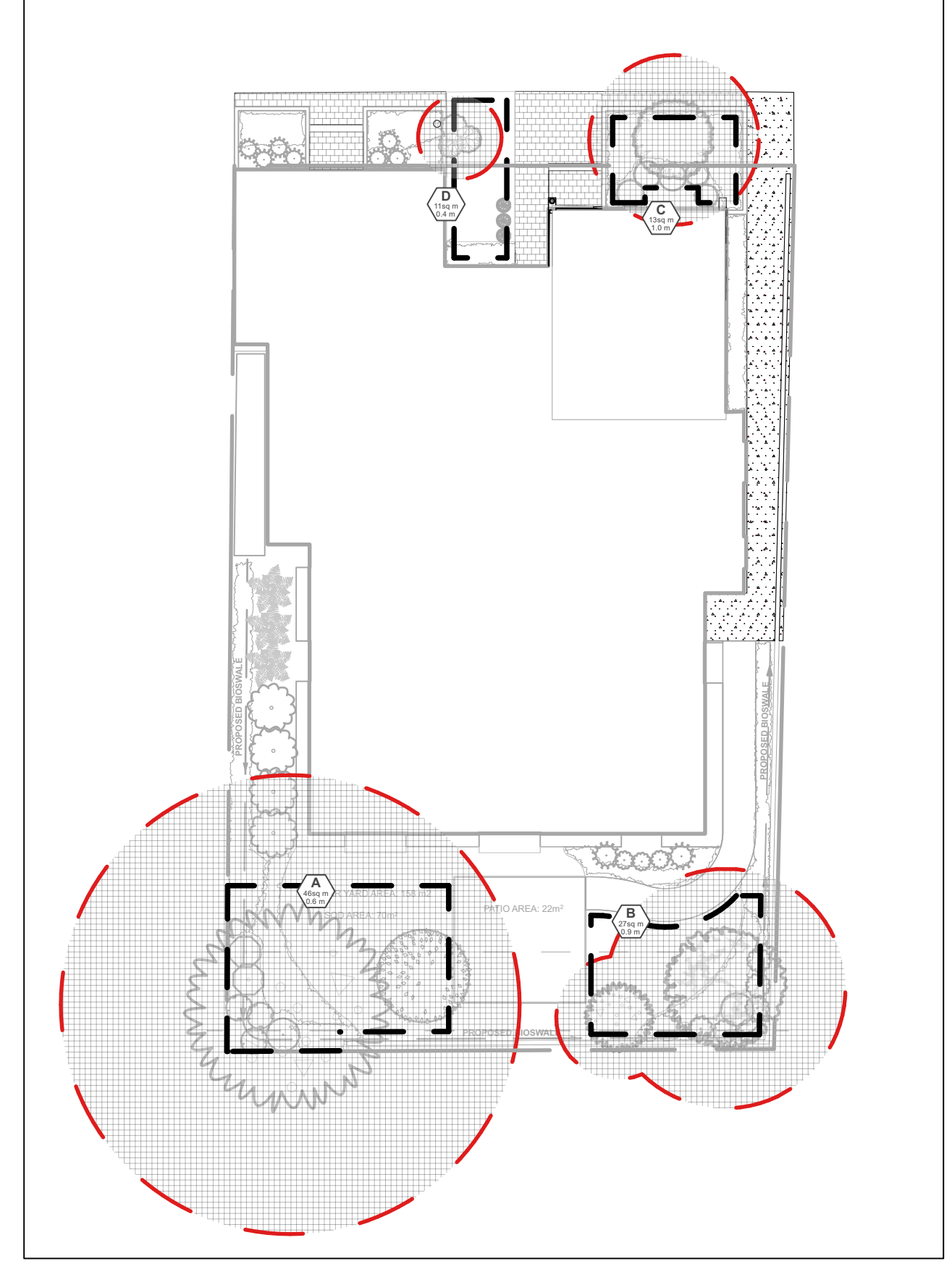
PROJECT / LOCATION
168 - 174 MURRAY STREET ADDITION

168 - 174 MURRAY STREET
OTTAWA, ONTARIO
LOT 23, REGISTERED PLAN 42482, CITY OF OTTAWA

DRAWING
LANDSCAPE / PLANTING PLAN

SHEET NO.	L - 01
PROJECT NO.	
22-1682	

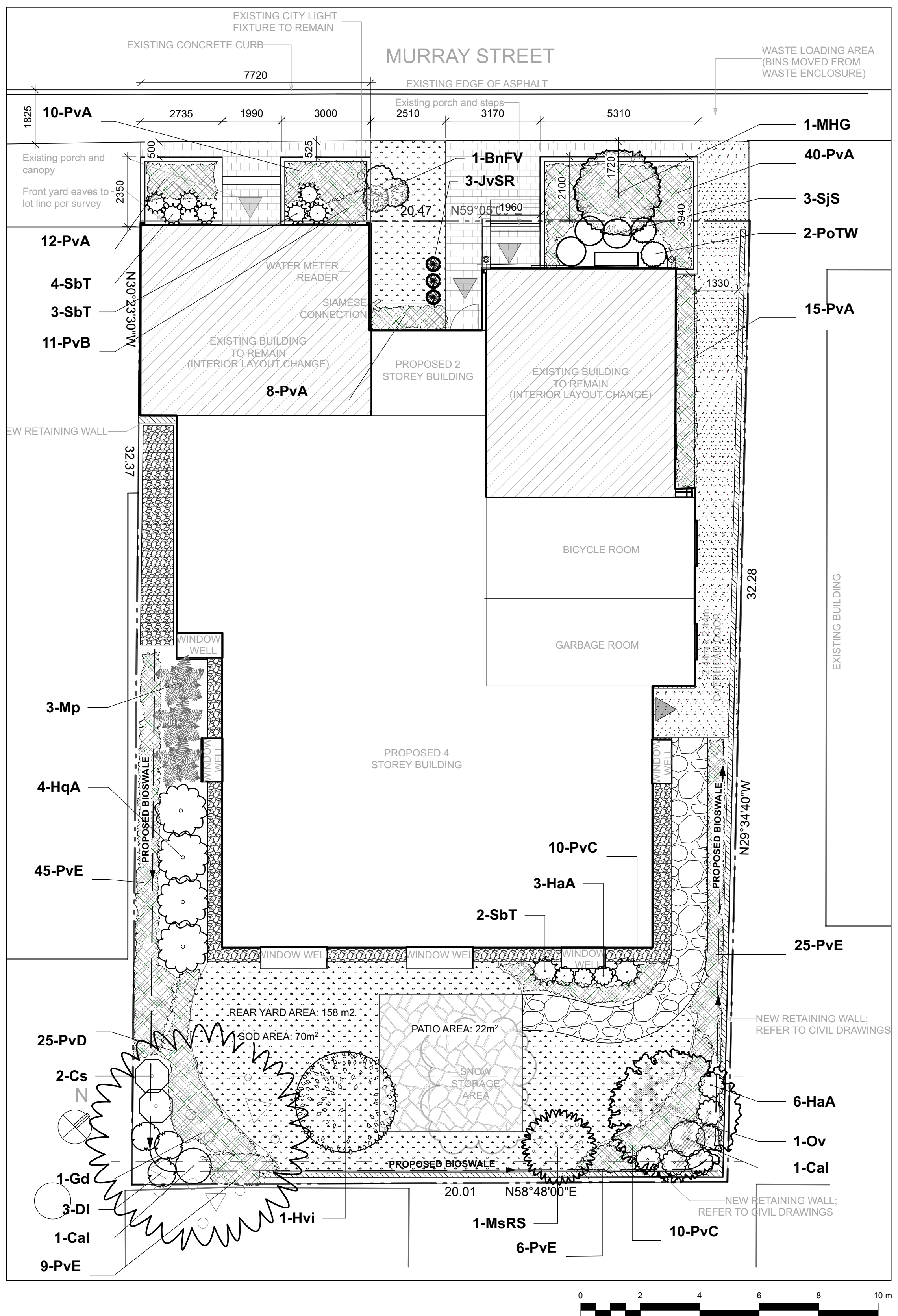
NOTE:
THIS PLAN IS ISSUED FOR SITE PLAN CONTROL SUBMISSION ONLY. ADDITIONAL DETAILING AND SPECIFICATIONS ARE REQUIRED PRIOR TO TENDERING OR CONSTRUCTION.
THIS PLAN TO BE READ IN CONJUNCTION WITH TCR BY DENDRON FORESTRY SERVICES. EXISTING TREES TO BE PRESERVED AND PROTECTED AS PER TCR.
SERVICING INFORMATION SHOWN AS REFERENCE ONLY. REFER TO CIVIL DRAWINGS.



LEGEND

- SOIL VOLUME AREA AND IDENTIFIER
- MATURE TREE CANOPY AREA

TREE CANOPY COVERAGE	
TOTAL CANOPY AREA	326 m ²
TOTAL SITE AREA	654 m ²
PERCENT COVERAGE	50%



LEGEND

- PROPERTY LINE
- PROPOSED BIOSWALE
- RETAINED EXISTING BUILDING
- PROPOSED RETAINING WALL
- PEASTONE MAINTENANCE EDGE
- C.I.P. CONCRETE PATH
- PRECAST CONCRETE PAVERS TYP.1
- PRECAST CONCRETE PAVERS TYP.2
- STEPPING STONE PATH
- PROPOSED SOD
- PROPOSED PERENNIALS

SOIL VOLUME CHART:

Soil Volume Area, Tree Quantity and Size	Tree Quantity	OTTAWA Target Soil Volume (m ³)	Design Soil Volume	Soil Adequacy percentage	Tree Ownership
AREA A - 1 large tree, 1 ornamental tree plant bed (46 sq m x 0.6 ave metre deep)	2	27.0	27.6	102%	Private
AREA B - 1 medium tree, 1 ornamental tree plant bed (26.5 sq m x 0.9 ave metre deep)	2	24.0	23.9	99%	Private
AREA C - 1 ornamental tree plant bed (13 sq m x 1 ave metre deep)	1	15.0	13.0	87%	City
AREA D - 1 small ornamental tree (8cm DBH)* plant bed (11 sq m x 0.45 ave metre deep)	1	5.0	5.0	99%	City

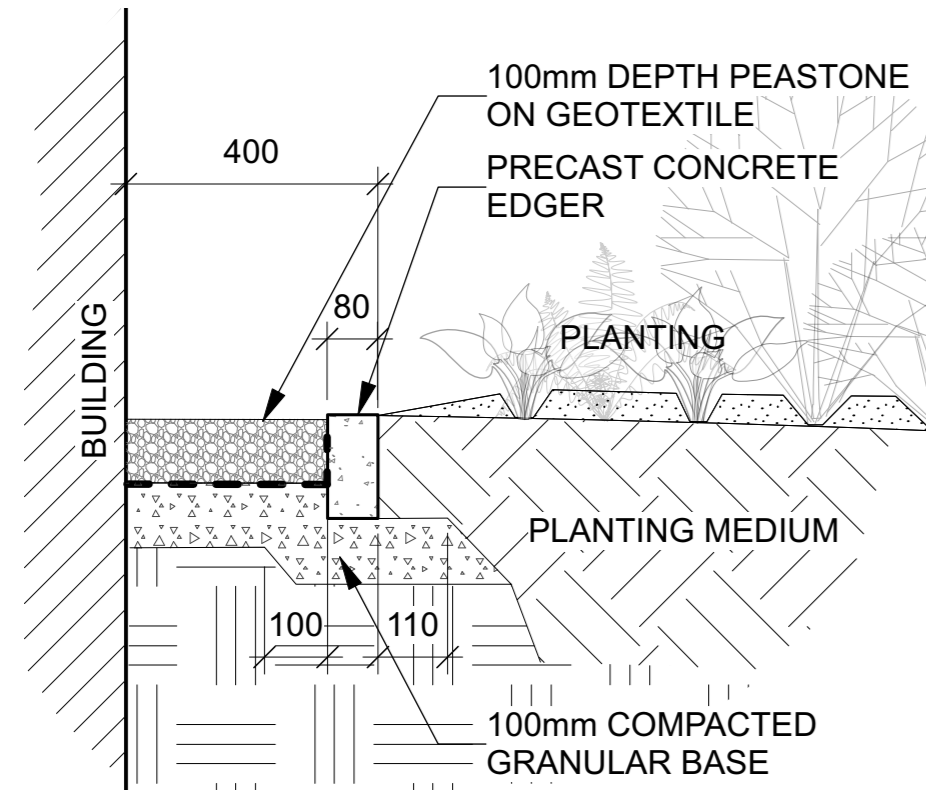
* Smaller columnar trees, small ornamental trees with growth to 8-15cm DBH, large shrubs, and columnar conifers calculated using 'How much soil to grow a big tree' by DeepRoot as a guide

Plant List						
Origin	ID	Qty	Botanical Name	Common Name	Sched. Size	Remarks
LARGE TREES						
Ntv	Gd	1	Gymnocladus dioicus	Kentucky Coffee Tree	70mm caliper	WB, Staked
MEDIUM TREES						
Ntv	Ov	1	Ostrya virginiana	Ironwood	50mm caliper	WB, Staked
ORNAMENTAL TREES						
Ntv	Hvi	1	Hamelis virginiana	Virginia Witch Hazel	50mm caliper	WB, Staked
Non N	MsRS	1	Magnolia stellata 'Royal Star'	Royal Star Magnolia	45mm caliper	WB, Staked
Non N	MHG	1	Malus x 'Harvest Gold'	Harvest Gold Crabapple	50mm caliper	WB, Staked
SMALL ORNAMENTAL TREES*						
Ntv	BnFV	1	Betula nigra 'Little King'	Fox Valley River Birch	150cm ht	WB Staked
SHRUBS						
Ntv	Cal	2	Clethra alnifolia	Summersweet Clethra	50cm ht	
Ntv	Cs	2	Cornus sericea (stolonifera)	Red Twiggged Dogwood	50cm ht	
Ntv	DI	3	Diervilla lonicera	Dwarf Bush Honeysuckle	50cm ht.	
Ntv	HaA	9	Hydrangea arborescens 'Annabelle'	Annabelle Hydrangea	2 gallon pot	
Ntv	HqA	4	Hydrangea quercifolia 'Amethyst'	Amethyst Oakleaf Hydrangea	2 gallon pot	1.2m o.c.
Ntv	JvSR	3	Juniperus virginiana 'Skyrocket'	Skyrocket Juniper	150cm ht	Potted
Ntv	PoTW	2	Physocarpus opulifolius 'Tiny Wine'	Tiny Wine Ninebark	50cm ht.	
Non N	SbT	9	Spiraea betulifolia 'Tor'	Tor Birchleaf Spirea	50cm ht	
Non N	SJS	3	Spiraea japonica 'Shirobana'	Shirobana Spirea	3 gallon pot	
PERENNIALS						
Ntv	Mp	3	Matteuccia pennsylvanica	Ostrich Fern	2 gallon pot	
Mix	PvA	85	Perennial varieties A	Flowering perennials sun/part shade for roadside		0.5m o.c
Mix	PvB	11	Perennial varieties B	Groundcovers for light foot-traffic		0.3m o.c
Mix	PvC	20	Perennial varieties C	Flowering perennials sun/part shade		0.6m o.c
Mix	PvD	25	Perennial varieties D	Flowering perennials shade/part shade		0.5m o.c
Mix	PvE	85	Perennial varieties E	Flowering perennials shade/part shade moist areas		0.45m o.c.

Plant origin:
Ntv - Native
Ntv H - Native species, horticultural variety
Mix - Mixed: minimum 50% native
Non N - Introduced, non-invasive species

Perennial varieties:
PvA - Purple Coneflower (Ntv), Sea Thrift (Ntv), Black-eyed Susan (Ntv), Daylilies (Non N)
PvB - Irish Moss (Non N), Barren Strawberry (Ntv), Prairie Everlasting (Ntv)
PvC - Daylilies (Non N), Russian Sage (Non N), Purple Coneflower (Ntv), White Blazing Star (Ntv)
PvD - Hosta varieties (Non N), Spotted Geranium (Ntv), Wild Blue Phlox (Ntv), Rodgersia (Non N), Ferns (Ntv)
PvE - Firecracker Yellow Loosestrife (Ntv H), Cardinal Flower (Ntv), Rodgersia (Non N), Blue Flag Iris (Ntv)

Note:
AcB and BnFV between building and Murray street are on City property and will be City owned.



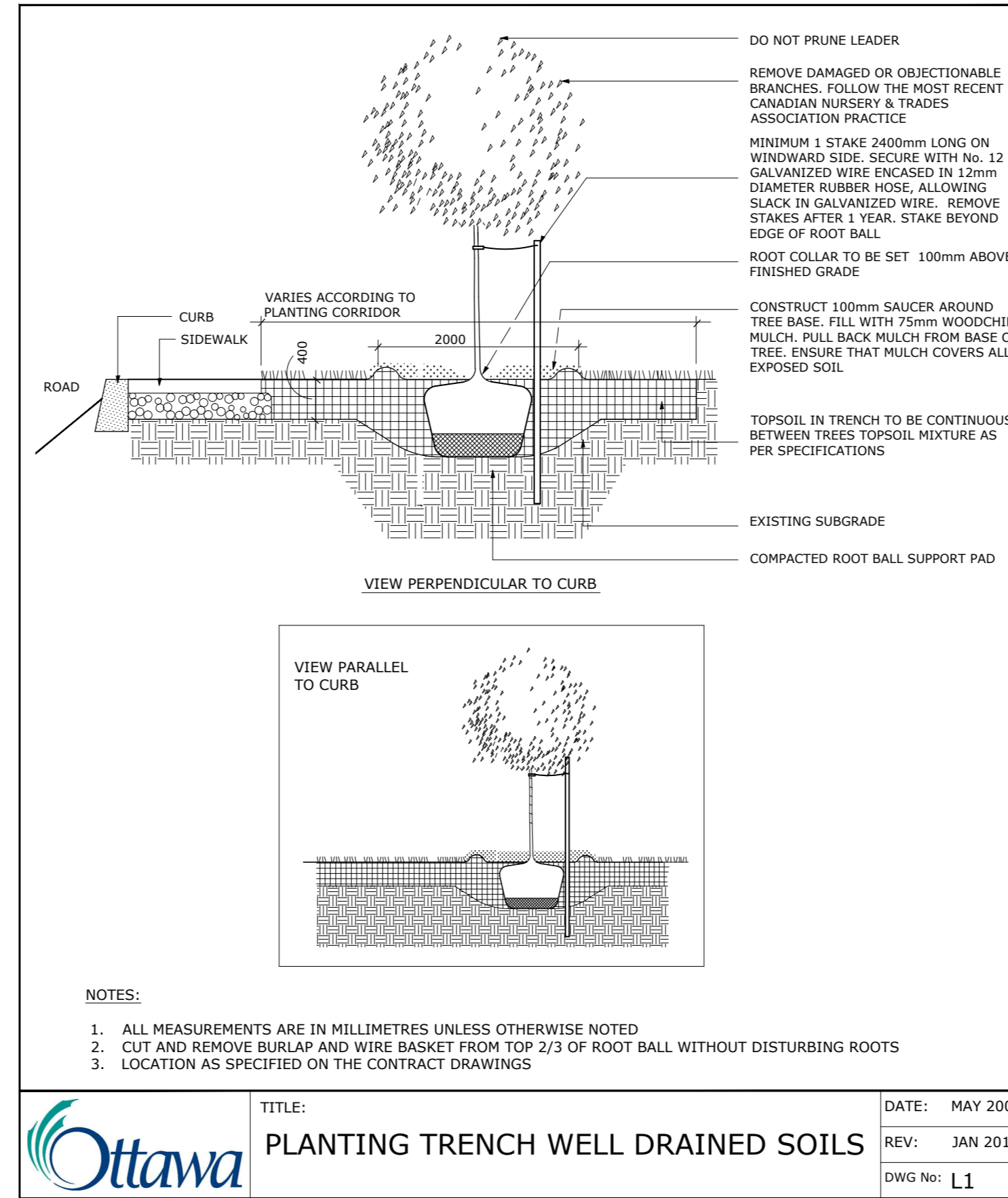
1 Peastone maintenance edge
Scale: NTS

NOTE - TREE SOIL VOLUME REQUIREMENTS: STANDARD TREE SOIL VOLUMES QUANTITIES INCLUDE THE TOP 900-1000mm OF SOIL/EXISTING SUBSOIL LAYER TO CALCULATE TOTAL SOIL VOLUMES REQUIRED BY CITY OF OTTAWA FOR SUSTAINABLE TREE GROWTH. WHERE LARGER SOFT AREAS ARE AVAILABLE, THE TOP 400-500mm LAYER IS USED TO CALCULATE SOIL VOLUMES.

WHERE EXISTING MATERIAL BELOW THE SPECIFIED TOPSOIL IS NOT CONDUCTIVE TO TREE GROWTH, AN ADDITIONAL LAYER OF PLANTING MEDIUM IS TO BE INSTALLED BELOW SPECIFIED TOPSOIL DEPTH TO OBTAIN THE SOIL VOLUME DEPTH REQUIRED.

REFER TO SOIL VOLUME CHART AND PLANS FOR AREA WHERE TREE SOIL VOLUMES ARE REQUIRED.

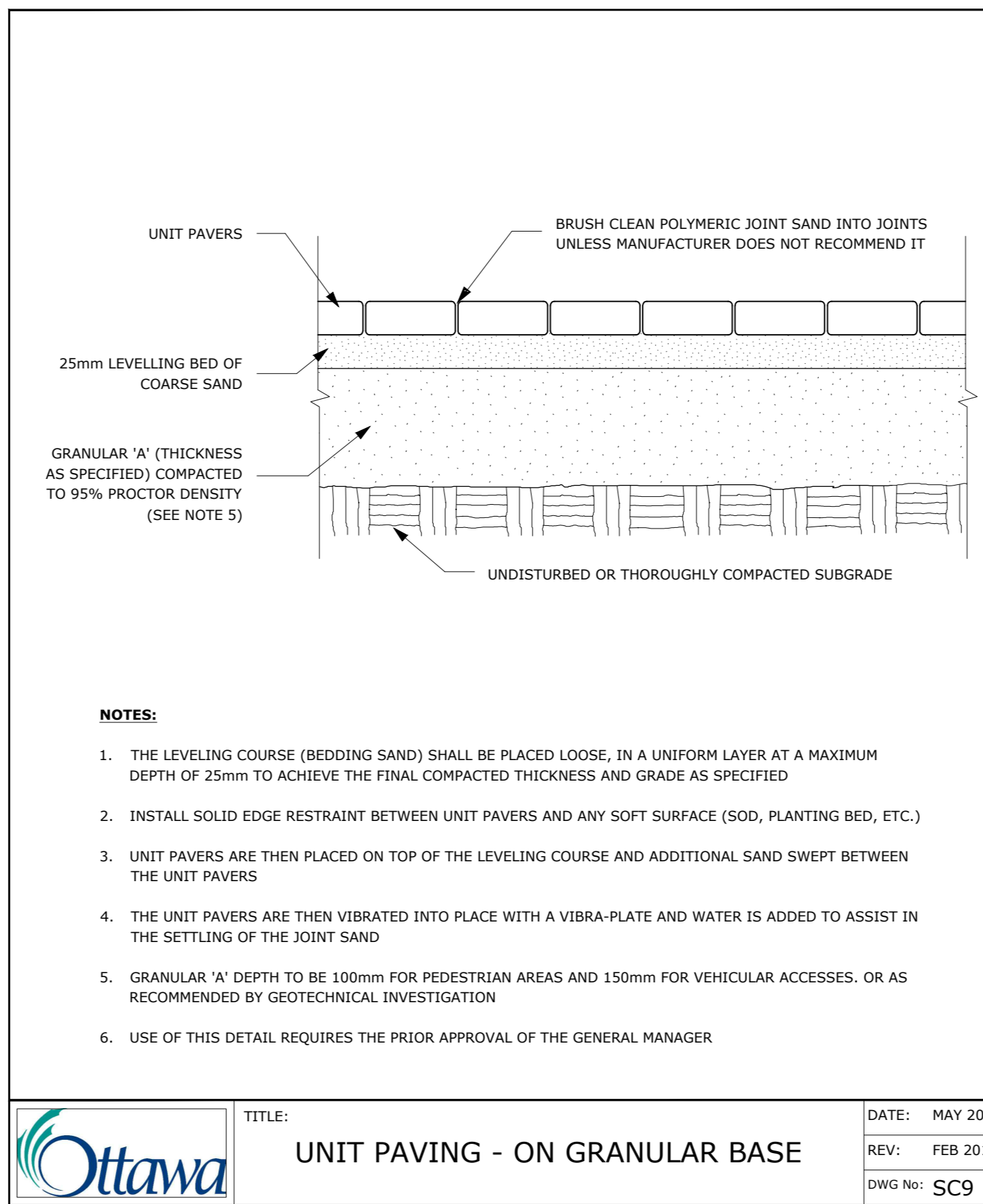
ADDITIONAL NOTES FOR NUMBER 5: PRECAST PAVERS IN PEDESTRIAN AREAS WHERE NORMAL SNOW REMOVALS ARE DONE IS TO RECEIVE A MINIMUM 200mm GRANULAR 'A'. FURTHER ADJUSTMENTS TO BE SPECIFIED IN RELATION TO SITE CONDITIONS AND GEOTECHNICAL RECOMMENDATIONS.



NOTE: TREE SOIL VOLUME REQUIREMENTS: STANDARD TREE SOIL VOLUMES QUANTITIES INCLUDE THE TOP 900-1000mm OF SOIL/EXISTING SUBSOIL LAYER TO CALCULATE TOTAL SOIL VOLUMES REQUIRED BY CITY OF OTTAWA FOR SUSTAINABLE TREE GROWTH. WHERE LARGER SOFT AREAS ARE AVAILABLE, THE TOP 400-500mm LAYER IS USED TO CALCULATE SOIL VOLUMES. WHERE EXISTING MATERIAL BELOW THE SPECIFIED TOPSOIL IS NOT CONDUCTIVE TO TREE GROWTH, AN ADDITIONAL LAYER OF PLANTING MEDIUM IS TO BE INSTALLED BELOW SPECIFIED TOPSOIL DEPTH TO OBTAIN THE SOIL VOLUME DEPTH REQUIRED. REFER TO SOIL VOLUME CHART AND PLANS FOR AREA WHERE TREE SOIL VOLUMES ARE REQUIRED.

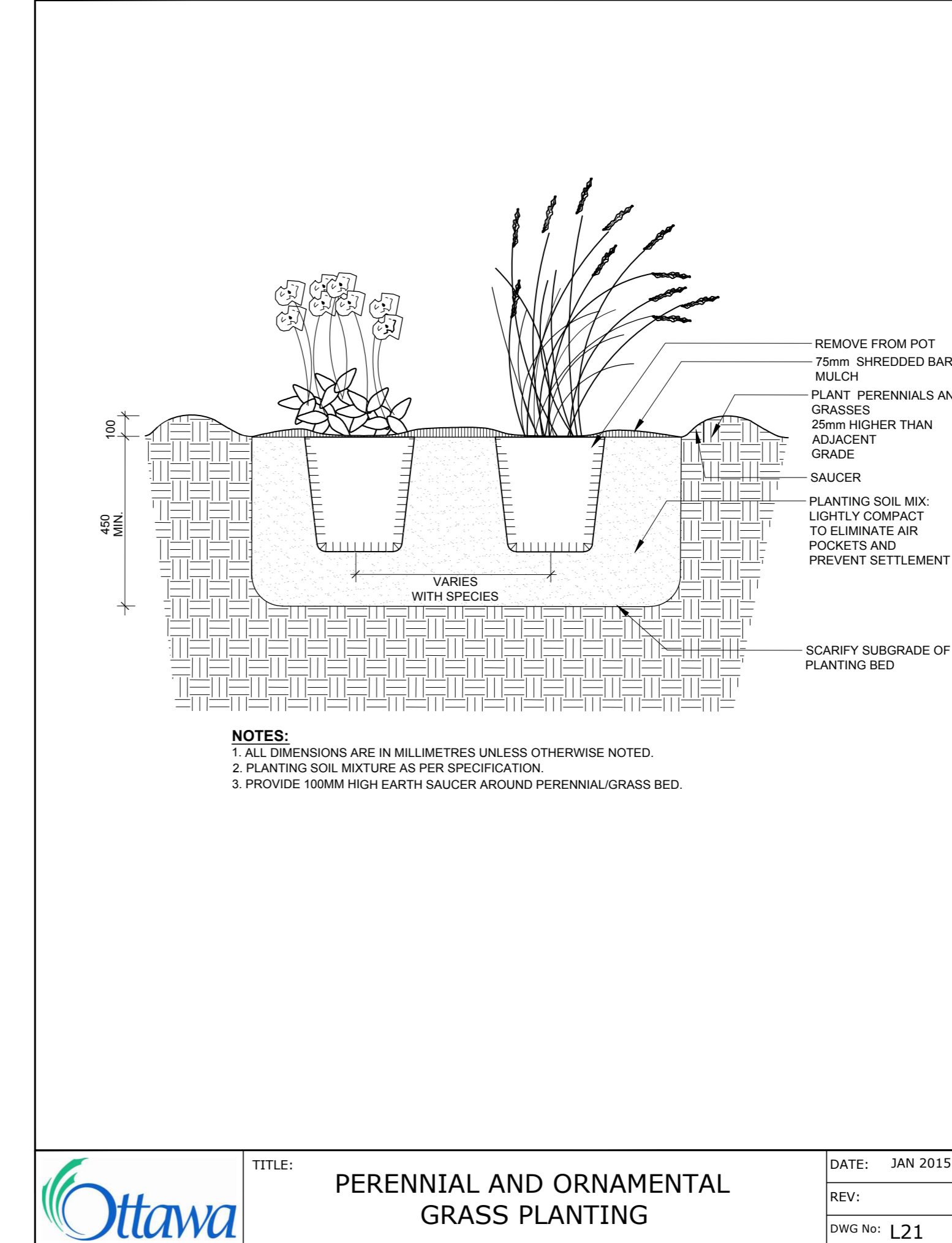
NOTE: 1. ALL MEASUREMENTS ARE IN MILLIMETRES UNLESS OTHERWISE NOTED. 2. CUT AND REMOVE BURLAP AND WIRE BASKET FROM TOP 2/3 OF ROOT BALL WITHOUT DISTURBING ROOTS. 3. LOCATION AS SPECIFIED ON THE CONTRACT DRAWINGS.

DATE: MAY 2001
REV: JAN 2017
DWG No: L1



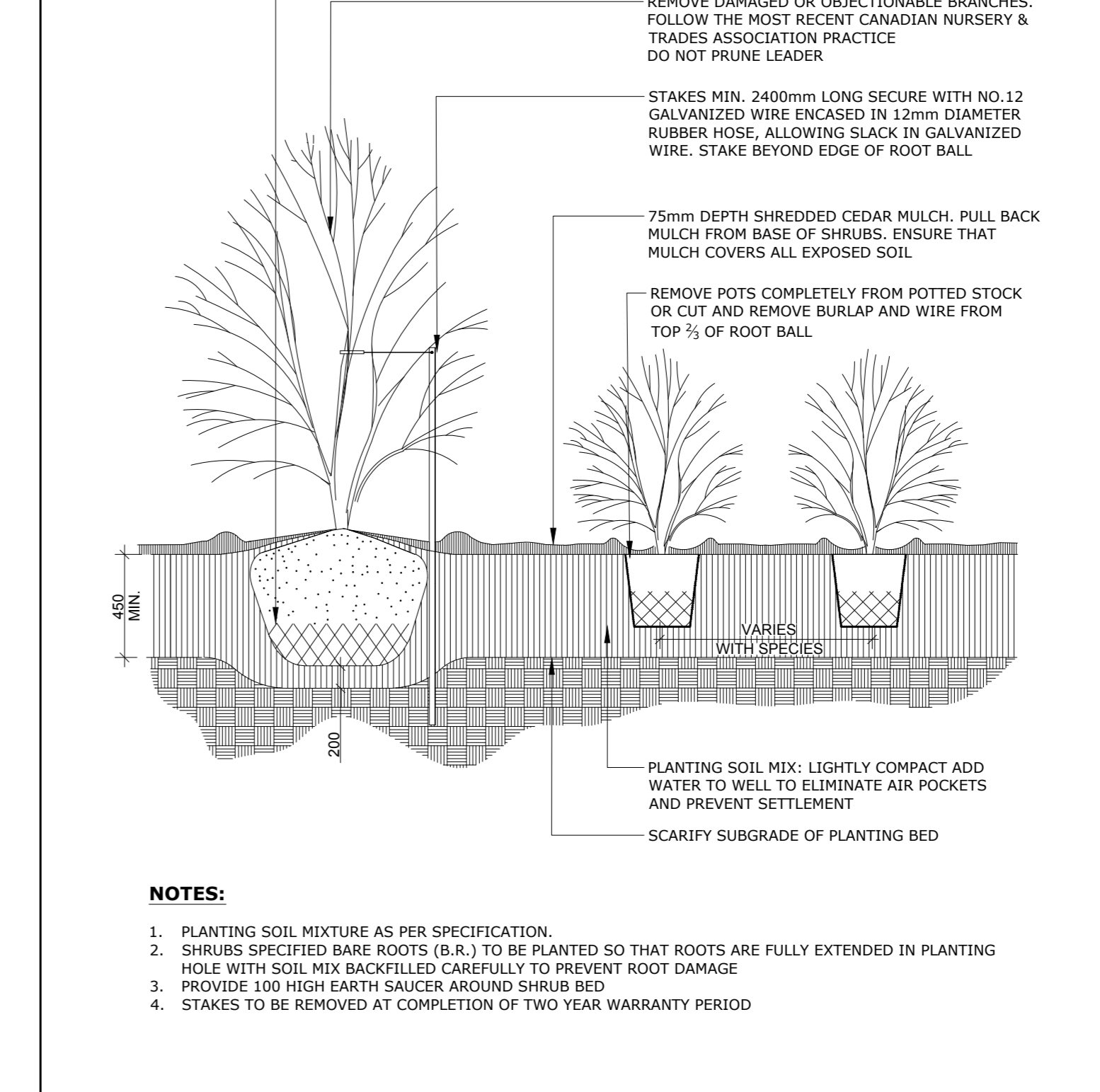
NOTE: ADDITIONAL NOTES FOR NUMBER 5: 100mm DEPTH GRANULAR 'A' TO BE USED (AFTER APPROVAL) ONLY IN PEDESTRIAN WHERE NO SNOW REMOVAL IS PLANNED. ALL OTHER PEDESTRIAN AREAS ARE TO RECEIVE 150mm COMPACTED GRANULAR 'A' MINIMUM, VEHICULAR 200mm MINIMUM. FURTHER ADJUSTMENTS TO BE SPECIFIED IN RELATION TO SITE CONDITIONS AND GEOTECHNICAL RECOMMENDATIONS.

DATE: MAY 2001
REV: FEB 2016
DWG No: SC9



NOTE: 1. ALL DIMENSIONS ARE IN MILLIMETRES UNLESS OTHERWISE NOTED. 2. PLANTING SOIL MIXTURE AS PER SPECIFICATION. 3. PROVIDE 100MM HIGH EARTH SAUCER AROUND PERENNIAL/GRASS BED.

DATE: JAN 2015
REV:
DWG No: L21



NOTE: 1. PLANTING SOIL MIXTURE AS PER SPECIFICATION. 2. SHRUBS SPECIFIED BARE ROOTS (B.R.) TO BE PLANTED SO THAT ROOTS ARE FULLY EXTENDED IN PLANTING HOLE WITH SOIL MIX BACKFILLED CAREFULLY TO PREVENT ROOT DAMAGE. 3. PROVIDE 100 HIGH EARTH SAUCER AROUND SHRUB BED. 4. STAKES TO BE REMOVED AT COMPLETION OF TWO YEAR WARRANTY PERIOD.

DATE: FEB 2013
REV: FEB 2014
DWG No: L17

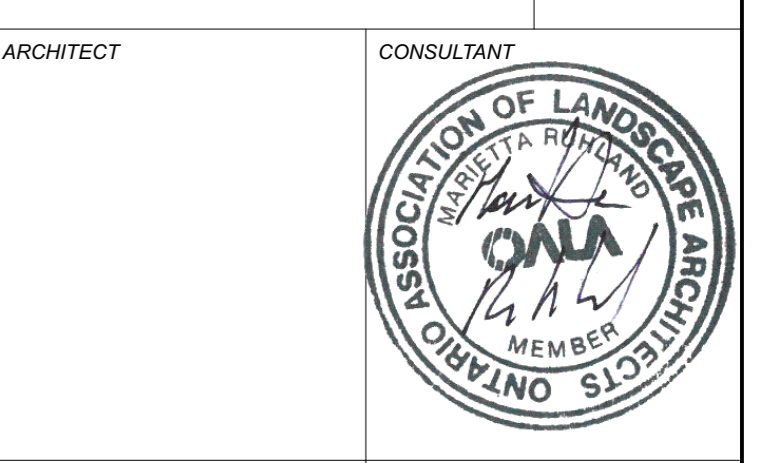
DEVELOPER:
OTTAWA CARLETON CONSTRUCTION GROUP LTD.
37 Sunnyside Avenue, Suite 101 Ottawa, ON K1S 0R9

CONSULTING ENGINEER:
T.L. MAK ENGINEERING CONSULTANTS LTD.
1455 Youville Dr, Orleans, ON K1C 6Z7-

SURVEYOR:
ANNIS, O'SULLIVAN, VOLLEBEKK LTD. - SURVEYOR
14 Concourse Gate Suite 500, Nepean, ON K2E 7S6

6			
5	Re-issued for Site Plan Control	2025/04/08	
4	Re-issued for Site Plan Control	2024/11/29	
3	Re-issued for Site Plan Control	2023/12/13	
2	Re-issued for Site Plan Control	2023/11/01	
1	Issued for Site Plan Control	2023/07/18	

DESIGNED BY / CONDU PAR A. Ahmed / M. Ruhland	CHECKED BY / VERIFIE PAR M. Ruhland
DRAWN BY / DESINE PAR T. Frost / V. Oduanya	SCALE / ECHELLE



ARCHITECT	CONSULTANT
CONSULTANT	CONSULTANT

PROJECT / LOCATION
168 - 174 MURRAY STREET ADDITION

168 - 174 MURRAY STREET
OTTAWA, ONTARIO
LOT 23, REGISTERED PLAN 42482, CITY OF OTTAWA

DRAWING
DETAILS

SHEET NO.
L - 02

PROJECT NO.
22-1682