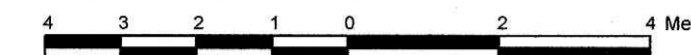


LOT 38 AND PART OF LOT 37 (SOUTH CLEMOW AVENUE) REGISTERED PLAN 4M-8 CITY OF OTTAWA

Surveyed by Annis, O'Sullivan, Vollebek Ltd.

Scale 1:100



Metric DISTANCES SHOWN ON THIS PLAN ARE IN METRES AND CAN BE CONVERTED TO FEET BY DIVIDING BY 0.3048

Surveyor's Certificate

I CERTIFY THAT: 1. This survey and plan are correct and in accordance with the Surveys Act, the Surveyors Act and the regulations made under them. 2. The survey was completed on the 10th day of April, 2024.

Date: April 12, 2024. Signature: Jamie Leslie, Ontario Land Surveyor.

Notes & Legend

- Denotes: Survey Monument Planted, Survey Monument Found, Standard Iron Bar, Short Standard Iron Bar, Iron Bar, Cut Cross, Concrete Pin, Round Iron Bar, Spike & Washer, Short Standard Iron Bar (0.3 Long), Iron Bar (0.3 Long), Registered Plan 4M-14, Registered Plan 4M-8, (1287) Plan Dated December 21, 2005, (AOG) Plan Dated October 2, 1975, (AOG) Plan Dated August 22, 2022, (1319) Plan Dated October 30, 1987, (1287) Plan Dated May 12, 1999, (AOG) Plan Dated May 24, 1988, Description Per Parcel Register for Pin 04134-0192, Overhead Wires, Underground Sanitary Sewer, Underground Water, Gas Meter, Utility Pole, Board Fence, Edge of Interlock, Deciduous Tree, Coniferous Tree, Diameter, Location of Elevations, Top of Concrete Curb Elevation, Interlock Retaining Wall, Concrete Retaining Wall, Fire Hydrant, North/South.

Bearings are grid, derived from Can-Net 2016 Real Time Network GPS observations and are referenced to Specified Control Points 0191968005 and 01919680105, MTM Zone 9 (76°30' West Longitude) NAD-83 (original).

For bearing comparisons, a rotation of 0°32'50" counter-clockwise was applied to bearings on plans P, P1, P2 and P5.

ASSOCIATION OF ONTARIO LAND SURVEYORS PLAN SUBMISSION FORM V-75371

THIS PLAN IS NOT VALID UNLESS IT IS AN EMBOSSED ORIGINAL COPY ISSUED BY THE SURVEYOR in accordance with Regulation 1026, Section 29 (3).

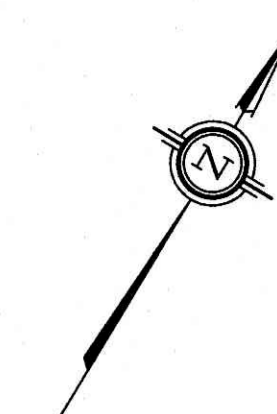
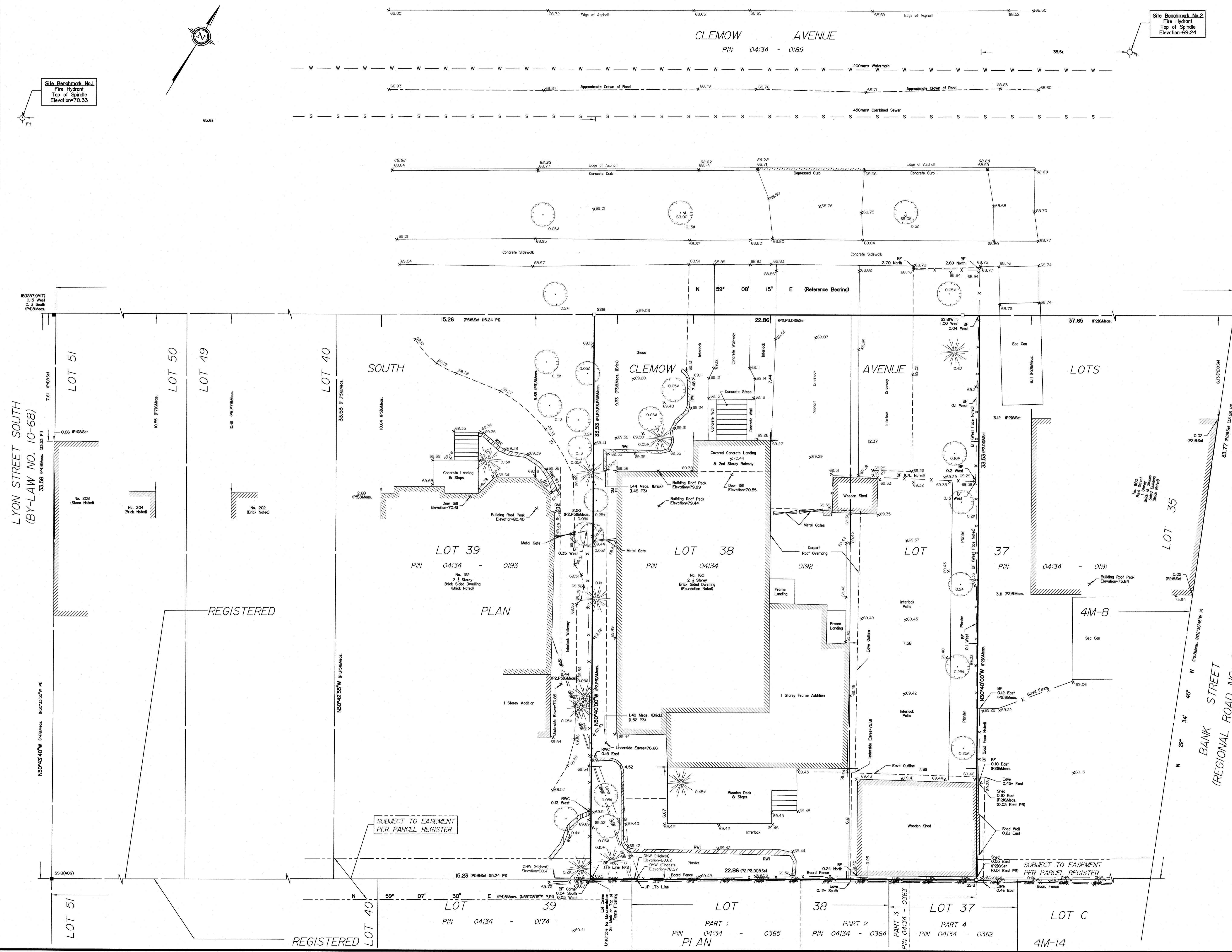
ELEVATION NOTES

- 1. Elevations shown are geodetic and are referred to the CGVD28 geodetic datum and is referenced to City of Ottawa Monument No. 3599, Index No. 160, having a published elevation of 76.50. 2. It is the responsibility of the user of this information to verify that the job benchmark has not been altered or disturbed and that its relative elevation and description agrees with the information shown on this drawing.

UTILITY NOTES

- 1. This drawing cannot be accepted as acknowledging all of the utilities and it will be the responsibility of the user to contact the respective utility authorities for confirmation. 2. Only visible surface utilities were located. 3. Underground utility data derived from City of Ottawa utility sheet reference No. F-12-27-C. 4. A field location of underground plant by the pertinent utility authority is mandatory before any work involving breaking ground, probing, excavating etc.

ANNIS, O'SULLIVAN, VOLLEBEK LTD. 14 Concourse Gate, Suite 500 Nepean, Ont. K2E 7S6 Phone: (613) 727-0850 / Fax: (613) 727-1079 Email: Nepean@annisov.com



Site Benchmark No.1 Fire Hydrant Top of Spindle Elevation=70.33

Site Benchmark No.2 Fire Hydrant Top of Spindle Elevation=69.24

LYON STREET SOUTH (BY-LAW NO. 10-68)

REGISTERED

REGISTERED

SUBJECT TO EASEMENT PER PARCEL REGISTER

SUBJECT TO EASEMENT PER PARCEL REGISTER

LOT 51, LOT 50, LOT 49, LOT 40, LOT 39, LOT 38, LOT 37, LOT C. PIN 04134 - 0174, PIN 04134 - 0365, PIN 04134 - 0364, PIN 04134 - 0362. 4M-14