

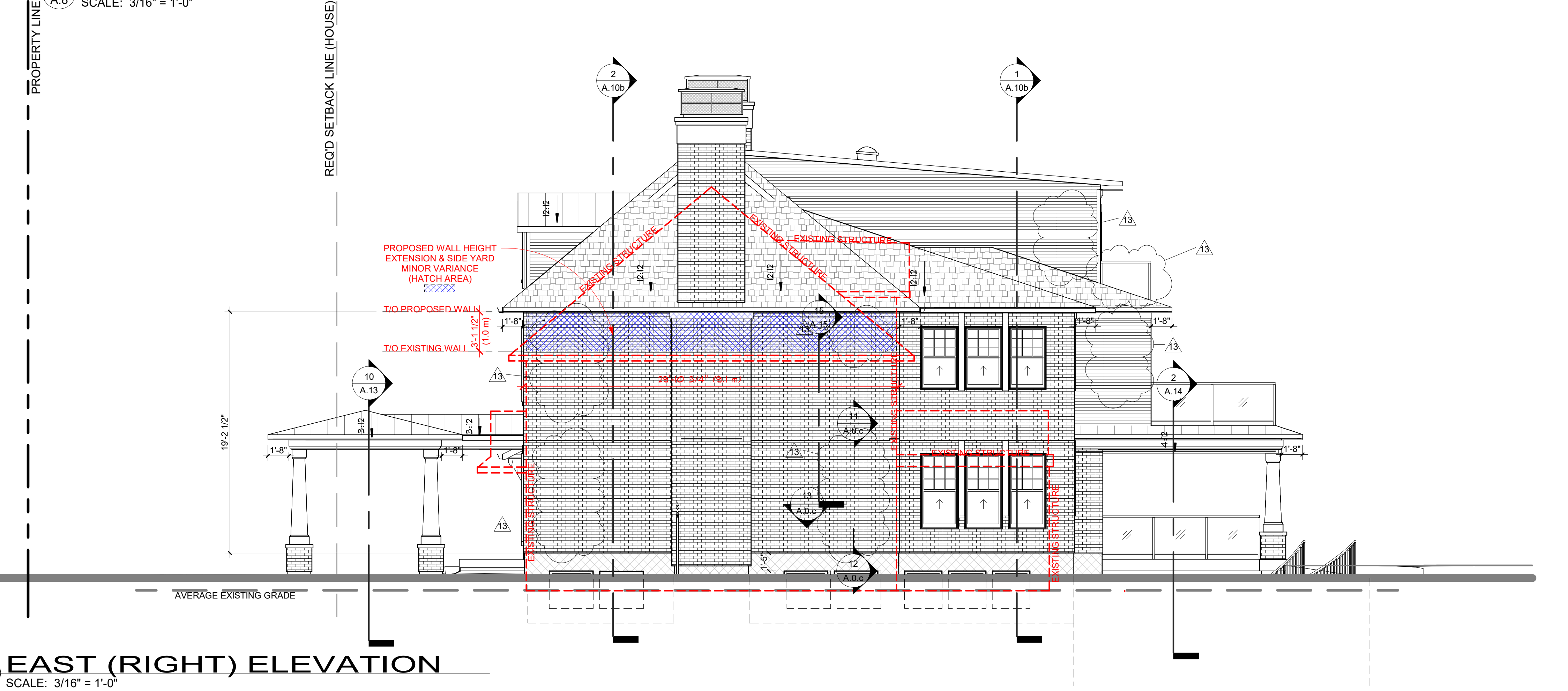


CONTRACTOR TO PROVIDE FINAL MATERIALS TO HERITAGE STAFF FOR REVIEW

EXTERIOR MATERIALS		
NUMBER	MATERIAL	COMMENTS
1	BRICK VENEER	RED COLOUR
2	JAMES HARDIE LAP SIDING	LIGHT GREY COLOUR
3	ASPHALT SHINGLES	BLACK COLOUR
4	METAL ROOF CLADDING	BLACK COLOUR
5	CONCRETE PAVING	GREY COLOUR
6	CONCRETE PORCH FLOOR	SMOOTH POLISHED FINISH
7	WINDOWS	ALUMINUM CLAD WOOD
8	WINDOW SHUTTERS	SUPPLIED BY:
9	PORCH COLUMNS	STEEL COLUMN WITH PRE FINISHED METAL FLASHING

1 SOUTH (FRONT) ELEVATION

SCALE: 3/16" = 1'-0"



2 EAST (RIGHT) ELEVATION

SCALE: 3/16" = 1'-0"

NOTES:
REFER TO GENERAL NOTES FOR ALL TYPICAL CONSTRUCTION NOTES & DETAILS. WHEN DRAWINGS OR NOTES REFERENCE O.B.C. IN ALL CASES PLEASE REFER TO THE LATEST VERSION OF THE ONTARIO BUILDING CODE 2012.

- LEGEND:
- (1) EXTERIOR DOOR & WINDOW TAG (SEE SCHEDULE ON A.0.a)
 - (2) DOOR TAG (SEE SCHEDULE ON A.0.a)
 - (W1) EXTERIOR WALL TYPE (SEE A.0.a)
 - (P1) INTERIOR PARTITION WALL TYPE (SEE A.0.a)
 - (F1) FLOOR TYPE (SEE A.0.a)
 - (R1) ROOF TYPE (SEE A.0.a)
 - (P1) POST TYPE (SEE A.0.a)
 - (F1) PAD FOOTING TYPE (SEE A.0.a)
 - (WF1) WALL FOOTING TYPE (SEE A.0.a)

- LEGEND CONT:
- (S) SMOKE/CARBON DETECTOR TO O.B.C. 9.10.19

BELL + ASSOCIATES ARCHITECTURE

4184 John Street
Port Huron, ON N5A 1H7
519-279-0989

101-3108 Corp Road
London, ON N6A 1E0
513-831-9688

info@bell.ca
bellarchitects.ca

VERSION NO. **14**

11/23/23

SEAL:

NOTES:
ALL CONTRACTORS MUST COMPLY WITH ALL CODES & REGULATIONS APPLICABLE TO THE PROJECT. IT IS THE RESPONSIBILITY OF THE APPROVED CONTRACTOR TO CHECK & VERIFY ALL CONDITIONS ON THE PROJECT AS REFERRED ABOVE TO THE DEGREE AND EXTENT OF THE CONTRACT DOCUMENTS.
DO NOT SCALE DRAWINGS.
DRAWINGS MAY BE USED FOR CONSTRUCTION UNLESS NOTED AS SUCH FOR CONSTRUCTION CONTRACT PURPOSES. THIS DRAWING IS A WORKING DOCUMENT AND NOT TO BE USED FOR CONSTRUCTION CONTRACT PURPOSES. ALL WORK SHALL NOT BE USED FOR REPRODUCTION WITHOUT THE WRITTEN PERMISSION OF THE ARCHITECT.
CONTRACTOR NOTICE: CONTRACTOR IS RESPONSIBLE FOR VERIFYING ALL DIMENSIONS, MATERIALS, AND CONDITIONS ON THE PROJECT AS REFERRED ABOVE TO THE DEGREE AND EXTENT OF THE CONTRACT DOCUMENTS. USE OF THE ELECTRONIC DOCUMENT BY THE USER OVER THE USER SHALL REMAIN THE USER'S RESPONSIBILITY. THE ARCHITECT, HERETOFORER, AGENTS, CONSULTANTS, DESIGNERS, ENGINEERS, ARCHITECTS, CONTRACTORS, AND OTHERS SHALL BE RESPONSIBLE FOR VERIFYING ALL DIMENSIONS, MATERIALS, AND CONDITIONS ON THE PROJECT AS REFERRED ABOVE TO THE DEGREE AND EXTENT OF THE CONTRACT DOCUMENTS.

REVISIONS		
NO.	ITEM	DATE
11	ISSUED FOR B.P.	02/17/22
12	COORDINATION	02/21/22
13	CONSTRUCTION SET	05/8/22
14	ISSUED FOR CON. DWG.	11/23/23

PROJECT: **UGANDA HIGH COMMISSION**

CLIENT: **STITTSVILLE, ONTARIO**

DRAWING: **FRONT & RIGHT ELEVATIONS**

SCALE: 3/16" = 1'-0"

DRAWN BY: CB

DATE: AUG. 8, 2022

CHECKED BY: JB

APPROVED BY: JB

PROJECT NO.: 219-35

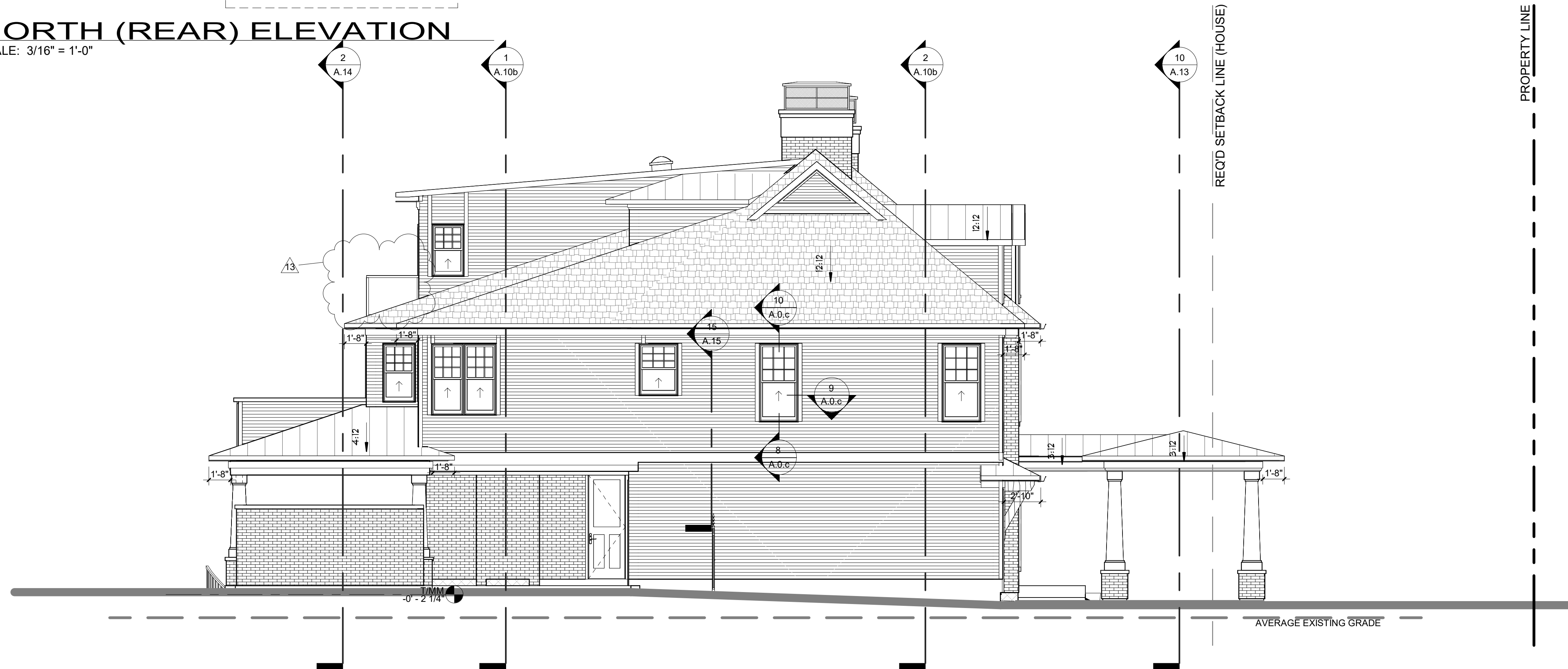
SHEET NO.: **A.8**

CONSTRUCTION SET



LEGEND
 INDICATES EXISTING WALL.

1 NORTH (REAR) ELEVATION
 SCALE: 3/16" = 1'-0"



2 WEST (LEFT) ELEVATION
 SCALE: 3/16" = 1'-0"

NOTES:
 REFER TO GENERAL NOTES FOR ALL TYPICAL CONSTRUCTION NOTES & DETAILS. WHEN DRAWINGS OR NOTES REFERENCE O.B.C. IN ALL CASES PLEASE REFER TO THE LATEST VERSION OF THE ONTARIO BUILDING CODE 2012.

- LEGEND:**
- (1) EXTERIOR DOOR & WINDOW TAG (SEE SCHEDULE ON A.0.a)
 - (2) DOOR TAG (SEE SCHEDULE ON A.0.a)
 - (WT) EXTERIOR WALL TYPE (SEE A.0.a)
 - (PI) INTERIOR PARTITION WALL TYPE (SEE A.0.a)
 - (F1) FLOOR TYPE (SEE A.0.a)
 - (R1) ROOF TYPE (SEE A.0.a)
 - (P1) POST TYPE (SEE A.0.a)
 - (F1) PAD FOOTING TYPE (SEE A.0.a)
 - (WF1) WALL FOOTING TYPE (SEE A.0.a)

- LEGEND CONT:**
- SMOKE/CARBON DETECTOR TO O.B.C. 9.10.19

BELL + ASSOCIATES ARCHITECTURE

4-184 John Street
 Toronto, ON M5A 1H7
 416-979-0989

101-3108 Corp Road
 Etobicoke, ON M9B 1E2
 416-231-9688

info@bell.ca
 bellarchitecture.ca

VERSION NO.
 14
 11/23/23

SEAL:

NOTES:
 ALL CONTRACTORS MUST COMPLY WITH ALL CODES & REGULATIONS APPLICABLE TO THE PROJECT. IT IS THE RESPONSIBILITY OF THE APPROVED CONTRACTOR TO CHECK A COPY OF ALL ORDINANCES IN THE APPLICABLE JURISDICTION BEFORE THE COMMENCEMENT OF WORK.
 CONTRACTOR NOTICE - THIS DRAWING IS THE PROPERTY OF BELL + ASSOCIATES ARCHITECTURE. IT IS NOT TO BE REPRODUCED, COPIED, OR TRANSMITTED IN ANY FORM OR BY ANY MEANS, ELECTRONIC OR MECHANICAL, INCLUDING PHOTOCOPYING, RECORDING, OR BY ANY INFORMATION STORAGE AND RETRIEVAL SYSTEM, WITHOUT THE WRITTEN PERMISSION OF BELL + ASSOCIATES ARCHITECTURE. THE USER SHALL INDEMNIFY & HOLD HARMLESS THE ARCHITECTURE FROM AND AGAINST ALL CLAIMS, DAMAGES, COSTS & EXPENSES, INCLUDING REASONABLE ATTORNEY'S FEES, ARISING FROM OR RESULTING FROM ANY REPRODUCTION OR TRANSMISSION OF THIS DRAWING IN ANY MANNER OR BY ANY MEANS, ELECTRONIC OR MECHANICAL, INCLUDING PHOTOCOPYING, RECORDING, OR BY ANY INFORMATION STORAGE AND RETRIEVAL SYSTEM, WITHOUT THE WRITTEN PERMISSION OF BELL + ASSOCIATES ARCHITECTURE.

REVISIONS		
NO.	ITEM	DATE
11	ISSUED FOR B.P.	02/17/22
12	COORDINATION	02/21/22
13	CONSTRUCTION SET	05/08/22
14	ISSUED FOR CON. DWG.	11/23/23

PROJECT
 UGANDA HIGH COMMISSION

CLIENT
 STITTVILLE, ONTARIO

DRAWING
 REAR & LEFT ELEVATIONS

SCALE
 3/16" = 1'-0"

DRAWN BY
 CB

DATE
 AUG. 8, 2022

CHECKED BY
 JB

APPROVED BY
 JB

PROJECT NO.
 219-35

SHEET NO.
 A.9

CONSTRUCTION SET