

EAST ELEVATION

1 : 200



**EXTERIOR MATERIALS LEGEND**

**MASONRY**

1.1 MASONRY  
FINISH : OFF-WHITE (COLOR CODE TBC)

1.2 EXISTING MASONRY

1.3 MASONRY  
FINISH : OFF-WHITE (COLOR CODE TBC)

**METAL CLADDING**

2.1 PRE-PAINTED ALUMINIUM PANELS  
FINISH : OFF-WHITE (COLOR CODE TBC)

2.2 PRE-PAINTED ALUMINIUM PANEL  
FINISH : CHARCOAL (COLOR CODE TBC)

2.3 PRE-PAINTED METAL FLASHING  
FINISH : OFF-WHITE (COLOR CODE TBC)

2.4 PRE-PAINTED STEEL PANEL  
FINISH : OFF-WHITE (COLOR CODE TBC)

**WINDOWS, DOORS AND CURTAIN WALLS**

4.1 WINDOWS, CURTAIN WALLS AND DOORS : PRE-PAINTED ALUMINIUM & CLEAR TEMPERED GLASS  
FINISH : OFF-WHITE (COLOR CODE TBC)

4.2 WINDOWS, CURTAIN WALLS AND DOORS : PRE-PAINTED ALUMINIUM & CLEAR TEMPERED GLASS  
FINISH : CHARCOAL (COLOR CODE TBC)

4.3 DOOR : PAINTED STEEL  
FINISH : OFF-WHITE (COLOR CODE TBC)

**RAILINGS AND SCREENS**

5.1 ANODIZED ALUMINIUM FRAME & NATURAL CLEAR GLASS  
FINISH : OFF-WHITE (COLOR CODE TBC)

5.2 ANODIZED ALUMINIUM FRAME & PATTERNED GLASS  
FINISH : OFF-WHITE (COLOR CODE TBC)

NOTES GÉNÉRALES - General Notes

1. Ces documents d'architecture sont la propriété exclusive de NEUF architect(e)s et ne pourront être utilisés, reproduits ou copiés sans autorisation écrite préalable. / These architectural documents are the exclusive property of NEUF architect(e)s and cannot be used, copied or reproduced without written pre-authorization.

2. Les dimensions apparaissant aux documents doivent être vérifiées par l'entrepreneur avant le début des travaux. / All dimensions which appear on the documents must be verified by the contractor before to start the work.

3. Veuillez aviser l'architecte de toute dimension erreur et/ou divergences entre ces documents et ceux des autres professionnels. / The architect must be notified of all errors, omissions and discrepancies between these documents and those of the others professionals.

4. Les dimensions sur ces documents doivent être lues et non mesurées. / The dimensions on these documents must be read and not measured.

STRUCTURE: Structure  
**D+M Structural inc.**  
333 Preston St. Suite 110, Ottawa, ON K1S 5H4  
T 613 651 9490

LANDSCAPE ARCHITECT: Architecture de Paysage  
**Fotenn Planning + Design**  
396 Cooper St Suite 300, Ottawa, ON K2P 2H7  
T 613 735 5709

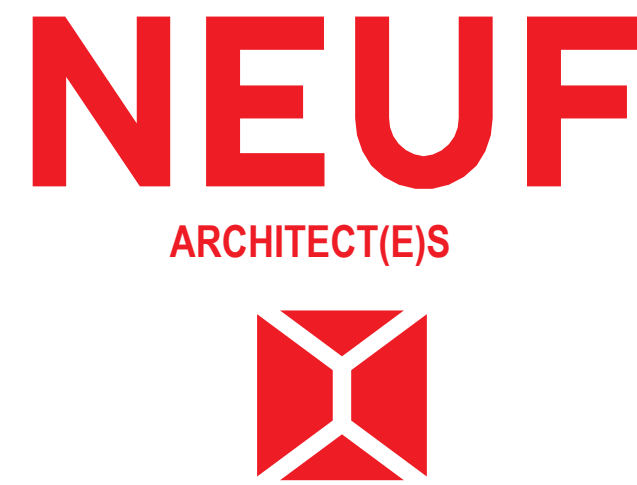
CIVIL: Civil  
**EXP**  
2650 Queenview Dr Suite 100  
T 613 588 1659

MECHANICAL/ELECTRICAL: Mécanique/Électrique  
**Jain Sustainability Consultants**  
7455 Carleton Place, Carleton Place, Ontario, Canada  
T 905 285 9900

URBAN PLANNER: Urbaniste  
**Fotenn Planning + Design**  
396 Cooper St Suite 300, Ottawa, ON K2P 2H7  
T 613 735 5709

ARCHITECT: Architectes  
**NEUF architect(e)s**  
630, boul. René-Lévesque O. 2<sup>e</sup> étage, Montréal QC H2B 1S6  
T 514 947 1117 NEUFarchitectes.com

SCEAU / Seal



CLIENT: Client



OUVRAGE: Project  
**211-231 BANK**

EMPLACEMENT: Location  
211-231 BANK STREET,  
OTTAWA

NO PROJET No. 13369

NO	RÉVISION	DATE (aaaa mm jj)
1	SPC	2024.09.26

DESSINÉ PAR: Drawn by S.W.  
DATE (aaaa mm jj): 2024.09.26  
TITRE DU DESSIN: Drawing Title

VERIFIÉ PAR: Checked by M.M., H.G.  
ÉCHELLE: Scale As indicated

**NORTH & EAST ELEVATIONS**

REVISION: Revision  
NO. DESSIN: Drawing Number

**1 SPC-07**



NORTH ELEVATION

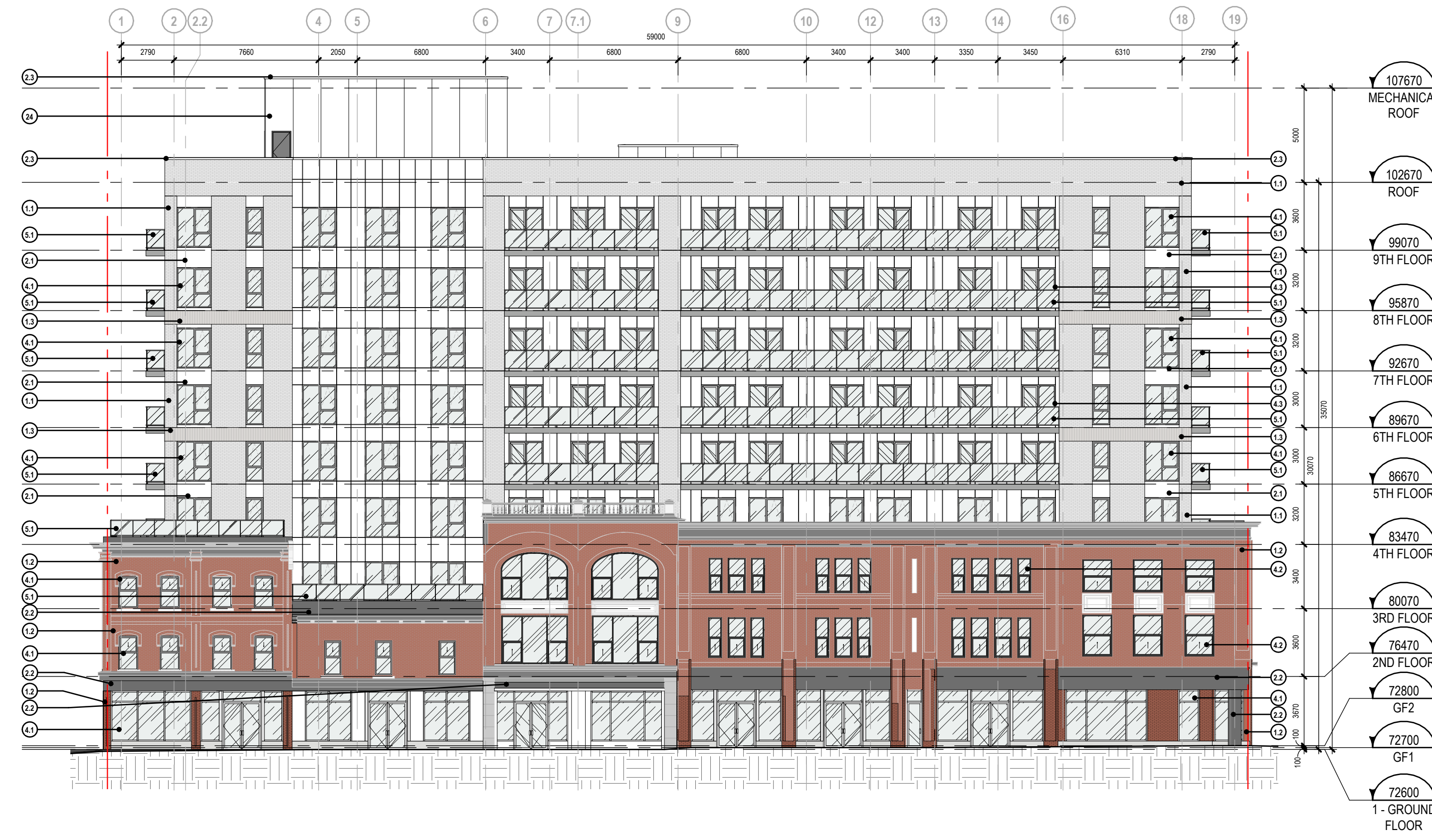
1 : 200



FILE NUMBERS: D02-02-22-0127  
D07-12-22-0188

PLAN NUMBER: 18910





**EXTERIOR MATERIALS LEGEND**

**MASONRY**

(1.1) MASONRY  
FINISH : OFF-WHITE (COLOR CODE TBC)

(1.2) EXISTING MASONRY

(1.3) MASONRY  
FINISH : OFF-WHITE (COLOR CODE TBC)

**METAL CLADDING**

(2.1) PRE-PAINTED ALUMINIUM PANELS  
FINISH : OFF-WHITE (COLOR CODE TBC)

(2.2) PRE-PAINTED ALUMINIUM PANEL  
FINISH : CHARCOAL (COLOR CODE TBC)

(2.3) PRE-PAINTED METAL FLASHING  
FINISH : OFF-WHITE (COLOR CODE TBC)

(2.4) PRE-PAINTED STEEL PANEL  
FINISH : OFF-WHITE (COLOR CODE TBC)

**WINDOWS, DOORS AND CURTAIN WALLS**

(4.1) WINDOWS, CURTAIN WALLS AND DOORS : PRE-PAINTED ALUMINIUM & CLEAR TEMPERED GLASS  
FINISH : OFF-WHITE (COLOR CODE TBC)

(4.2) WINDOWS, CURTAIN WALLS AND DOORS : PRE-PAINTED ALUMINIUM & CLEAR TEMPERED GLASS  
FINISH : CHARCOAL (COLOR CODE TBC)

(4.3) DOOR : PAINTED STEEL  
FINISH : OFF-WHITE (COLOR CODE TBC)

**RAILINGS AND SCREENS**

(5.1) ANODIZED ALUMINIUM FRAME & NATURAL CLEAR GLASS  
FINISH : OFF-WHITE (COLOR CODE TBC)

(5.2) ANODIZED ALUMINIUM FRAME & PATTERNED GLASS  
FINISH : OFF-WHITE (COLOR CODE TBC)

**NOTES GÉNÉRALES - General Notes**

1. Ces documents d'architecture sont la propriété exclusive de NEUF architect(e)s et ne pourront être utilisés, reproduits ou copiés sans autorisation écrite préalable. / These architectural documents are the exclusive property of NEUF architect(e)s and cannot be used, copied or reproduced without written pre-authorization.

2. Les dimensions apparaissant aux documents doivent être vérifiées par l'entrepreneur avant le début des travaux. / All dimensions which appear on the documents must be verified by the contractor before to start the work.

3. Veuillez aviser l'architecte de toute dimension erreur ou divergence entre ces documents et ceux des autres professionnels. / The architect must be notified of all errors, omissions and discrepancies between these documents and those of the others professionals.

4. Les dimensions sur ces documents doivent être lues et non mesurées. / The dimensions on these documents must be read and not measured.

**STRUCTURE: Structure**  
**D+M Structural inc.**  
 333 Preston St. Suite 110, Ottawa, ON K1P 2H7  
 T 613 651 9490

**LANDSCAPE ARCHITECT: Architecture de Paysage**  
**Fotenn Planning + Design**  
 396 Cooper St Suite 300, Ottawa, ON K2P 2H7  
 T 613 730 5709

**CIVIL: Civil**  
**EXP**  
 2650 Queenview Dr Suite 100  
 T 613 688 1659

**MECHANICAL/ELECTRICAL: Mécanique/Électrique**  
**Jain Sustainability Consultants**  
 7455 Carleton Place, Carleton Place, Ontario, L3N 9P9  
 T 905 285 9900

**URBAN PLANNER: Urbaniste**  
**Fotenn Planning + Design**  
 396 Cooper St Suite 300, Ottawa, ON K2P 2H7  
 T 613 730 5709

**ARCHITECT: Architectes**  
**NEUF architect(e)s**  
 630, boul. René-Lévesque O. 2<sup>e</sup> étage, Montréal QC H2B 1S6  
 T 514 847 1117 NEUFarchitectes.com

**SCEAU / Seal**

**WEST ELEVATION**  
 1:200  
 5m 20m



**SOUTH ELEVATION**  
 1:200  
 5m 20m

**FILE NUMBERS:** D02-02-22-0127  
 D07-12-22-0188  
**PLAN NUMBER:** 18910



**OUVRAGE: Project**  
**211-231 BANK**

**EMPLACEMENT: Location** NO PROJET No. 13369  
 211-231 BANK STREET, OTTAWA

NO	REVISION	DATE (aaaa mm jj)
1	SPC	2024.09.26

**DESSINÉ PAR: Drawn by** S.W. **VERIFIÉ PAR: Checked by** M.M., H.G.  
**DATE: (aaaa mm jj)** 2024.09.26 **ECHELLE: Scale** As  
**TITRE DU DESSIN: Drawing Title** indicated

**SOUTH & WEST ELEVATIONS**