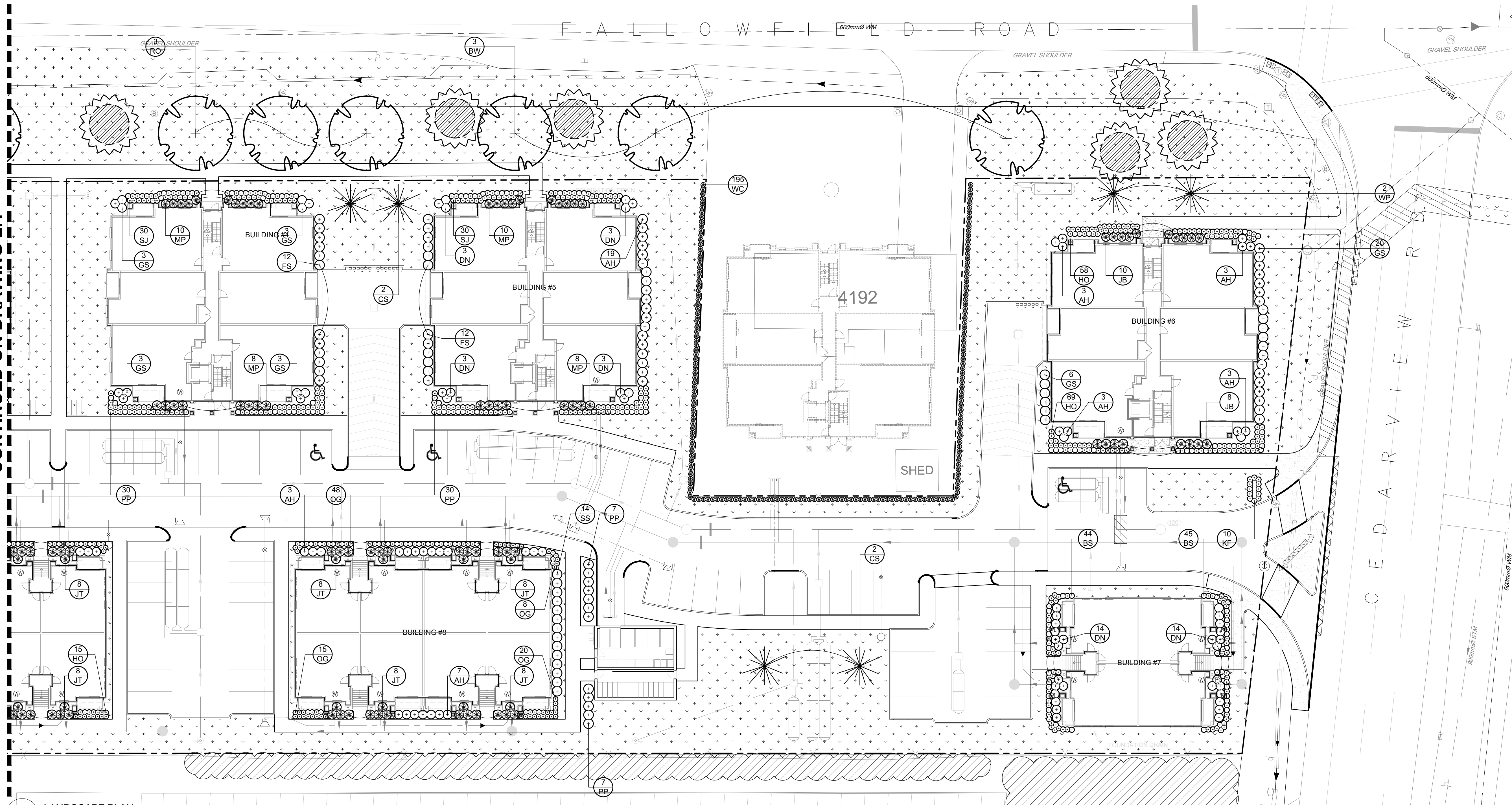
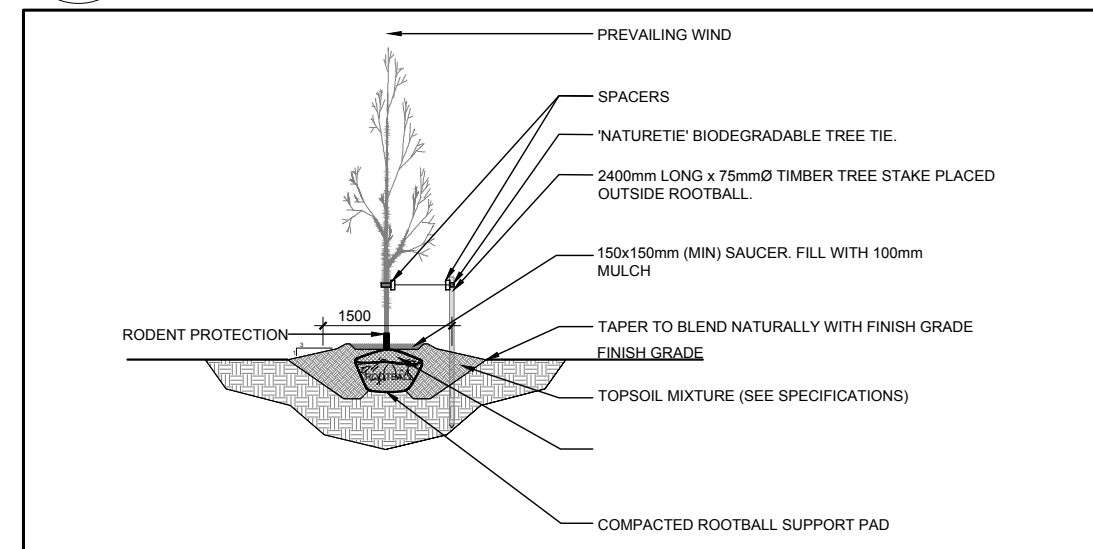


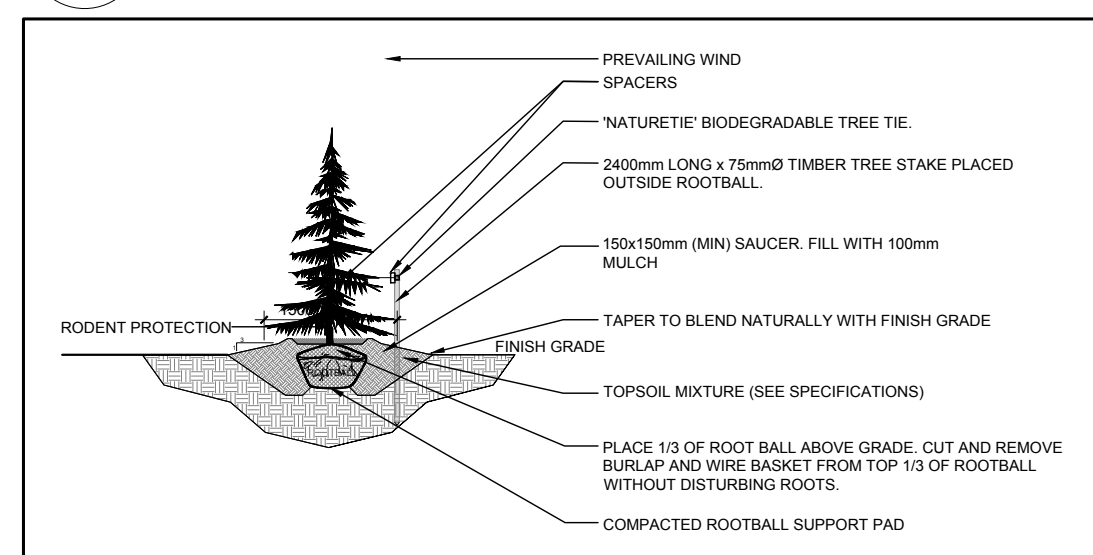
CONTINUED ON DRAWING L.1



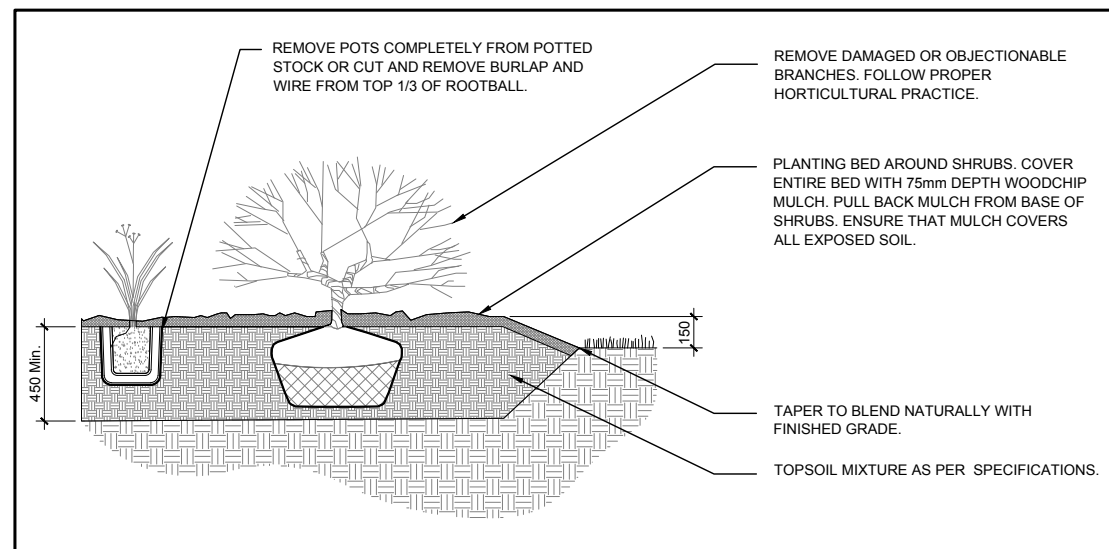
1 LANDSCAPE PLAN
SCALE 1:250



2 DECIDUOUS TREE PLANTING
SCALE : NTS



3 CONIFEROUS TREE PLANTING
SCALE : NTS



4 SHRUB / PERENNIAL / ORNAMENTAL GRASS PLANTING
SCALE : NTS

GENERAL NOTES:

- It is the responsibility of the appropriate contractor or official to report any errors, omissions or discrepancies on this plan with actual site conditions to the Landscape Architect before proceeding with construction.
- The contractor is to notify all utility companies and authorities prior to any excavation and ascertain locations of underground services.
- The contractor is to reinstate all areas and items damaged as a result of construction activity.
- The contractor is to comply with all pertinent codes and by-laws.
- The contractor is to maintain a positive surface run-off throughout the entire construction period.
- The Landscape Architect is not responsible for subsurface conditions.
- The contractor is to identify all existing trees to remain on site with the Landscape Architect prior to construction.
- The contractor is to stake the proposed location of all plant material in conjunction with the Landscape Architect prior to excavation.
- Minimum distances for selected deciduous trees are as follows:
 - Building Foundations 7.5m
 - Sidewalks 1.5m
 - Public Streets 2.5m
 - Underground Infrastructure 2.0m
- All trees within 1m of underground utility trenches are to be excavated by hand.
- Remove all protective wrapping from tree trunks after installation.
- Staking of trees shall only be performed if necessary.
- Ensure that mulch is pulled back a min. distance of 75mm from base of tree trunk.

PROPOSED PLANT LIST

KEY	QTY.	BOTANICAL NAME	COMMON NAME	SIZE	CONDITION	REMARKS
TREES						
BW	3	Tilia americana	Basswood	60mm cal.	B&B	
CS	4	Picea pungens 'Pyramidalis'	Columnar Colorado Spruce	1800mm ht.	B&B	
RO	3	Quercus rubra	Red Oak	60mm cal.	B&B	
WP	2	Pinus strobus	White Pine	1800mm ht.	B&B	
SHRUBS						
AH	41	Hydrangea arborescens 'Annabelle'	Annabelle Hydrangea	1 gallon pot	Potted	1000mm o.c.
DN	40	Physocarpus opulifolius 'Little Devil'	Little Devil Ninebark	600mm ht.	Potted	1000mm o.c.
FS	24	Rhus aromatica 'Gro-Low'	Gro Low Fragrant Sumac	600mm ht.	Potted	1000mm o.c.
GS	38	Spiraea x arguta	Garland Spiraea	600mm ht.	Potted	1000mm o.c.
JB	18	Juniperus sabina 'Blue Danube'	Blue Danube Juniper	600mm spr.	Potted	1000mm o.c.
JT	56	Juniperus sabina 'Tamariscifolia'	Tamarix Juniper	600mm spr.	Potted	1000mm o.c.
MP	36	Pinus mugo 'Pumilio'	Dwarf Mugo Pine	600mm spr.	Potted	1000mm o.c.
PP	74	Spiraea japonica 'Little Princess'	Little Princess Spiraea	600mm ht.	Potted	1000mm o.c.
SJ	60	Hypericum kalmianum 'Ames'	Ames St. John's Wort	600mm ht.	Potted	1000mm o.c.
SS	14	Sorbaria sorbifolia 'Sem'	Sem False Spiraea	600mm ht.	Potted	1000mm o.c.
WC	195	Thuja occidentalis 'Clumps'	White Cedar Clumps	1200mm ht.	Bare Root	500mm o.c.
PERENNIALS						
KF	10	Calamagrostis 'Karl Forester'	Karl Forester Grass	250mm pot	Potted	1000 mm o.c.
OG	91	Helictotrichon sempervirens	Blue Oatgrass	250mm pot	Potted	800 mm o.c.

CLIENT:



CONSULTANTS

ARCHITECTS:



CIVIL ENGINEERS:



LEGEND

- EXISTING TREE TO REMAIN (SEE TREE CONSERVATION REPORT FOR DETAILS)
- TREE PROTECTION FENCE (SEE DETAIL 2/TCR FOR DETAILS)
- PROPOSED SOD
- PROPOSED DECIDUOUS TREE
- PROPOSED CONIFEROUS TREE
- PROPOSED SHRUBS / PERENNIALS / ORNAMENTAL GRASSES

3	REVISED AS PER NEW SITE PLAN	03/17/2020	ML	JL
2	REVISED AS PER CITY COMMENTS	09/06/2019	LC	JL
1	ISSUED FOR SITE PLAN SUBMISSION	07/28/2019	ML	JL
No.	Issue	Date	ML	DR

JAMES B. LENNOX & ASSOCIATES INC.
LANDSCAPE ARCHITECTS
3332 CARLING AVE. OTTAWA, ONTARIO K2H 5A8
Tel: (613) 722-5168 Fax: (866) 343-3942

PROJECT

4190 TO 4236 FALLOWFIELD, OTTAWA ON

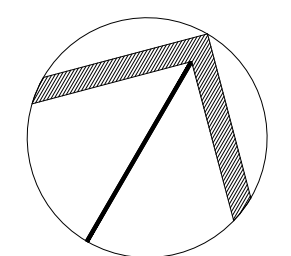
DRAWING

LANDSCAPE PLAN

STAMP



PROJECT NORTH



SCALE

AS SHOWN

START DATE

APRIL 2018

PROJECT NO.

18-DCR-1830

DRAWING NO.

L.2

PLOT SIZE ARCH-D