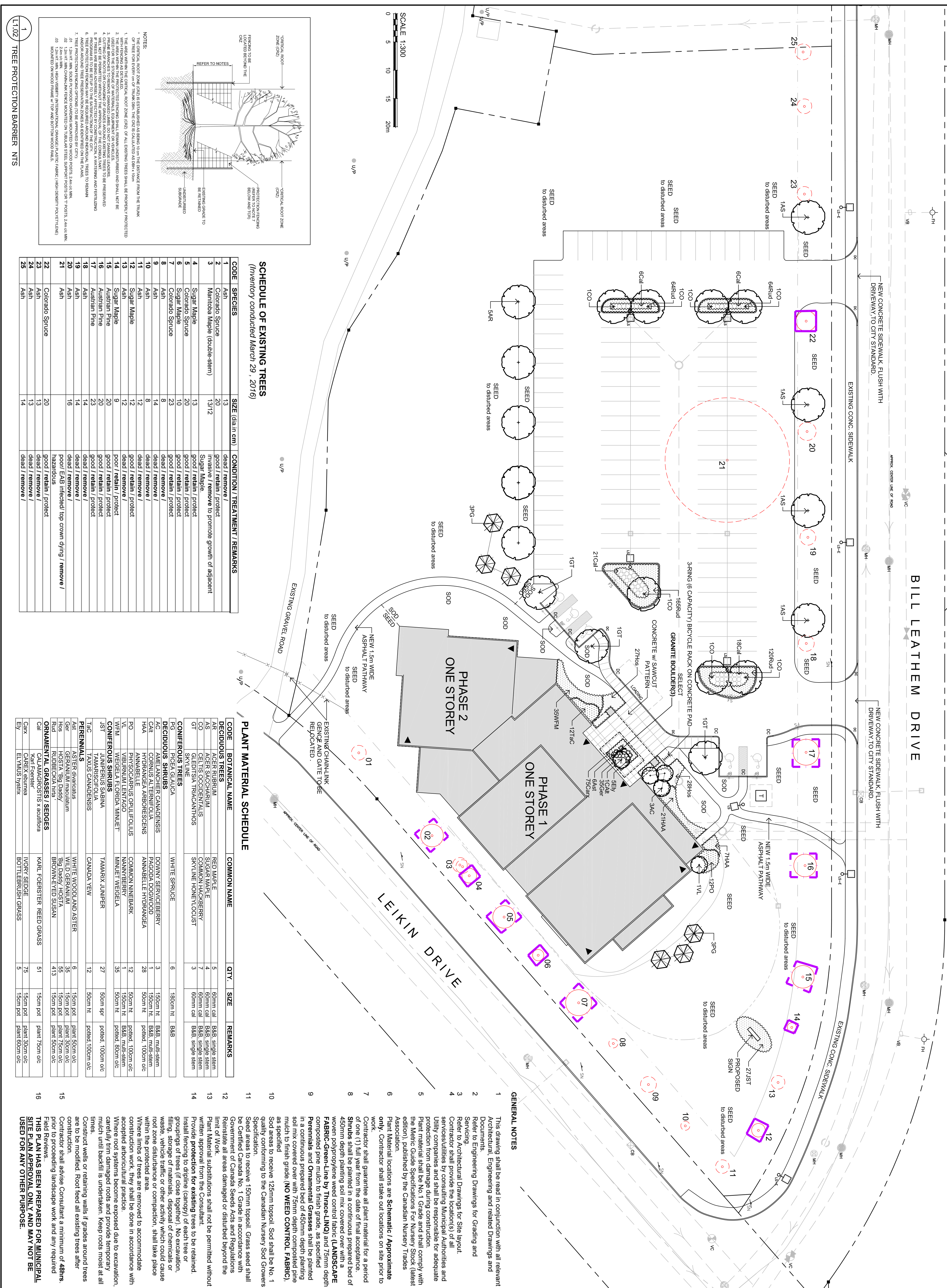
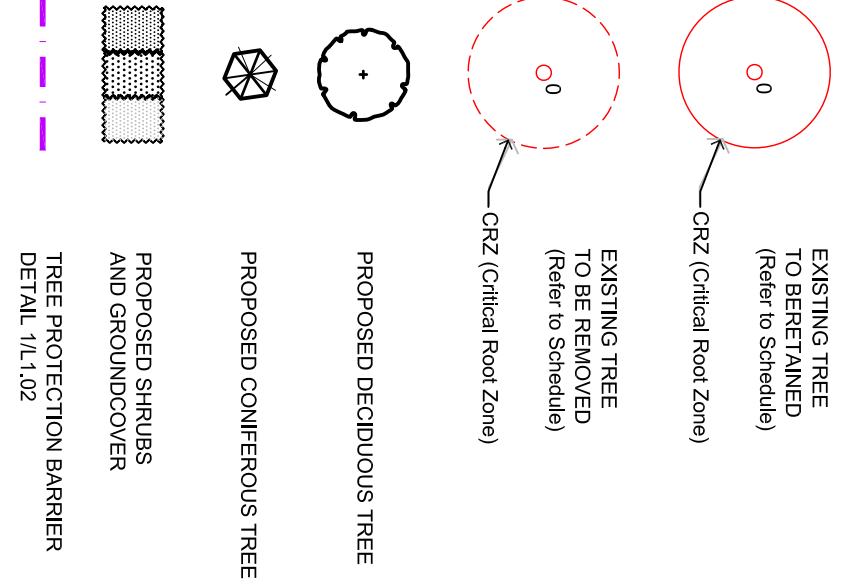


LEGEND / SYMBOL



SCHEDULE OF EXISTING TREES
(Inventory conducted March 29, 2016)

CODE	SPECIES	SIZE (dia in cm)	CONDITION / TREATMENT / REMARKS
1	Ash	13	dead / remove /
2	Colorado Spruce	20	good / retain / protect
3	Manitoba Maple (double-stem)	13/12	invasive / remove to promote growth of adjacent
4	Sugar Maple	13	good / retain / protect
5	Colorado Spruce	20	good / retain / protect
6	Sugar Maple	10	good / retain / protect
7	Colorado Spruce	23	good / retain / protect
8	Ash	8	dead / remove /
9	Ash	14	dead / remove /
10	Ash	8	dead / remove /
11	Ash	12	dead / remove /
12	Sugar Maple	12	good / retain / protect
13	Ash	8	dead / remove /
14	Sugar Maple	9	good / retain / protect
15	Austrian Pine	20	good / retain / protect
16	Austrian Pine	23	good / retain / protect
17	Austrian Pine	23	good / retain / protect
18	Ash	14	dead / remove /
19	Ash	14	dead / remove /
20	Ash	16	dead / EMB infected / top crown dying / remove / hazardous
21	Ash	16	dead / remove /
22	Colorado Spruce	20	good / retain / protect
23	Ash	13	dead / remove /
24	Ash	13	dead / remove /
25	Ash	14	dead / remove /

PLANT MATERIAL SCHEDULE

CODE	BOTANICAL NAME	COMMON NAME	QTY.	SIZE	REMARKS
DECIDUOUS TREES					
AR	ACER RUBRUM	RED MAPLE	5	60mm cal	B&B, single stem
AS	ACER SACCHARUM	SUGAR MAPLE	4	60mm cal	B&B, single stem
FR	FICUS CAROLINENSIS	AMERICAN BEECH	2	60mm cal	B&B, single stem
GT	GLEDITSIA TRIACANTHOS	SKYLINE HONEYLOCUST	3	60mm cal	B&B, single stem
CONIFEROUS TREES					
PG	PICEA GLAUCA	WHITE SPRUCE	6	180mm ht	B&B
DECIDUOUS SHRUBS					
AG	AMELANCHIER CANADENSIS	DOVY SEVICEBERRY	3	150cm ht	B&B, multi-stem
CAN	CORNUS ALTERNIFOLIA	PAGODA DOGWOOD	3	150cm ht	B&B, multi-stem
TKA	TAXUS CANADENSIS	ANNABELLE HYDRANGEA	28	50cm ht	poiled, 100cm dc
PO	PHYSCARPUS OPULIFOLIUS	COMMON NINEBARK	12	50cm ht	poiled, 100cm dc
VLM	VIBURNUM LENTAGO	NANNYBERRY	1	150cm ht	B&B, multi-stem
WFM	WEIGELA FLORIDA MINUET	MINUET WEIGELA	35	50cm ht	poiled, 80cm dc
CONIFEROUS SHRUBS					
JST	JUNIPERUS SPARNA	TAMARIX JUNPER	27	50cm spr	poiled, 100cm dc
TAX	TAXUS CANADENSIS	CANADA YEW	12	50cm ht	poiled, 100cm dc
PERENNIALS					
AST	ASTER divaricatus	WHITE WOODLAND ASTER	6	15cm pot	plant 50cm dc
GER	GERANIUM maculatum	WILD GERANIUM	35	15cm pot	plant 50cm dc
HOS	HOSTA 'Big Daddy'	Big Daddy HOSTA	55	15cm pot	plant 75cm dc
RUD	RUDEBECKIA hirta	BROOM-EYED SUSAN	413	15cm pot	plant 50cm dc
ORNAMENTAL GRASSES / SEDGES					
CAI	Calif Foxtail	KARL FOESTER REED GRASS	51	15cm pot	plant 75cm dc
CAREX	CAREX elatior	IVORY SEDGE	75	15cm pot	plant 50cm dc
Ely	Elymus invarix	BOTTLEBRUSH GRASS	5	15cm pot	plant 50cm dc

GENERAL NOTES

1 This drawing shall be read in conjunction with all relevant Architectural, Engineering and related Drawings and Documents.

2 Refer to Engineering Drawings for Grading and Servicing.

3 Refer to Architectural Drawings for Site layout.

4 Refer to the Schedule of Existing Trees for tree identification and removal.

5 Plant material shall be No. 1 Grade and shall comply with the Metric Guide Specifications For Nursery Stock (latest edition), published by the Canadian Nursery Trades Association.

6 Plant material locations are Schematic / Approximate only. Contractor shall stake out locations on site prior to work.

7 Contractor shall guarantee all plant material for a period of one (1) full year from the date of final acceptance.

8 Shrubs shall be planted in a continuous prepared bed of 450mm depth planting soil mix covered over with a woven polypropylene weed control fabric (LANDSCAPE FABRIC Green-Line by Thrac-LINO) and 75mm depth Perennials and Ornamental Grasses shall be planted in a continuous prepared bed of 450mm depth planting soil mix covered over with 75mm depth composted pine mulch to finish grade. (NO WEED CONTROL FABRIC), as specified.

9 Sod areas to receive 125mm topsoil. Sod shall be No. 1 quality conforming to the Canadian Nursery Sod Growers Specification.

10 Seed areas to receive 150mm topsoil. Grass seed shall be Certified Canada No. 1 Grade in accordance with Government of Canada Seeds Act and Regulations.

11 Reinstatement of areas damaged or disturbed beyond the Plant Material Substitutions shall not be permitted without written approval from the Consultant.

12 Provide protection for existing trees to be retained. Install fencing to drip-line (canopy) of each tree or groupings of trees (if close together). No excavation, filling, storage of materials, disposal of chemicals or waste, vehicle traffic or other activity which could cause root zone disturbance or compaction, shall take place within the protected area.

13 Where limbs of trees are removed to accommodate construction work, they shall be done in accordance with accepted arboricultural practice.

14 Where root systems become exposed due to excavation, carefully trim damaged roots and provide temporary mulch until backfill is undertaken. Keep roots moist at all times.

15 Construct wells or retaining walls if grades around trees are to be modified. Root feed all existing trees after construction.

16 Contractor shall advise Consultant a minimum of 48hrs prior to proceeding landscape work and any required Field Reviews.

17 THIS PLAN HAS BEEN PREPARED FOR MUNICIPAL SITE PLAN APPROVAL ONLY. LAND MAY NOT BE USED FOR ANY OTHER PURPOSE.

LEVSTEK CONSULTANTS
A. N. D. S. C. A. R. E. R. S. K. R. C. H. I. T. E. R. S.
1971 HEBB CRENSHAW OLIVER CORPORA - K5A 2W8

ASSOCIATION OF LANDSCAPE ARCHITECTS
CMAA

Contractor shall stake out and verify all dimensions on site and report all errors and/or omissions to the Consultant.

Work to be done in accordance with all applicable codes and by-laws.

Do not scale Drawing.

Copyright reserved. This Drawing is the exclusive property of Levstek Consultants Inc. and shall not be used without consent.

Project: **SALVATION ARMY CHURCH BARHAVEN 102 BILL LEATHERM DRIVE**

Drawing Title: **LANDSCAPE PLAN PHASE 2**

Client: **MGB**

Date: **MAR 2016**

Scale: **1:300**

Drawing No.: **L1.02**

Project No.: **1114**