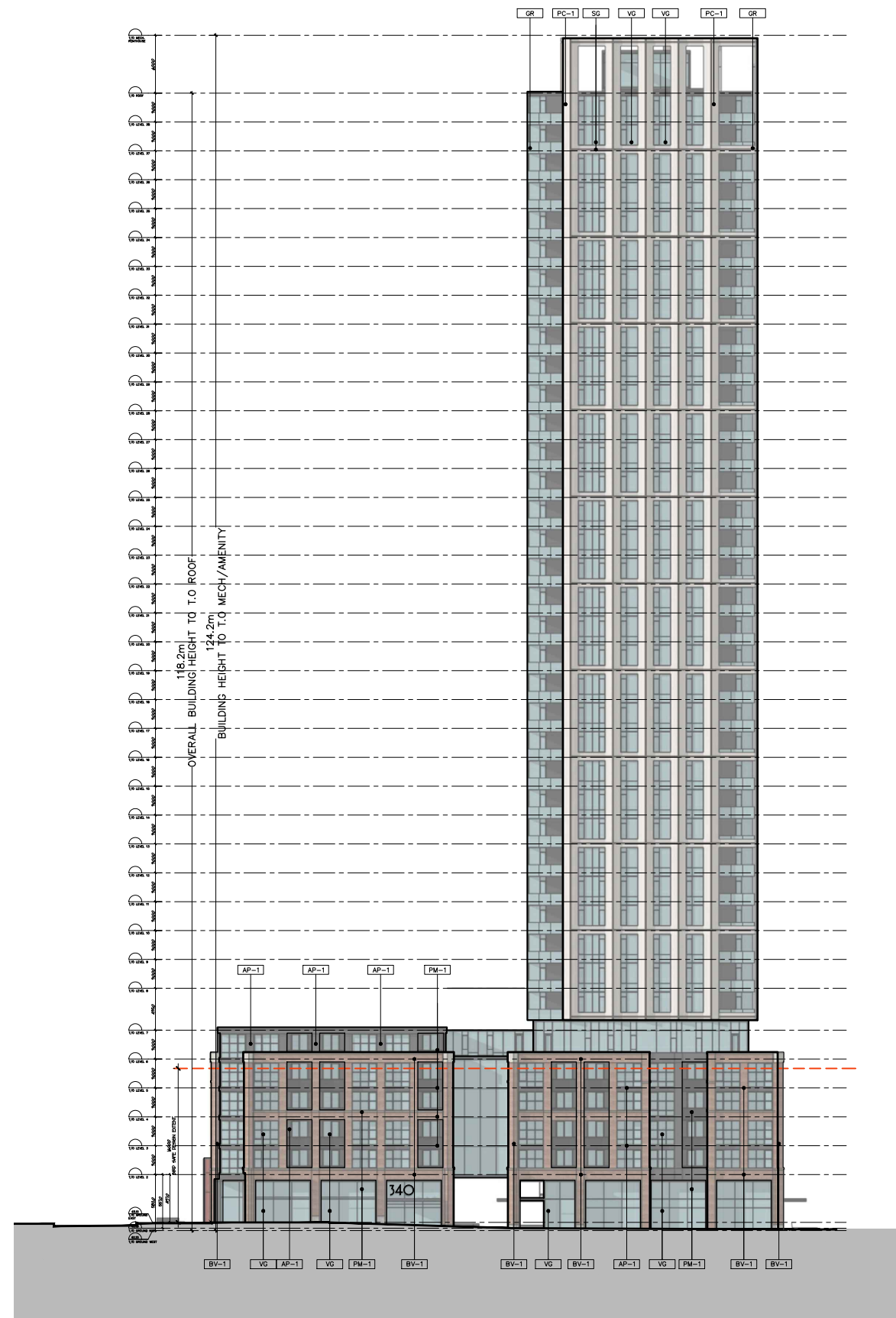


SOUTH ELEVATION

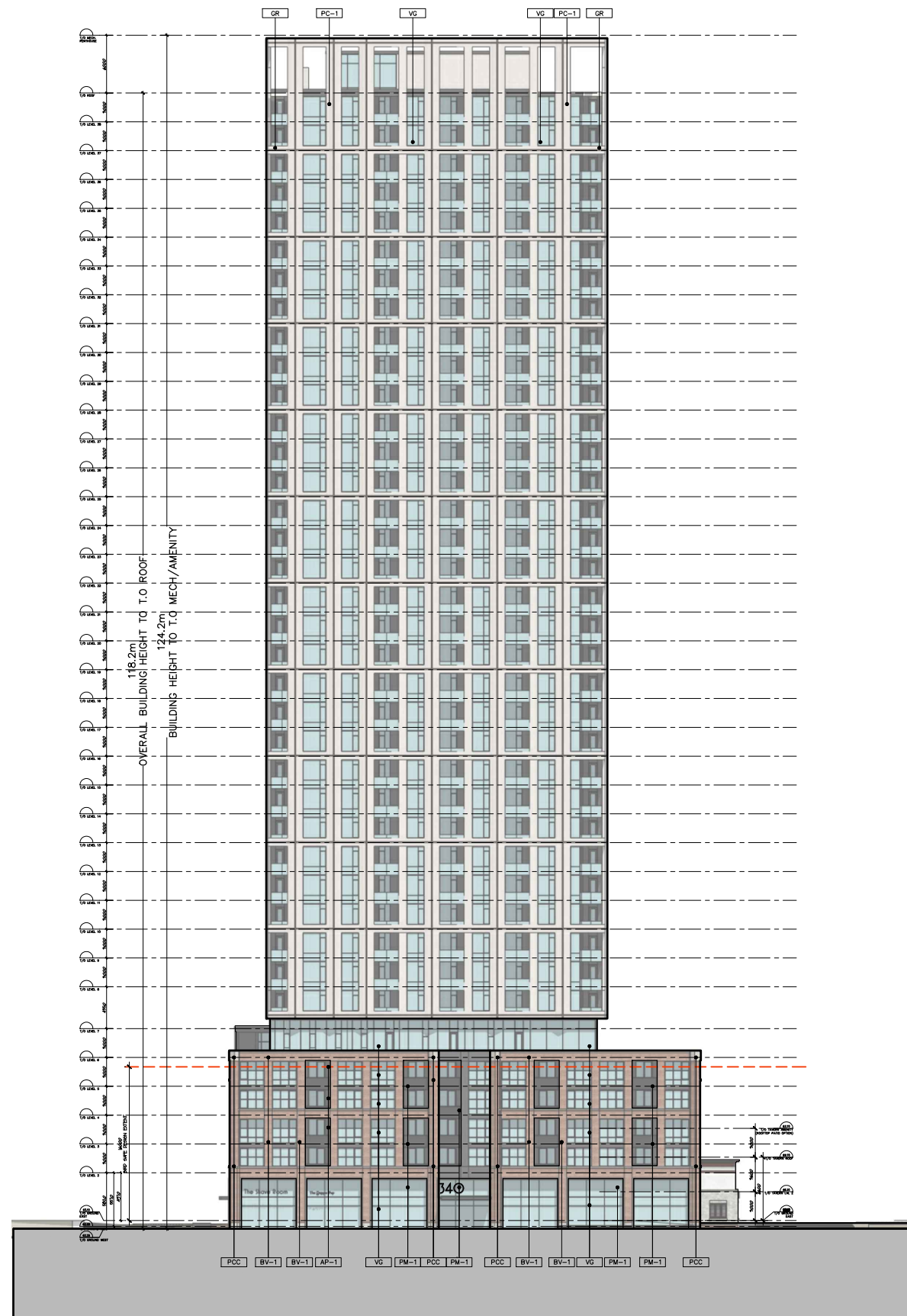


NORTH ELEVATION

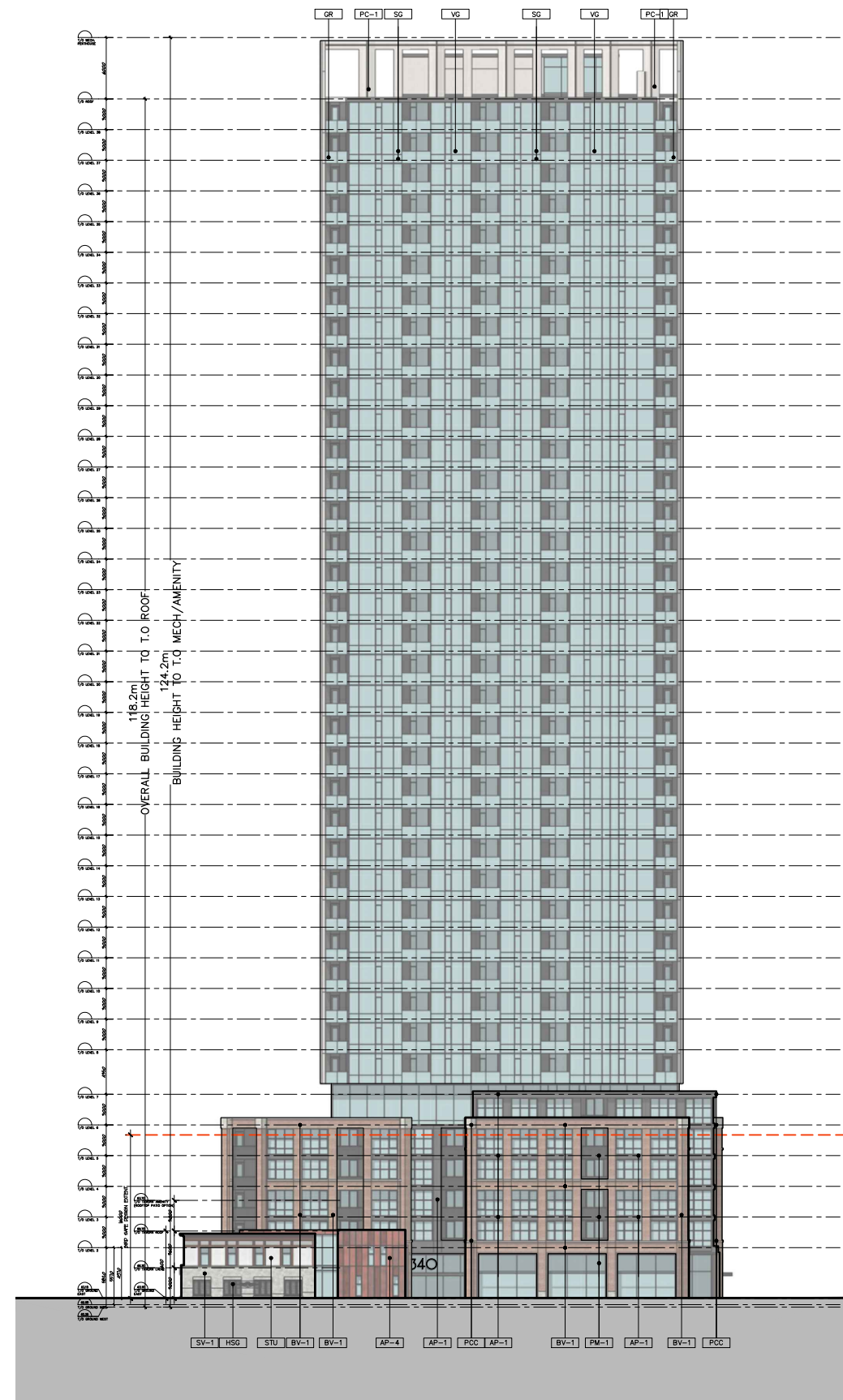
BIRD FRIENDLY GLASS – AS PER CITY
 BIRD SAFE GUIDELINES GUIDELINE 2 –
 Treatments to be applied to a
 minimum of 90% of the glass within
 the first 16m of height

1. GLASS SPECIFIED TO BE LOW
 REFLECTIVITY ON LEVEL 1–5

- AP-1 ALUMINUM PANEL – CHARCOAL
- AP-2 ALUMINUM PANEL – BRASS
- AP-3 ALUMINUM PANEL – WHITE
- AP-4 ALUMINUM PANEL – RUST
- BV-1 BRICK VENEER 1
- HSG HISTORICAL STAINED GLASS
- PC-1 PRECAST PANEL – TEXTURED
- PM-1 PERFORATED METAL
- SG SPANDREL GLASS
- STU STUCCO HERITAGE TAVERN
- STU-2 STUCCO LIGHT GREY
- SV-1 STONE VENEER 1
- VG VISION GLASS



WEST ELEVATION



EAST ELEVATION

BIRD FRIENDLY GLASS – AS PER CITY
BIRD SAFE GUIDELINES GUIDELINE 2 –
Treatments to be applied to a
minimum of 90% of the glass within
the first 16m of height

1. GLASS SPECIFIED TO BE LOW
REFLECTIVITY ON LEVEL 1–5

- AP-1 ALUMINUM PANEL – CHARCOAL
- AP-2 ALUMINUM PANEL – BRASS
- AP-3 ALUMINUM PANEL – WHITE
- AP-4 ALUMINUM PANEL – RUST
- BV-1 BRICK VENEER 1
- HSG HISTORICAL STAINED GLASS
- PC-1 PRECAST PANEL – TEXTURED
- PM-1 PERFORATED METAL
- SG SPANDREL GLASS
- STU STUCCO HERITAGE TAVERN
- STU-2 STUCCO LIGHT GREY
- SV-1 STONE VENEER 1
- VG VISION GLASS