

NOTES:

- DO NOT SCALE DRAWINGS;
- NOTES ARE APPLICABLE TO ALL DRAWINGS IN THE SET;
- Fotenn Consultants Inc. IS NOT RESPONSIBLE FOR ACCURACY OF BASE INFORMATION;
- REFER TO CIVIL ENGINEERING DRAWINGS FOR GRADING & SITE SERVICING INFORMATION;
- THE CONTRACTOR IS RESPONSIBLE FOR CONFIRMING SITE CONDITIONS AND REPORTING ANY DISCREPANCIES TO THE LANDSCAPE ARCHITECT;
- THE CONTRACTOR IS RESPONSIBLE FOR CONFIRMING EXACT LOCATIONS OF ALL UNDERGROUND SERVICES AND OBTAINING CLEARANCE FROM ALL APPLICABLE UTILITIES. PROPOSED WORKS FOUND TO BE IN CONFLICT WITH UNDERGROUND SERVICES MAY BE ADJUSTED AT THE DIRECTION OF THE LANDSCAPE ARCHITECT;
- LANDSCAPE ELEMENTS SHOWN ARE SUBJECT TO THE FINAL LOCATION OF UNDERGROUND SERVICES AND UTILITIES;
- DO NOT INSTALL TREES ON PROPERTY / LOT LINES OR WITHIN DRAINAGE EASEMENTS;
- PERFORM WORK IN ACCORDANCE WITH DETAILS AND SPECIFICATIONS;
- ALL PLANT MATERIAL SHALL BE No. 1 NURSERY STOCK AND SHALL MEET OR EXCEED THE SPECIFICATION OF THE Canadian Standards for Nursery Stock, AS PUBLISHED BY THE Canadian Nursery Landscape Association;
- SPECIES SUBSTITUTIONS ARE NOT PERMITTED WITHOUT PRIOR WRITTEN APPROVAL OF THE LANDSCAPE ARCHITECT;
- ALL UN-PAVED SURFACES TO RECEIVE 150mm DEPTH TOPSOIL & SOD.

STANDARDS FOR TREE PLANTING:

- NO PLANTING ON CORNERS OR ANYWHERE WHERE IT WOULD CREATE A SIGHT LINE CONCERN;
- MAINTAIN A MINIMUM DISTANCE OF 7.5m FROM ALL BUILDINGS;
- MAINTAIN A MINIMUM DISTANCE OF 2.5m FROM THE CURB FOR DECIDUOUS TREES AND 4.5m FOR CONIFEROUS TREES;
- MAINTAIN A MINIMUM DISTANCE OF 1.5m FOR DECIDUOUS (4.5m FOR CONIFERS) FROM ANY SIDEWALK OR PRIVATE WALKWAY;
- MAINTAIN A MINIMUM DISTANCE OF 1.2m FROM ALL DRIVEWAYS;
- MAINTAIN A MINIMUM DISTANCE OF 2.5m FROM COMMUNITY MAILBOXES, LIGHT STANDARDS, FIRE HYDRANTS AND NO PLANTING IN FRONT OF HYDRANTS;
- MAINTAIN A MINIMUM DISTANCE OF 3.0m FROM ALL HYDRO TRANSFORMERS;
- MAINTAIN A MINIMUM DISTANCE OF 1.0m FROM ALL UNDERGROUND SERVICES;
- MAINTAIN A MINIMUM DISTANCE OF 1.0m FROM ALL BELL AND CABLE BOXES;
- MAINTAIN A MINIMUM DISTANCE OF 10.0 FROM BUS SHELTERS

IMPORTANT NOTICE FOR CONTRACTOR:

THE CITY OF OTTAWA REQUIRES A Certificate of Completion (F1) Landscape Works TO BE SUBMITTED AND SEALED BY THE LANDSCAPE ARCHITECT. CONTRACTORS ARE RESPONSIBLE FOR FAMILIARIZING THEMSELVES WITH THE REQUIREMENTS OF THIS PROCESS AND PROVIDING SUFFICIENT NOTICE TO THE LANDSCAPE ARCHITECT TO CONDUCT SITE REVIEWS **DURING INSTALLATION** OF TREES. THE 1 YEAR WARRANTY PERIOD SHALL NOT COMMENCE UNTIL THE LANDSCAPE ARCHITECT HAS SUBMITTED THE F1 Certificate.

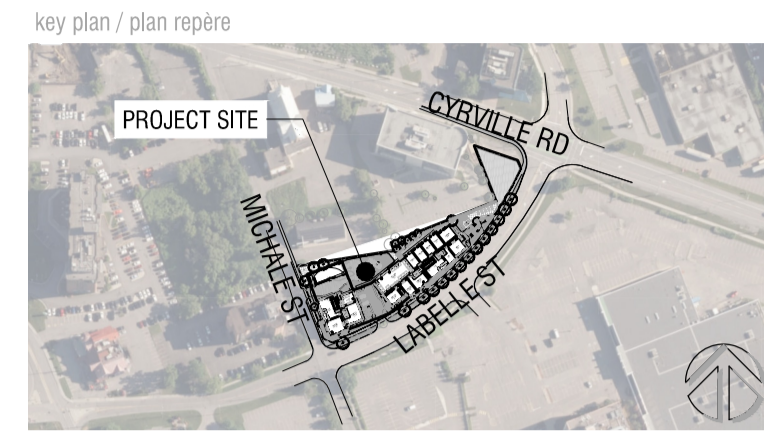
PRIOR TO INSTALLATION OF TREES, THE DEVELOPER WILL CONTACT THE PLANNING AND GROWTH MANAGEMENT AND FORESTRY SERVICES TO REVIEW THE SPECIES AND LOCATION OF TREES.

Copyright Reserved
The Copyrights to all designs and drawings are the property of Fotenn Consultants Inc. Unauthorized reproduction or use is forbidden. **DO NOT SCALE DRAWING**

Copyright réservés
Les droits (auteur à tous les modèles et dessins sont la propriété de Fotenn Consultants Inc. Reproduction ou utilisation non autorisée est interdite. **NE PAS L'ÉCHELLE DE DESSIN**

Client / Client

INSIDE EDGE PROPERTIES



Legend / légende

- PROPERTY LINE
- EXISTING TREES (RETENTION TO BE DETERMINED BY ARBORIST)
- DECIDUOUS TREES (SEE PLANTING NOTES & SCHEDULE FOR SPECIES AND QUANTITIES)
- CONIFEROUS TREES (SEE PLANTING SCHEDULE FOR SPECIES AND QUANTITIES)
- 1.8m HIGH PRIVACY FENCE
- 1.2m HIGH ORNAMENTAL FENCE
- PAVING TYPE 1 - ASPHALT
- PAVING TYPE 2 - CONCRETE
- PAVING TYPE 3 - UNIT PAVERS
- COLOURED BANDING OF UNIT PAVERS
- RIVERWASH STONE
- PLANTING AREA & POTENTIAL FOR STORMWATER INFILTRATION
- LAWN
- SITE FURNISHINGS
- BIKE RACK/ACCESSIBLE BENCH/FEATURE BENCH
- SITE FURNISHINGS BY OWNER

| 02 | re-issue for UDRP | 2026/03/31 |
|-------|------------------------------|------------|
| 01 | Issue for UDRP | 2025/11/20 |
| 00 | Issue for coordination | 2025/11/18 |
| rev'n | description / la description | yyyy/mm/dd |

FOTENN Planning + Design
396 Cooper Street, Suite 300
Ottawa, ON, CANADA K2P 2H7
613.730.5709
fotenn.com

north / le nord stamp / le cachet

project / projet

1209 MICHAEL ST. N

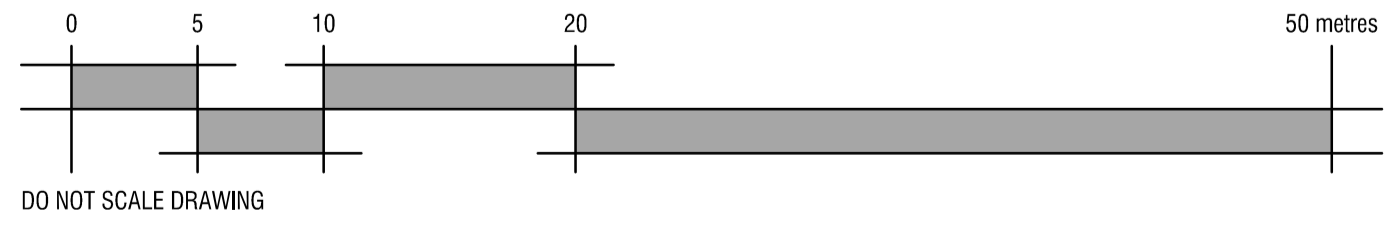
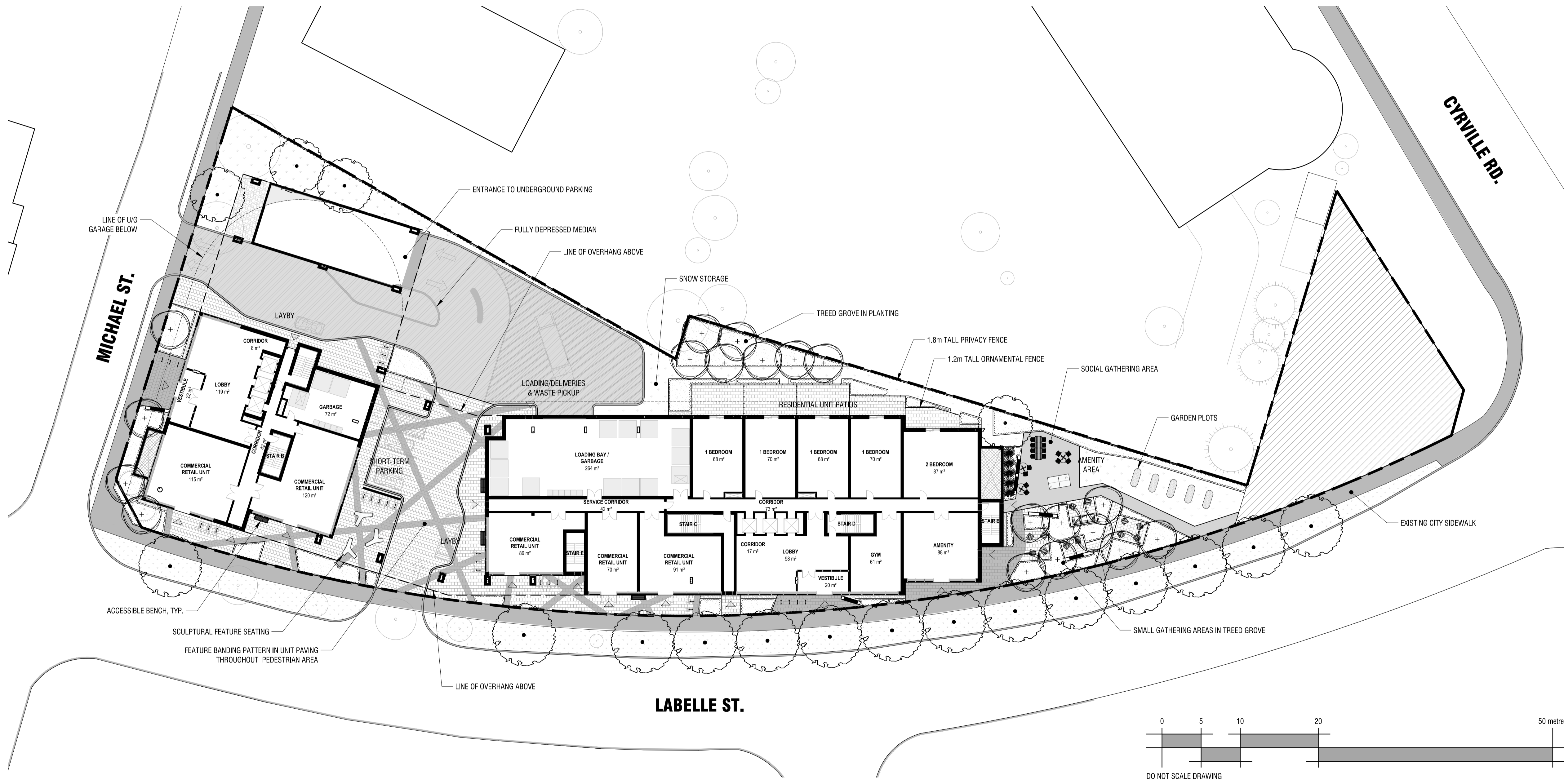
drawing / dessin

LANDSCAPE PLAN

| | | |
|------------------|--------------------------------|--------------------|
| designed / conçu | drawn / dessiné | reviewed / examiné |
| BM / SM | BM | SM |
| date | project number / No. du projet | |
| mmmm yyyy | X ##-## | |

drawing number / No. du dessin

L1



1 LANDSCAPE PLAN
L1 1:300

PRELIMINARY
NOT FOR CONSTRUCTION