

2024-11-01

PROJECT STATISTICS
1186 Wellington St Proposed Residential Development
Ottawa Ontario
16 Storey Concept - 4 Podium
BUILDING PERMIT SUBMISSION - AS PER CITY OF OTTAWA ZONING BY-LAW 2008-250 CONSOLIDATION

1.0 SITE AREA

Overall Site Area	sqm	sq.ft.	acres
Site Area	6,617,021	2,487	28,877

2.0 GROSS FLOOR AREAS (GFA)
2.0.1 Gross floor area means the total area enclosed by a building, above or below grade, measured from the exterior walls of outside walls and including floor area occupied by interior walls and floor area occupied by bay windows, but excluding:
(a) common hallways, corridors, stairwells, elevators shafts and other walls, steps and landings; (b) shaft 2008-250); (By-law 2008-250)
(c) common hallways, corridors, stairwells, elevators shafts and other walls, steps and landings; (d) shaft 2008-250); (By-law 2008-250)
(e) common laundry, storage and workshop facilities that serve the building or its tenants; (f) common storage areas that are necessary to the principal use of the building; (g) shaft 2008-250); (By-law 2008-250)
(h) common amenity areas and play areas accessory to a principal use on the lot; and (i) shaft 2008-250); (By-law 2008-250)
(j) things necessary for the operation of the building, including the structure hereinafter specified.

Buildings GFA	GFA	No. of Levels	sq.m.	sq.ft.
Commercial - Non-Residential GFA	1,099	1	1,099	11,839
Level Ground (podium)	1,099	1	1,099	11,839
Residential GFA	12,733			137,867
Level Ground (residential)	84	1	84	904
Level 2	1,206	1	1,206	13,072
Level 3-4	1,319	2	2,638	28,365
Level 5	1,126	1	1,126	12,120
Level 6	1,145	1	1,145	12,325
Level 7	623	1	623	6,730
Level 8-14	697	7	4,879	52,563
Level 15-16	660	2	1,320	14,208
Total Proposed GFA	16		13,832.0	148,888

3.0 FLOOR SPACE INDEX (FSI)
Total Proposed GFA / Site Area = 5.54

5.0 GROSS BUILDING AREAS (GBA)
Total area measured from the exterior surface of outside walls but excluding shaft void spaces.

Buildings GBA	GBA	No. of Levels	sq.m.	sq.ft.
Level Ground	1,300	1	1,300	20,431
Level 2	1,448	1	1,448	15,586
Level 3-4	1,472	2	2,944	31,689
Level 5	1,266	1	1,266	13,627
Level 6	1,288	1	1,288	13,864
Level 7	747	1	747	8,041
Level 8-14	745	7	5,215	56,161
Level 15-16	461	2	922	9,922
Total Proposed GBA	17		16,768.0	180,489

6.0 GROSS CONSTRUCTION AREAS (GCA)

Buildings GCA	GCA	No. of Levels	sq.m.	sq.ft.
Level P3	1931	1	1931	20,709
Level P2	2286	1	2286	24,606
Level P1	2286	1	2286	24,606
Level Ground	1983	1	1983	21,345
Level 2	1501	1	1501	16,157
Level 3-4	1520	2	3,040	32,811
Level 5	1319	1	1,319	14,198
Level 6	1342	1	1,342	14,445
Level 7	804	1	804	8,604
Level 8-14	786	7	5,496	59,144
Level 15-16	508	2	1,016	10,847
Total Proposed GCA	20		23,944.0	256,162

7.0 NO. OF RESIDENTIAL UNITS

Residential Units	Units / Floor	Levels	Units
Level Ground (podium)	0	1	0
Level 2	22	1	22
Level 3-4	22	2	44
Level 5	19	1	19
Level 6	20	1	20
Level 7	9	1	9
Level 8-14	12	7	84
Level 15-16	8	2	16
Total No. of units			214

8.0 AMENITY

Total Amenity Provided	Total
6 sq.m. per dwelling unit	1,284 sq.m.
Communal Amenity Provided	442 sq.m.
Private Amenity Provided	442 sq.m.
Total Amenity Provided	1,168 sq.m.
Total Amenity Required	1,284 sq.m.
Total Communal + Total Private	1,168 sq.m.

9.0 PARKING

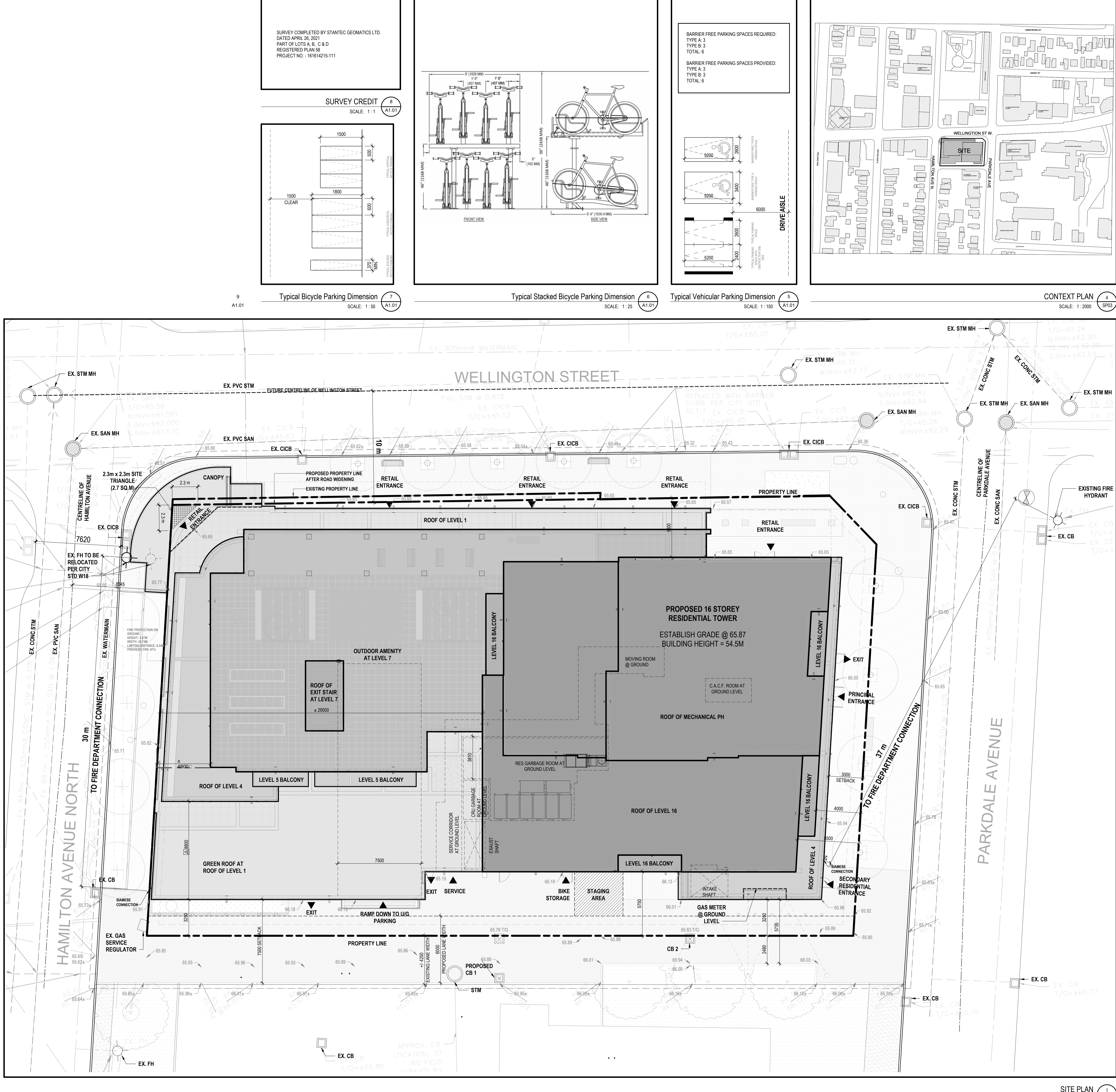
Parking Required	Total
Residential: 6.0 per dwelling unit after first 12 units, minus 10 percent of all located below g	91
Visitor: 0.1 per dwelling unit after first 12 units	21
Retail: 1.25 per 100 sq.m. of GFA	14
Total Parking Required	126
Parking Provided	143
Residential	122
Visitor	21
Retail	0
Total Parking Provided	143
Barrier Free Parking Required	3
Total Barrier Free Parking Provided	3
Barrier Free Parking Provided	3
Total Barrier Free Parking Provided	3

10.0 BICYCLE PARKING

Total Residential Bicycle Spaces Provided	Total
1.0 per dwelling unit	91
Total Residential Bicycle Spaces Provided	91
Barrier Free Bicycle Spaces Provided	5
Total Barrier Free Bicycle Spaces Provided	5

11.0 LOCKER ROOM

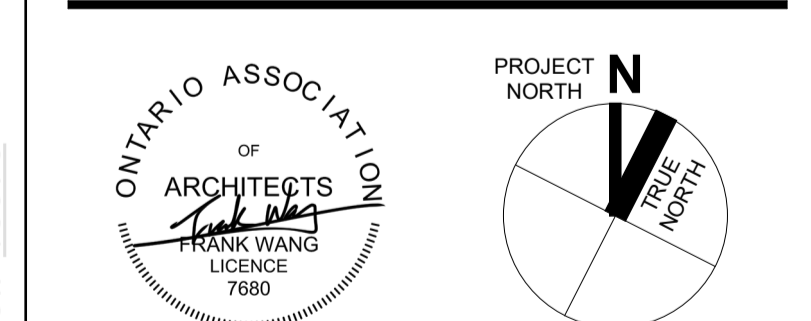
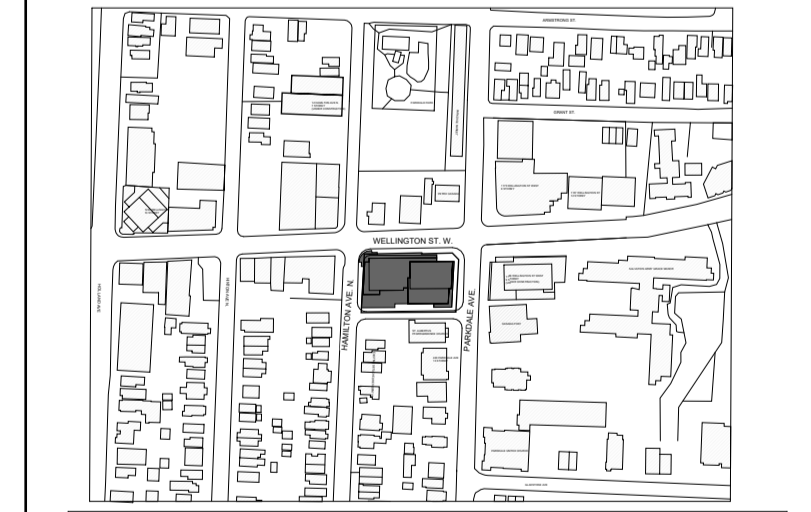
Total Residential Locker Room Provided	Total
Level P3	49
Level P2	46
Level P1	11
Total	106



- ISSUED FOR:
- 2021-06-25 ISSUED FOR OPA/ZBLA
 - 2021-11-25 RE-ISSUED FOR OPA/ZBLA
 - 2022-06-29 ISSUED FOR SPA
 - 2022-12-09 RE-ISSUED FOR SPA
 - 2023-04-19 RE-ISSUED FOR SPA
 - 2024-11-08 RE-ISSUED FOR CITY AND OLD COORDINATION
 - 2024-11-21 ISSUED FOR FINAL SPA
 - 2024-11-29 ISSUED FOR FINAL SPA

METRIC
THIS DRAWING IS COPYRIGHTED AND MUST NOT BE USED, REPRODUCED, OR REVISED WITHOUT WRITTEN PERMISSION. ALL DIMENSIONS ARE IN MILLIMETERS UNLESS OTHERWISE NOTED. VERIFY DIMENSIONS. DO NOT SCALE THIS DRAWING. REPORT INCONSISTENCIES AND OMISSIONS TO THE CONSULTANT FOR CLARIFICATION BEFORE COMMENCING WITH THE WORK. DEVIATIONS FROM THE CONTRACT DOCUMENTS WITHOUT WRITTEN APPROVAL FROM THE CONSULTANT ARE SUBJECT TO CORRECTION AT THE CONTRACTOR'S EXPENSE.

- CLIENT**
LIMITED PARTNERSHIP
200-180 KENT STREET
OTTAWA, ON K1P 0K6
Tel: 613-230-7051
- ARCHITECT**
DIALOG
35 JOHN STREET, SUITE 500
TORONTO, ON CANADA, M5V 3G6
Tel: 416-996-0220
- URBAN PLANNER**
PETERSON
396 COOPER ST., SUITE 300
OTTAWA, ON K2P 2H7
Tel: 613-720-5709
- LANDSCAPE ARCHITECT**
DIALOG
35 JOHN STREET, SUITE 500
TORONTO, ON CANADA, M5V 3G6
Tel: 416-996-0220
- ENVIRONMENTAL/GEOTECHNICAL**
TERREX ENVIRONMENTAL
20 GARDINER ROAD, UNIT 1
OTTAWA, ON K2E 6B3
Tel: 613-745-5471
- HERITAGE CONSULTANT**
MIRA
222 LAURIER AVENUE EAST, STUDIO 201
OTTAWA, ON K1R 6P7
Tel: 613-244-2323
- CIVIL ENGINEER**
CGSL
120 BERBROAD, SUITE 103
OTTAWA, ON K2E 1E9
Tel: 613-836-0892
- TRAFFIC CONSULTANT**
CGM TRANSPORTATION
6 PLAZA COURT
OTTAWA, ON K2H 7W1
Tel: 613-697-3797
- SURVEY**
STANTEC
1331 CLYDE AVE., SUITE 400
OTTAWA, ON K2E 3S4
Tel: 613-722-4425
- NOISE/WIND CONSULTANT**
GRADIENT WIND
127 WILGREEN ROAD
OTTAWA, ON K2A 1A3
Tel: 613-836-0334



1186-1194
WELLINGTON ST W
1186-1194 Wellington St W
Ottawa, ON K1Y 2Z5

SITE PLAN, CONTEXT PLAN, STATISTICS

DRAWN: Author
PLOT DATE: 11/28/2024 3:16:21 PM
CHECKED: Checker

SP03

ABXXXXXX - 2002323