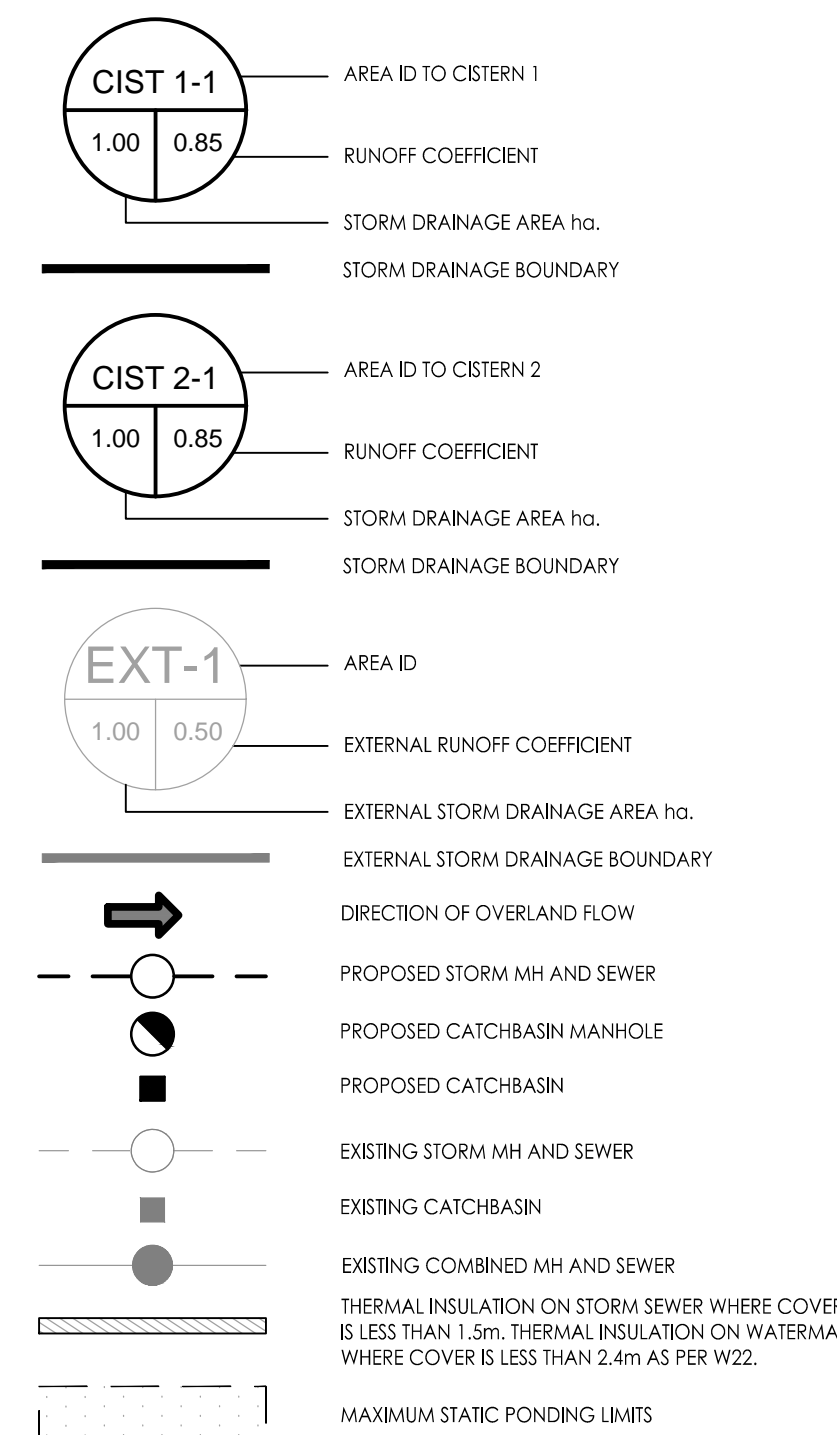


Copyright Reserved

The Contractor shall verify and be responsible for all dimensions. DO NOT scale the drawing - any errors or omissions shall be reported to Stantec without delay.
The Copyrights to all designs and drawings are the property of Stantec. Reproduction or use for any purpose other than that authorized by Stantec is forbidden.

Legend



Notes

- ALL CATCH BASINS AND TRENCH DRAINS TO BE CONNECTED TO INTERNAL PLUMBING AND COLLECTED IN STORM WATER MANAGEMENT CISTERN. INSTALLATION BY OTHERS.
- STORMWATER MANAGEMENT TO BE PROVIDED THROUGH 2 CISTERNS. ONE CISTERN PER DEVELOPMENT PHASE.
 PHASE 1 CISTERN = 110.0m³
 PHASE 2 CISTERN = 170.0m³
 MAX. CISTERN RELEASE RATE TO STORM SEWER
 PHASE 1 CISTERN RELEASE RATE = 14.3/L/s
 PHASE 2 CISTERN RELEASE RATE = 23.0/L/s

2	REVISED AS PER CITY COMMENTS	MJS	DT	24.05.20	
1	REVISED AS PER CITY COMMENTS	MJS	DT	24.03.13	
0	ISSUED FOR SPA	MJS	MF	23.05.15	
Revision		By	Appd.	YY.MM.DD	
File Name:	160401663 DB - 1.dwg	MJS	DT	MJS	23.02.06
		Dwn.	Chkd.	Dgn.	YY.MM.DD

Permit-Seal

Client/Project

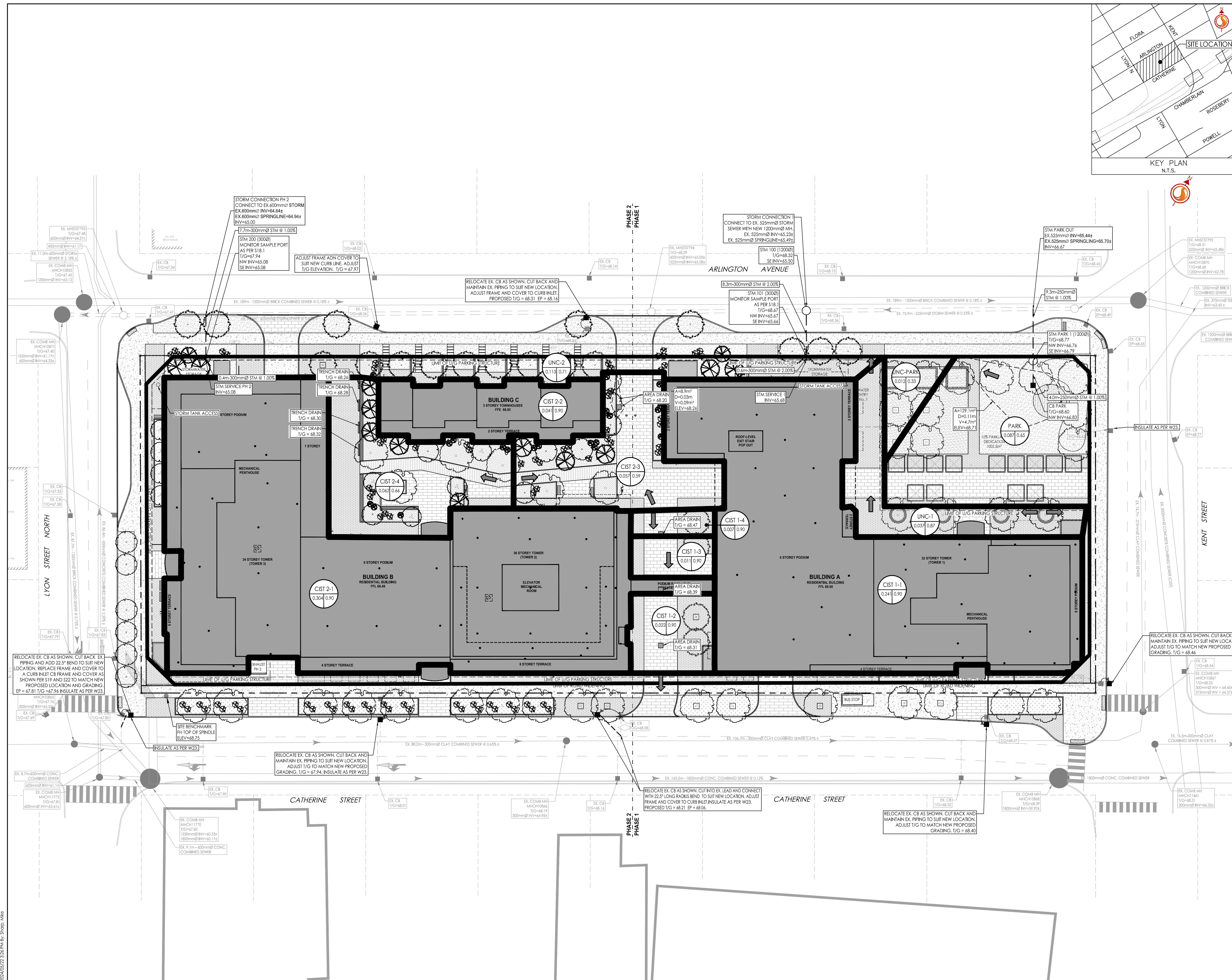
BRIGIL

265 CATHERINE STREET

OTTAWA, ONTARIO, CANADA

Title
STORM DRAINAGE PLAN

Project No.	Scale	0 3 9 15m
160401663	1:300	
Drawing No.	Sheet	Revision
SD-1	6 of 7	2



I:\Projects\2024\160401663\Design\Drawings\160401663 DB - 1.dwg
 2024/05/20 10:51 AM by: [unreadable]