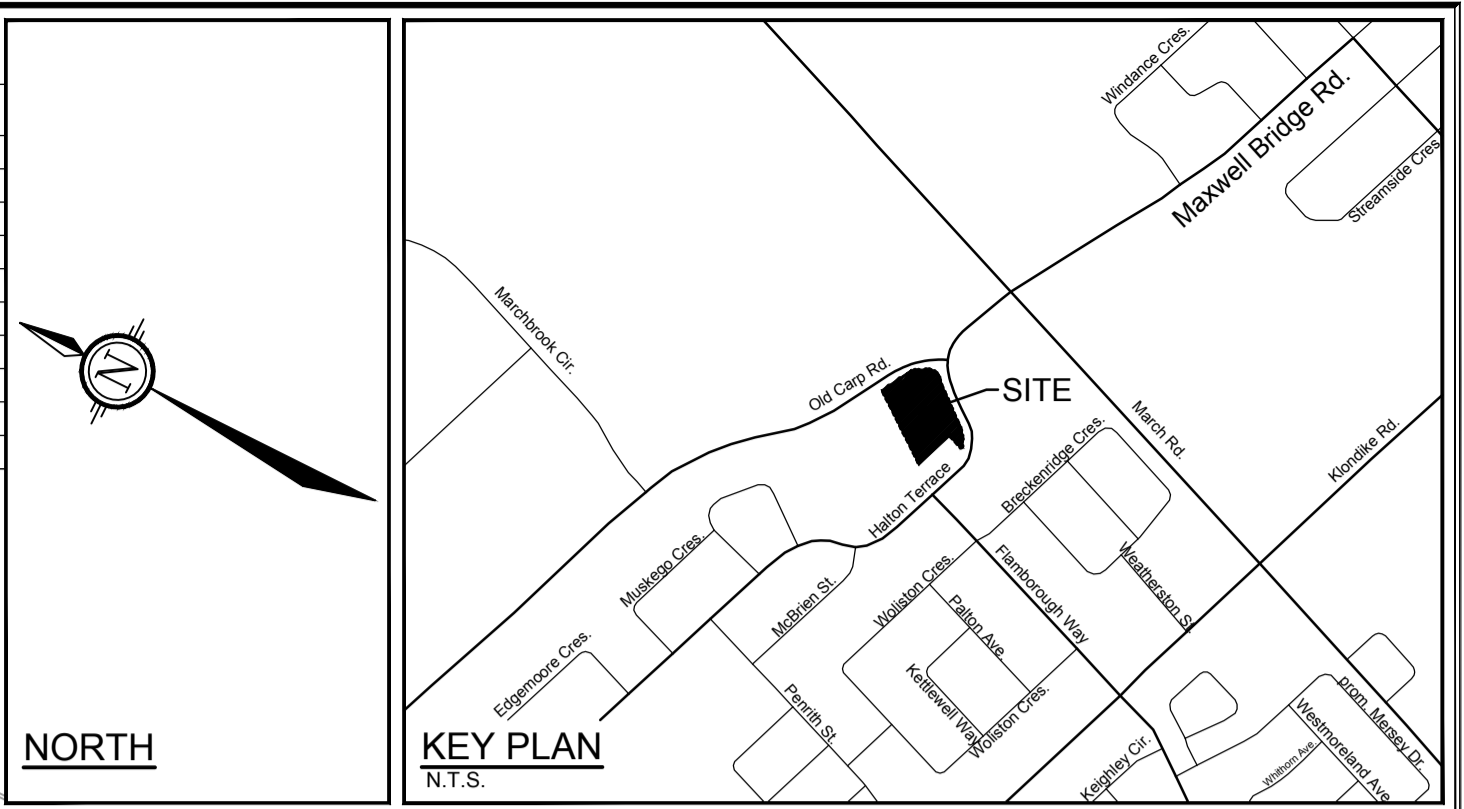
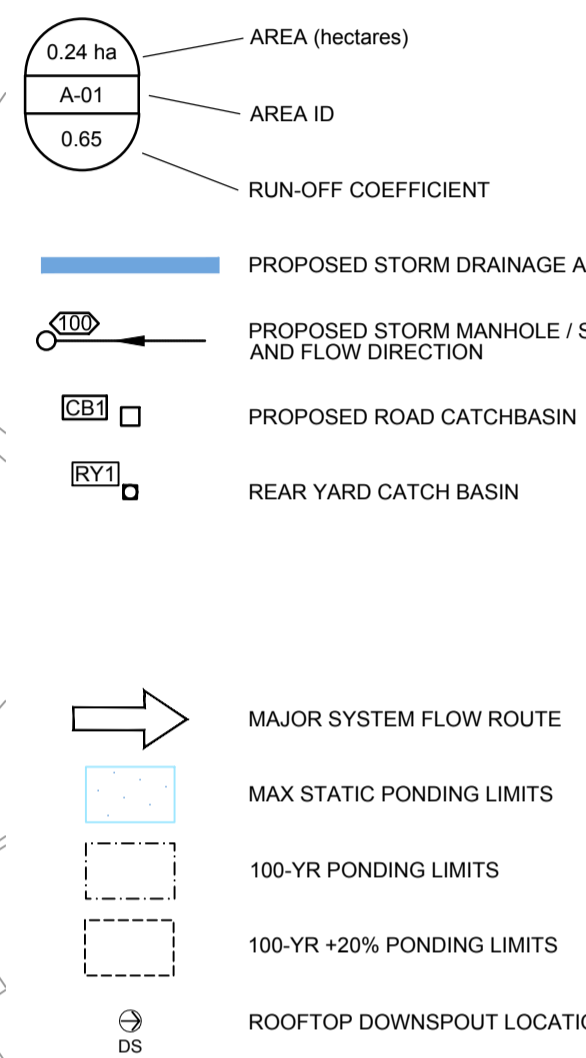


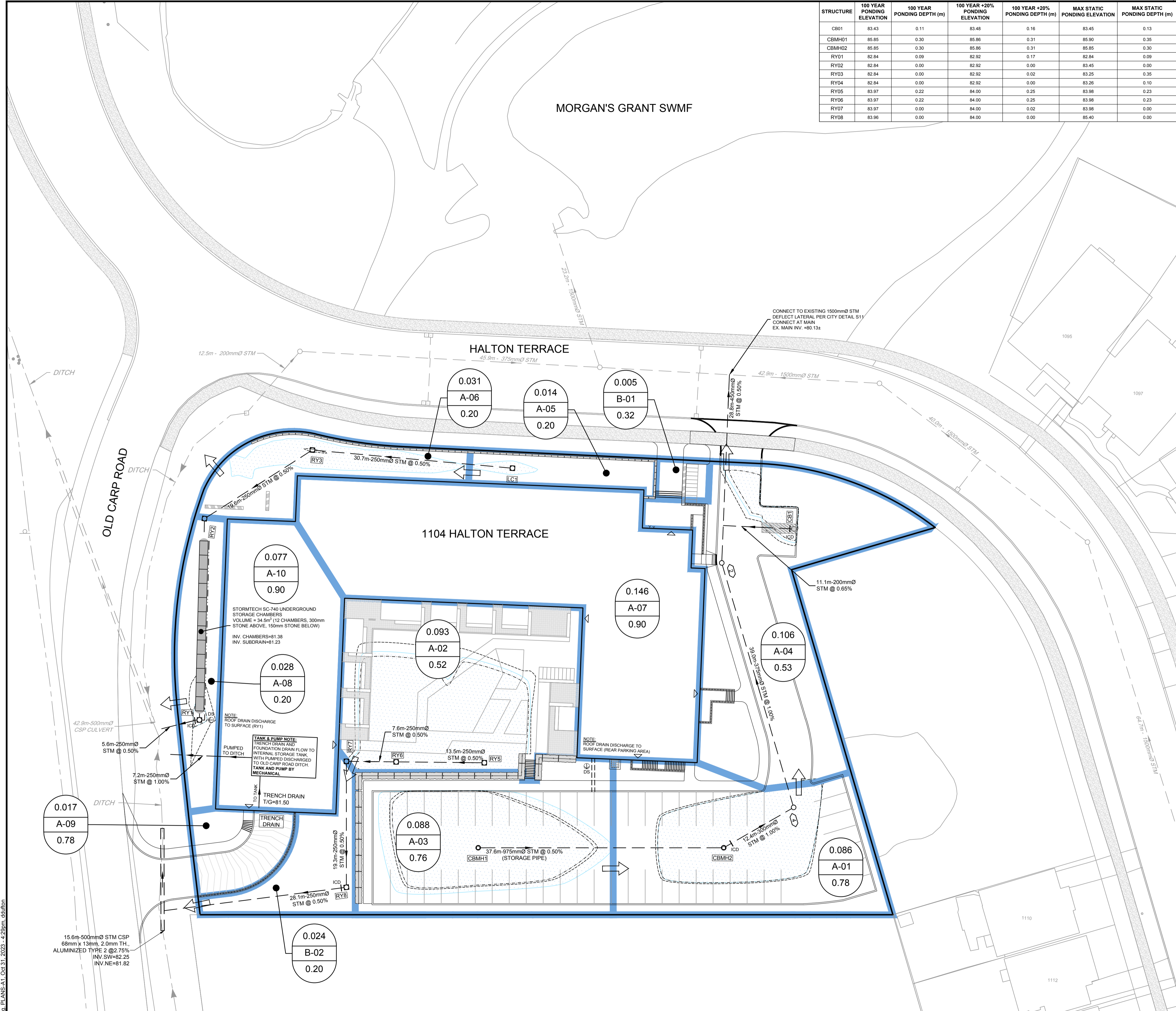
STRUCTURE	100 YEAR PONDING ELEVATION	100 YEAR PONDING DEPTH (m)	100 YEAR +20% PONDING ELEVATION	100 YEAR +20% PONDING DEPTH (m)	MAX STATIC PONDING ELEVATION	MAX STATIC PONDING DEPTH (m)
CB01	83.43	0.11	83.48	0.16	83.45	0.13
CBMH01	85.85	0.30	85.86	0.31	85.90	0.35
CBMH02	85.85	0.30	85.86	0.31	85.85	0.30
RY01	82.84	0.09	82.92	0.17	82.84	0.09
RY02	82.84	0.00	82.92	0.00	83.45	0.00
RY03	82.84	0.00	82.92	0.02	83.25	0.35
RY04	82.84	0.00	82.92	0.00	83.26	0.10
RY05	83.97	0.22	84.00	0.25	83.98	0.23
RY06	83.97	0.22	84.00	0.25	83.98	0.23
RY07	83.97	0.00	84.00	0.02	83.98	0.00
RY08	83.96	0.00	84.00	0.00	85.40	0.00



NORTH



ICD TABLE				
STRUCTURE ID	ICD TYPE	INVERT (m)	100-YR HEAD (m)	100-YR PEAK FLOW (L/s)
CB1	TEMPEST MHF (120mm)	NW=82.32	1.11	28.8
CBMH2	TEMPEST LMF	SE=82.89 NW=83.49	2.96	9.5
RY1	TEMPEST LMF	NE=81.38	1.61	4.3
RY8	TEMPEST LMF	NE=82.44 NW=82.44	1.52	4.2



NOTE:
THE POSITION OF ALL POLE LINES, CONDUITS, WATERMANS, SEWERS AND OTHER UNDERGROUND AND OVERGROUND UTILITIES AND STRUCTURES IS NOT NECESSARILY SHOWN ON THE CONTRACT DRAWINGS, AND WHERE SHOWN, THE ACCURACY OF THE POSITION OF SUCH UTILITIES AND STRUCTURES IS NOT GUARANTEED. BEFORE STARTING WORK, DETERMINE THE EXACT LOCATION OF ALL SUCH UTILITIES AND STRUCTURES AND ASSUME ALL LIABILITY FOR DAMAGE TO THEM.

No.	REVISION	DATE	BY
2.	CITY SUBMISSION	NOV 3/23	MAB
1.	CITY SUBMISSION	OCT 19/21	MAB

SCALE	
1:300	1:300
0 3 6 9 12	

DESIGN	
DTD	
CHECKED	LWR
DRAWN	DTD
CHECKED	MAB
APPROVED	JGR

FOR REVIEW ONLY

LICENSED PROFESSIONAL ENGINEER
L.R. WILSON
100160065
PROVINCE OF ONTARIO

LICENSED PROFESSIONAL ENGINEER
M.A. BISSETT
2023.11.03
PROVINCE OF ONTARIO

NOVATECH
Engineers, Planners & Landscape Architects
Suite 200, 240 Michael Cowpland Drive
Ottawa, Ontario, Canada K2M 1P6
Telephone (613) 254-9643
Facsimile (613) 254-5867
Website www.novatech-eng.com

CITY OF OTTAWA
1104 HALTON TERRACE

PROJECT No. 119024
REV # 2
DRAWING No. 119024-STM2

STORM DRAINAGE AREA PLAN

M:\2019\119024\CAD\Design\119024-STM.dwg, PLANS-A1, Oct 31, 2023, 4:29pm, addison

PLAN #18654 D07-12-21-0186