

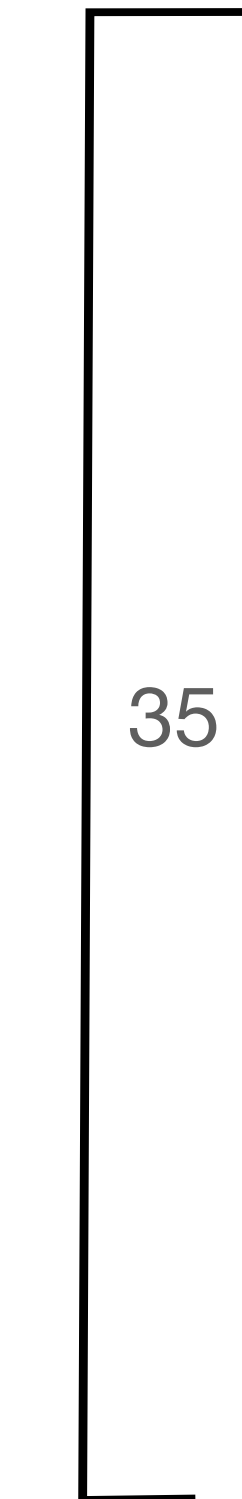


**Typical Floor Plate**

approx-789 M<sub>2</sub> / 8,500 s.f.



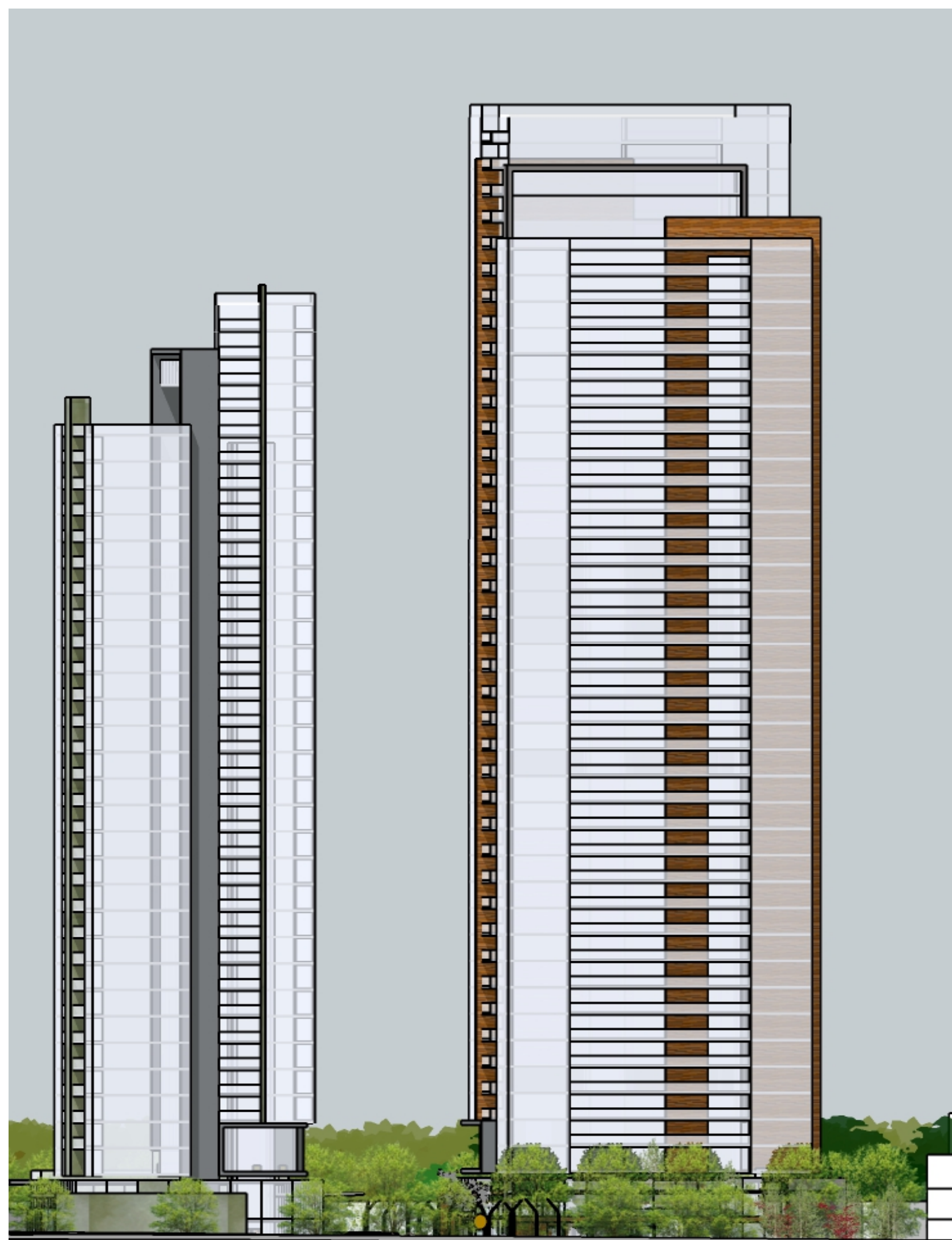
37



35

2

35 floors x 8 units = 280 units  
 35 floors x 7 units = 245 units



38

2

38 floors x 8 units = 304 units  
 38 floors x 7 units = 266 units



40

**Proposed Unit #'s**

\*Range 584 units / 511 units

Dependent on the mix of one, two or three bedroom units