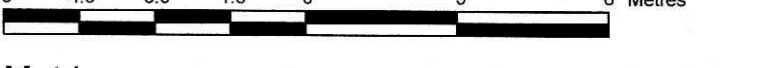


SURVEYOR'S REAL PROPERTY REPORT
PART 1 Plan of
LOTS 32, 33
South MacLaren Street and
LOTS 32, 33, 34, 35
North Gilmour Street
REGISTERED PLAN 27292
CITY OF OTTAWA

Surveyed by Annis, O'Sullivan, Vollebek Ltd.

Scale 1:150



Metric
 DISTANCES SHOWN ON THIS PLAN ARE IN METRES AND
 CAN BE CONVERTED TO FEET BY DIVIDING BY 0.3048

Surveyor's Certificate

- I CERTIFY THAT
- This survey and plan are correct and in accordance with the Survey Act and the Surveyors Act and the regulations made under them.
 - The survey was completed on the 14th day of April, 2021.

April 14, 2021

E. H. Herweyer
 Ottawa Land Surveyor

PART 2
 THIS PLAN MUST BE READ IN CONJUNCTION WITH
 SURVEY REPORT DATED: APRIL 15, 2021

ANNIS, O'SULLIVAN, VOLLEBEK LTD. grants to
 KENT MACLAREN STREET LTD., "The Client", their solicitors,
 mortgagees, and other related parties, permission to use original, signed, sealed
 copies of the Surveyor's Real Property Report in transactions involving The Client.

Notes & Legend

Symbol	Denotes	Survey Monument Planted
—○—	Survey Monument Found	—○—
—■—	Standard Iron Bar	—■—
—SSB—	Short Standard Iron Bar	—SSB—
—B—	Iron Bar	—B—
—CC—	Cut Cross	—CC—
—CP—	Concrete Pin	—CP—
—(WIT)—	Witness	—(WIT)—
—MOZ.—	Measured	—MOZ.—
—(MOZ)—	Annis, O'Sullivan, Vollebek Ltd.	—(MOZ)—
—(AO3)—	(AO3) Plan March 23, 2005 (Ref. 6109-05)	—(AO3)—
—(P2)—	(AO3) Plan November 12, 1991 Lot 32 (Ref. 0-408-91)	—(P2)—
—(P3)—	(AO3) Plan November 12, 1991 Lot 33 (Ref. 0-408-91)	—(P3)—
—(P4)—	(AO3) Plan October 18, 2010 (Ref. 11122-10)	—(P4)—
—(P5)—	Registered Plan 27292	—(P5)—
—(P6)—	(87) Plan October 23, 1973	—(P6)—
—(P7)—	Plan 4R-8223	—(P7)—
—○H—	Fire Hydrant	—○H—
—○MH—	Maintenance Hole (Hydro)	—○MH—
—○MH-S—	Maintenance Hole (Sanitary)	—○MH-S—
—○MH-T—	Maintenance Hole (Bell Telephone)	—○MH-T—
—○MH-T—	Maintenance Hole (Traffic)	—○MH-T—
—OW—	Overhead Wires	—OW—
—CB—	Catch Basin	—CB—
—CB-I—	Catch Basin Inlet	—CB-I—
—GM—	Gas Meter	—GM—
—SM—	Sign	—SM—
—R—	Rollard	—R—
—CLF—	Chain Link Fence	—CLF—
—BF—	Board Fence	—BF—
—SRW—	Stone Retaining Wall	—SRW—
—CRW—	Concrete Retaining Wall	—CRW—
—BRW—	Brick Retaining Wall	—BRW—
—Fdn—	Foundation	—Fdn—
—AC—	Air Conditioner	—AC—
—Elev—	Location of Elevations	—Elev—
—Elev—	Top of Wall Elevations	—Elev—
—CAL—	Curbline	—CAL—
—T/G—	Top of Gate	—T/G—
—Inv—	Invert	—Inv—
—○D—	Deciduous Tree	—○D—
—○C—	Coniferous Tree	—○C—
—○P-W—	Wood Pole	—○P-W—
—○P-L—	Traffic Light	—○P-L—
—○P-U—	Utility Pole	—○P-U—
—AN—	Anchor	—AN—
—○L-S—	Light Standard	—○L-S—
—○P—	Flag Pole	—○P—
—S—	Underground Sanitary Sewer	—S—
—W—	Underground Water	—W—
—P—	Underground Power	—P—
—G—	Underground Gas	—G—
—T—	Underground Traffic	—T—
—B—	Underground Bell	—B—
—R—	Underground Riggers	—R—
—BH—	Proposed Borehole	—BH—
—GV—	Gas Valve	—GV—
—VC—	Valve Chamber (Watermain)	—VC—
—WV—	Water Valve	—WV—

Bearings are grid, derived from Can-Net 1988 Real Time Network
 GPS observations, MTM Zone 9 (78°30' West Longitude) NAD-83
 (original).

For bearing comparisons, a rotation of 1°18'00" counter-clockwise
 was applied to bearings on plans P1, P2, P3, P4.

ELEVATION NOTES

- Elevations shown are geoidic and are referred to the CGVD28 geoidic datum derived from vertical control monument No. 3623 having an elevation of 73.154 metres.
- It is the responsibility of the user of this information to verify that the job benchmark has not been altered or disturbed and that its relative elevation and description agrees with the information shown on this drawing.

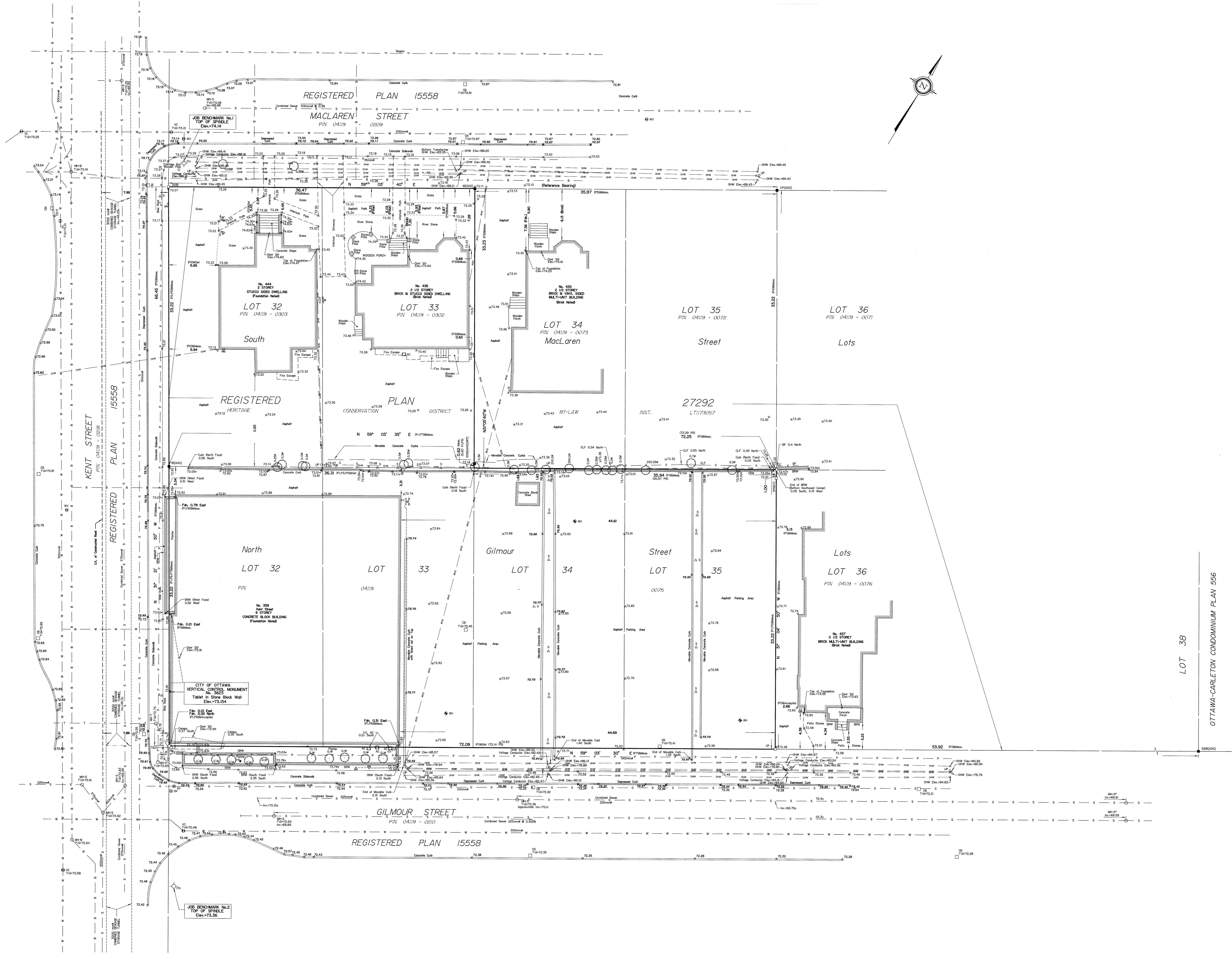
UTILITY NOTES

- This drawing cannot be accepted as acknowledging all of the utilities and it will be the responsibility of the user to contact the respective utility authorities for confirmation.
- Only visible surface utilities were located.
- A field location of underground plant by the pertinent utility authority is mandatory before any work involving breaking ground, probing, excavating, etc.
- Maintenance Holes are marked by "U". Underground services and inverts are taken from the City of Ottawa Engineering Plans E-12-17, E-12-22, Owp. No. 9921 (Contract 15214-0308), Plan No. 1955 (Sheet 2 of 2), Plan No. 2061 (Sheet 1 of 6), Plan No. 2062 (Sheet 2 of 6), Plan H118-2.

ASSOCIATION OF ONTARIO
 LAND SURVEYORS
 LAND SUBMISSION FORM
 V-11478

THIS PLAN IS NOT VALID UNLESS
 IT IS AN UNREVISED ORIGINAL
 COPY ISSUED BY THE SURVEYOR
 IN ACCORDANCE WITH
 REGULATION 1026, SECTION 29 (3).

ANNIS, O'SULLIVAN, VOLLEBEK LTD.
 14 Carleton Place, Suite 500
 Mississauga, ON L4Y 4P8
 Phone: (905) 277-0800 / Fax: (905) 271-0379
 Email: annis@annisvollebek.com



LOT 38
 OTTAWA-CARLETON CONDOMINIUM PLAN 556