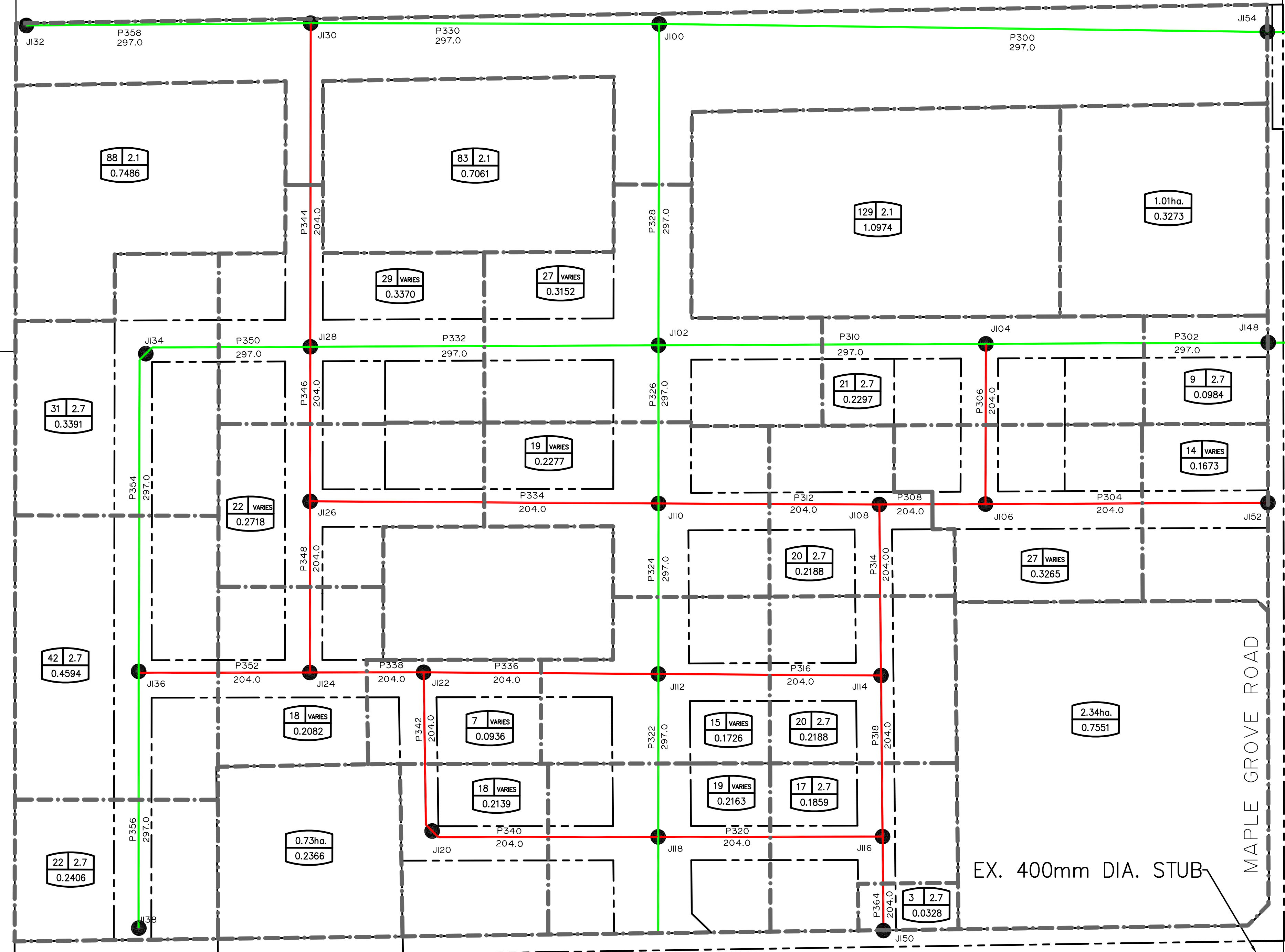


LEGEND

- PROPOSED 200mm ϕ WATERMAIN
- PROPOSED 300mm ϕ WATERMAIN
- - - EXISTING 200mm ϕ WATERMAIN
- - - EXISTING 300mm ϕ WATERMAIN
- - - EXISTING 400mm ϕ WATERMAIN

- J301 NODE NUMBER
- NODE LOCATION
- NO. OF UNITS
POPULATION DENSITY
- AVERAGE DAY DEMAND FLOW
- PROPOSED PHASE A



CONNECTION POINT

CONNECTION POINT

EX. 400mm DIA. STUB

HUNTMAR DRIVE

MAPLE GROVE ROAD

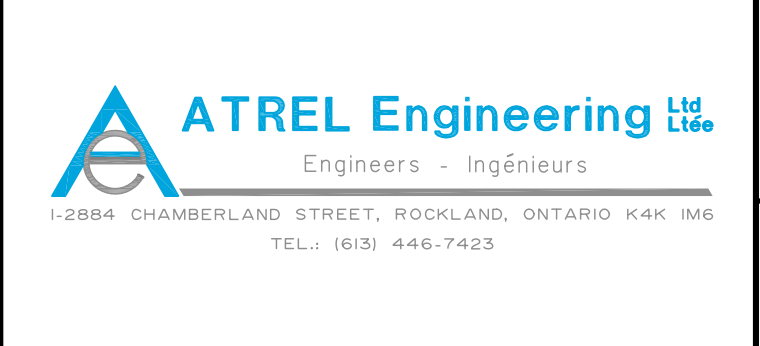
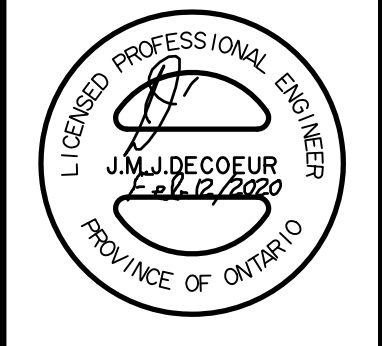
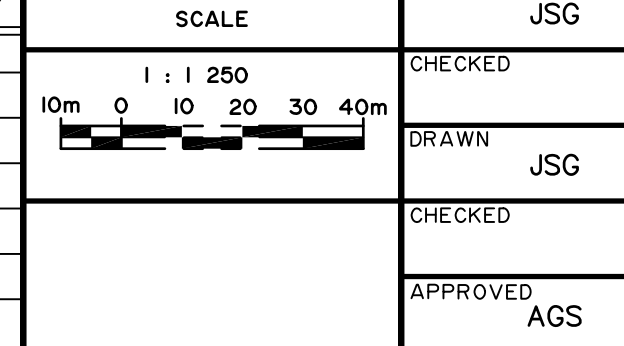
POSSIBLE FUTURE CONNECTIONS

THE POSITION OF ALL POLE LINES, CONDUITS, WATERMANS, SEWERS AND OTHER UNDERGROUND AND OVERGROUND UTILITIES AND STRUCTURES IS NOT NECESSARILY SHOWN ON THE CONTRACT DRAWINGS, AND WHERE SHOWN, THE ACCURACY OF THE POSITION OF SUCH UTILITIES AND STRUCTURES IS NOT GUARANTEED. BEFORE STARTING WORK, DETERMINE THE EXACT LOCATION OF ALL SUCH UTILITIES AND STRUCTURES AND ASSUME ALL LIABILITY FOR DAMAGE TO THEM.



No.	REVISION	APPLIES WHEN DRAWING MODIFIED	DATE	BY

DESIGN	JSG
CHECKED	JSG
DRAWN	JSG
CHECKED	JSG
APPROVED	AGS



CITY OF OTTAWA
130 HUNTMAR DRIVE
PLAN WATERMAIN LAYOUT AND DEMAND

LIONESS DEVELOPMENT INC.

PROJECT No. 191002
DATE JANUARY 2020
DRAWING No. 191002-WMI