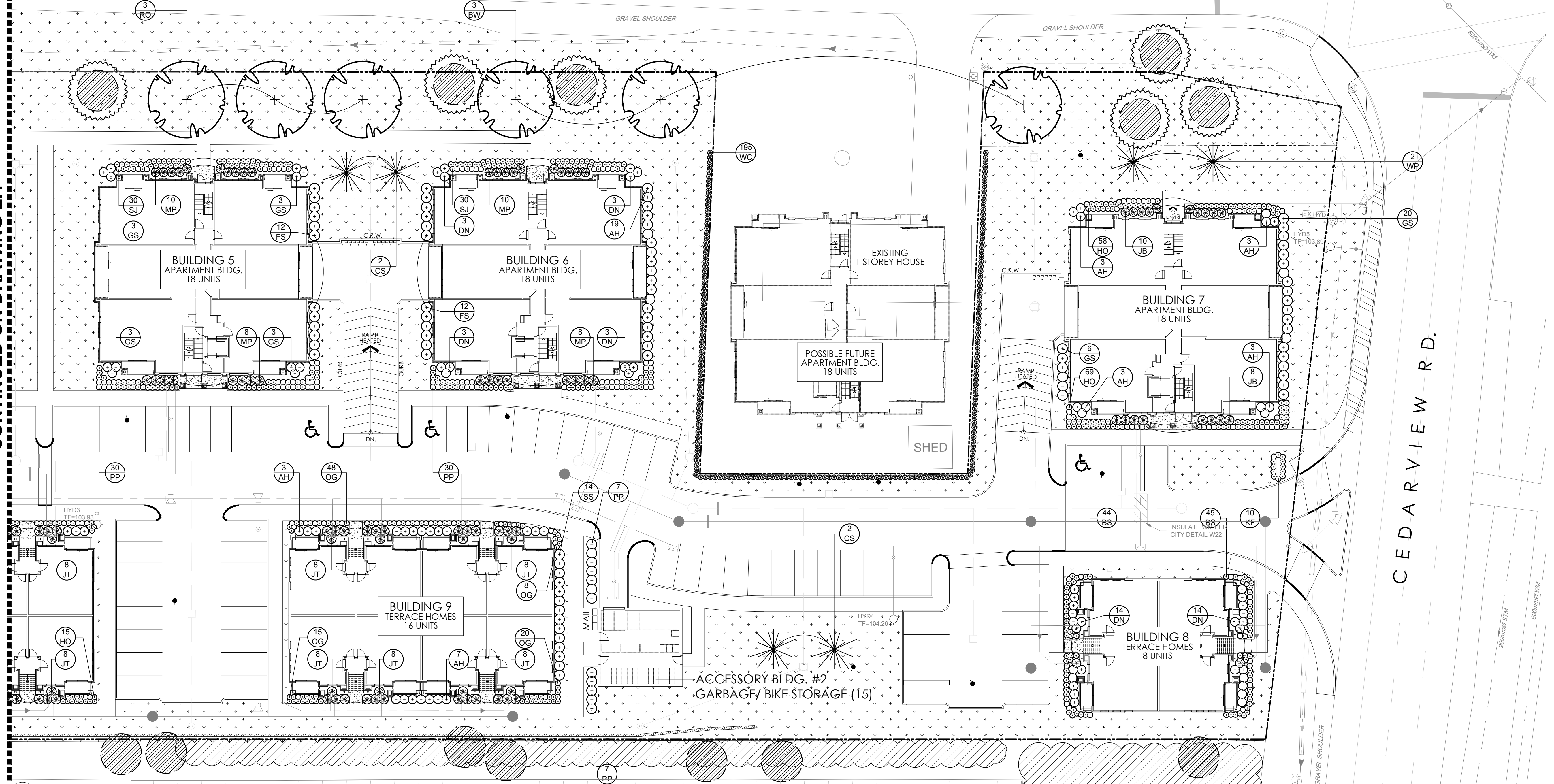


CONTINUED ON DRAWING L.1

FALLOWFIELD ROAD



CLIENT:
PHOENIX HOMES
18 BENTLEY AVENUE
OTTAWA, ONT. K2E1T8
TEL: 727-9227 FAX: 727-2235

CONSULTANTS:
ARCHITECTS:
M. David Blakely
Architect, Inc.
300 Prince of Wales Dr. Unit 111, Ottawa, Ontario
Phone: (613) 821-8111 Fax: (613) 821-8112

CIVIL ENGINEERS:
NOVATECH
ENGINEERING
CONSULTANTS LTD.
ENGINEERS & PLANNERS

- LEGEND
- EXISTING TREE TO REMAIN (SEE TREE CONSERVATION REPORT FOR DETAILS)
 - TREE PROTECTION FENCE (SEE DETAIL 2/TCR FOR DETAILS)
 - PROPOSED SOD
 - PROPOSED DECIDUOUS TREE
 - PROPOSED CONIFEROUS TREE
 - PROPOSED SHRUBS / PERENNIALS / ORNAMENTAL GRASSES

2	REVISED AS PER CITY COMMENTS	09/06/2019	LC	JL
1	ISSUED FOR SITE PLAN SUBMISSION	07/29/2019	ML	JL
No.	Issue	Date	Drawn	Checked
		mm/dd/yyyy	DR	CK

JAMES B. LENNOX & ASSOCIATES INC.
LANDSCAPE ARCHITECTS
3333 CARLING AVE. OTTAWA, ONTARIO K2J 5A8
Tel: (613) 722-5168 Fax: (866) 343-3942

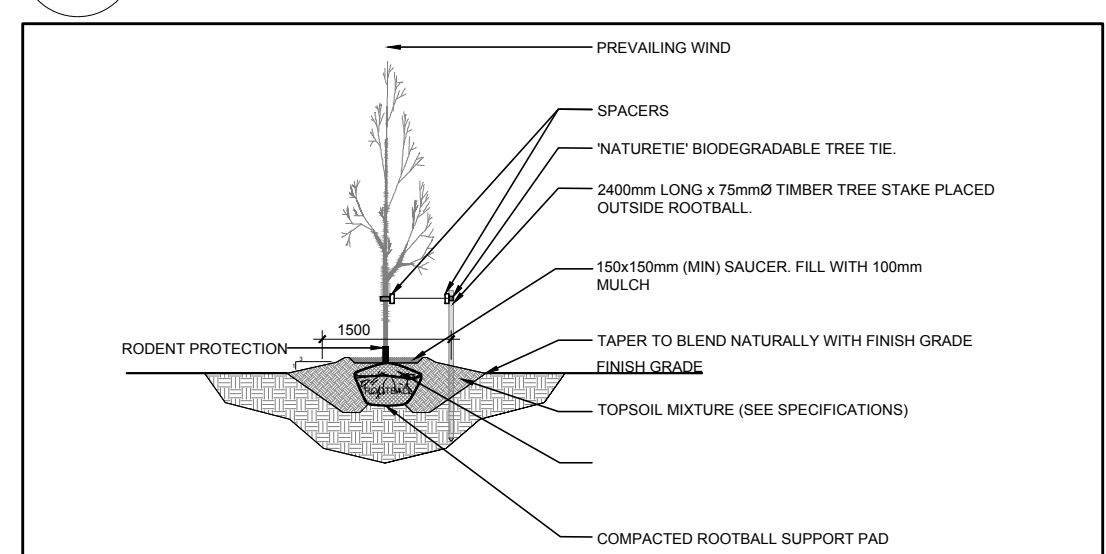
PROJECT
4190 TO 4236 FALLOWFIELD, OTTAWA ON

DRAWING
LANDSCAPE PLAN

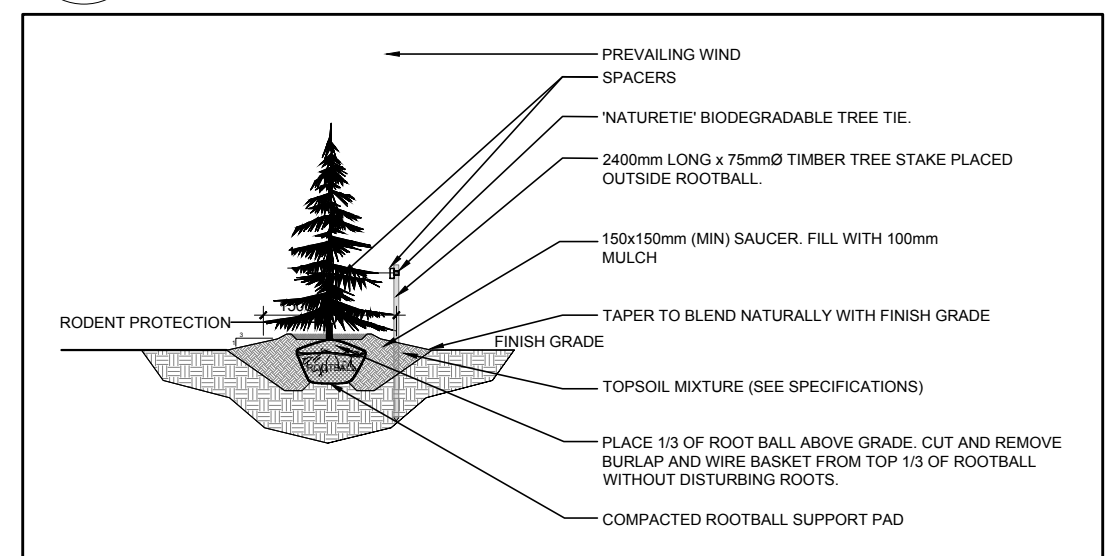
STAMP
ASSOCIATION OF LANDSCAPE ARCHITECTS
MEMBER
SCALE
AS SHOWN
START DATE
APRIL 2018
PROJECT NO.
18-DCR-1830

PROJECT NORTH
DRAWING NO.
L.2
PLOT SIZE ARCH-D

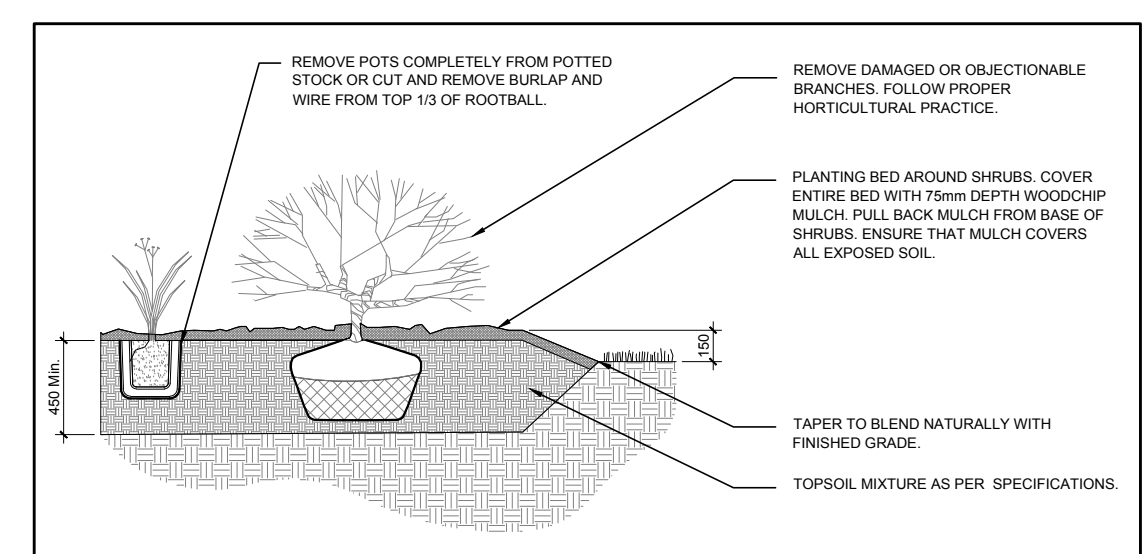
1 LANDSCAPE PLAN
L.2 SCALE 1:250



2 DECIDUOUS TREE PLANTING
L.2 SCALE: NTS



3 CONIFEROUS TREE PLANTING
L.2 SCALE: NTS



4 SHRUB / PERENNIAL / ORNAMENTAL GRASS PLANTING
L.2 SCALE: NTS

- GENERAL NOTES:**
- It is the responsibility of the appropriate contractor or official to report any errors, omissions or discrepancies on this plan with actual site conditions to the Landscape Architect before proceeding with construction.
 - The contractor is to notify all utility companies and authorities prior to any excavation and ascertain locations of underground services.
 - The contractor is to reinstate all areas and items damaged as a result of construction activity.
 - The contractor is to comply with all pertinent codes and by-laws.
 - The contractor is to maintain a positive surface run-off throughout the entire construction period.
 - The Landscape Architect is not responsible for subsurface conditions.
 - The contractor is to identify all existing trees to remain on site with the Landscape Architect prior to construction.
 - The contractor is to stake the proposed location of all plant material in conjunction with the Landscape Architect prior to excavation.
 - Minimum distances for selected deciduous trees are as follows:
 - Building Foundations 7.5m
 - Sidewalks 1.5m
 - Public Streets 2.5m
 - Underground Infrastructure 2.0m
 - All trees within 1m of underground utility trenches are to be excavated by hand.
 - Remove all protective wrapping from tree trunks after installation.
 - Staking of trees shall only be performed if necessary.
 - Ensure that mulch is pulled back a min. distance of 75mm from base of tree trunk.

PROPOSED PLANT LIST

KEY	QTY.	BOTANICAL NAME	COMMON NAME	SIZE	CONDITION	REMARKS
TREES						
BW	3	Tilia americana	Basswood	60mm cal.	B&B	
CS	4	Picea pungens 'Pyramidalis'	Columnar Colorado Spruce	1800mm ht.	B&B	
RO	3	Quercus rubra	Red Oak	60mm cal.	B&B	
WP	2	Pinus strobus	White Pine	1800mm ht.	B&B	
SHRUBS						
AH	41	Hydrangea arborescens 'Annabelle'	Annabelle Hydrangea	1 gallon pot	Potted	1000mm o.c.
DN	40	Physocarpus opulifolius 'Little Devil'	Little Devil Ninebark	600mm ht.	Potted	1000mm o.c.
FS	24	Rhus aromatica 'Gro-Low'	Gro Low Fragrant Sumac	600mm ht.	Potted	1000mm o.c.
GS	38	Spiraea x arguta	Garland Spirea	600mm ht.	Potted	1000mm o.c.
JB	18	Juniperus sabina 'Blue Danube'	Blue Danube Juniper	600mm spr.	Potted	1000mm o.c.
JT	56	Juniperus sabina 'Tamariscifolia'	Tamarax Juniper	600mm spr.	Potted	1000mm o.c.
MP	36	Pinus mugo 'Pumilio'	Dwarf Mugo Pine	600mm spr.	Potted	1000mm o.c.
PP	74	Spiraea japonica 'Little Princess'	Little Princess Spirea	600mm ht.	Potted	1000mm o.c.
SJ	60	Hypericum kalmianum 'Ames'	Ames' St. John's Wort	600mm ht.	Potted	1000mm o.c.
SS	14	Sorbaria sorbifolia 'Sem'	Sem False Spirea	600mm ht.	Potted	1000mm o.c.
WC	195	Thuja occidentalis 'Clumps'	White Cedar Clumps	1200mm ht.	Bare Root	500mm o.c.
PERENNIALS						
KF	10	Calamagrostis 'Karl Forester'	Karl Forester Grass	250mm pot	Potted	1000 mm o.c.
OG	91	Helictotrichon sempervirens	Blue Oatgrass	250mm pot	Potted	800 mm o.c.