

**CLADDING LEGEND**

- 1 BRICK  
COLOUR: DARK GREY
- 2 FIBRE CEMENT PANEL  
COLOUR: DARK GREY
- 3 FIBRE CEMENT PANEL  
COLOUR: LIGHT GREY
- 4 STEEL CLADDING  
COLOUR: DARK GREY
- 5 METAL MESH  
COLOUR: SILVER
- 6 GLASS & ALUMINUM GUARD
- 7 PERFORATED METAL PANEL  
COLOUR: LIGHT GREY
- 8 PERFORATED METAL PANEL  
COLOUR: MEDIUM GREY
- 9 ACOUSTICAL LOUVERS
- 10 FRITTED GLASS SCREENS

- GENERAL ARCHITECTURAL NOTES:**
1. This drawing is the property of the Architect and may not be reproduced or used without the expressed consent of the Architect.
  2. Drawings are not to be scaled. The Contractor is responsible for checking and verifying all levels and dimensions and shall report all discrepancies to the Architect and obtain clarification prior to commencing work.
  3. Upon notice in writing, the Architect will provide written/graphic clarification or supplementary information regarding the intent of the Contract Documents.
  4. The Architectural drawings are to be read in conjunction with all other Contract Documents including Project Manuals and the Structural, Mechanical and Electrical Drawings.
  5. Positions of exposed or finished Mechanical or Electrical devices, fittings and fixtures are indicated on the Architectural Drawings. Locations shown on the Architectural Drawings shall govern over Mechanical and Electrical Drawings.
  6. These documents are not to be used for construction unless specifically noted for such purpose.



**REVISION RECORD**

REVISION	DATE	DESCRIPTION
1	2019-06-05	REISSUED FOR SITE PLAN CONTROL
2	2019-05-16	REISSUED FOR SITE PLAN CONTROL
3	2019-02-25	REISSUED FOR SITE PLAN CONTROL
4	2018-10-30	ISSUED FOR COORDINATION
5	2018-10-25	ISSUED FOR SITE PLAN CONTROL
6	2018-10-24	ISSUED FOR COORDINATION

**ISSUE RECORD**



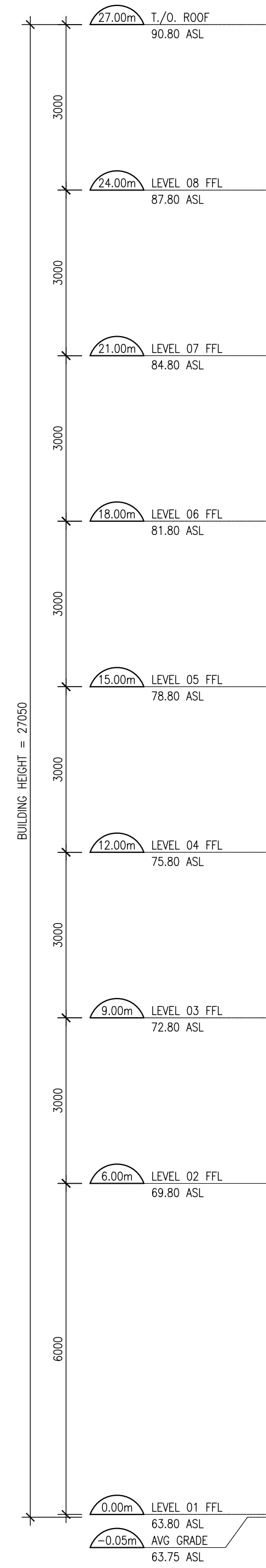
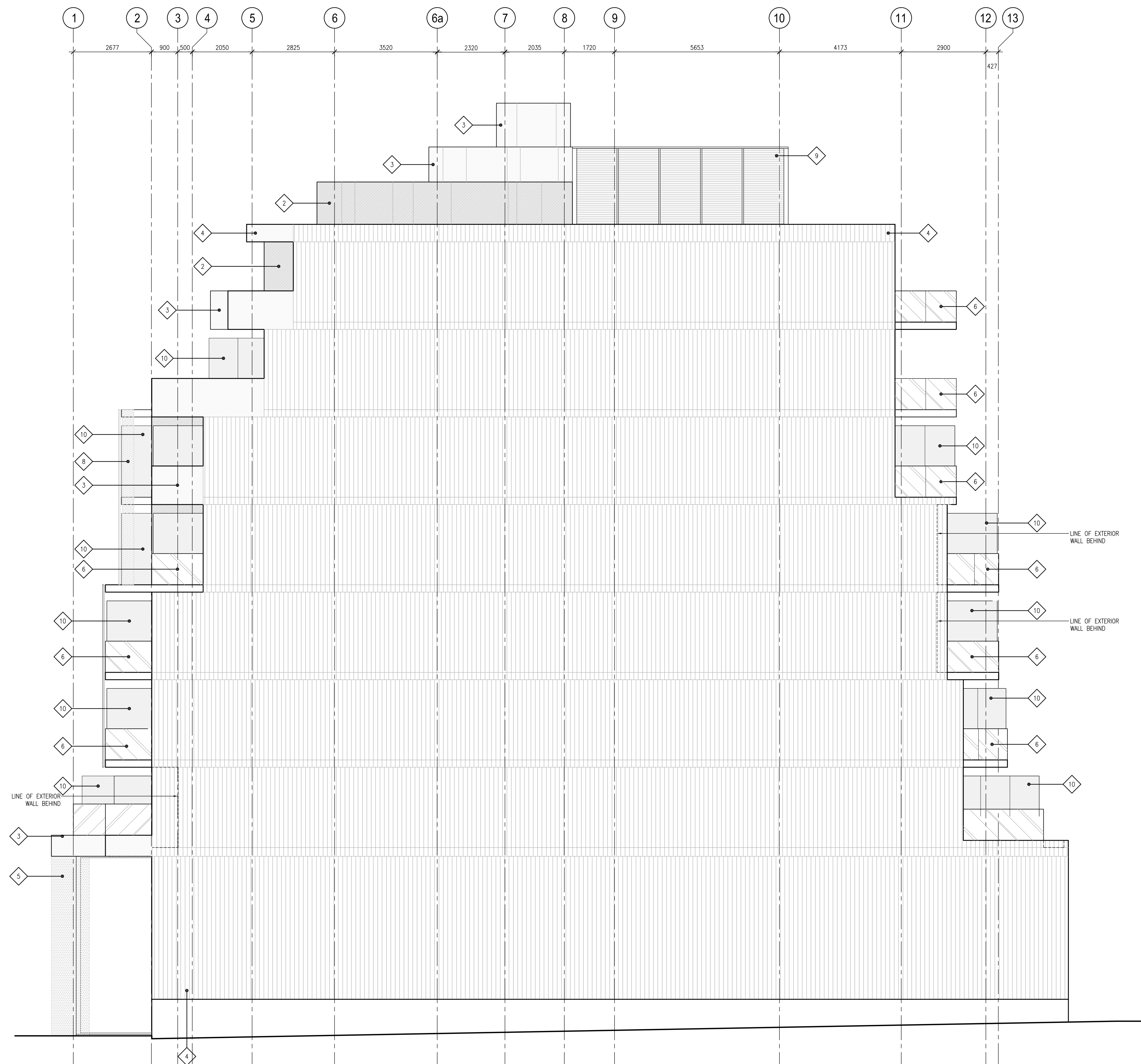
Project1 Studio Incorporated  
[613.884.3839] | mail@project1studio.ca

**16 HAMILTON**  
16 Hamilton Avenue N  
Ottawa, ON

PROJ	SCALE	DRAWN	REVIEWED
1823	NOTED	LB	RMK

**NORTH ELEVATION**

**A202**



**1 NORTH ELEVATION**  
A202 SCALE: 1:75