

DATE: November 4, 1984
PAUL A. RIDDELL
LAND REGISTRY FOR THE
ONTARIO LAND SURVEYOR
OTTAWA CARLETON NO. 4

REQUIRE THIS PLAN TO
BE DEPOSITED UNDER THE
REGISTRY ACT

METRIC DISTANCES SHOWN ON THIS PLAN ARE IN METRES AND
CAN BE CONVERTED TO FEET BY DIVIDING BY 0.3048

PLAN OF SURVEY OF
BLOCK 135 AND PARTS OF BLOCK 143
REGISTERED PLAN NO. 13
LOTS 4 TO 14 INCLUSIVE, LOTS 17 TO
20 INCLUSIVE, LOTS 29 & 30 PART
OF LOTS 27 & 28 AND PART OF HENRY
STREET (CLOSED BY BY-LAW 9474)
REGISTERED PLAN NO. 23
LOTS 2, 3 AND 4 EAST ROCHESTER STREET
LOTS 1 AND 2 SOUTH LYDIA STREET
SOUTH HALF OF LOTS 1 AND 2
NORTH LYDIA STREET AND LYDIA
STREET (CLOSED BY BY-LAW 58-82)
REGISTERED PLAN NO. 26
LOTS 1 TO 18 INCLUSIVE AND PLYMOUTH
STREET (CLOSED BY BY-LAW 185-85)
REGISTERED PLAN NO. 40
LOTS 1 TO 24 INCLUSIVE AND PAMILLA
STREET (CLOSED BY BY-LAW 179-57)
REGISTERED PLAN NO. 41
LOTS 1 TO 15 INCLUSIVE AND PART
OF ADELINE STREET
(CLOSED BY BY-LAW 179-57)
REGISTERED PLAN 34953
LOTS 2 TO 35 INCLUSIVE
LANE AND ADELINE
STREET (CLOSED BY BY-LAW 179-57)
REGISTERED PLAN NO. 148218
CITY OF OTTAWA
REGIONAL MUNICIPALITY OF OTTAWA-CARLETON
1984
PAUL A. RIDDELL O.L.S.

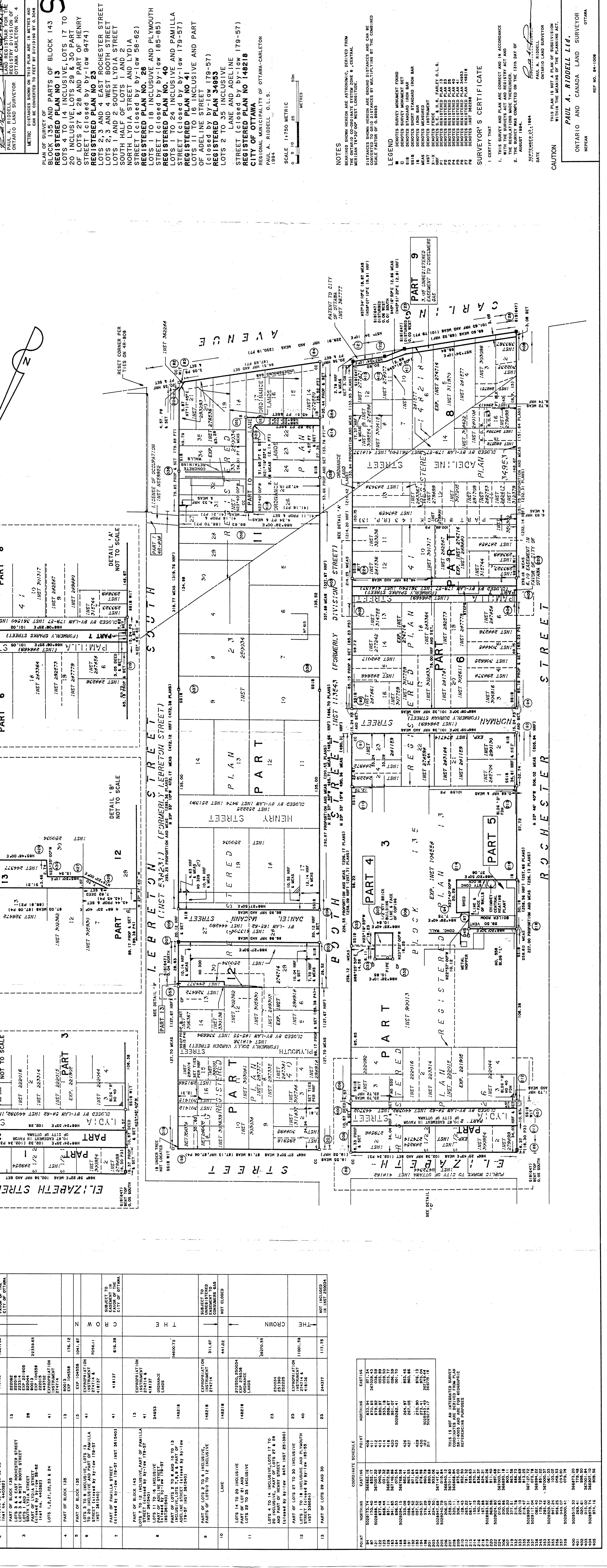
BEARINGS SHOWN HEREON ARE ASTROMONIC, DERIVED FROM
OF OTTAWA
MERIDIAN 78°30'00" WEST LONGITUDE.
SCALE FACTOR OF 0.9993

DISTANCES SHOWN HEREON ARE GROUND DISTANCES AND CAN BE
MULTIPLIED BY THE SCALE FACTOR OF 0.9993 TO OBTAIN
HORIZONTAL DISTANCES

LEGEND
DENOTES SURVEY MONUMENT FOUND
DENOTES SURVEY MONUMENT SET
DENOTES STANDARD IRON BAR
DENOTES SHORT STANDARD IRON BAR
DENOTES MEASURED
DENOTES INSTRUMENT
DENOTES FENCE
DENOTES REGISTERED PLAN 13
DENOTES REGISTERED PLAN 23
DENOTES REGISTERED PLAN 26
DENOTES REGISTERED PLAN 40
DENOTES REGISTERED PLAN 41
DENOTES REGISTERED PLAN 34953
DENOTES REGISTERED PLAN 148218
DENOTES INSTRUMENT 262886

I CERTIFY THAT
1. THIS SURVEY AND PLAN ARE CORRECT AND IN ACCORDANCE
WITH THE SURVEYS ACT AND REGISTRY ACT AND
THE REGULATIONS MADE THEREUNDER.
2. COMPLETED ON THE 13TH DAY OF
AUGUST 1984.

DATE: SEPTEMBER 23, 1984
PAUL A. RIDDELL
LAND REGISTRY FOR THE
ONTARIO LAND SURVEYOR
OTTAWA CARLETON NO. 4



SCHEDULE

LOT	DESCRIPTION	AREA (SQ. M)	OWNER	REMARKS
1	LOT 2 EAST INCLUSIVE STREET SOUTH HALF OF LOTS 1 AND 2 SOUTH LYDIA STREET	1673.16		
2	PART OF LYDIA STREET (CLOSED BY BY-LAW 58-82)	1081.55		SUBJECT TO EASEMENT IN FAVOR OF CITY OF OTTAWA
3	PART OF BLOCK 135 LOTS 3 & 4 EAST ROCHESTER STREET LOTS 3 & 4 WEST BOOTH STREET SOUTH LYDIA STREET (PART OF LYDIA STREET INST. NO. 440382)	2339.85		
4	LOTS 1, 2, 1, 2, 2, 3 & 4	176.12	Z	
5	PART OF BLOCK 135	1041.87	Z	
6	LOTS 3 TO 6 INCLUSIVE LOTS 13, 14, 15, 16, 17, 18, 19, 20, 21, 22, 23, 24, 25, 26, 27, 28, 29, 30 PART OF LYDIA STREET (CLOSED BY BY-LAW 179-57)	7056.11	O	
7	PART OF PAMILLA STREET (CLOSED BY BY-LAW 179-57)	616.29	O	SUBJECT TO EASEMENT IN FAVOR OF CITY OF OTTAWA
8	PART OF LYDIA STREET (CLOSED BY BY-LAW 179-57)	1482.18	T	
9	PART OF LOTS 2 TO 4 INCLUSIVE PARTS OF LOTS 10 TO 12 INCLUSIVE	1482.18	T	
10	LANE	411.02	T	NOT CLOSED
11	LOTS 14 TO 20 INCLUSIVE PART OF LOT 21 AND PART OF HEARY STREET (CLOSED BY BY-LAW 8474)	2870.85	C	
12	LOTS 4 TO 14 INCLUSIVE LOTS 17 TO 20 INCLUSIVE LOTS 27 & 28 AND PART OF HENRY STREET (CLOSED BY BY-LAW 9474)	10001.56	C	
13	PART OF LOTS 27 TO 30 INCLUSIVE LOTS 1 TO 18 INCLUSIVE AND PLYMOUTH STREET (CLOSED BY BY-LAW 185-85)	117.75	T	NOT INCLUDED IN INST. 262886

COORDINATE SCHEDULE

POINT	NORTHING	EASTING
84	5029133.74	36882.16
85	5029133.74	36882.16
86	5029133.74	36882.16
87	5029133.74	36882.16
88	5029133.74	36882.16
89	5029133.74	36882.16
90	5029133.74	36882.16
91	5029133.74	36882.16
92	5029133.74	36882.16
93	5029133.74	36882.16
94	5029133.74	36882.16
95	5029133.74	36882.16
96	5029133.74	36882.16
97	5029133.74	36882.16
98	5029133.74	36882.16
99	5029133.74	36882.16
100	5029133.74	36882.16

DETAIL 'A'
NOT TO SCALE

DETAIL 'B'
NOT TO SCALE

DETAIL 'C'
NOT TO SCALE

THIS IS NOT AN INTERESTED SURVEY
COORDINATES ARE DERIVED FROM PLAN
58-1400 AND ARE GEODESIC
REFERENCING PURPOSES