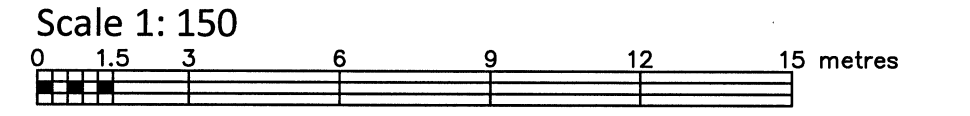


PART OF LOTS 3 AND 4 REGISTERED PLAN 58 CITY OF OTTAWA

FARLEY, SMITH & DENIS SURVEYING LTD. 2018



Metric Note Distances and coordinates on this plan are in metres and can be converted to feet by dividing by 0.3048.

Bearing Note Bearings are astronomic and are referred to the westerly limit of Hamilton Avenue having a bearing of N 20° 51' 00" W as shown on Registered Plan 157.

For bearing comparisons, a rotation of 2°11'55" clockwise was applied to bearings on Plan P6.

Elevation Notes 1. Elevations shown are geodetic and are referred to Geodetic Datum CGVD-1928 :1978. 2. Elevations derived from a Site Benchmark having a published elevation of 64.86m. (FSD Ref. J-1191) 3. It is the responsibility of the user of this information to verify that the job benchmark has not been altered or disturbed and that its relative elevation and description agrees with the information shown on this drawing.

Utility Notes 1. This drawing cannot be accepted as acknowledging all of the utilities and it will be the responsibility of the user to contact the respective utility authorities for confirmation. 2. Only visible surface utilities were located. 3. Underground utility data derived from City of Ottawa DWG: Plan no. 3433, Sheets 2 and 3 of 8. 4. Sanitary and storm sewer grades and inverts were derived from field measurement. 5. A field location of underground plant by the pertinent utility authority is mandatory before any work involving breaking ground, probing, excavating etc.

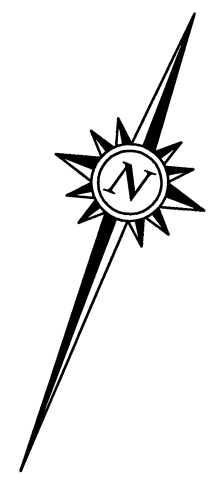
Notes & Legend table listing symbols for monuments, bearings, elevations, and utilities.

ASSOCIATION OF ONTARIO LAND SURVEYORS PLAN SUBMISSION FORM 2062427. Includes a logo and a disclaimer: 'THIS PLAN IS NOT VALID UNLESS IT IS AN EMBOSSED ORIGINAL COPY ISSUED BY THE SURVEYOR in accordance with Regulation 1026, Section 29 (3).'

WARNING: NO PERSON MAY COPY, REPRODUCE, DISTRIBUTE OR ALTER THIS PLAN IN WHOLE OR IN PART WITHOUT THE WRITTEN PERMISSION OF FARLEY, SMITH & DENIS SURVEYING LTD. © FARLEY, SMITH & DENIS SURVEYING LTD., 2018.

Surveyor's Certificate I certify that: 1. This survey and plan are correct and in accordance with the Surveys Act, the Surveyors Act and the Regulations made under them. 2. The survey was completed on the 20th day of September, 2018. Date: Sept 24/18. Signature: Jamie Leslie, Ontario Land Surveyor.

FARLEY, SMITH & DENIS SURVEYING LTD. ONTARIO LAND SURVEYORS CANADA LAND SURVEYORS 190 COLONNADE ROAD, OTTAWA, ONTARIO K2E 7J5 TEL (613) 727-8226 FAX (613) 727-1826



LOT PART 1 PLAN 1320 (P2)&Set 1.81

ARMSTRONG STREET (Formerly James Street)

LOT 1322 LOT 1326

LOT 1339

LOT 1341 LOT 1343

LOT 1345

LOT 1347

LOT 1345

LOT 1345

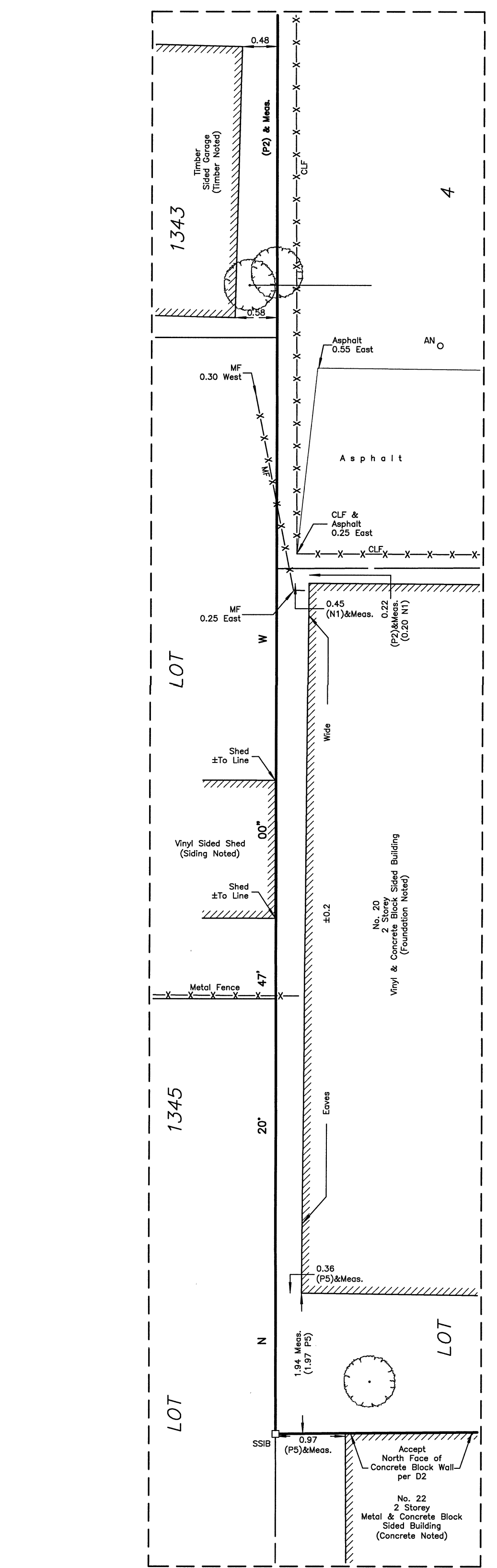
LOT 1345

LOT 1345

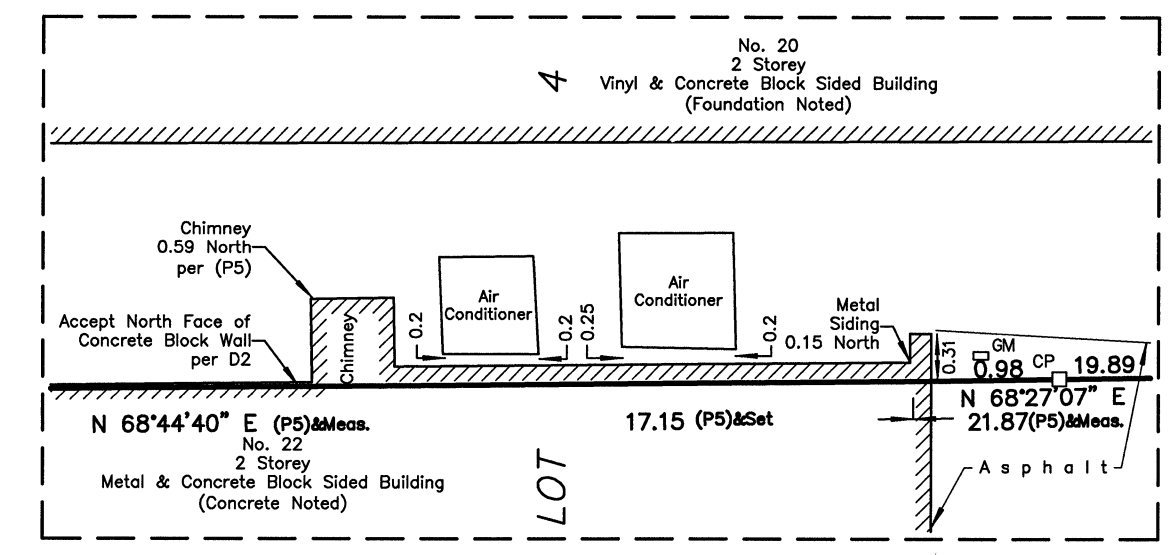
LOT 1345

LOT 1345

LOT 1347



DETAIL A Scale 1:50



DETAIL B Scale 1:50

