

Distances shown on this plan are ground distances and can be converted to grid distances by multiplying by the combined scale factor of 0.999923.

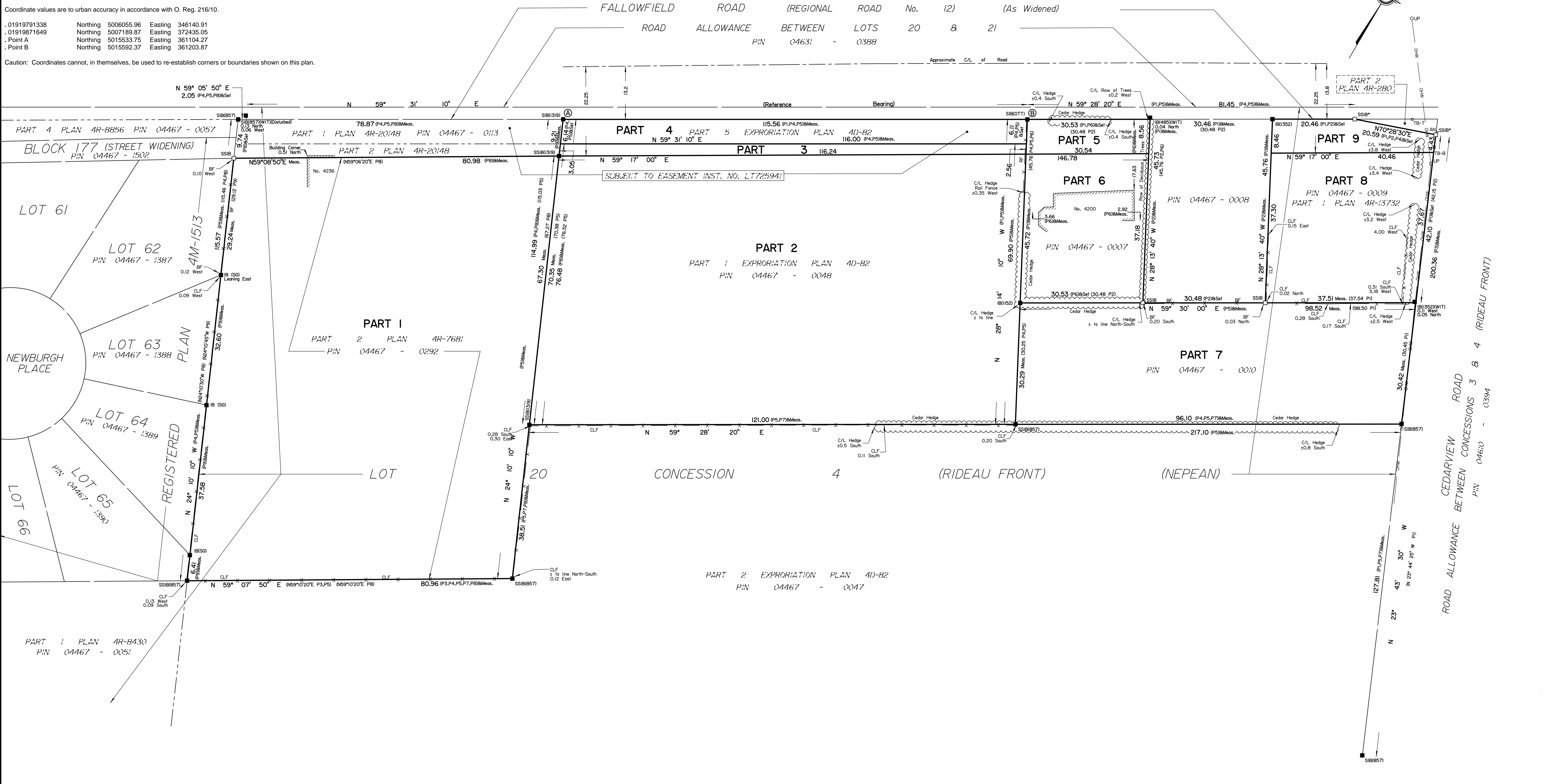
Bearings are grid, derived from Can-Net 2016 Real Time Network GPS observations on reference points A and B, shown hereon, having a bearing of N59°31'10"E and are referenced to Specified Control Points 01919791338 and 01919871649, MTM Zone 9 (76°30' West Longitude) NAD-83 (original).

Coordinates are derived from Can-Net 2016 Real Time Network GPS observations referenced to Specified Control Points 01919791338 and 01919871649, MTM Zone 9 (76°30' West Longitude) NAD-83 (original).

Coordinate values are to urban accuracy in accordance with O. Reg. 216/10.

.01919791338	Northing	5006055.96	Easting	346140.91
.01919871649	Northing	5007189.87	Easting	372435.05
.Point A	Northing	5015533.75	Easting	361104.27
.Point B	Northing	5015592.37	Easting	361203.87

Caution: Coordinates cannot, in themselves, be used to re-establish corners or boundaries shown on this plan.



I REQUIRE THIS PLAN TO BE DEPOSITED UNDER THE LAND TITLES ACT.
DATE: _____

PLAN 4R-
RECEIVED AND DEPOSITED
DATE: _____

V. ANDREW SHELP
ONTARIO LAND SURVEYOR

REPRESENTATIVE FOR
LAND REGISTRAR FOR THE
LAND TITLES DIVISION OF
OTTAWA-CARLETON NO. 4.

SCHEDULE			
PART	LOT	CONCESSION	PIN
1			ALL OF 04467-0292
2, 3, 4			ALL OF 04467-0048
5, 6	PART OF 20	4 (RIDEAU FRONT NEPEAN)	ALL OF 04467-0007
7			ALL OF 04467-0010
8, 9			ALL OF 04467-0009

Part 6: Subject to Easement, Inst. CR725941.

PLAN OF SURVEY OF
PART OF LOT 20
CONCESSION 4 (RIDEAU FRONT)
Geographic Township of Nepean
CITY OF OTTAWA
Surveyed by Annis, O'Sullivan, Vollebek Ltd.

Scale 1 : 500

Metric
DISTANCES AND COORDINATES SHOWN ON THIS PLAN
ARE IN METRES AND CAN BE CONVERTED TO FEET BY
DIVIDING BY 0.3048.

Surveyor's Certificate
I CERTIFY THAT:
1. This survey and plan are correct and in accordance with the Surveys Act, the Surveyors Act and the Land Titles Act and the regulations made under them.
2. The survey was completed on the 8th day of March, 2018.

Date: _____ V. Andrew Shelp
Ontario Land Surveyor

Notes & Legend

—□	Denotes	Survey Monument Planted
—■		Survey Monument Found
SIB		Standard Iron Bar
SSIB		Short Standard Iron Bar
SSIB*		Short Standard Iron Bar (0.3)
IB		Iron Bar
(WIT)		Witness
(AOG)		Annis, O'Sullivan, Vollebek Ltd.
Mess:		Measured
(P1)		Plan 4R-13732
(P2)		Plan 4R-280
(P3)		Plan 4R-8430
(P4)		Plan 4R-7681
(P5)		Plan 4D-82
(P6)		(1236) Plan June 25, 1991
(P7)		(1319) Plan December 23, 1993
(P8)		Plan 4R-20148
(P9)		Registered Plan 4M-1513
CLF		Chain Link Fence
BF		Board Fence
RF		Rail Fence
C/L		Centerline
OHW		Overhead Wire
UP		Utility Pole
□ TB-B		Bell Terminal Box

ANNIS, O'SULLIVAN, VOLLEBEK LTD.
14 Concourse Gate, Suite 500
Nepean, Ont. K2E 7S6
Phone: (613) 727-0850 / Fax: (613) 727-1079
Email: Nepean@annisov.com

Ontario Land Surveyors Job No. 18642-18 Phoenix P/L-20 C4 RF NP R F AE

Y:\2018\18642-18\FINAL\18642-18 Phoenix P/L-20 C4 RF NP R F.dwg, 18/03/2018 8:03:30 AM