

CLIENT: AVENU DEVELOPMENTS INC.

CONSULTANTS

ARCHITECTS: PROJECT 1 STUDIO  
300 - 245 St. Patrick Street, Ottawa, ON K1N 6K6  
Tel: (613) 591-2500

SURVEYORS: FAIRHALL, MOFFATT AND WOODLAND LTD.  
655 Terry Fox Dr., Ottawa, ON K2L 6K6  
Tel: (613) 591-2500

CIVIL ENGINEERS: T.L. MAK ENGINEERING CONSULTANTS LTD.  
1433 Woodbine Drive, Ottawa, ON K1C 6Z7  
Tel: (613) 837-5515

EXISTING TREE LIST

KEY	QTY	BOTANICAL NAME	COMMON NAME	SIZE	CONDITION	REMARKS
<b>TREES</b>						
PG	1	<i>Picea glauca</i>	White Spruce	300mm ø	GOOD	See Plan
PR	1	<i>Pinus resinosa</i>	Red Pine	200mm ø	GOOD	See Plan
TO	1	<i>Thuja occidentalis</i>	White Cedar	400mm ø	GOOD	See Plan

PROPOSED PLANT LIST

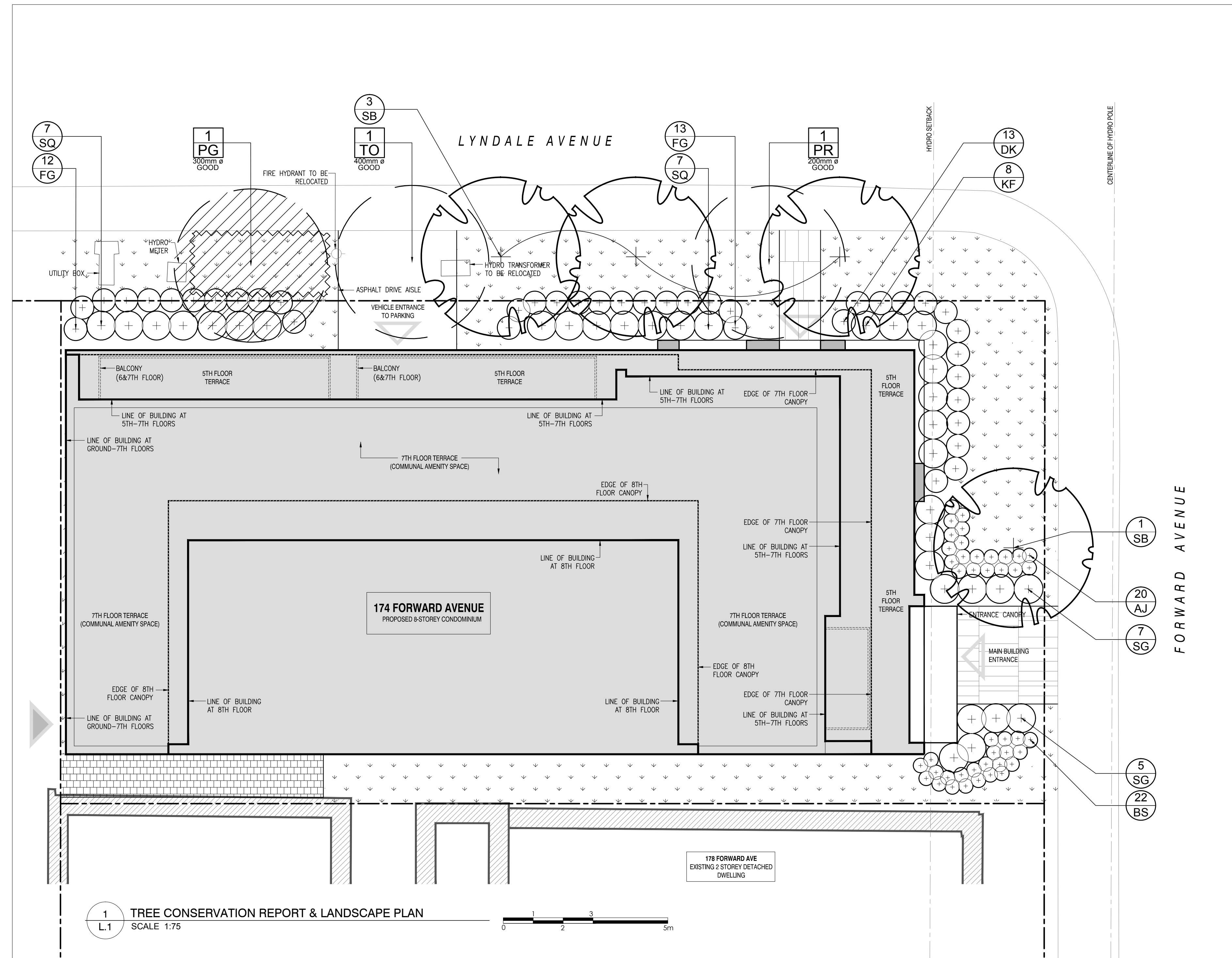
KEY	QTY	BOTANICAL NAME	COMMON NAME	SIZE	CONDITION	REMARKS
<b>TREES</b>						
SB	4	<i>Amelanchier canadensis</i>	Serviceberry	60mm ø	B&B	See Plan
<b>PERENNIALS</b>						
AJ	20	<i>Sedum 'Autumn Joy'</i>	Autumn Joy Stonecrop	100mm Pot.	Potted	Space 400mm O.C.
BS	22	<i>Rudbeckia fulgida 'Goldsturm'</i>	Yellow Coneflower	100mm Pot.	Potted	Space 400mm O.C.
DK	13	<i>Calamagrostis brachytricha</i>	Korean Feather Reed Grass	250mm Pot.	Potted	Space 600mm O.C.
FG	25	<i>Pennisetum alopecuroides 'Hameln'</i>	Hameln Fountaingrass	100mm Pot.	Potted	Space 600mm O.C.
KF	8	<i>Calamagrostis x acutiflora 'Karl Foerster'</i>	Feather Reed Grass	250mm Pot.	Potted	Space 800mm O.C.
SG	12	<i>Panicum virgatum 'Heavy Metal'</i>	Heavy Metal Switchgrass	250mm Pot.	Potted	Space 800mm O.C.
SQ	14	<i>Panicum virgatum 'Squaw'</i>	Squawgrass	250mm Pot.	Potted	Space 800mm O.C.

GENERAL NOTES:

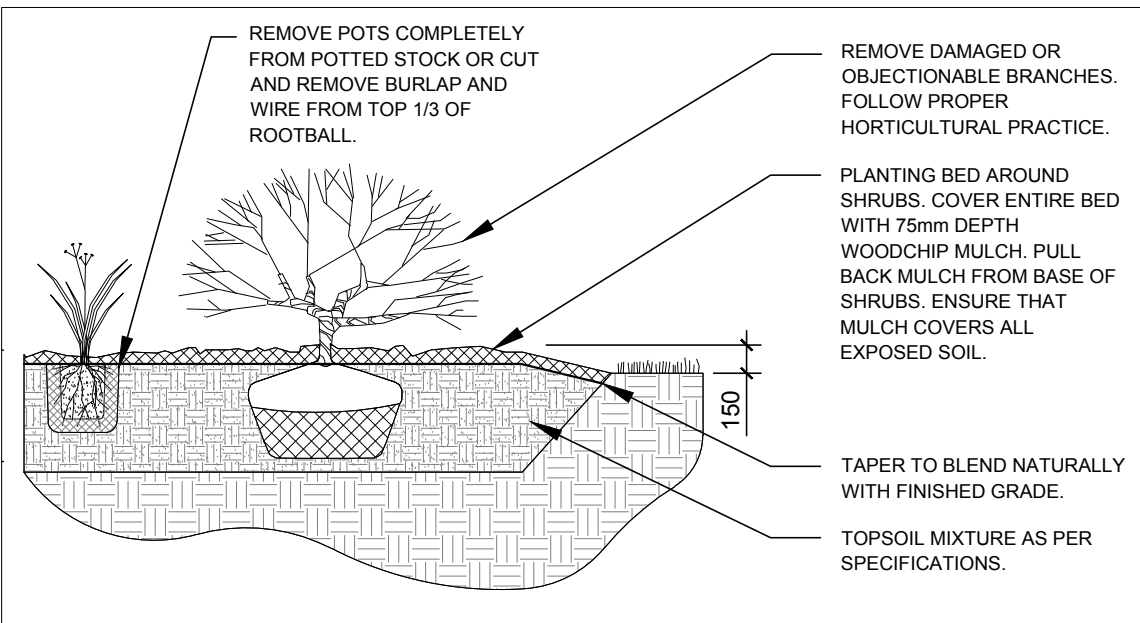
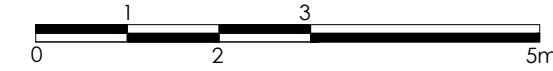
- It is the responsibility of the appropriate contractor or official to report any errors, omissions or discrepancies on this plan with actual site conditions to the Landscape Architect before proceeding with construction.
- The contractor is to notify all utility companies and authorities prior to any excavation and ascertain locations of underground services.
- The contractor is to reinstate all areas and items damaged as a result of construction activity.
- The contractor is to comply with all pertinent codes and by-laws.
- The contractor is to maintain a positive surface run-off throughout the entire construction period.
- The Landscape Architect is not responsible for subsurface conditions.
- The contractor is to identify all existing trees to remain on site with the Landscape Architect prior to construction.
- The contractor is to stake the proposed location of all plant material in conjunction with the Landscape Architect prior to excavation.
- Minimum distances for selected deciduous trees are as follows:
  - Building Foundations 7.5m
  - Sidewalks 1.5m
  - Public Streets 2.5m
  - Underground Infrastructure 2.0m
- All trees within 1m of underground utility trenches are to be excavated by hand.
- Remove all protective wrapping from tree trunks after installation.
- Staking of trees shall only be performed if necessary.
- Ensure that mulch is pulled back a min. distance of 75mm from base of tree trunk.

LEGEND

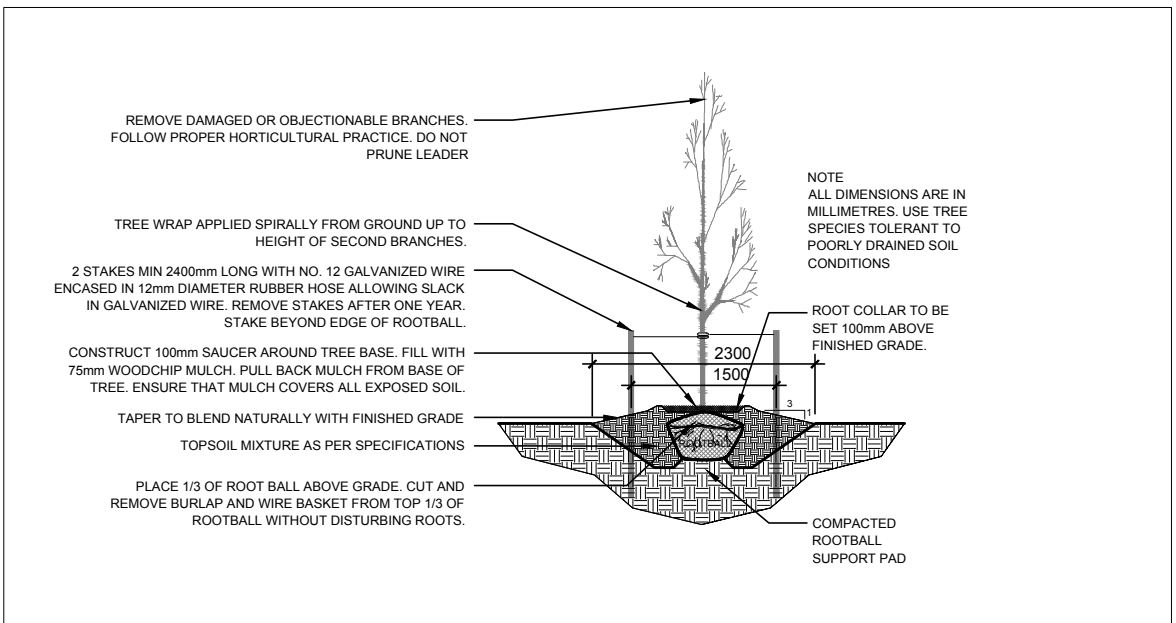
- EXISTING TREE TO REMAIN
- TREE PROTECTION FENCE
- PROPOSED DECIDUOUS TREE
- PROPOSED PERENNIAL
- PROPOSED SOD
- PROPOSED PAVERS



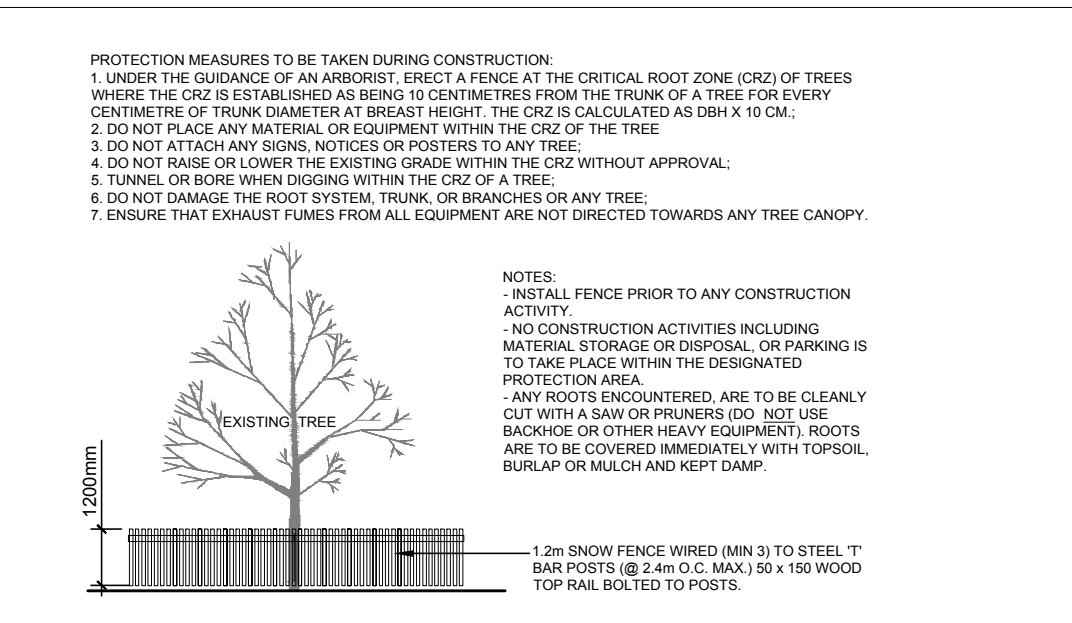
1 TREE CONSERVATION REPORT & LANDSCAPE PLAN  
SCALE: 1:75



2 SHRUB/PERENNIAL PLANTING  
SCALE: NTS



3 DECIDUOUS TREE PLANTING  
SCALE: NTS



4 TREE PROTECTION FENCE  
SCALE: NTS

1	ISSUED FOR DISCUSSION AND REVIEW	04/25/2017	ML	JL
No.	Issue	Date	ML	JL
		MM/DD/YY	DR	CK

JAMES B. LENNOX & ASSOCIATES INC.  
LANDSCAPE ARCHITECTS  
3333 CARLING AVE. OTTAWA, ONTARIO K2H 5A8  
Tel: (613) 722-2168 Fax: (866) 343-3942

PROJECT  
174 FORWARD AVENUE CONDOS  
174 FORWARD AVENUE, OTTAWA ONTARIO

DRAWING  
TREE CONSERVATION REPORT AND  
LANDSCAPE PLAN

STAMP: ASSOCIATION OF LANDSCAPE ARCHITECTS OF ONTARIO MEMBER  
SCALE: 1:75  
START DATE: FEBRUARY 2017  
PROJECT NO.

PROJECT NORTH  
DRAWING NO. L.1  
PLOT SIZE ARCH-D