

Client			
Revision			
No	Description	Appr.	Date
1	SITE PLAN CONTROL	E.P.	06/06/2017
2	SITE PLAN CONTROL	S.G.	26/09/2017

- Note :**
1. It is the responsibility of the appropriate contractor or official to report any errors, omissions or discrepancies on this plan with actual site conditions to the Landscape Architect before proceeding with construction.
  2. The Contractor must not cut down any existing vegetation without the approval of the Project Director.
  3. Implantation of the works on site must be approved by the Project Director.
  4. The Contractor must use the Cad file for implantation of all work. The contractor must verify the amounts specified in the schedule and notify the landscape architect of any errors, omissions or contradictions before the close of the bid.
  5. Existing grades indicated on the plan come from the survey provided by the owner.
  6. The contractor is to notify all utility companies and authorities prior to any excavation and ascertain locations of underground services.
  7. The contractor is to reinstate all areas and items damaged as a result of construction activity.
  8. The contractor is to comply with all pertinent codes and by-laws.
  9. The contractor is to maintain a positive surface run-off throughout the entire construction period.
  10. The Landscape Architect is not responsible for subsurface conditions.
  11. The contractor is to stake the proposed location of all plant material in conjunction with the Landscape Architect prior to excavation.
  9. All trees within 1m of underground utility trenches are to be excavated by hand.
  10. Remove all protective wrapping from tree trunks after installation.
  11. Staking of trees shall only be performed if necessary.
  12. Ensure that mulch is pulled back a min. distance of 75mm from base of tree trunk.

APPROVED ☐

REFUSED ☐

THIS \_\_\_\_ DAY OF \_\_\_\_\_, 20\_\_

DOUGLAS JAMES, MCIP, RPP  
(A)MANAGER, DEVELOPMENT REVIEW CENTRAL  
PLANNING, INFRASTRUCTURE & ECONOMIC  
DEVELOPMENT DEPARTMENT, CITY OF OTTAWA

**PROJET | PAYSAGE**  
24 Mont-Royal Ouest, Suite 801  
Montréal, QC H2T 2S2  
514 849 7700

Professional seal

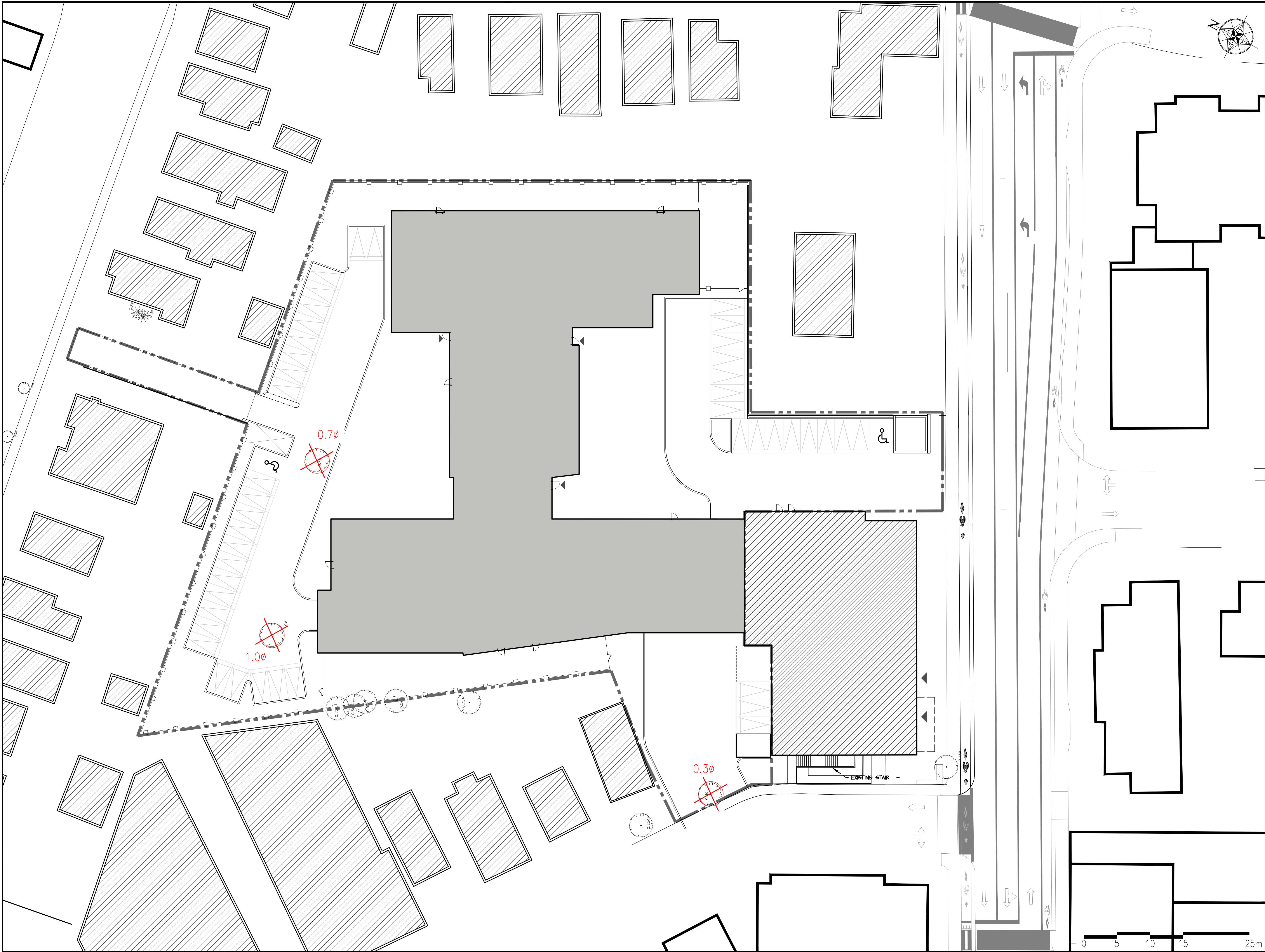
Project name  
333 MONTREAL ROAD  
Ottawa, Ontario

Drawing title  
SITE PLAN

Drawn by: B.DALLAS	LA-10
Designed by: B.DALLAS / S.GALLANT	
Date: MAY 2017	
16-427	







Client

Revision			
No	Description	Appr.	Date
1	SITE PLAN CONTROL	E.P.	06/06/2017
2	SITE PLAN CONTROL	S.G.	26/09/2017

LEGEND

TREE TO BE REMOVED

Note :

1. It is the responsibility of the appropriate contractor or official to report any errors, omissions or discrepancies on this plan with actual site conditions to the Landscape Architect before proceeding with construction.
2. The Contractor must not cut down any existing vegetation without the approval of the Project Director.
3. Implantation of the works on site must be approved by the Project Director.
4. The Contractor must use the Cad file for implantation of all work.The contractor must verify the amounts specified in the schedule and notify the landscape architect of any errors, omissions or contradictions before the close of the bid.
5. Existing grades indicated on the plan come from the survey provided by the owner.
6. The contractor is to notify all utility companies and authorities prior to any excavation and ascertain locations of underground services.
7. The contractor is to reinstate all areas and items damaged as a result of construction activity.
8. The contractor is to comply with all pertinent codes and by-laws.
9. The contractor is to maintain a positive surface run-off throughout the entire construction period.
10. The Landscape Architect is not responsible for subsurface conditions.
11. The contractor is to stake the proposed location of all plant material in conjunction with the Landscape Architect prior to excavation.
9. All trees within 1m of underground utility trenches are to be excavated by hand.
- 10.Remove all protective wrapping from tree trunks after installation.
- 11.Staking of trees shall only be performed if necessary.
- 12.Ensure that mulch is pulled back a min. distance of 75mm from base of tree trunk.

APPROVED ☐ REFUSED ☐

THIS \_\_\_\_ DAY OF \_\_\_\_\_, 20\_\_

DOUGLAS JAMES, MCIP, RPP  
(A)MANAGER, DEVELOPMENT REVIEW CENTRAL  
PLANNING, INFRASTRUCTURE & ECONOMIC  
DEVELOPMENT DEPARTMENT, CITY OF OTTAWA

**PROJET | PAYSAGE**  
24 Mont-Royal Ouest, Suite 801  
Montréal, QC, H2T 2S2  
514 849 7700

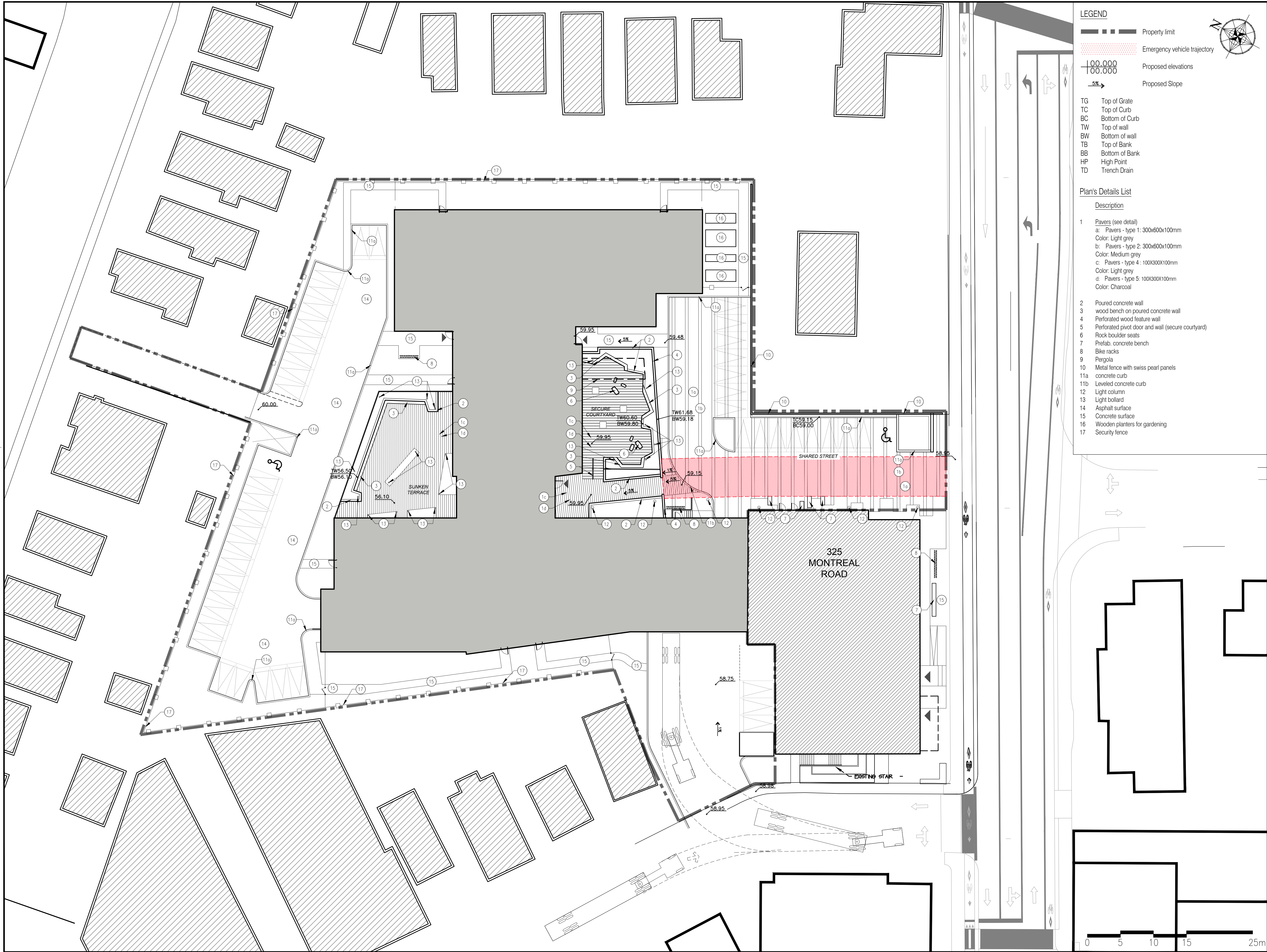
Professional seal

Project name  
333 MONTREAL ROAD  
Ottawa, Ontario

Drawing title  
TREE REMOVAL PLAN  
SCALE 1:250

Drawn by: B.DALLAS	LA-20
Designed by:	
B.DALLAS / S.GALLANT	
Date : MAY 2017	
16-427	





**LEGEND**

- Property limit
- Emergency vehicle trajectory
- Proposed elevations
- Proposed Slope

TG Top of Grate  
TC Top of Curb  
BC Bottom of Curb  
TW Top of wall  
BW Bottom of wall  
TB Top of Bank  
BB Bottom of Bank  
HP High Point  
TD Trench Drain

- Plan's Details List**
- Description
- Pavers (see detail)
    - a: Pavers - type 1: 300x600x100mm  
Color: Light grey
    - b: Pavers - type 2: 300x600x100mm  
Color: Medium grey
    - c: Pavers - type 4: 100x300x100mm  
Color: Light grey
    - d: Pavers - type 5: 100x300x100mm  
Color: Charcoal
  - Poured concrete wall
  - wood bench on poured concrete wall
  - Perforated wood feature wall
  - Perforated pivot door and wall (secure courtyard)
  - Rock boulder seats
  - Prefab. concrete bench
  - Bike racks
  - Pergola
  - Metal fence with swiss pearl panels
  - concrete curb
  - Leveled concrete curb
  - Light column
  - Light bollard
  - Asphalt surface
  - Concrete surface
  - Wooden planters for gardening
  - Security fence

Client			
Revision			
No	Description	Appr.	Date
1	SITE PLAN CONTROL	E.P.	06/06/2017
2	SITE PLAN CONTROL	S.G.	26/09/2017

- Note :**
- It is the responsibility of the appropriate contractor or official to report any errors, omissions or discrepancies on this plan with actual site conditions to the Landscape Architect before proceeding with construction.
  - The Contractor must not cut down any existing vegetation without the approval of the Project Director.
  - Implantation of the works on site must be approved by the Project Director.
  - The Contractor must use the Cad file for implantation of all work. The contractor must verify the amounts specified in the schedule and notify the landscape architect of any errors, omissions or contradictions before the close of the bid.
  - Existing grades indicated on the plan come from the survey provided by the owner.
  - The contractor is to notify all utility companies and authorities prior to any excavation and ascertain locations of underground services.
  - The contractor is to reinstate all areas and items damaged as a result of construction activity.
  - The contractor is to comply with all pertinent codes and by-laws.
  - The contractor is to maintain a positive surface run-off throughout the entire construction period.
  - The Landscape Architect is not responsible for subsurface conditions.
  - The contractor is to stake the proposed location of all plant material in conjunction with the Landscape Architect prior to excavation.
  - All trees within 1m of underground utility trenches are to be excavated by hand.
  - Remove all protective wrapping from tree trunks after installation.
  - Staking of trees shall only be performed if necessary.
  - Ensure that mulch is pulled back a min. distance of 75mm from base of tree trunk.

APPROVED ☐ REFUSED ☐

THIS \_\_\_\_ DAY OF \_\_\_\_\_, 20\_\_

DOUGLAS JAMES, MCIP, RPP  
(A)MANAGER, DEVELOPMENT REVIEW CENTRAL  
PLANNING, INFRASTRUCTURE & ECONOMIC  
DEVELOPMENT DEPARTMENT, CITY OF OTTAWA

**PROJET | PAYSAGE**  
24 Mont-Royal Ouest, Suite 801  
Montréal, QC, H2T 2S2  
514 849 7700

Professional seal

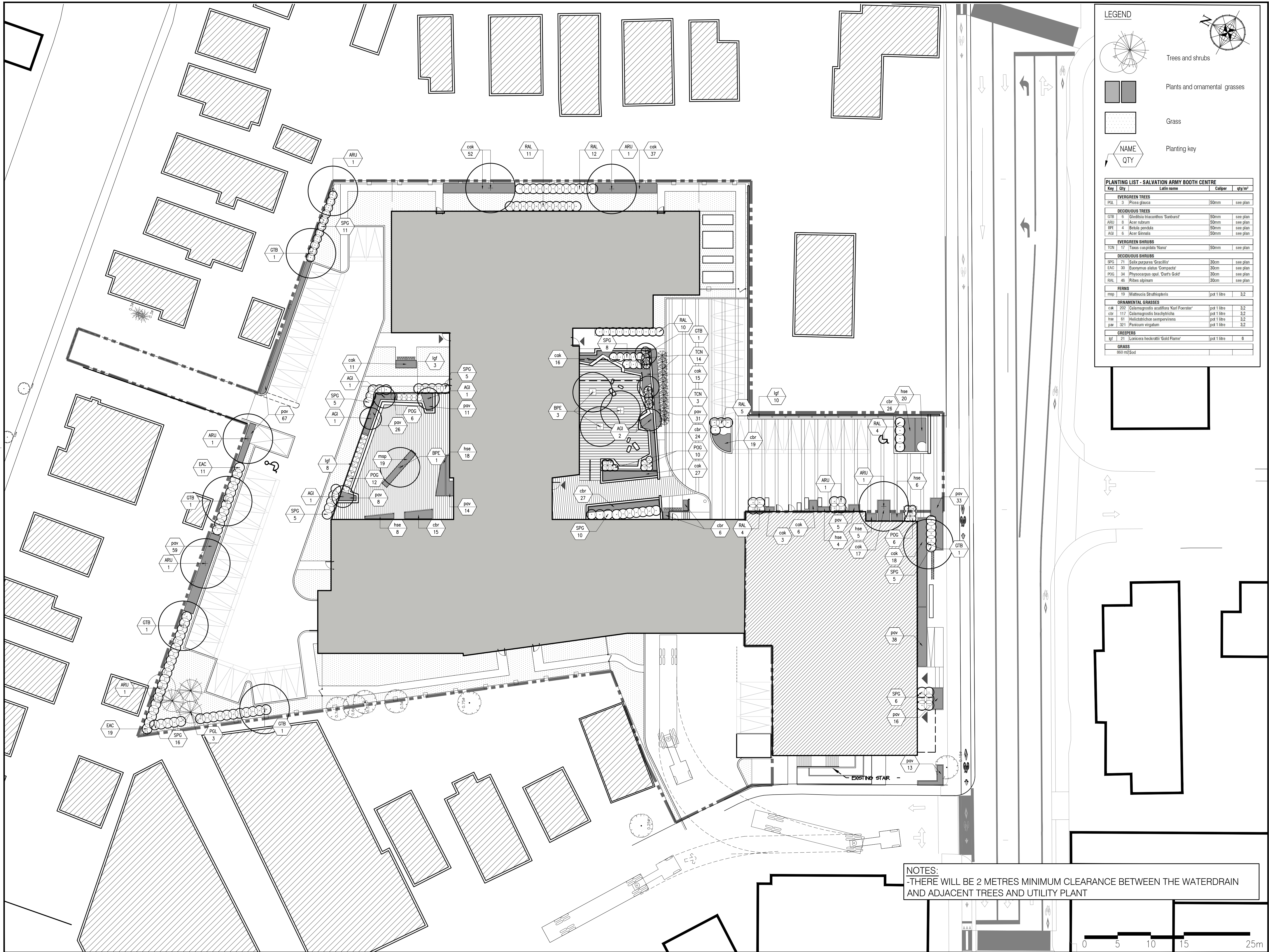
Project name  
333 MONTREAL ROAD  
Ottawa, Ontario

Drawing title  
GRADING AND DESCRIPTION PLAN

Drawn by:  
B.DALLAS  
Designed by:  
B.DALLAS / S.GALLANT  
Date:  
MAY 2017  
16-427

Sheet No.  
LA-30





LEGEND

Trees and shrubs

Plants and ornamental grasses

Grass

NAME

QTY

Planting key

PLANTING LIST - SALVATION ARMY BOOTH CENTRE

Key	Qty	Latin name	Caliper	qty/m²
EVERGREEN TREES				
PGL	3	Picea glauca	50mm	see plan
DECIDUOUS TREES				
GTB	6	Gleditsia thurcathos 'Sunburst'	50mm	see plan
ARU	6	Acer rubrum	50mm	see plan
BPE	4	Betula pendula	50mm	see plan
AGI	6	Acer Ginnala	50mm	see plan
EVERGREEN SHRUBS				
TCN	17	Taxus cuspidata 'Nana'	50mm	see plan
DECIDUOUS SHRUBS				
SPG	70	Saxifraga purpurea 'Striella'	30cm	see plan
EAC	30	Euonymus alatus 'Comptona'	30cm	see plan
POG	34	Physocarpus opul. 'Darts Gold'	30cm	see plan
RAL	46	Ribes alpinum	30cm	see plan
FERNS				
map	19	Matteuccia Struthiopteris	pot 1 litre	3,2
ORNAMENTAL GRASSES				
cak	202	Calamagrostis canadensis 'Karl Foerster'	pot 1 litre	3,2
cbr	117	Calamagrostis brachytricha	pot 1 litre	3,2
hse	61	Helleborichon sempervirens	pot 1 litre	3,2
pav	321	Panicum virgatum	pot 1 litre	3,2
CREEPERS				
lgl	21	Lamium heckrottii 'Gold Flame'	pot 1 litre	6
GRASS				
	800	rd Sod		

Client

Revision		Appr.	Date
1	SITE PLAN CONTROL	E.P.	09/06/2017
2	SITE PLAN CONTROL	S.G.	26/09/2017

Note :

- It is the responsibility of the appropriate contractor or official to report any errors, omissions or discrepancies on this plan with actual site conditions to the Landscape Architect before proceeding with construction.
- The Contractor must not cut down any existing vegetation without the approval of the Project Director.
- Implantation of the works on site must be approved by the Project Director.
- The Contractor must use the Cad file for implementation of all work. The contractor must verify the amounts specified in the schedule and notify the landscape architect of any errors, omissions or contradictions before the close of the bid.
- Existing grades indicated on the plan come from the survey provided by the owner.
- The contractor is to notify all utility companies and authorities prior to any excavation and ascertain locations of underground services.
- The contractor is to reinstate all areas and items damaged as a result of construction activity.
- The contractor is to comply with all pertinent codes and by-laws.
- The contractor is to maintain a positive surface run-off throughout the entire construction period.
- The Landscape Architect is not responsible for subsurface conditions.
- The contractor is to stake the proposed location of all plant material in conjunction with the Landscape Architect prior to excavation.
- All trees within 1m of underground utility trenches are to be excavated by hand.
- Remove all protective wrapping from tree trunks after installation.
- Staking of trees shall only be performed if necessary.
- Ensure that mulch is pulled back a min. distance of 75mm from base of tree trunk.

APPROVED ☐ REFUSED ☐

THIS \_\_\_\_ DAY OF \_\_\_\_\_, 20\_\_

DOUGLAS JAMES, MCIP, RPP  
(A)MANAGER, DEVELOPMENT REVIEW CENTRAL  
PLANNING, INFRASTRUCTURE & ECONOMIC  
DEVELOPMENT DEPARTMENT, CITY OF OTTAWA

PROJET | PAYSAGE

24 Mont-Royal Ouest, Suite 801  
Montréal, QC, H2T 2S2  
514 849 7700

Professional seal

Project name

333 MONTREAL ROAD  
Ottawa, Ontario

Drawing title

PLANTING PLAN

Drawn by:

B.DALLAS

Designed by:

B.DALLAS / S.GALLANT

Date:

MAY 2017

Sheet No.

LA-40

16-427

NOTES:

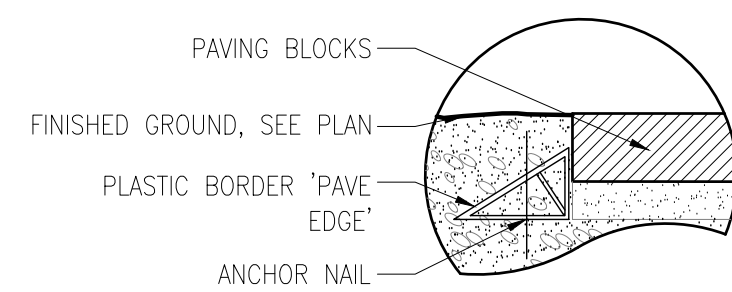
-THERE WILL BE 2 METRES MINIMUM CLEARANCE BETWEEN THE WATERDRAIN AND ADJACENT TREES AND UTILITY PLANT

SCALE 1:250

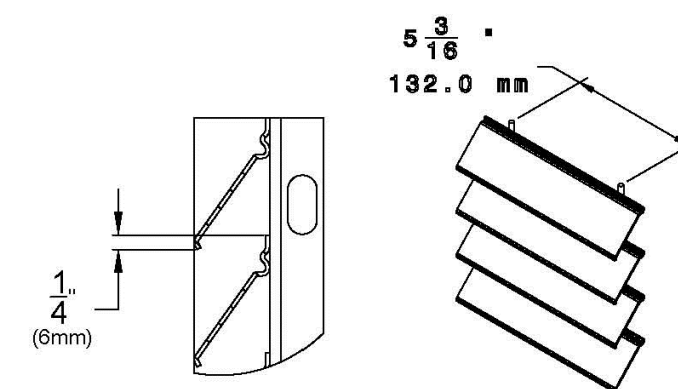
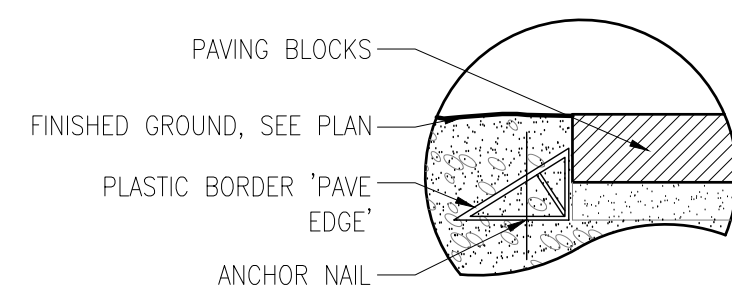
0 5 10 15 25m

FILE NUMBER D07-12-17-0077





Dimensions des poteaux de porte		
Panneau	Ouverture	Poteau
78"	3' à 4'	3" x 3" 11GA
78"	5' et plus	4" x 4" 11GA ou 6" x 6" x 3/16"

FENCE

 LIGHT DUTY PAVERS  
Scale 1:10

APPROVED ☐ REFUSED ☐

THIS \_\_\_\_\_ DAY OF \_\_\_\_\_, 20\_\_\_\_

\_\_\_\_\_  
DOUGLAS JAMES, MCIP, RPP  
(A)MANAGER, DEVELOPMENT REVIEW CENTRAL  
PLANNING, INFRASTRUCTURE & ECONOMIC  
DEVELOPMENT DEPARTMENT, CITY OF OTTAWA

A-50