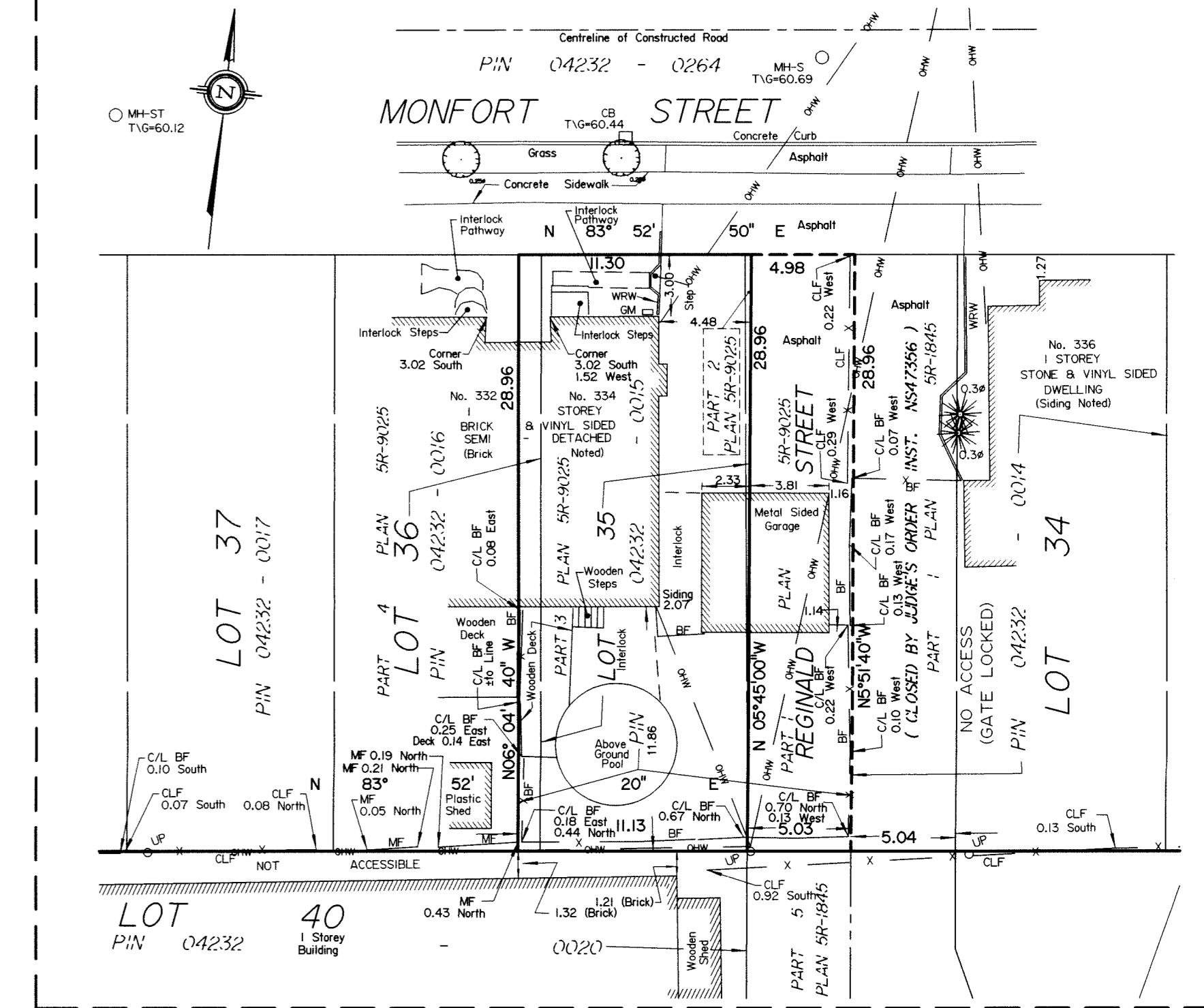


DETAIL SCALE 1:250



TOPOGRAPHICAL PLAN OF
LOTS 25 TO 31, 35, 40 TO 46
PART OF LOTS 36, 47, 48, 53
AND PART OF REGINALD STREET
(Closed by Judge's Order Inst. NS47356)
REGISTERED PLAN 246
CITY OF OTTAWA

Prepared by Annis, O'Sullivan, Vollebek Ltd.
 REVISION NOTE:
 -Topographical Features on Part of Lots 53 and 54 and part of Ste. Anne Street added February 8, 2017.
 -6 significant trees added May 5, 2017.



Metric
 DISTANCES SHOWN ON THIS PLAN ARE IN METRES AND CAN BE CONVERTED TO FEET BY DIVIDING BY 0.3048

Date: Nov 30 2016
 E.H. Herweyer O.L.S.

Notes & Legend

- | | |
|---------|---------------------------------------|
| ○ FH | Fire Hydrant |
| ○ WV | Water Valve |
| ○ VC | Valve Chamber (Watermain) |
| ○ MH-ST | Maintenance Hole (Storm Sewer) |
| ○ MH-S | Maintenance Hole (Sanitary) |
| ○ MH-W | Maintenance Hole (Hydro) |
| ○ SV | Gas Valve |
| — ST | Underground Storm Sewer |
| — S | Underground Sanitary Sewer |
| — W | Underground Water |
| — P | Underground Power |
| — G | Underground Gas |
| — B | Underground Bell |
| □ CB | Catch Basin |
| CLF | Chain Link Fence |
| BF | Board Fence |
| MF | Metal Fence |
| ○ TW | Traffic Signal Post |
| ○ MW | Monitoring Well |
| ○ UP | Utility Pole |
| ○ W-P | Wood Pole |
| ○ TG | Top of Gate |
| Invt. | Invert |
| CRW | Concrete Retaining Wall |
| CBRW | Concrete Block Retaining Wall |
| Ø | Diameter |
| +5.00 | Location of Elevations |
| +6.00 | Top of Wall / Concrete Curb Elevation |
| — | Property Line |
| ○ | Deciduous Tree |
| ○ LS | Light Standard |
| WRW | Wooden Retaining Wall |
| ○ GM | Gas Meter |
| ○ | Coniferous Tree |
| ○ AN | Anchor |

Bearings are grid and are referred to the Central Meridian of MTM Zone 9 (78°30' West Longitude) NAD-83 (original).

LOTS 25 TO 31, 40 TO 46
 PART OF LOTS 47 AND 48, PART OF REGINALD STREET
 SITE AREA=6378 m²

LOT 35, PART OF LOT 36 AND PART OF REGINALD STREET BEING PARTS 2 AND 3 PLAN 5R-9025
 SITE AREA=324.7 m²

PART OF REGINALD STREET BEING PART 1 PLAN 5R-9025
 SITE AREA=144.5 m²

PART OF LOT 53
 SITE AREA=378.8 m²

ELEVATION NOTES
 1. Elevations shown are geoidic and are referred to the CGVD25 geoidic datum.
 2. It is the responsibility of the user of this information to verify that the job benchmark has not been altered or disturbed and that its relative elevation and description agrees with the information shown on this drawing.

UTILITY NOTES
 1. This drawing cannot be accepted as acknowledging all of the utilities and it will be the responsibility of the user to contact the respective utility authorities for confirmation.
 2. Only visible surface utilities were located.
 3. A field location of underground utility is mandatory before any work involving breaking ground, probing, excavating etc.
 4. Maintenance holes marked by 'U' Underground services and Inverts are taken from City of Ottawa Engineering Drawings D-17-06 and S-046.

Topographic data on part of lots 53 and 54 and on part of Ste. Anne Street was collected under Winter Conditions. Snow cover and ice preclude determining location and elevation of some topographical data that is otherwise visible.