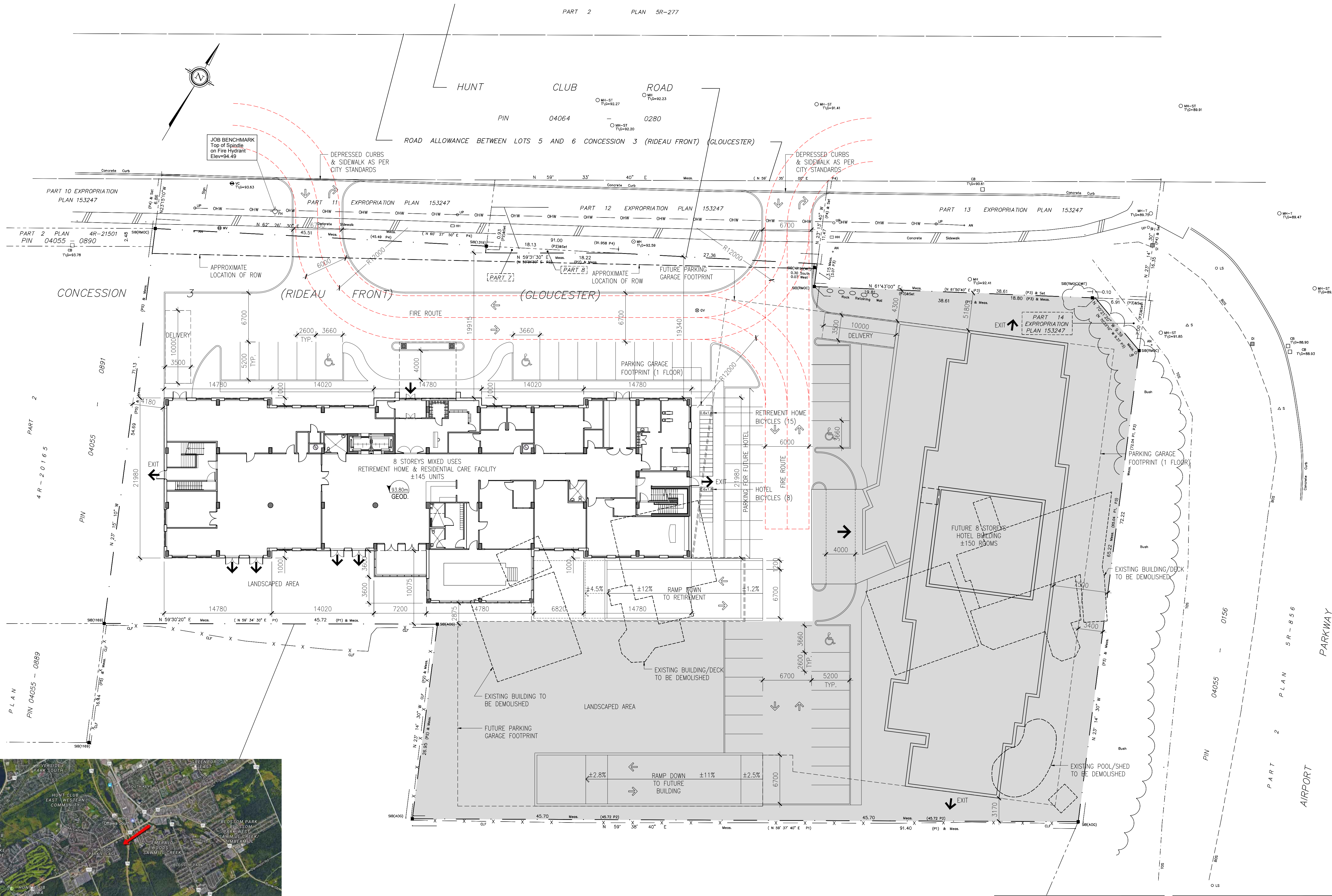
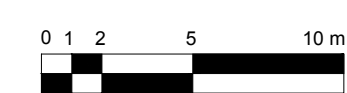


I:\P_1140011469\CAD\11469_A101_Site Plan A Ground Floor Level.dwg



AREA OF SITE:	44847 sq.m.*
GROSS FLOOR AREA PROPOSED:	*To be confirmed by surveyor
GROUND FLOOR / G.F.A.:	27271 sq.m.
ASSISTED LIVING G.F.A. (2nd - 3rd FL):	40 sq.m.
DWELLING UNITS G.F.A. (4th - 8th FL):	16103 sq.m.
PRIVATE AMENITY AREA (G.F.A.):	25952 sq.m.
COMMUNAL AMENITY AREA (G.F.A.):	161 sq.m.
MED. HEALTH OR PERS. SERV. (G.F.A.):	1090 sq.m.
SITE COVERAGE:	34%
GROUND PARKING AREA:	30%
LANDSCAPED AREA (EXCL. PARKING):	36%
PARKING STALLS:	22 INTERIOR 18 EXTERIOR 21 INTERIOR
PROVIDED BICYCLE STALLS:	15 EXTERIOR 8 FLOORS + MECH. 145
NUMBER OF FLOORS & BUILDING HEIGHT:	± 26,000 m 145
DWELLING UNITS:	

- FOR EXISTING SITE CONDITIONS, SEE SURVEY PLAN BY ANNIS O'SULLIVAN VOLLEBEK LTD. SUBMITTED SEPARATELY.
- FOR NEW GRADES AND SITE SERVICES, SEE CIVIL ENGINEERING PLAN BY NOVATECH ENG. CONSULTANTS LTD., SUBMITTED SEPARATELY.
- FOR PROPOSED VEGETATION AND LANDSCAPE INFORMATION, SEE LANDSCAPE ARCHITECTURE PLAN BY JAMES B. LENNOX & ASSOCIATES SUBMITTED SEPARATELY.



NOTES GÉNÉRALES / General Notes

- Ces documents d'architecture sont la propriété exclusive de NEUF architect(e)s et ne doivent être utilisés, reproduits ou copiés sans autorisation écrite au préalable. / These architectural documents are the exclusive property of NEUF architect(e)s and cannot be used, copied or reproduced without written pre-authorization.
- Les dimensions apparaissant aux documents doivent être vérifiées par l'entrepreneur avant le début des travaux. / All dimensions which appear on the documents must be verified by the contractor before starting the work.
- Veuillez aviser l'architecte de toute dimension erronée et/ou divergences entre ses documents et ceux des autres professionnels. / The architect must be notified of all errors, omissions and discrepancies between these documents and those of other professionals.
- Les dimensions sur ces documents doivent être lues et non mesurées. / The dimensions on these documents must be read and not measured.

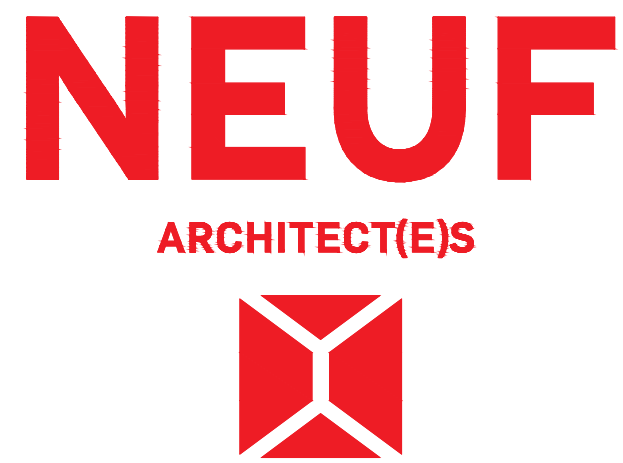
ARCHITECTURE DE PAYSAGE / Landscape architect
James B. Lennox & Associates
 361, Hinton Avenue South, Ottawa ON K1Y 1A6
 T 613 722 5188 jbla.ca

ARPENTEUR / Surveyor
Annis O'Sullivan Vollebek Ltd.
 14, Concourse Gare, Suite 200, Nepean ON K2E 7S6
 T 613 227 0850 nepean@sovild.com

GÉOTECHNIQUE / Geotechnical
Golder Associates
 1931, Robertson Road, Ottawa ON K2H 5B7
 T 613 592 9600 golder.ca

CIVIL / Civil
Novatech Eng. Consultants Ltd.
 240, Michael Cowpland Drive, Suite 200, Ottawa ON K2M 1P6
 T 613 234 9643 novatech-eng.com

ARCHITECTES / Architect
NEUF architect(e)s SENIOR
 630, Avenue Lévesque O., Côte Saint-Jacques, Montréal QC H3B 1S6
 T 514 847 1117 NEUFarchitectes.com



Ouvrage / Project
Hunt Club Development

EMPLACEMENT / Location: Ottawa, ON
 NO PROJET NO: 11459

NO	REVISION	DATE (aa.mm.jj)
A	COORDINATION	2017.02.20
B	COORDINATION	2017.03.28
1	SITE PLAN APPLICATION	2017.05.18

DESIGN PAR / Drawn by: PV
 DATE (aa.mm.jj): 17.01.16
 TITRE DU DESSIN / Drawing Title: Site Plan at Ground Floor Level

VERIFIE PAR / Checked by: LH
 ECHELLE / Scale: 1:250

REVISION / NO. DESSIN / Dwg Number: B A101