

LOTS 9, 10, 11, 12
 (South Laurier Avenue)
 PART OF LOTS 3 AND 4
 (West Blackburn Avenue)
 REGISTERED PLAN 37220
 CITY OF OTTAWA

Surveyed by Annis, O'Sullivan, Vollebek Ltd.

Scale 1 : 200
 0 2.0 4.0 6.0 8.0 Metres

Metric
 DISTANCES SHOWN ON THIS PLAN ARE IN METRES AND
 CAN BE CONVERTED TO FEET BY DIVIDING BY 0.3048

Surveyor's Certificate
 I CERTIFY THAT:
 1. This survey and plan are correct and in accordance with the Surveys Act, the Surveyors Act and the Land Titles Act and the regulations made under them.
 2. The survey was completed on the 23rd day of August, 2016.

August 25, 2016
 Date
 Andrew J. Broxham
 Ontario Land Surveyor

Notes & Legend

Denotes	
—□—	Survey Monument Planted
—■—	Survey Monument Found
—SB—	Standard Iron Bar
—SSIB—	Short Standard Iron Bar
—IB—	Iron Bar
—CP—	Concrete Pin
—(WIT)—	Witness
—Meas.—	Measured
—(AOG)—	Annis, O'Sullivan, Vollebek Ltd.
—(PI)—	(AOG) Plan June 6, 1989
○ FH	Fire Hydrant
○ MH-ST	Maintenance Hole (Storm Sewer)
○ MH-S	Maintenance Hole (Sanitary)
○ MH-B	Maintenance Hole (Bell Telephone)
○ MH-T	Maintenance Hole (Traffic)
○ MH	Maintenance Hole (Unidentified)
○ VC	Valve Chamber (Watermain)
□ HH	Handhole
○ TSP	Traffic Signal Post
○ GV	Gas Valve
—OHW—	Overhead Wires
□ CB	Catch Basin
△ S	Sign
○ UP	Utility Pole
○ AN	Anchor
○ LS	Light Standard
—CLF—	Chain Link Fence
—MF—	Metal Fence
—SRW—	Stone Retaining Wall
∅	Diameter
+ 65.00	Location of Elevations
+ 65.00	Top of Concrete Curb Elevation
—C/L—	Centreline
—	Property Line
○	Deciduous Tree
★	Coniferous Tree
□ GM	Gas Meter
⊗ WV	Water Valve
T/G	Top of Grate

ELEVATION NOTES
 1. Elevations shown are geodetic and are referred to the CGVD28 geodetic datum.
 2. It is the responsibility of the user of this information to verify that the job benchmark has not been altered or disturbed and that its relative elevation and description agrees with the information shown on this drawing.

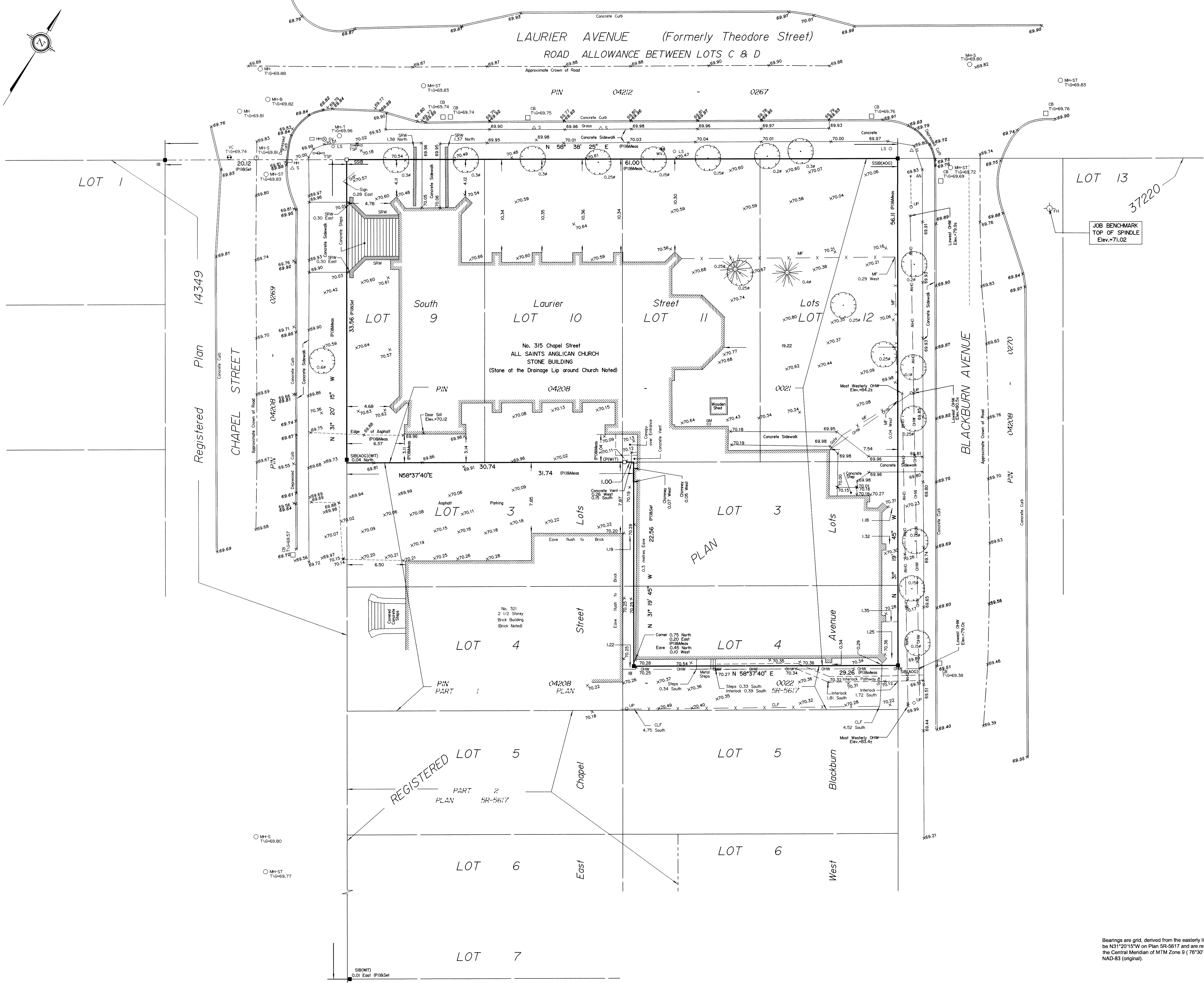
UTILITY NOTES
 1. This drawing cannot be accepted as acknowledging all of the utilities and it will be the responsibility of the user to contact the respective utility authorities for confirmation.
 2. Only visible surface utilities were located.
 3. A field location of underground plant by the pertinent utility authority is mandatory before any work involving breaking ground, probing, excavating etc.

ASSOCIATION OF ONTARIO
 LAND SURVEYORS
 PLAN SUBMISSION FORM
 1982302

THIS PLAN IS NOT VALID UNLESS
 IT IS AN EMBOSSED ORIGINAL
 COPY ISSUED BY THE SURVEYOR
 in accordance with
 Regulation 1006, Section 29 (3).

Bearings are grid, derived from the easterly limit of Chapel Street, shown to be N31°20'15"W on Plan 5R-5617 and are referred to the Central Meridian of MTM Zone 9 (76°30' West Longitude) NAD-83 (original).

© Annis, O'Sullivan, Vollebek Ltd. 2016. THIS PLAN IS PROTECTED BY COPYRIGHT
ANNIS, O'SULLIVAN, VOLLEBEK LTD.
 14 Concourse Gate, Suite 500
 Nepean, Ont. K2E 7S8
 Phone: (613) 727-0350 / Fax: (613) 727-1079
 Email: nepean@asvl.com
 (Job No. 17044-16 AllSaintsChurch.L1 3 Pl. 37220 T.D.)



CARLETON CONDOMINIUM PLAN No. 60