

**SURVEYOR'S REAL PROPERTY REPORT**  
**PART 1** Plan of  
**PART OF LOTS 22, 23, 24**  
**(East Bell Street)**  
**REGISTERED PLAN 33**  
**CITY OF OTTAWA**

Surveyed by Annis, O'Sullivan, Vollebek Ltd.

Scale 1:150

Metric  
 DISTANCES SHOWN ON THIS PLAN ARE IN METRES AND CAN BE CONVERTED TO FEET BY DIVIDING BY 0.3048

**Surveyor's Certificate**

I CERTIFY THAT:  
 1. This survey and plan are correct and in accordance with the Surveys Act and the Regulations made under them.  
 2. The survey was completed on the \_\_\_ day of \_\_\_\_\_, 2021.

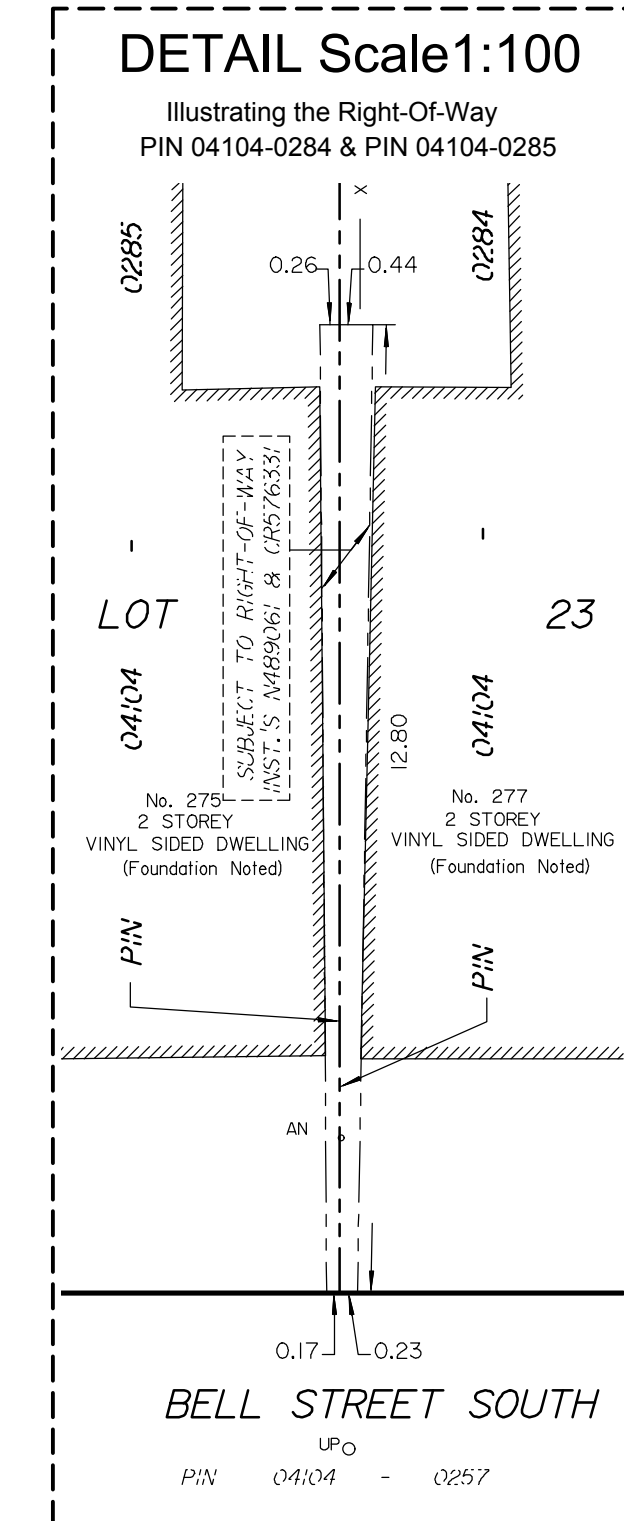
Date \_\_\_\_\_  
 Andrew J. Broxham  
 Ontario Land Surveyor

**PART 2**  
 THIS PLAN MUST BE READ IN CONJUNCTION WITH SURVEY REPORT DATED \_\_\_\_\_ SEPTEMBER 2021 \_\_\_\_\_

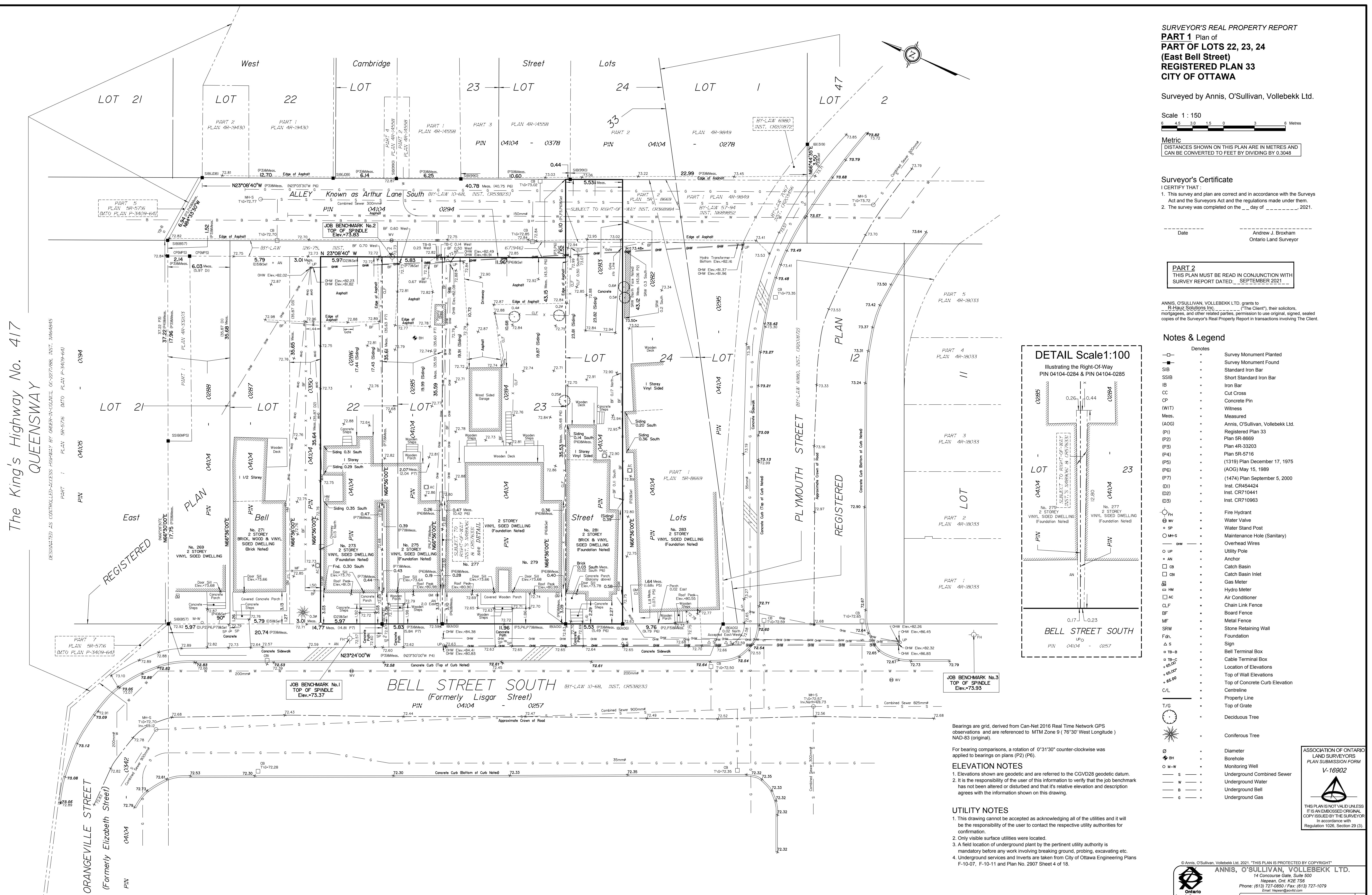
ANNIS, O'SULLIVAN, VOLLEBEK LTD. grants to R-Huz Solutions Inc. ("The Client"), their solicitors, mortgagees, and other related parties, permission to use original, signed, sealed copies of the Surveyor's Real Property Report in transactions involving The Client.

**Notes & Legend**

- |        |         |                                  |
|--------|---------|----------------------------------|
| —○—    | Denotes | Survey Monument Planted          |
| —■—    |         | Survey Monument Found            |
| —SIB   |         | Standard Iron Bar                |
| —SSIB  |         | Short Standard Iron Bar          |
| —IB    |         | Iron Bar                         |
| —CC    |         | Cut Cross                        |
| —CP    |         | Concrete Pin                     |
| —(WIT) |         | Witness                          |
| —Meas. |         | Measured                         |
| —(AOG) |         | Annis, O'Sullivan, Vollebek Ltd. |
| —(P1)  |         | Registered Plan 33               |
| —(P2)  |         | Plan SR-8669                     |
| —(P3)  |         | Plan SR-33203                    |
| —(P4)  |         | Plan SR-5716                     |
| —(P5)  |         | (1319) Plan December 17, 1975    |
| —(P6)  |         | (ADG) May 15, 1989               |
| —(P7)  |         | (1474) Plan September 5, 2000    |
| —(D1)  |         | Inst. CR454424                   |
| —(D2)  |         | Inst. CR710441                   |
| —(D3)  |         | Inst. CR710963                   |
| —FH    |         | Fire Hydrant                     |
| —WV    |         | Water Valve                      |
| —SP    |         | Water Stand Post                 |
| —MH-S  |         | Maintenance Hole (Sanitary)      |
| —OW    |         | Overhead Wires                   |
| —UP    |         | Utility Pole                     |
| —AN    |         | Anchor                           |
| —CB    |         | Catch Basin                      |
| —CBI   |         | Catch Basin Inlet                |
| —GM    |         | Gas Meter                        |
| —HM    |         | Hydro Meter                      |
| —AC    |         | Air Conditioner                  |
| —CLF   |         | Chain Link Fence                 |
| —BF    |         | Board Fence                      |
| —MF    |         | Metal Fence                      |
| —SRW   |         | Stone Retaining Wall             |
| —Fdn.  |         | Foundation                       |
| —S     |         | Sign                             |
| —TB-B  |         | Bell Terminal Box                |
| —TB-C  |         | Cable Terminal Box               |
| —60.00 |         | Location of Elevations           |
| —65.00 |         | Top of Wall Elevations           |
| —65.00 |         | Top of Concrete Curb Elevation   |
| —C/L   |         | Centreline                       |
| —P.L.  |         | Property Line                    |
| —T/G   |         | Top of Grate                     |
| —      |         | Deciduous Tree                   |
| —      |         | Coniferous Tree                  |
| —      |         | Diameter                         |
| —      |         | Borehole                         |
| —      |         | Monitoring Well                  |
| —      |         | Underground Combined Sewer       |
| —      |         | Underground Water                |
| —      |         | Underground Bell                 |
| —      |         | Underground Gas                  |



The King's Highway No. 417  
 QUEENSWAY



Bearings are grid, derived from Can-Net 2016 Real Time Network GPS observations and are referenced to MTM Zone 9 (76°30' West Longitude) NAD-83 (original).

For bearing comparisons, a rotation of 0°31'30" counter-clockwise was applied to bearings on plans (P2) (P6).

**ELEVATION NOTES**

1. Elevations shown are geodetic and are referred to the CGVD28 geodetic datum.  
 2. It is the responsibility of the user of this information to verify that the job benchmark has not been altered or disturbed and that its relative elevation and description agrees with the information shown on this drawing.

**UTILITY NOTES**

1. This drawing cannot be accepted as acknowledging all of the utilities and it will be the responsibility of the user to contact the respective utility authorities for confirmation.  
 2. Only visible surface utilities were located.  
 3. A field location of underground plant by the pertinent utility authority is mandatory before any work involving breaking ground, probing, excavating etc.  
 4. Underground services and Inverts are taken from City of Ottawa Engineering Plans F-10-07, F-10-11 and Plan No. 2907 Sheet 4 of 18.

ASSOCIATION OF ONTARIO  
 LAND SURVEYORS  
 PLAN SUBMISSION FORM  
**V-16902**  
  
 THIS PLAN IS NOT VALID UNLESS IT IS AN EMBOSSED ORIGINAL COPY ISSUED BY THE SURVEYOR. In accordance with Regulation 1026, Section 29 (3).

ANNIS, O'SULLIVAN, VOLLEBEK LTD.  
 14 Concourse Gate, Suite 500  
 Nepean, Ont. K2E 7S6  
 Phone: (613) 727-0850 / Fax: (613) 727-1079  
 Email: hopen@annisvollebek.com  
 Job No. 21793-21, 2-Storey, Pk1-29, Pk 33, T. 02