

METRIC DISTANCES AND ELEVATIONS SHOWN ON THIS PLAN ARE IN METRES AND CAN BE CONVERTED TO FEET BY DIVIDING BY 0.3048

**TOPOGRAPHIC SURVEY OF  
LOTS 50, 51 & PART OF LOT 52  
(North of Gloucester Street)  
REGISTERED PLAN 4556  
CITY OF OTTAWA**

FAIRHALL, MORFATT & WOODLAND LIMITED  
ONTARIO LAND SURVEYORS

SCALE 1 : 200

**ELEVATION NOTES**

- ELEVATIONS SHOWN HEREON ARE REFERRED TO GEODETIC DATUM.
- ELEVATIONS FOR MANHOLE COVERS AND CATCH BASINS HAVE TO BE INDEPENDENTLY CONFIRMED BEFORE THEY CAN BE ACCEPTED FOR FINAL DESIGN OR CONSTRUCTION PURPOSES.
- IT IS THE RESPONSIBILITY OF THE USER OF THIS INFORMATION TO VERIFY THAT THE JOB BENCHMARKS HAVE NOT BEEN ALTERED OR DISTURBED AND THAT THEIR RELATIVE ELEVATION AND DESCRIPTION AGREE WITH THE INFORMATION SHOWN ON THIS DRAWING.
- INVERT ELEVATIONS FOR STORM & SANITARY SEWERS PER CITY OF OTTAWA PUBLIC UTILITIES REGISTRY RECORDS.

**UTILITY NOTES**

- THIS DRAWING CANNOT BE ACCEPTED AS ACKNOWLEDGING ALL OF THE UNDERGROUND UTILITIES AND IT WILL BE THE RESPONSIBILITY OF THE USER TO CONTACT THE RESPECTIVE UTILITY AUTHORITIES FOR CONFIRMATION OR LOCATION.
- UNDERGROUND UTILITIES, AS REPORTED ON THIS DRAWING, ARE NOT BASED ON AN ACTUAL 'FIELD LOCATE' BY THE RESPECTIVE UTILITY AGENCIES BUT HAVE BEEN COMPILED FROM DATA OBTAINED FROM THE FOLLOWING SOURCE:  
a) CITY OF OTTAWA PUBLIC UTILITIES REGISTRY
- BEFORE ANY WORK INVOLVING PROBING, EXCAVATING, ETC., A FIELD LOCATION OF UNDERGROUND PLANT BY THE PERTINENT UTILITY AUTHORITY IS MANDATORY.
- BEARINGS ARE GRID, DERIVED FROM (857) PROJECT CONTROL MONUMENTS 6 (E 367686.784, N 503137.685) AND 8 (E 367791.213, N 503144.424) (JOB S44300 REF: 149-2996) AND ARE REFERRED TO THE CENTRAL MERIDIAN, 76°30'W LONGITUDE MTM ZONE 9, NAD83 ORIGINAL.
- DISTANCES ARE GROUND AND CAN BE CONVERTED TO GRID BY MULTIPLYING BY THE COMBINED SCALE FACTOR 0.999943.

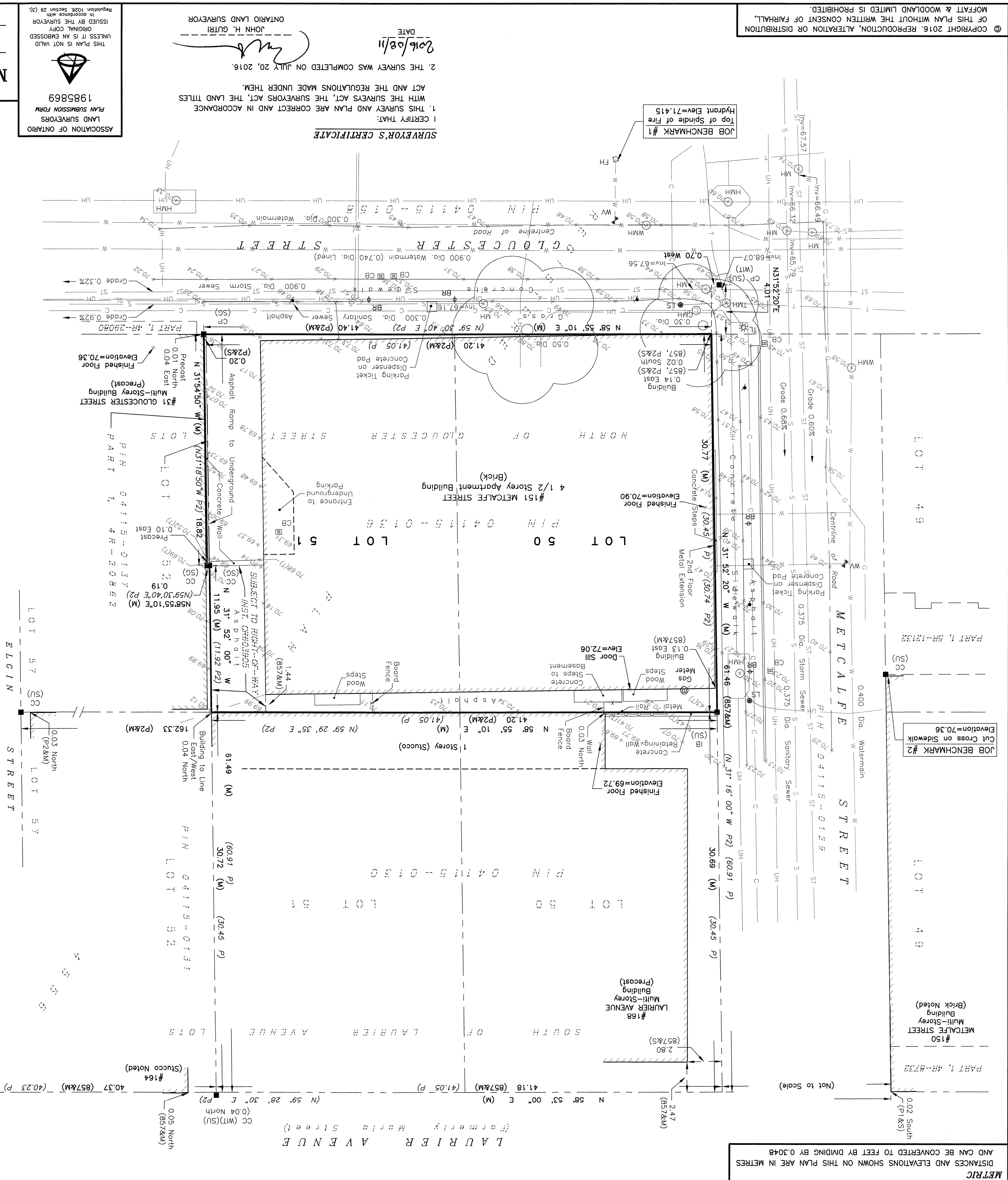
**NOTES**

- BEARINGS ARE GRID, DERIVED FROM (857) PROJECT CONTROL MONUMENTS 6 (E 367686.784, N 503137.685) AND 8 (E 367791.213, N 503144.424) (JOB S44300 REF: 149-2996) AND ARE REFERRED TO THE CENTRAL MERIDIAN, 76°30'W LONGITUDE MTM ZONE 9, NAD83 ORIGINAL.
- DISTANCES ARE GROUND AND CAN BE CONVERTED TO GRID BY MULTIPLYING BY THE COMBINED SCALE FACTOR 0.999943.

**LEGEND**

- TMH - TRAFFIC MANHOLE
- WMH - WATER MANHOLE
- CMH - MANHOLE (TELUS)
- MH - MANHOLE
- IB - IRON BAR
- CC - CUT CROSS
- CP - CONCRETE PIN
- (P) - REGISTERED PLAN 4556
- (P1) - PLAN 4R-8732
- (P2) - PLAN 4R-20862
- (M) - MEASURED
- (S) - SET
- (S7) - SIGN
- (857) - FAIRHALL, MORFATT & WOODLAND LIMITED, O.L.S. (REF. 24-4556 & 35-4556)
- (SU) - STANTEC GEOMATICS LTD., O.L.S.
- (SU) - SOURCE UNKNOWN
- (UB) - UNDERGROUND HYDRO
- (UB) - UNDERGROUND BELL
- (G) - GAS MAIN
- (ST) - STORM SEWER
- (T) - TOP OF WALL
- (SAN) - SANITARY
- (CB) - CATCH BASIN
- MH - MANHOLE
- SL - STREET LIGHT
- CURB

JOB No. W 2 8 7 0 0  
REFERENCE No. E 367848, N 5031423  
54 - 4556  
TP287M.DWG (nj)  
S:\085\W28700\085 2016-08-10



ASSOCIATION OF ONTARIO LAND SURVEYORS  
1985869

**SURVEYOR'S CERTIFICATE**

I CERTIFY THAT:  
1. THIS SURVEY AND PLAN ARE CORRECT AND IN ACCORDANCE WITH THE SURVEYORS ACT, THE LAND TITLES ACT AND THE REGULATIONS MADE UNDER THEM.  
2. THE SURVEY WAS COMPLETED ON JULY 20, 2016.

DATE: 2016/08/11  
JOHN H. GUTRI  
ONTARIO LAND SURVEYOR

© COPYRIGHT 2016. REPRODUCTION, ALTERATION OR DISTRIBUTION OF THIS PLAN WITHOUT THE WRITTEN CONSENT OF FAIRHALL, MORFATT & WOODLAND LIMITED IS PROHIBITED.