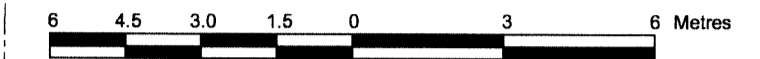


**TOPOGRAPHICAL PLAN OF  
LOTS 9, 10 AND 11  
( East Parkdale Avenue )  
REGISTERED PLAN 35  
CITY OF OTTAWA**

Prepared by Annis, O'Sullivan, Vollebakk Ltd.  
Field Work Completed August 2, 2011

Scale 1 : 150



**Metric**

DISTANCES SHOWN ON THIS PLAN ARE IN METRES AND  
CAN BE CONVERTED TO FEET BY DIVIDING BY 0.3048

**Notes & Legend**

- |                          |         |                                 |
|--------------------------|---------|---------------------------------|
| ○ MH                     | Denotes | Maintenance Hole (Unidentified) |
| OHW                      | "       | Overhead Utility Wires          |
| ○ LS                     | "       | Light Standard                  |
| ○ UP                     | "       | Utility Pole                    |
| ○ AN                     | "       | Anchor                          |
| □ CB                     | "       | Catch Basin                     |
| ○ FH                     | "       | Fire Hydrant                    |
| ⊗ WV                     | "       | Water Valve                     |
| ⊗ GV                     | "       | Gas Valve                       |
| ⊗ GM                     | "       | Gas Meter                       |
| □ TB-T                   | "       | Traffic Terminal Box            |
| ⊗ TSP                    | "       | Traffic Signal Post             |
| ○ (with tree symbol)     | "       | Deciduous Tree                  |
| ○ (with star symbol)     | "       | Coniferous Tree                 |
| ○ (with diameter symbol) | "       | Diameter                        |
| + 65.00                  | "       | Location of Elevations          |
| ⊗ C-S                    | "       | Commercial Sign                 |
| —                        | "       | Property Line                   |

SITE AREA = 1373.6 m<sup>2</sup>

BOUNDARY INFORMATION COMPILED FROM OFFICE RECORDS  
AND A FIELD SURVEY.

Bearings are grid bearings, derived from simultaneous GPS observations  
and are referred to the Central Meridian of Zone 9 of the Ontario Coordinate  
System, Longitude 76°30' West (MTM NAD-83).

**ELEVATION NOTES**

- Elevations shown are referred to geodetic datum.
- It is the responsibility of the user of this information to verify that the job benchmark has not been altered or disturbed and that its relative elevation and description agrees with the information shown on this drawing.

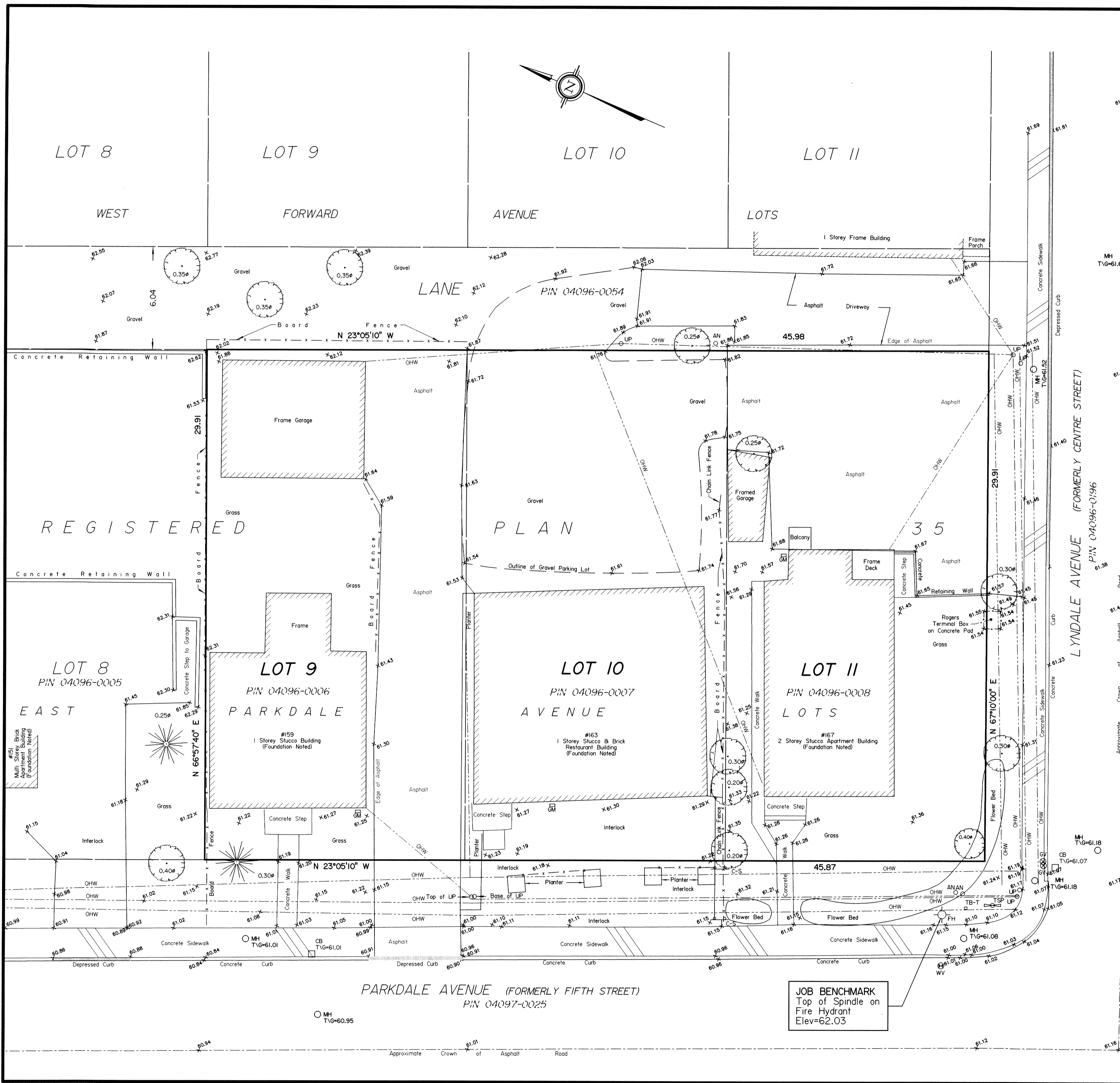
**UTILITY NOTES**

- This drawing cannot be accepted as acknowledging all of the utilities and it will be the responsibility of the user to contact the respective utility authorities for confirmation.
- Only visible surface utilities were located.
- A field location of underground plant by the pertinent utility authority is mandatory before any work involving breaking ground, probing, excavating etc.

© Annis, O'Sullivan, Vollebakk Ltd., 2011. "THIS PLAN IS PROTECTED BY COPYRIGHT"

**ANNIS, O'SULLIVAN, VOLLEBEKK LTD.**  
14 Concourse Gate, Suite 500  
Nepean, Ont. K2E 7S6  
Phone: (613) 727-0850 / Fax: (613) 727-1079  
Email: Nepean@aovltd.com

**Ontario Land Surveyors**



Y:\2011\12241-11\Drawings\12241-11\_Richcraft\_L9\_10\_11\_RP\_35\_T.DWG