

DRAFT PLAN OF COMMON ELEMENT CONDOMINIUM OF  
BLOCKS 13 & 14  
REGISTERED PLAN 4M-XXXX  
CITY OF OTTAWA  
FARLEY SMITH & DENIS SURVEYING LTD  
2014

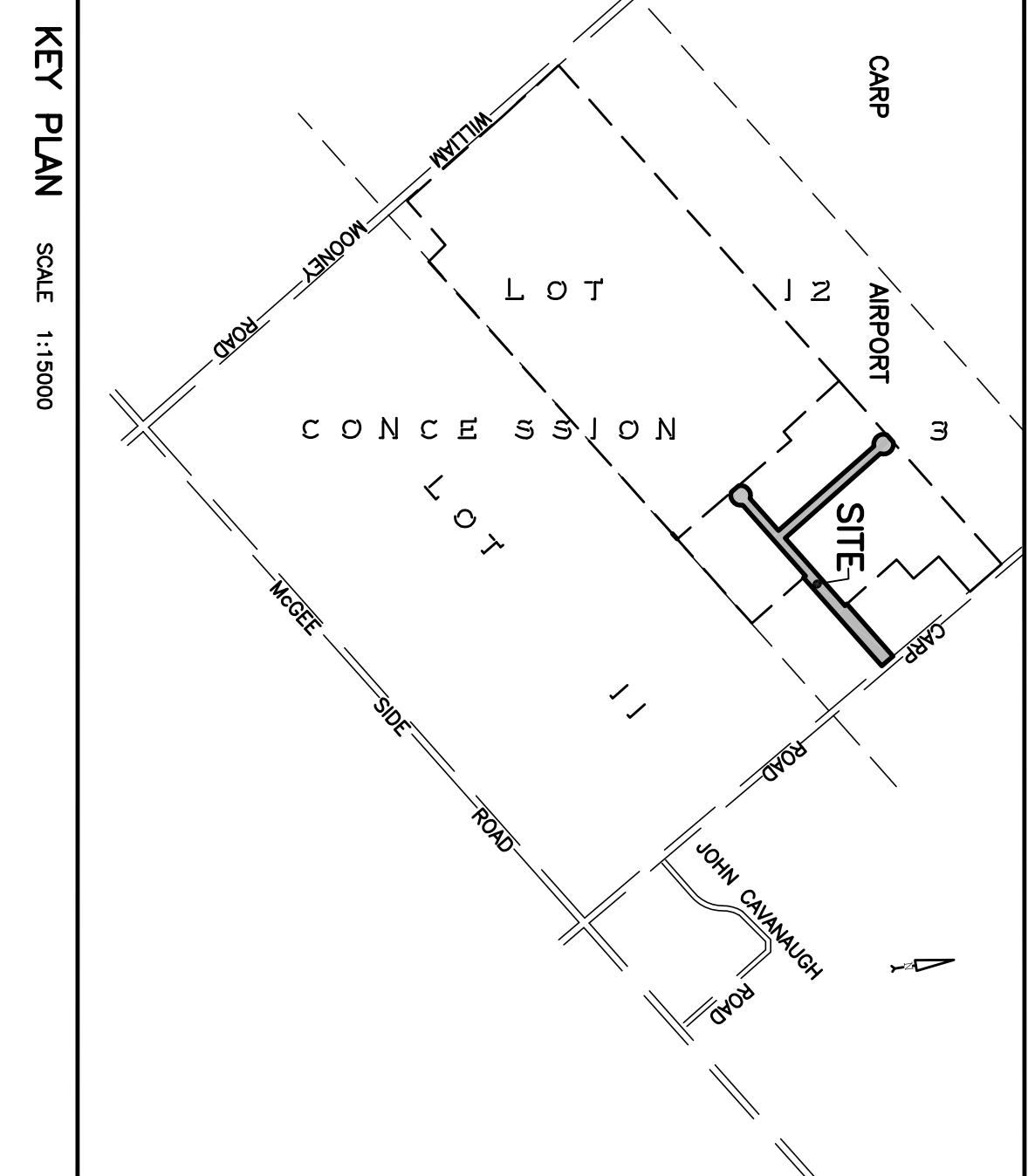
SCALE 1:2000  
0 20 40 60 80 100 120 140 160 180 200 metres

METRIC NOTE  
DISTANCES SHOWN ON THIS PLAN ARE IN METRES AND CAN  
BE CONVERTED TO FEET BY DIVIDING BY 0.3048.  
ELEVATION NOTE  
ELEVATIONS ARE GEODETIC.

ADDITIONAL INFORMATION  
(a) SEE PLAN  
(b) SEE PLAN  
(c) SEE PLAN  
(d) COMMERCIAL  
(e) SEE PLAN  
(f) SEE PLAN  
(g) SEE PLAN  
(h) DRILLED WELL  
(i) SEE PLAN  
(j) SEE PLAN  
(k) SEPTIC SYSTEM  
(l) SEE PLAN  
TOTAL AREA=1.74Ha

LEGEND  
x-x-x-x FENCE  
O/H UTILITY POLE  
O/N OVERHEAD WIRES  
C G DENOTES CENTRELINE OF ROAD  
R DENOTES ROAD WIDTH  
A DENOTES ROAD LENGTH

APPLICATION .....  
SUBJECT TO THE CONDITIONS, IF ANY, SET FORTH IN  
OUR LETTER DATED ..... 2014,  
THIS DRAFT PLAN IS APPROVED BY THE CITY OF OTTAWA,  
UNDER SECTION 51 OF THE PLANNING ACT  
THIS ..... DAY OF ..... 2014.  
DERICK MOODIE, MANAGER  
DEVELOPMENT REVIEW, RURAL SERVICES  
PLANNING AND GROWTH MANAGEMENT DEPARTMENT  
CITY OF OTTAWA

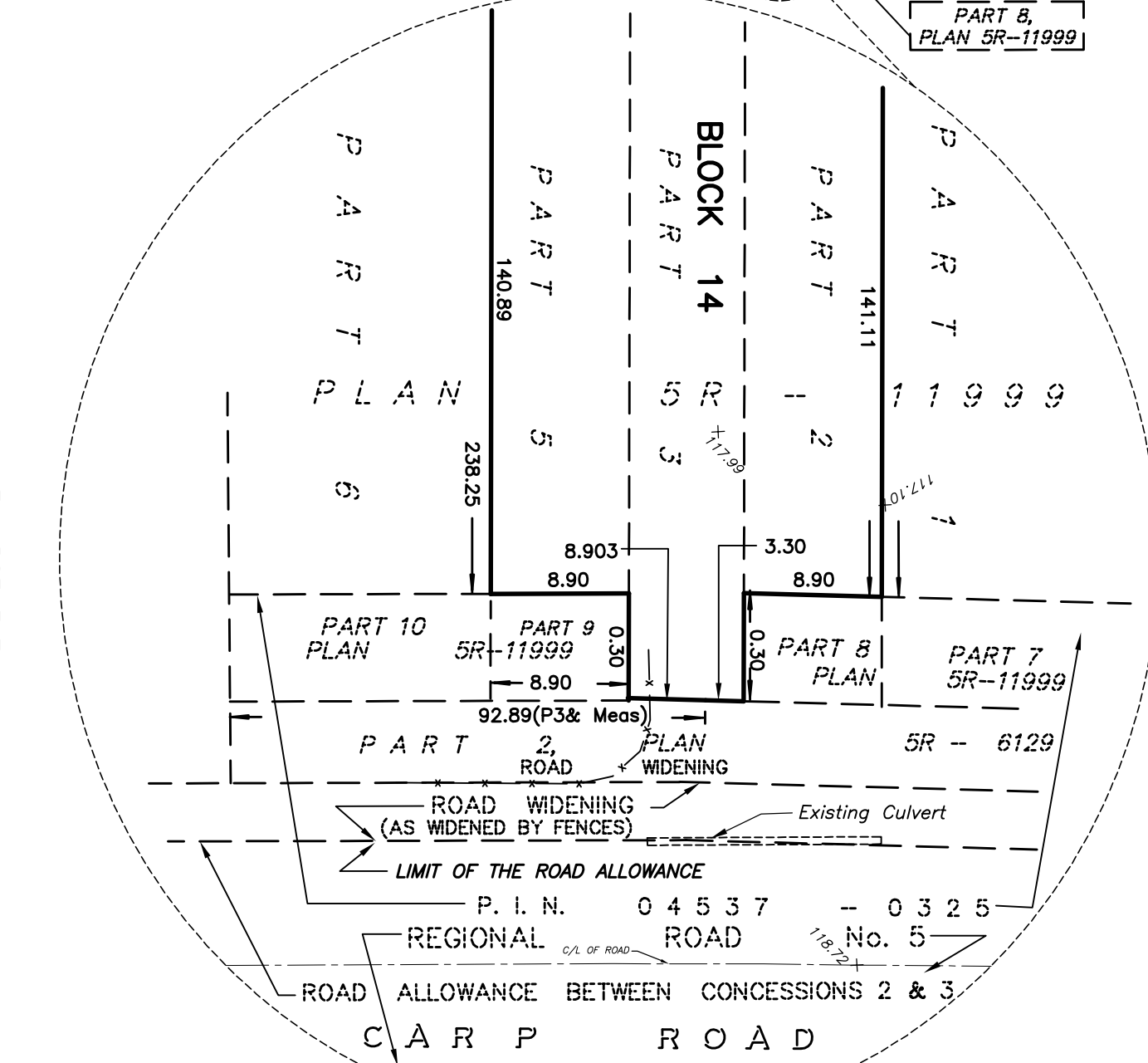
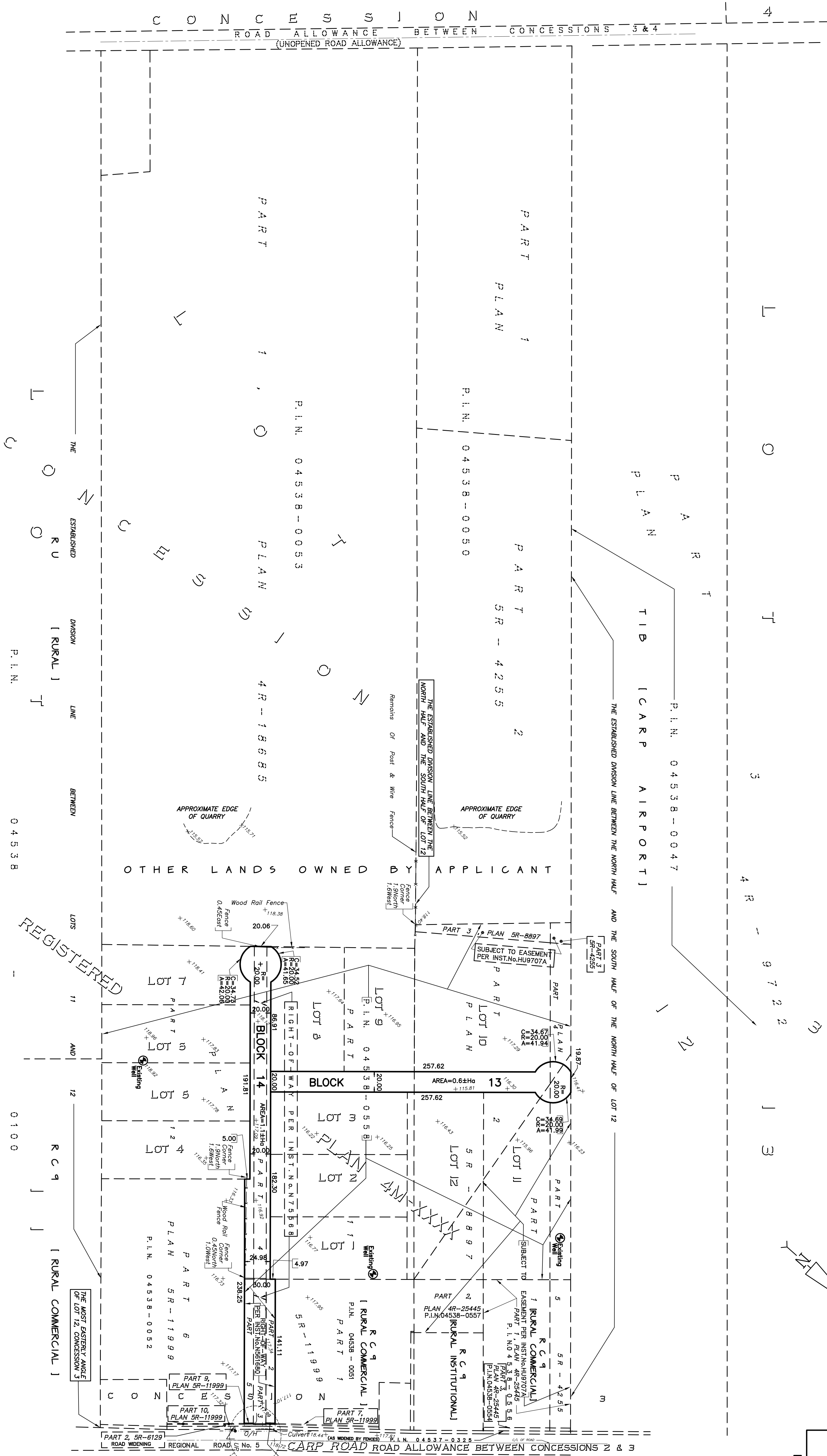


SURVEYOR'S CERTIFICATE

I HEREBY CERTIFY THAT:  
1. THE BOUNDARIES OF THE LANDS TO BE SUBDIVIDED AND THEIR RELATIONSHIP  
TO ADJOINING LANDS ARE ACCURATELY AND CORRECTLY SHOWN.  
DATE: AUGUST 18, 2014  
RONALD DENIS  
ONTARIO LAND SURVEYOR

OWNER'S CERTIFICATE

I HEREBY AUTHORIZE FARLEY SMITH & DENIS SURVEYING LTD. TO SUBMIT THIS DRAFT PLAN OF  
CONDOMINIUM ON MY BEHALF.  
DATE: AUGUST 18, 2014  
GREG LEBLANC  
SALLIE STOREY



FARLEY, SMITH & DENIS SURVEYING LTD.  
ONTARIO LAND SURVEYORS  
CANADA LANDS SURVEYORS  
190 COLONNADE ROAD, OTTAWA, ONTARIO K2Z 7J5  
TEL: (613) 727-8226 FAX: (613) 727-1823  
August-18-14 8:48:49 AM

FILE NO.: J-1122  
23-030 FILESRJPMN (2014)1122 CARP ROAD-1122-049 ROAD-1122-049 PLAN OF COMMON ELEMENT CONDOMINIUM 499